

Product Information Packet

November 9, 2016

Data shown is for the current revision model #. Ensure your nameplate model # matches.

Model Number:	5KS405LAA126A
Catalog Number:	M7654
Instruction Manual:	GEI-56128
Connection Diagram:	GEM2034E-FIG9
Outline Drawing:	239CC401AB

Accessory Connection Diagrams			
Bearing Thermocouple:	None	Heater:	None
RTD:	None	Thermistor:	None
Thermostat:	None	Winding Thermocouple:	None
Bearing RTD:	None		

Table of Contents	
Specification	01
Performance Characteristics	02
Outline Drawing	03
Connection Drawing(s)	04



Marks:

MODEL NUMBER:	5KS405LAA126A	Estimated Weight:	1430 Lbs
Outline Drawing:	239CC401AB	Time Rating:	CONT
Connection Diagram:	GEM2034E-FIG9	Enclosure:	TEFC
Instruction Book:	GEI-56128	Encl Construction:	SD
Design Code:	40BD0037A	Ambient Max(°C):	40
Type:	KS	Alt Ambient Max(°C):	--
Frame:	405TSC	Insulation Class:	F
Phases:	3	NEMA Design:	A
Poles:	2	Nominal Efficiency:	95.0 %
Output Power:	100HP 74KW	Guaranteed Efficiency:	94.1
RPM:	3570	3/4 Load Efficiency:	95.2
Voltage:	230/460	KVA Code:	H
Hertz:	60	Max KVAR:	26.5
Amps - FL:	224.0/112.0	Power Factor:	88.0
Service Factor:	1.15	Bearing - DE:	6213ZC3
Alt Service Factor:	--	Bearing - ODE:	6213ZC3

Enclosure is Totally Enclosed Fan-Cooled

Stamped Nameplate Notes:

INVERTER DUTY PER NEMA MG1 PART 31
 ALTERNATE RATING FOR PWM CONTROL:
 1.0 SF VAR TORQUE RANGE 0-60 HZ

Additional Information:

2P - TS EXTN
 C FACE ON DE
 700 CU IN - 3.00" NPT
 OIL RESISTANT SLEEVING ON LEADS
 F1 MOUNTING
 VIBRATION LIMIT 0.15 INCH PER SEC

Performance Characteristics

1st Winding 1st Connection

Design: 40BD0037A

Marks:

LOAD %	125.0	115.0	100.0	75.0	50.0	25.0	0.0
% EFF	94.82	94.99	95.38	95.23	94.63	91.68	0.00
% PF	88.96	88.65	87.8	84.67	76.8	55.6	5.05
AMPS	138.7	127.81	111.76	87.06	64.39	45.9	36.84

TORQ(FL)#FT 147.05
AMPS(LR) 831.9

TORQ(LR)%FL 162.87
PF AT START 0.23

TORQ(BD)%FL 309.31

This motor is capable of two cold or one hot start with a maximum connected load inertia of 300 Lb-Ft Sq (12.63 Kg-meter Sq)at 100% voltage, where the load torque varies with the square of the speed. Acceleration time with maximum inertia and the above load type is 19 seconds. Safe stall time at 100% voltage is 51 seconds cold, 23 seconds hot. Rotor inertia is 11.6 Lb-Ft Sq (0.49 Kg-meter Sq).

Open Circuit A-C: 0.95

Short Circuit D-C: 0.026

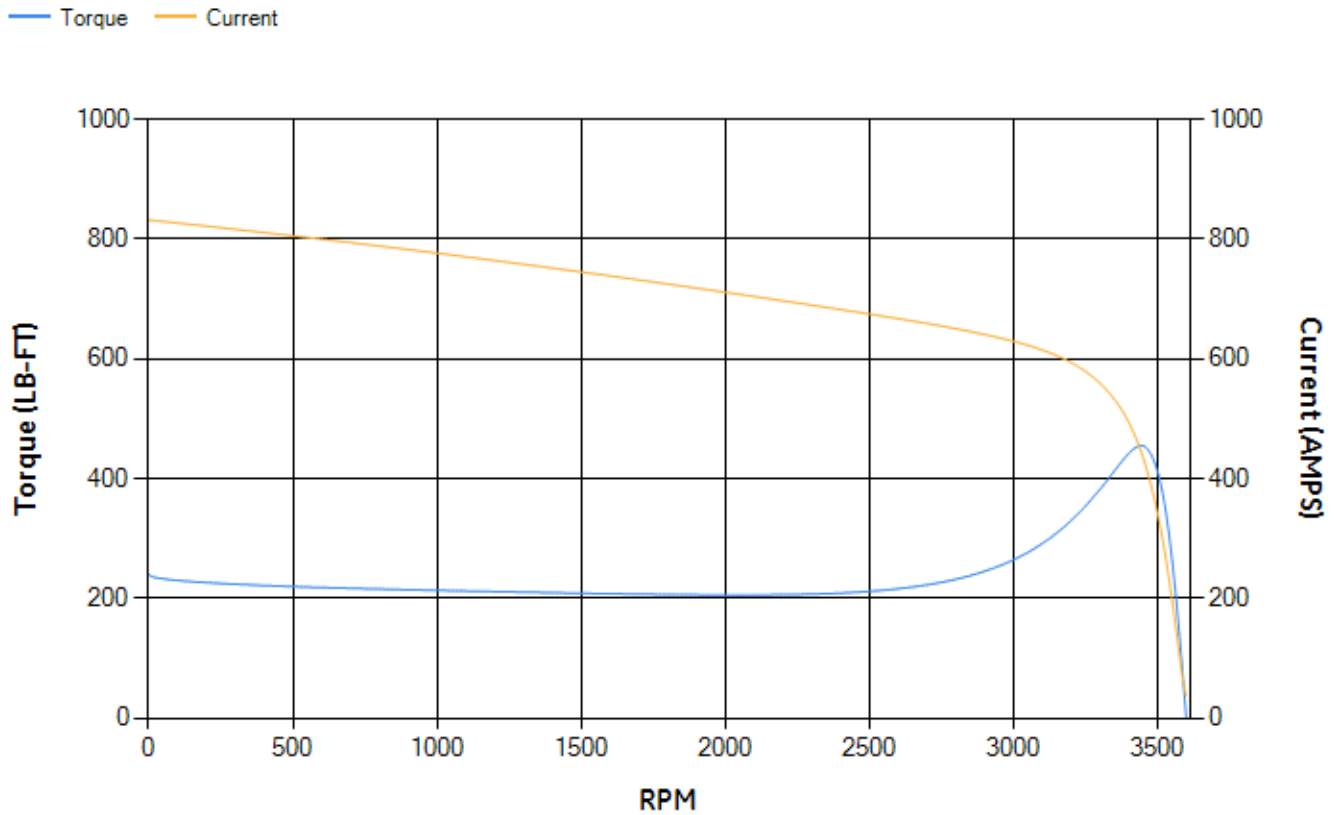
Short Circuit A-C: 0.046

X/R Ratio: 9.964

Stator Slots: 48

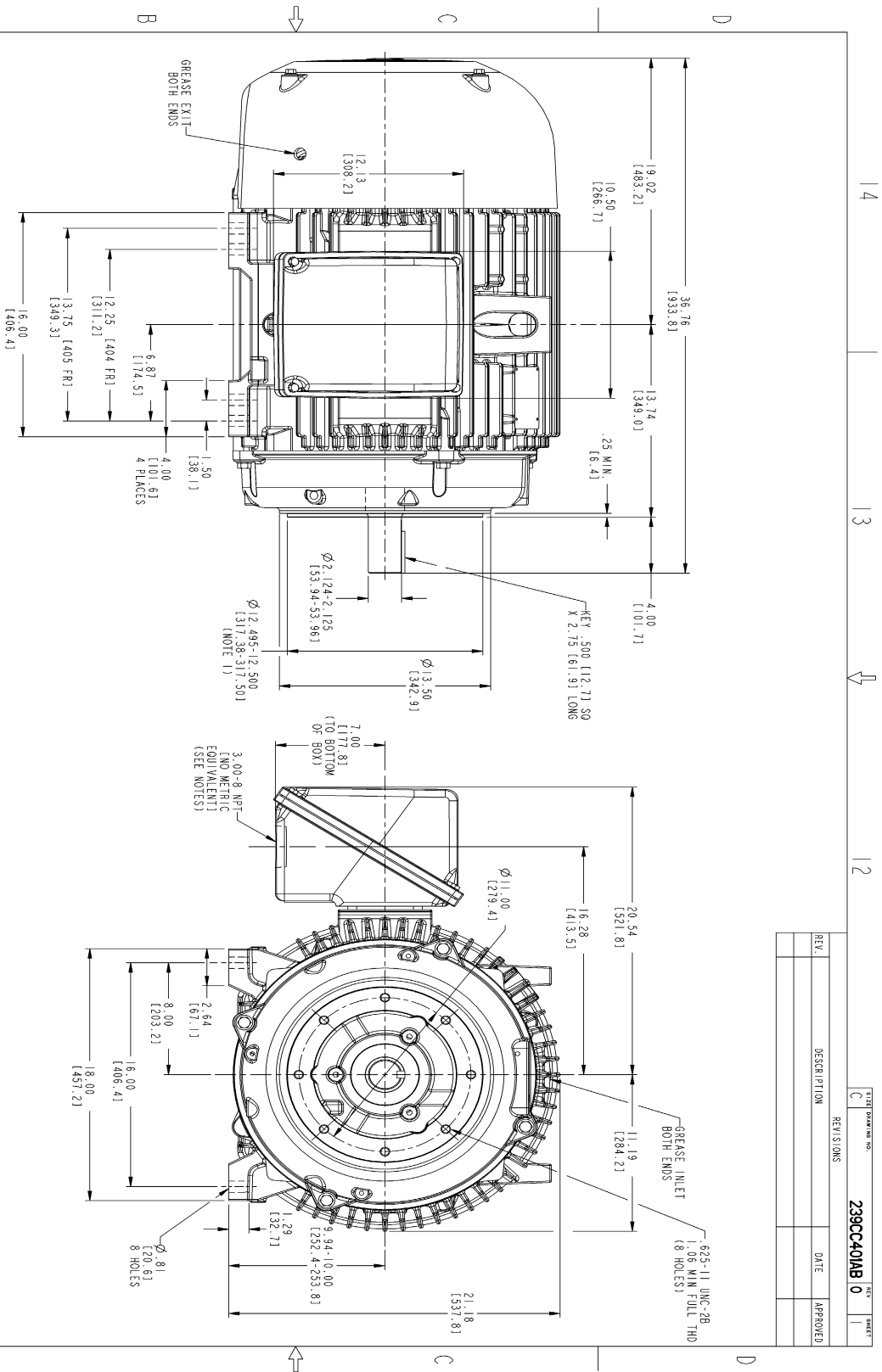
Rotor Slots: 38

Speed Torque Current Curve (First Connection, First Speed)



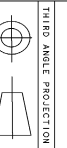
NAME:501614147 OBJECT:239CC401AB DATE:28-May-10 10:00:02

Marks:



- NOTES:
1. CONDUIT BOX MAY BE PLACED WITH THE ENTRANCE DOWN, UP OR ON EITHER SIDE.
 2. F-1 ASSEMBLY AS SHOWN.
 3. F-2 ASSEMBLY CONDUIT BOX ON OPPOSITE SIDE.
 4. BRACKETED DIMENSIONS ARE METRIC (MILLIMETERS).

REV.	DESCRIPTION	DATE	APPROVED



SIGNATURES	DATE	GENERAL ELECTRIC COMPANY
MOELLER	05/28/10	<p>OUTLINE 404/405 TSC TEFC ESP 700 CU IN CONDUIT BOX</p> <p>239CC401AB</p>
FRANZ	05/28/10	
CHEN	05/28/10	
WANG	05/28/10	
ISSUED	05/28/10	<p>SCALE: 0.250</p> <p>SHEET # OF 1</p>

Marks:

Connection Diagram
GEM2034E-FIG9

