

Product Information Packet

November 7, 2016

Data shown is for the current revision model #. Ensure your nameplate model # matches.

Model Number:	5CD194SA082A418
Catalog Number:	D467
Instruction Manual:	GEH-3967N
Connection Diagram:	36A167900CA502
Outline Drawing:	36A167946AA001

Accessory Connection Diagrams

Bearing Thermocouple:	None	Heater:	None
RTD:	None	Thermistor:	None
Thermostat:	None	Winding Thermocouple:	None
Bearing RTD:	None		

Table of Contents

Specification	01
Outline Drawing	02
Connection Drawing(s)	03



imagination at work

Marks:

MODEL NUMBER: 5CD194SA082A418
Outline Drawing: 36A167946AA001
Connection Diagram: 36A167900CA502
Horsepower: 100
Armature Volts: 500
Wound: SHUNT
Enclosure: DPGF-BV
Duty: CONT
Rating Code: 194S1350-20
K(V): 2.62 Cemf volts/Radian/Sec
K(T): 1.88 Ft/Amp
Minimum Ambient: 0 C

Enclosure Mtg Assem: 36A167775AC001
Instruction Book: GEH-3967N
RPM: 1750/2000
Armature Amps: 160
Type: CD368AT
Power Supply Code: C
Insulation Class: F
Ambient Max (°C): 40 C
Field Volts: 300/150
WK2: 22.20Lb Ft²
Year of Manufacture: 2016
Max Altitude: 3300 Ft

Resistances at 25 Degrees C :

Shunt Field: 56.9 OHMS
Armature: .0654 OHMS
Commutator Field: .0221 OHMS

Inductances:

Armature Circuit Total: 2.160 mH Saturated
Shunt Field: 48.0 Henries Unsaturated

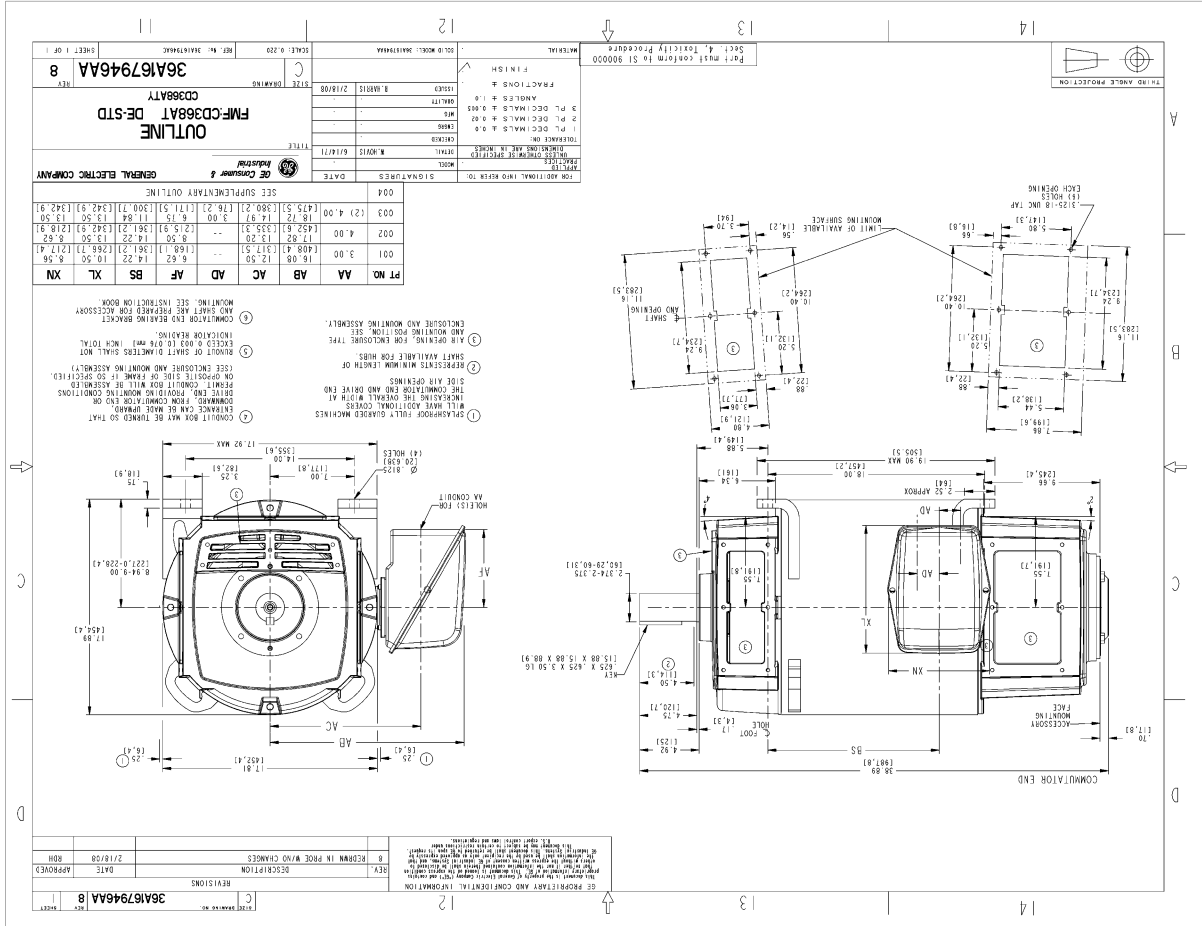
Shunt Field Data:

Shunt Field Current(1): 3.9 AMPS at Rated Load and 1750 RPM
 Shunt Field Current(2): 3.55 AMPS at Rated Load and 1833 RPM
 Shunt Field Current(3): 3 AMPS at Rated Load and 2000 RPM

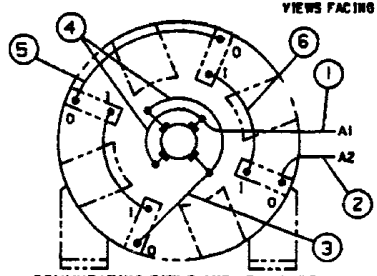
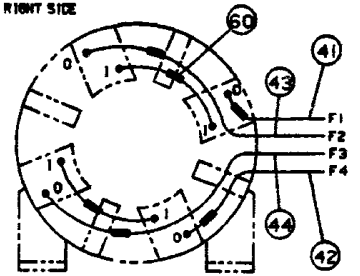
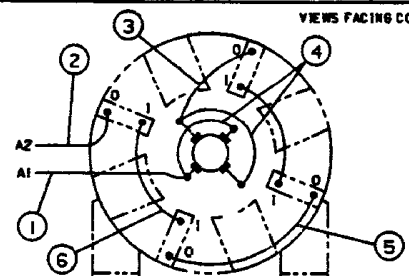
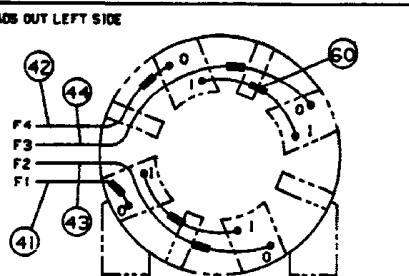
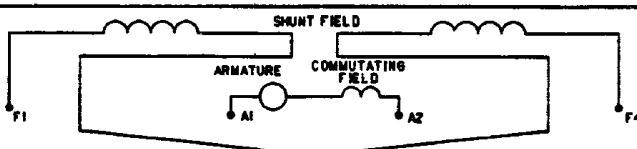
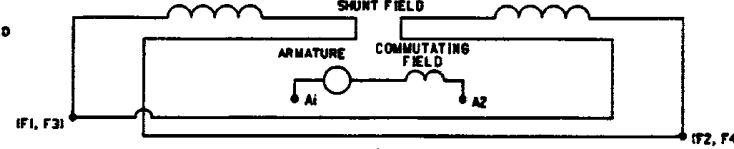
Additional Machine Notes:

DRIPPROOF FULLY GUARDED, BLOWER VENTILATED - BALL BEARINGS
 CONDUIT BOX ON RIGHT HAND SIDE FACING COMMUTATOR END
 STANDARD SHAFT DRIVE END ONLY - WITH FEET
 WITH:
 CSA STAMP
 THERMOSTAT- NORMALLY CLOSED, AC RATING- 600V MAX-
 .5A, 250V-1.5A, OR 125V-3A- DC RATING- 30V MAX-
 1.5A. MAXIMUM CURRENT BASED ON INDUCTIVE LOADS UP
 TO AND INCLUDING NEMA NO. 5 CONTACTOR.





Marks:

NO S.O.		GENERAL ELECTRIC		36A167900CA502	
REV 1		TITLE		CONT ON SHEET SH NO.	
36A167900CA502		CONNECTION DIAGRAM			
CONT ON SHEET SH NO.		FIRST MADE FOR 4 POLE - 360AT (EW)			
DIRECT CURRENT MOTOR AND GENERATOR - SHUNT WOUND 1 OR 2 CIRCUIT SHUNT FIELD - 1 CIRCUIT COMMUTATING FIELD					
VIEWS FACING COMMUTATOR END - LEADS OUT RIGHT SIDE					
					
COMMUTATING FIELD AND ARMATURE			SHUNT FIELD		
VIEWS FACING COMMUTATOR END - LEADS OUT LEFT SIDE					
					
COMMUTATING FIELD AND ARMATURE			SHUNT FIELD		
ALL EXTERNAL LEADS ARE MARKED. ALL CONNECTIONS AND TERMINATIONS EXTERNAL TO MAGNET FRAME MUST BE INSULATED PER NATIONAL ELECTRICAL CODE AND SOUND LOCAL PRACTICES. SPACE HEATERS, WHEN SPECIFIED, WILL HAVE LEADS WITH TERMINAL MARKINGS H1 AND H2. THERMOSTAT, WHEN SPECIFIED, WILL HAVE LEADS WITH TERMINAL MARKINGS P1 AND P2. ENCIRCLED NUMBERS MAY BE USED FOR PART IDENTIFICATION.					
FOR HIGH NAMEPLATE EXCITATION VOLTAGE, CONNECT SHUNT FIELD LEADS AS INDICATED					
					
MOTOR CONNECTIONS: FOR CCW ROTATION FACING COMMUTATOR END, MAKE LEADS F1 AND A1 THE SAME POLARITY. FOR CW ROTATION FACING COMMUTATOR END, MAKE LEADS F1 AND A2 THE SAME POLARITY.			GENERATOR CONNECTIONS: FOR CW ROTATION FACING COMMUTATOR END F1 POSITIVE WILL MAKE A2 POSITIVE. FOR CCW ROTATION FACING COMMUTATOR END F1 POSITIVE WILL MAKE A1 POSITIVE.		
FOR LOW NAMEPLATE EXCITATION VOLTAGE, CONNECT SHUNT FIELD LEADS AS INDICATED					
					
MOTOR CONNECTIONS: FOR CCW ROTATION FACING COMMUTATOR END MAKE LEADS (F1,F3) & A1 THE SAME POLARITY. FOR CW ROTATION FACING COMMUTATOR END, MAKE LEADS (F1,F3) & A2 THE SAME POLARITY.			GENERATOR CONNECTIONS: FOR CW ROTATION FACING COMMUTATOR END, (F1,F3) POSITIVE WILL MAKE A2 POSITIVE. FOR CCW ROTATION FACING COMMUTATOR END, (F1,F3) POSITIVE WILL MAKE A1 POSITIVE.		
94-11-01 NO S.O. DC HILL RETRACED		QC(1) CAD			
MADE BY WC HOVIS FEB 15, 1972		FILE KC13-1		36A167900CA502	
RE ISSUED CAD/DC Hill 94-11-01		GE MOTORS ERIE		DIV JR DEPT LOCATION CONT ON SHEET SH NO.	

CSX A 36A167900CA502R01



imagination at work