

Product Information Packet

November 7, 2016

Data shown is for the current revision model #. Ensure your nameplate model # matches.

Model Number:	5KS447ATE308A
Catalog Number:	E7962
Instruction Manual:	GEI-M1023
Connection Diagram:	GEM2034E-FIG8
Outline Drawing:	358B6204AE

Accessory Connection Diagrams			
Bearing Thermocouple:	None	Heater:	None
RTD:	None	Thermistor:	None
Thermostat:	None	Winding Thermocouple:	None
Bearing RTD:	None		

Table of Contents	
Specification	01
Performance Characteristics	02
Outline Drawing	03
Connection Drawing(s)	04

Marks:

MODEL NUMBER:	5KS447ATE308A	Estimated Weight:	1768 Lbs
Outline Drawing:	358B6204AE	Time Rating:	CONT
Connection Diagram:	GEM2034E-FIG8	Enclosure:	DP
Instruction Book:	GEI-M1023	Encl Construction:	OPEN
Design Code:	49AD3000A	Ambient Max(°C):	40
Type:	KS	Alt Ambient Max(°C):	--
Frame:	447T	Insulation Class:	F
Phases:	3	NEMA Design:	A
Poles:	6	Nominal Efficiency:	95.4 %
Output Power:	150HP 111KW	Guaranteed Efficiency:	94.5
RPM:	1190	3/4 Load Efficiency:	95.9
Voltage:	460	KVA Code:	G
Hertz:	60	Max KVAR:	39.2
Amps - FL:	174	Power Factor:	83
Service Factor:	1.15	Bearing - DE:	6318
Alt Service Factor:	--	Bearing - ODE:	6318

Enclosure is Dripproof

Stamped Nameplate Notes:**Additional Information:**

6 POLE DP
 LRA@460V: 1091 AMPS
 NO. OF MOTOR LEADS: 6
 CONDUIT BOX VOLUME (IN³): 1240
 CONDUIT BOX MTL: STAMPED STEEL
 GREASE TYPE: CHEVRON SRI-2 POLYUREA GREASE
 NOT USABLE AT 200V
 50 HZ DATA: 125HP, 400V, 172 AMPS @ 1.0SF, 990RPM
 SOUND POWER: 81.9
 DMK, 06/04, UPDATED 4/2005
 INVERTER DUTY PER NEMA MG1 PART 31
 FOR VARIABLE TORQUE LOADS

Performance Characteristics

1st Winding 1st Connection

Design: 49AD3000A

Marks:

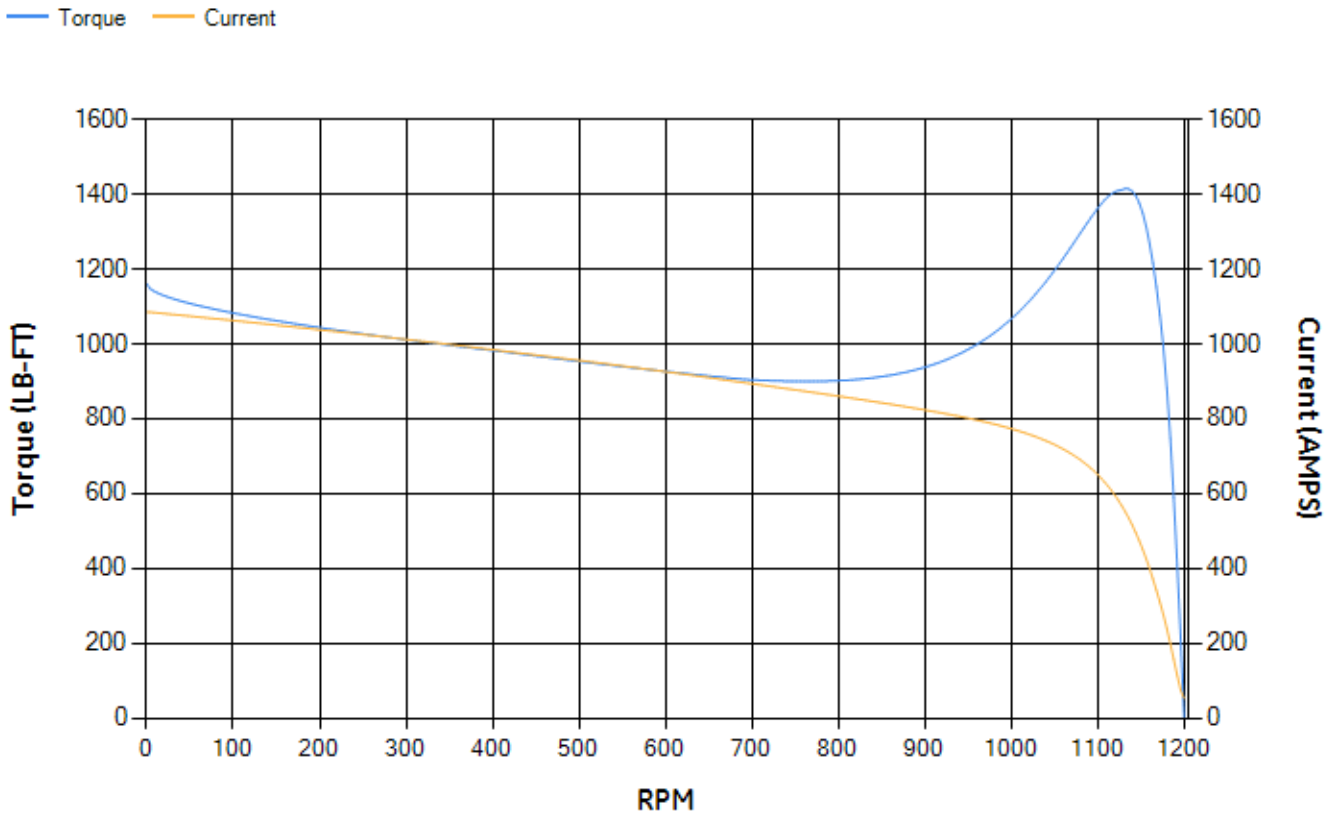
LOAD %	125.0	115.0	100.0	75.0	50.0	25.0	0.0
% EFF	94.78	95.09	95.67	95.88	95.78	94.02	0.00
% PF	84.39	84.67	84.58	82.56	75.83	55.73	3.57
AMPS	219.4	200.53	173.5	133.03	96.64	66.99	52.32

TORQ(FL)#FT	663.65	TORQ(LR)%FL	174.89	TORQ(BD)%FL	212.13
AMPS(LR)	1085.57	PF AT START	0.32		

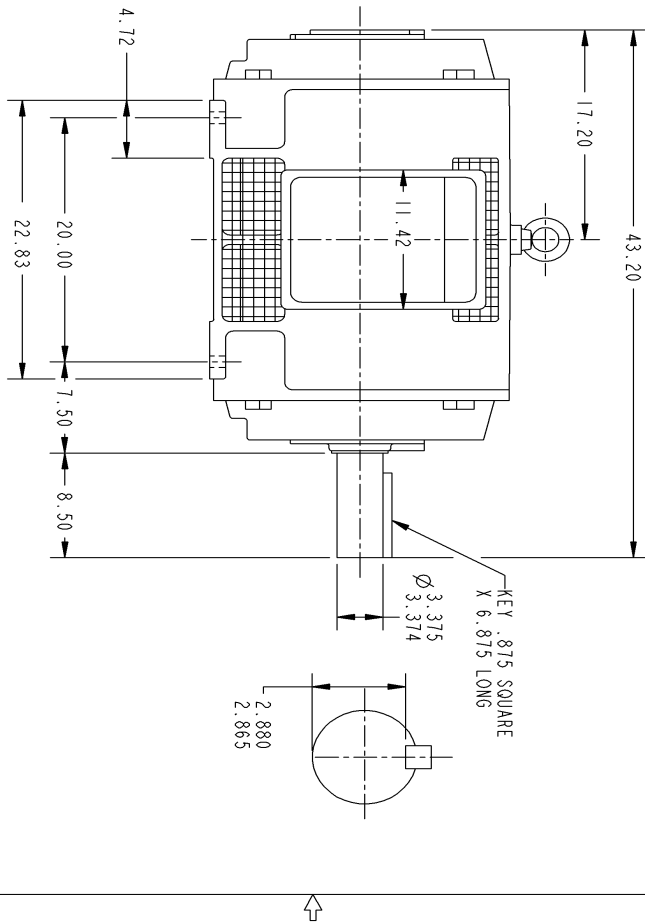
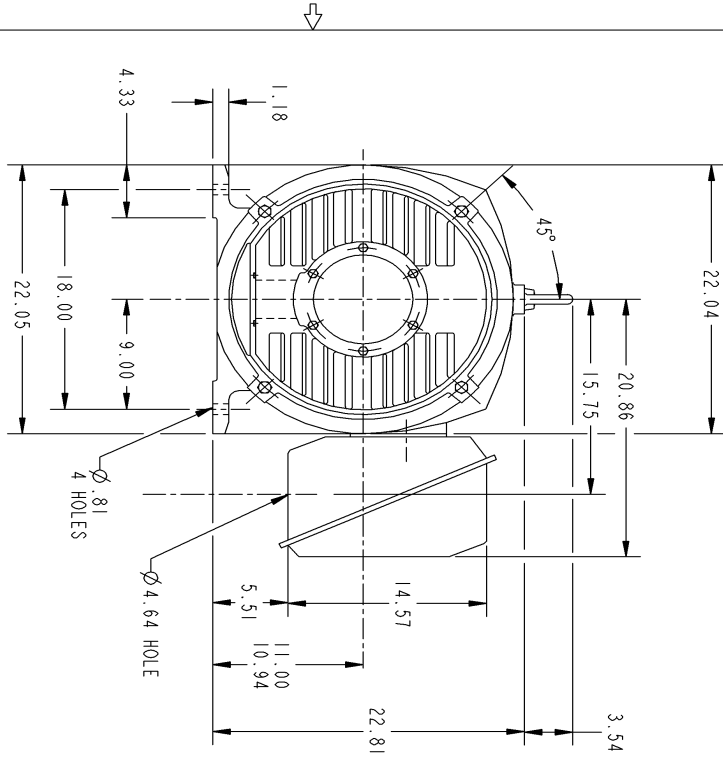
This motor is capable of two cold or one hot start with a maximum connected load inertia of 9727 Lb-Ft Sq (409.51 Kg-meter Sq)at 100% voltage, where the load torque varies with the square of the speed. Acceleration time with maximum inertia and the above load type is 48 seconds. Safe stall time at 100% voltage is 81 seconds cold, 58 seconds hot. Rotor inertia is 78.85 Lb-Ft Sq (3.32 Kg-meter Sq).

Open Circuit A-C:	0.794	Short Circuit D-C:	0.032
Short Circuit A-C:	0.038	X/R Ratio:	12.161
Stator Slots:	72	Rotor Slots:	58

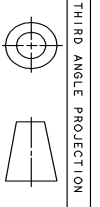
Speed Torque Current Curve (First Connection, First Speed)



Marks:



NOTE:
1. ALL DIMENSIONS ARE IN INCHES



GE PROPRIETARY AND CONFIDENTIAL INFORMATION
This document is the property of General Electric Company ("GE") and contains proprietary information of GE. This document is loaned to the express condition that neither it nor the information contained therein shall be disclosed to any third party without the prior written consent of GE. The information shall be used by the recipient only as approved expressly by GE Industrial Systems. This document shall be returned to GE upon its request. This document is controlled under U.S. export control laws and regulations.

358B6204AE

REV 1

SHEET 1

REVISIONS

REV.	DESCRIPTION	DATE	APPROVED
1	ISAAC 04-2270 PRABHAKAR	09/28/04	

SIGNATURES	DATE	TITLE
MANO	12/12/02	GENERAL ELECTRIC COMPANY
DESIGNER	12/12/02	GE Industrial Systems
ENGINEER	12/12/02	
ISSUED	12/12/02	

SCALE: B

447T - CAST IRON ODP FOOTED

358B6204AE

SHEET 1 of 1

Marks:

Connection Diagram
GEM2034E-FIG8

