

Product Information Packet

January 12, 2017

Data shown is for the current revision model #. Ensure your nameplate model # matches.

Model Number:	5KS324CAG305B
Catalog Number:	E9292
Instruction Manual:	GEI-56128
Connection Diagram:	GEM2034E-FIG3
Outline Drawing:	225B4700AA

Accessory Connection Diagrams			
Bearing Thermocouple:	None	Heater:	None
RTD:	None	Thermistor:	None
Thermostat:	3027JE-2	Winding Thermocouple:	None
Bearing RTD:	None		

Table of Contents	
Specification	01
Performance Characteristics	02
Outline Drawing	03
Connection Drawing(s)	04

Marks:

MODEL NUMBER:	5KS324CAG305B	Estimated Weight:	730 Lbs
Outline Drawing:	225B4700AA	Time Rating:	CONT
Connection Diagram:	GEM2034E-FIG3	Enclosure:	TEFC
Instruction Book:	GEI-56128	Encl Construction:	XP
Design Code:	32ED3006A	Ambient Max(°C):	40
Type:	KS	Alt Ambient Max(°C):	XX
Frame:	324T	Insulation Class:	F
Phases:	3	NEMA Design:	A
Poles:	6	Nominal Efficiency:	93.0 %
Output Power:	25HP 18.5KW	Guaranteed Efficiency:	91.7
RPM:	1180	3/4 Load Efficiency:	93.5
Voltage:	230/460	KVA Code:	H
Hertz:	60	Max KVAR:	7.2
Amps - FL:	61.8/30.9	Power Factor:	81.5
Service Factor:	1.0	Bearing - DE:	6312ZC3
Alt Service Factor:	XX	Bearing - ODE:	6312ZC3

Enclosure is Totally Enclosed Fan-Cooled

Stamped Nameplate Notes:

EXPLOSION PROOF MOTOR
TEMP CODE T3C
THERMOSTAT LEADS TB1-TB2:TRIP

Additional Information:

STAMP NP249A5571AD AS FOLLOWS:
CL I GR C&D CL II GR F&G
6 POLE, T SHAFT EXTN
(3)NC THERMOSTAT LEADS TO MAIN CONDUIT BOX
250 Cu. In. CBOX

Performance Characteristics

1st Winding 1st Connection

Design: 32ED3006A

Marks:

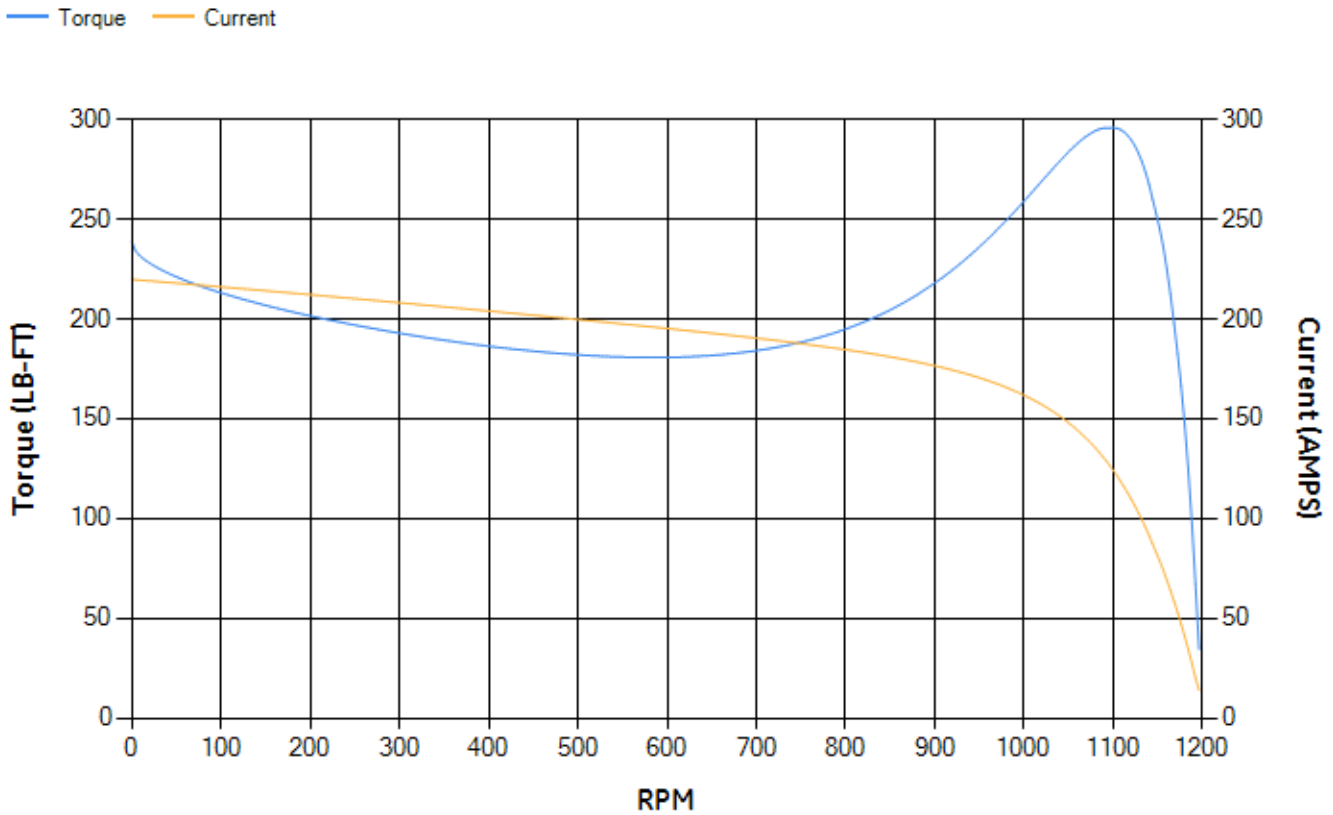
LOAD %	125.0	115.0	100.0	75.0	50.0	25.0	0.0
% EFF	92.16	92.57	93.27	93.5	93.09	89.84	0.00
% PF	82.22	82.23	81.71	78.82	71.04	51.04	5.63
AMPS	38.6	35.35	30.7	23.81	17.69	12.76	10.08

TORQ(FL)#FT	111.02	TORQ(LR)%FL	215.29	TORQ(BD)%FL	265.17
AMPS(LR)	219.78	PF AT START	0.33		

This motor is capable of two cold or one hot start with a maximum connected load inertia of 1978 Lb-Ft Sq (83.27 Kg-meter Sq)at 100% voltage, where the load torque varies with the square of the speed. Acceleration time with maximum inertia and the above load type is 45 seconds. Safe stall time at 100% voltage is 99 seconds cold, 72 seconds hot. Rotor inertia is 15.03 Lb-Ft Sq (0.63 Kg-meter Sq).

Open Circuit A-C:	0.556	Short Circuit D-C:	0.016
Short Circuit A-C:	0.024	X/R Ratio:	5.981
Stator Slots:	54	Rotor Slots:	42

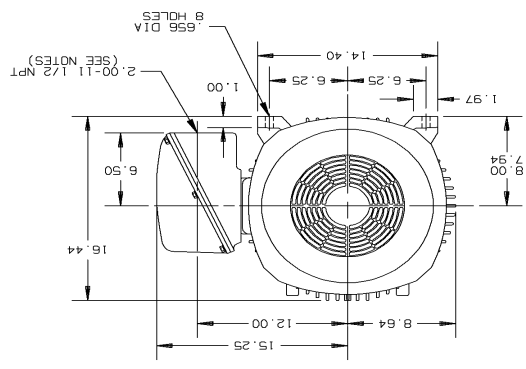
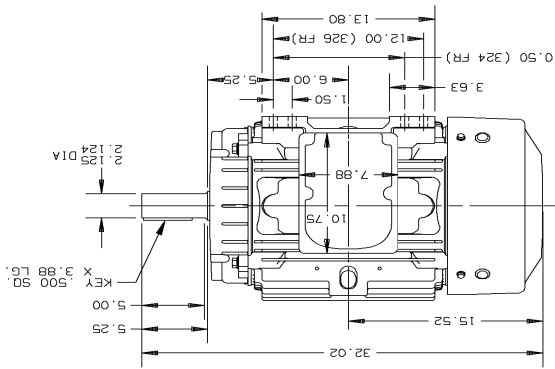
Speed Torque Current Curve (First Connection, First Speed)



Marks:

SHEET 1 OF 1		SCALE 1:1	DATE 04/12/82
CNO NO. F320:225B4700AA		SIZE F320:225B4700AA	DATE 04/12/82
DRAWN BY: MT DUFFS		CHECKED BY: [Signature]	DATE 04/06/82
DESIGNED BY: [Signature]		APPROVED BY: [Signature]	DATE 04/06/82
GE Motors Fort Wayne, Indiana METRIC EQUIV. 225B4700AD			

APPROVED REVISIONS: REVISION 1 2. BY: [Signature] 3. BY: [Signature] 4. BY: [Signature]	NOTES: 1. CONDUIT BOX MAY BE PLACED WITH THE ENTRANCE DOWN, UP, OR ON EITHER SIDE 2. F-1 ASM HAS CONDUIT BOX ON OPPOSITE SIDE 3. F-2 ASM HAS CONDUIT BOX ON OPPOSITE SIDE
---	--

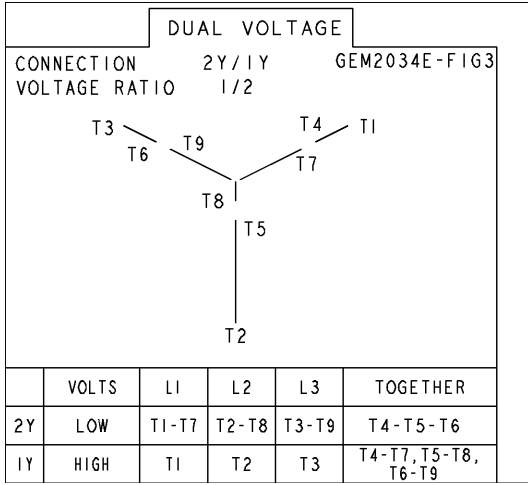


REV	DATE	DESCRIPTION
1	09/21/83	ADDED METRIC EQUIVALENT TM
2	10/17/91	910-963 CLF

SIZE: 225B4700AA 1 REV 2

Marks:

Connection Diagram
GEM2034E-FIG3



Thermostat Connection
3027JE-2

FIG. 2
THERMOSTAT CONN.

