

Product Information Packet

November 9, 2016

Data shown is for the current revision model #. Ensure your nameplate model # matches.

Model Number:	5KS365LAA114D2
Catalog Number:	M7910
Instruction Manual:	GEI-56128
Connection Diagram:	GEM2034E-FIG7
Outline Drawing:	239CC200AB

Accessory Connection Diagrams			
Bearing Thermocouple:	None	Heater:	None
RTD:	None	Thermistor:	None
Thermostat:	None	Winding Thermocouple:	None
Bearing RTD:	None		

Table of Contents

Specification	01
Performance Characteristics	02
Outline Drawing	03
Connection Drawing(s)	04
Spare parts	05



Marks:

MODEL NUMBER:	5KS365LAA114D2	Estimated Weight:	1000 Lbs
Outline Drawing:	239CC200AB	Time Rating:	CONT
Connection Diagram:	GEM2034E-FIG7	Enclosure:	TEFC
Instruction Book:	GEI-56128	Encl Construction:	SD
Design Code:	36BD0116B	Ambient Max(°C):	40
Type:	KS	Alt Ambient Max(°C):	--
Frame:	365TS	Insulation Class:	F
Phases:	3	NEMA Design:	A
Poles:	2	Nominal Efficiency:	94.5 %
Output Power:	75HP 55.5KW	Guaranteed Efficiency:	--
RPM:	3575	3/4 Load Efficiency:	--
Voltage:	575	KVA Code:	H
Hertz:	60	Max KVAR:	26.6
Amps - FL:	71.2	Power Factor:	83.5
Service Factor:	1.15	Bearing - DE:	6314ZC3
Alt Service Factor:	--	Bearing - ODE:	6314ZC3

Enclosure is Totally Enclosed Fan-Cooled

Stamped Nameplate Notes:

INVERTER DUTY PER NEMA MG1 PART 31
 ALTERNATE RATING FOR PWM CONTROL:1.0SF 40C AMBIENT
 VAR TORQUE RANGE 0-60 HZ

Additional Information:

2P - TS EXTN
 346 CU IN - 3.00" NPT
 OIL RESISTANT SLEEVING ON LEADS
 F1 MOUNTING
 VIBRATION LIMIT 0.15 INCH PER SEC
 TEFC SD STOCK 10/19/2016
 ENGINEERED BY: BALASUBRAMANIANH/BILURP

Performance Characteristics

1st Winding 1st Connection

Design: 36BD0116B

Marks:

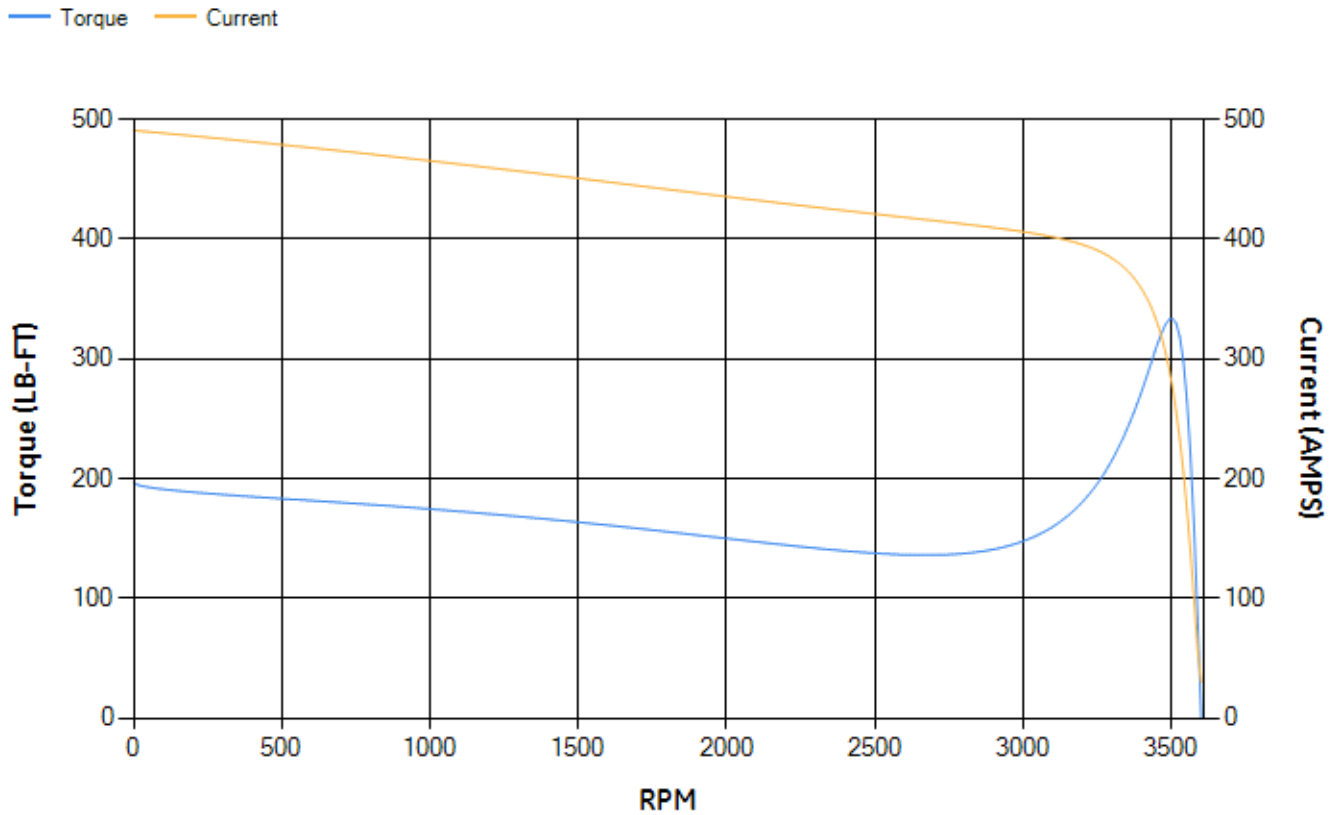
LOAD %	125.0	115.0	100.0	75.0	50.0	25.0	0.0
% EFF	94.55	94.71	95.08	94.88	94.18	90.88	0.00
% PF	85.78	85.07	83.47	78.53	67.96	45.16	3.97
AMPS	86.55	80.16	70.63	56.53	43.87	34.21	29.71

TORQ(FL)#FT	110.1	TORQ(LR)%FL	178.86	TORQ(BD)%FL	302.81
AMPS(LR)	490.76	PF AT START	0.32		

This motor is capable of two cold or one hot start with a maximum connected load inertia of 162 Lb-Ft Sq (6.82 Kg-meter Sq) at 100% voltage, where the load torque varies with the square of the speed. Acceleration time with maximum inertia and the above load type is 15 seconds. Safe stall time at 100% voltage is 36 seconds cold, 18 seconds hot. Rotor inertia is 7.9 Lb-Ft Sq (0.33 Kg-meter Sq).

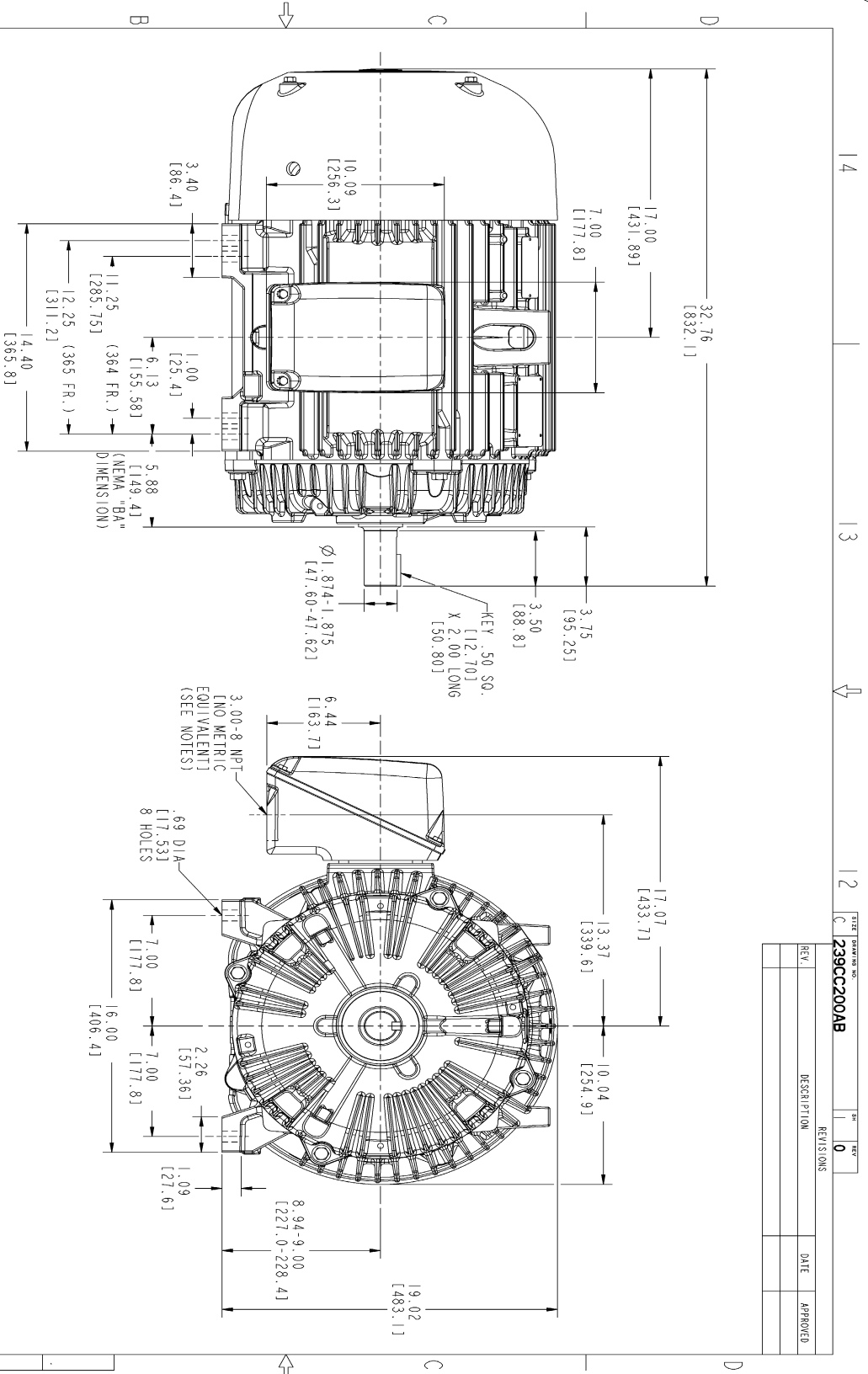
Open Circuit A-C:	0.902	Short Circuit D-C:	0.021
Short Circuit A-C:	0.051	X/R Ratio:	8.018
Stator Slots:	48	Rotor Slots:	38

Speed Torque Current Curve (First Connection, First Speed)



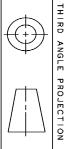
NAME:501352727 OBJECT:239CC200AB DATE:31-Jul-07 12:18:23

Marks:



NOTES :

1. CONDUIT BOX MAY BE PLACED WITH THE ENTRANCE DOWN, UP OR ON EITHER SIDE.
2. F-1 ASM AS SHOWN.
3. F-2 ASM-HAS CONDUIT BOX ON OPPOSITE SIDE.
4. BRACKETED DIMENSIONS ARE METRIC (MILLIMETERS).



REV.	DESCRIPTION	DATE	APPROVED

SIGNATURES	DATE	GE Industrial Systems GENERAL ELECTRIC COMPANY Fort Wayne, Indiana
DESIGNED	01/26/07	
DRAWN	01/26/07	OUTLINE 364/365 TS TFC ESP 346 CU. IN. CONDUIT BOX 239CC200AB
CHECKED	01/26/07	
ISSUED	01/26/07	SCALE: 0.250 REF. NO.: SHEET 1 OF 1
APPLIED PRACTICES		REV: 0

Marks:

Connection Diagram
GEM2034E-FIG7



End shield Assembly		
Part Description	DE Side Part#	ODE Side Part#
End Shield	115E4250AA1	115E4250LK1
Bearing	235A2616AA01	235A2616AA01
Slinger/Inproseal	149C4399G05	149C4399G05

Fan & Fan Cover Assembly	
Part Description	Part#
Fan	159C6700G02
Fan Cover	128D6810AA1

Conduit & Accessories Box Assembly	
Part Description	Part#
Conduit Box	149C4429AA2

Mechanical Accessories	
Part Description	Part#
Brake	
Tachometer	