

# Product Information Packet

November 9, 2016

Data shown is for the current revision model #. Ensure your nameplate model # matches.

<b>Model Number:</b>	<b>5KS364SAA218D10</b>
<b>Catalog Number:</b>	<b>M9921</b>
<b>Instruction Manual:</b>	GEI-56128
<b>Connection Diagram:</b>	GEM2034E-FIG7
<b>Outline Drawing:</b>	239C6200AB

Accessory Connection Diagrams			
<b>Bearing Thermocouple:</b>	None	<b>Heater:</b>	None
<b>RTD:</b>	None	<b>Thermistor:</b>	None
<b>Thermostat:</b>	None	<b>Winding Thermocouple:</b>	None
<b>Bearing RTD:</b>	None		

## Table of Contents

Specification	01
Performance Characteristics	02
Outline Drawing	03
Connection Drawing(s)	04
Spare parts	05



**Marks:**

<b>MODEL NUMBER:</b>	<b>5KS364SAA218D10</b>	<b>Estimated Weight:</b>	970 Lbs
<b>Outline Drawing:</b>	239C6200AB	<b>Time Rating:</b>	CONT
<b>Connection Diagram:</b>	GEM2034E-FIG7	<b>Enclosure:</b>	TEFC
<b>Instruction Book:</b>	GEI-56128	<b>Encl Construction:</b>	X\$D
<b>Design Code:</b>	36BD1188A	<b>Ambient Max(°C):</b>	40
<b>Type:</b>	KS	<b>Alt Ambient Max(°C):</b>	60
<b>Frame:</b>	364TS	<b>Insulation Class:</b>	H
<b>Phases:</b>	3	<b>NEMA Design:</b>	B
<b>Poles:</b>	4	<b>Nominal Efficiency:</b>	95.0 %
<b>Output Power:</b>	60HP 44.4KW	<b>Guaranteed Efficiency:</b>	94.5
<b>RPM:</b>	1780	<b>3/4 Load Efficiency:</b>	95.2
<b>Voltage:</b>	460	<b>KVA Code:</b>	G
<b>Hertz:</b>	60	<b>Max KVAR:</b>	20.9
<b>Amps - FL:</b>	71.7	<b>Power Factor:</b>	82.5
<b>Service Factor:</b>	1.15	<b>Bearing - DE:</b>	6314ZC3
<b>Alt Service Factor:</b>	1.00	<b>Bearing - ODE:</b>	6314ZC3

**Enclosure is Totally Enclosed Fan-Cooled**

---

**Stamped Nameplate Notes:**

STAMP NP249A5564P051 AS BELOW:  
 MODEL:5KS364SAA218D10 S/N: XXX  
 CSA CERTIFIED CSA09.2216219 FOR EX NA IIC 200 C GC  
 CL 1 ZONE2 AEX NA IIC 200C;CL 1 DIV2 GRP ABCD 200C  
 IN -40C <= AMB <= 40C, 1.0 SF ON SINE-WAVE PWR  
 SURF TEMP 260C AT 1.15SF ON SINE-WAVE PWR  
 OR 200C VT OR 230C CT OR 200C CHP PWM CONTROL  
 ALTERNATE RATING FOR PWM CONTROL 1.0SF 40C AMB  
 VT 0-60 HZ, CT 6-60 HZ, CHP 60-90 HZ.

**Additional Information:**

4P - TS EXTN  
 C/BOX 346 CU IN - 3.00" NPT  
 OIL RESISTANT SLEEVING ON LEADS  
 F1 MOUNTING

**Performance Characteristics**

1st Winding 1st Connection

**Design: 36BD1188A**

**Marks:**

LOAD %	125.0	115.0	100.0	75.0	50.0	25.0	0.0
% EFF	94.38	94.62	95.12	95.19	94.85	92.38	0.00
% PF	84.34	83.77	82.38	77.77	67.55	44.92	3.18
AMPS	88.19	81.47	71.5	56.89	43.82	33.83	29.16

**TORQ(FL)#FT** 176.81  
**AMPS(LR)** 412.9

**TORQ(LR)%FL** 160.18  
**PF AT START** 0.31

**TORQ(BD)%FL** 260.31

This motor is capable of two cold or one hot start with a maximum connected load inertia of 1190 Lb-Ft Sq (50.1 Kg-meter Sq) at 100% voltage, where the load torque varies with the square of the speed. Acceleration time with maximum inertia and the above load type is 33 seconds. Safe stall time at 100% voltage is 76 seconds cold, 39 seconds hot. Rotor inertia is 12.22 Lb-Ft Sq (0.51 Kg-meter Sq).

**Open Circuit A-C:** 0.602

**Short Circuit D-C:** 0.024

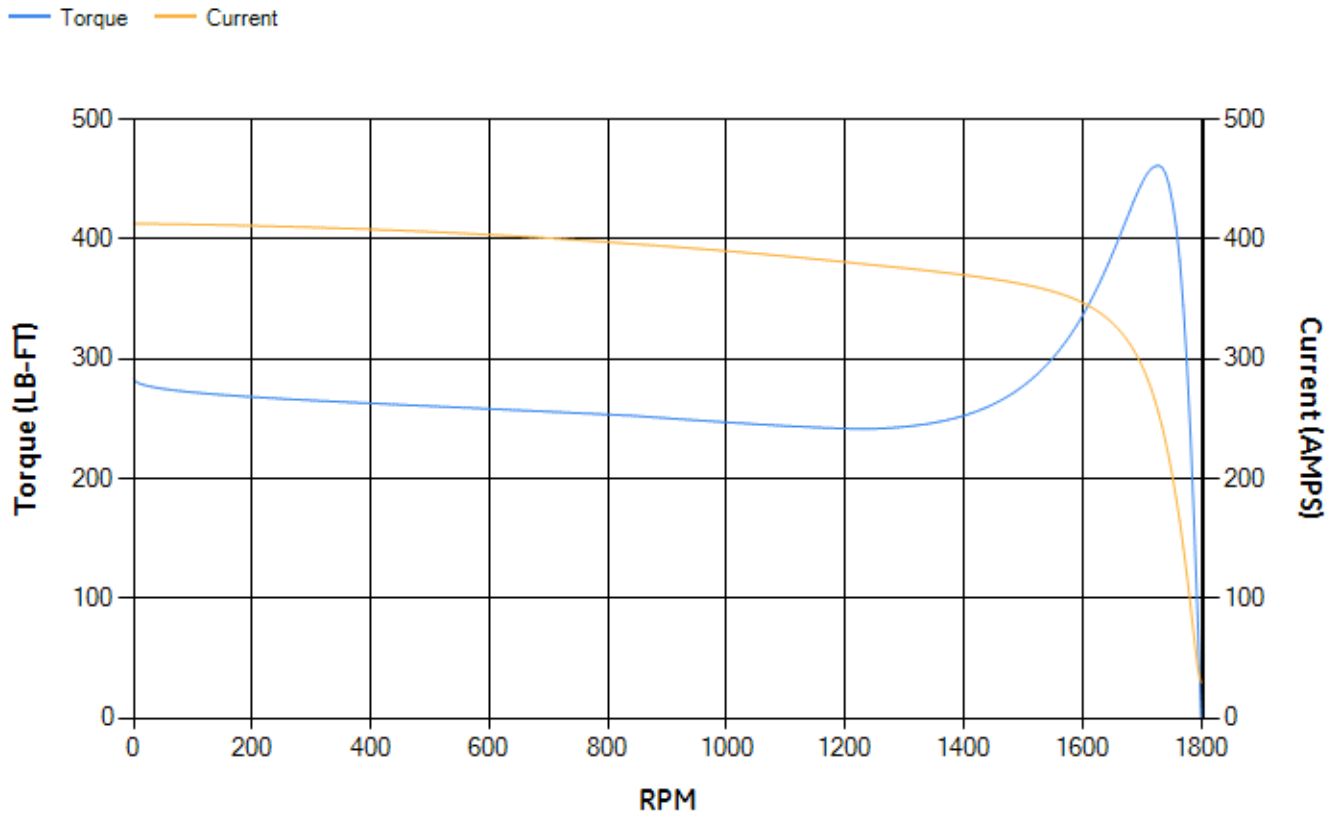
**Short Circuit A-C:** 0.035

**X/R Ratio:** 9.207

**Stator Slots:** 60

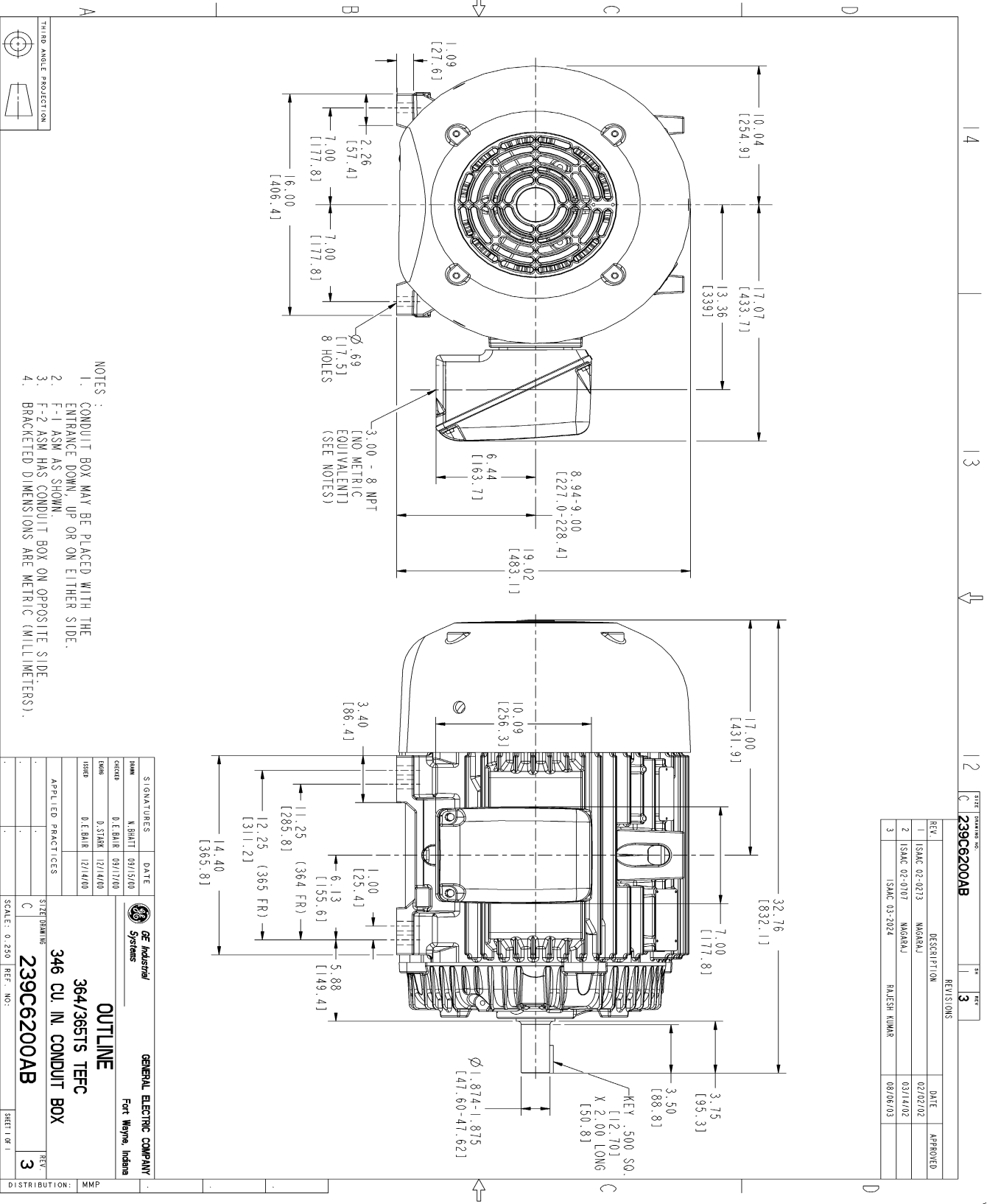
**Rotor Slots:** 50

**Speed Torque Current Curve (First Connection, First Speed)**

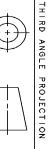


NAME: 103016807 OBJECT: 239C6200AB DATE: 07-Aug-03 23:40:52

Marks:



REV.	DESCRIPTION	DATE	APPROVED
1	ISAC 02-0213 MAGRAJ	02/02/02	
2	ISAC 02-0707 MAGRAJ	03/14/02	
3	ISAC 03-2024 RAJESH KUMAR	08/06/03	



THIRD ANGLE PROJECTION

NOTES :

1. CONDUIT BOX MAY BE PLACED WITH THE ENTRANCE DOWN, UP OR ON EITHER SIDE.
2. F-1 ASM AS SHOWN.
3. F-2 ASM HAS CONDUIT BOX ON OPPOSITE SIDE.
4. BRACKETED DIMENSIONS ARE METRIC (MILLIMETERS).

SIGNATURES	DATE	GENERAL ELECTRIC COMPANY
DESIGNED BY: K. BHATT	09/15/00	 <b>OUTLINE</b> 364/365TS TFCF 346 CU. IN. CONDUIT BOX
CHECKED BY: D. E. BAIR	09/17/00	
DRAWN BY: D. STARK	12/14/00	
DATE: 08/06/03	12/14/00	

DISTRIBUTION: MMP

SCALE: 0.250 REF. NO.: 239C6200AB SHEET NO. 3

Marks:

**Connection Diagram**  
**GEM2034E-FIG7**



End shield Assembly		
Part Description	DE Side Part#	ODE Side Part#
End Shield	115E4250AA1	115E4250LK1
Bearing	235A2616AA01	235A2616AA01
Slinger/Inproseal	149C4399G05	149C4399G05

Fan & Fan Cover Assembly	
Part Description	Part#
Fan	159C7100AA1
Fan Cover	128D6810AA1

Conduit & Accessories Box Assembly	
Part Description	Part#
Conduit Box	149C4429AA2

Mechanical Accessories	
Part Description	Part#
Brake	
Tachometer	