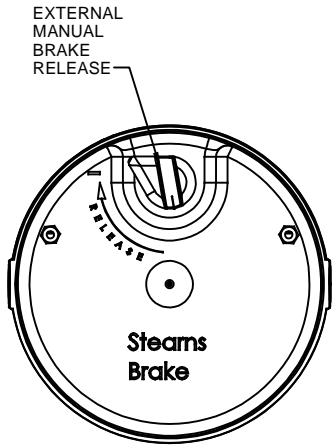
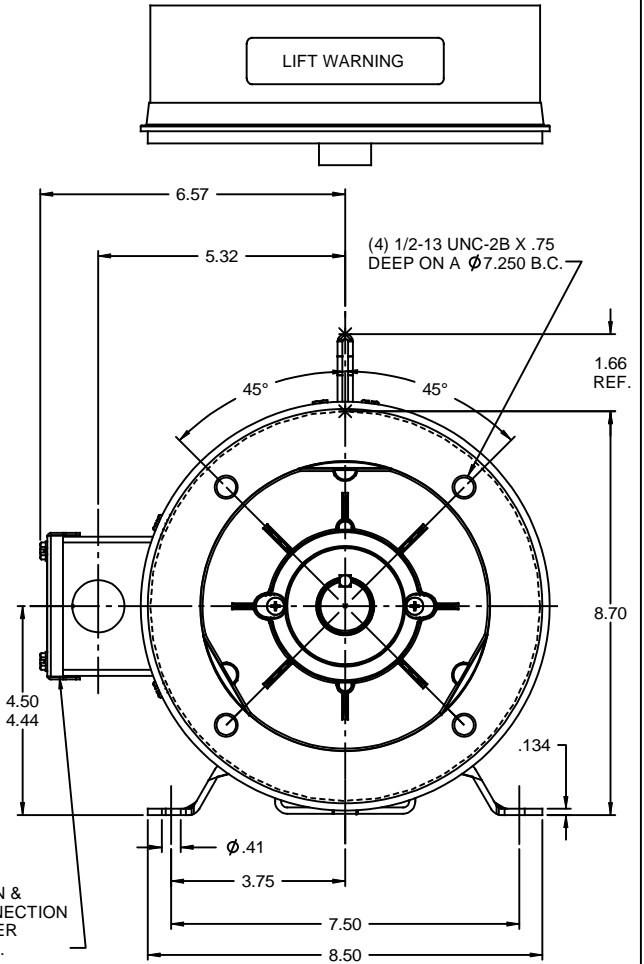
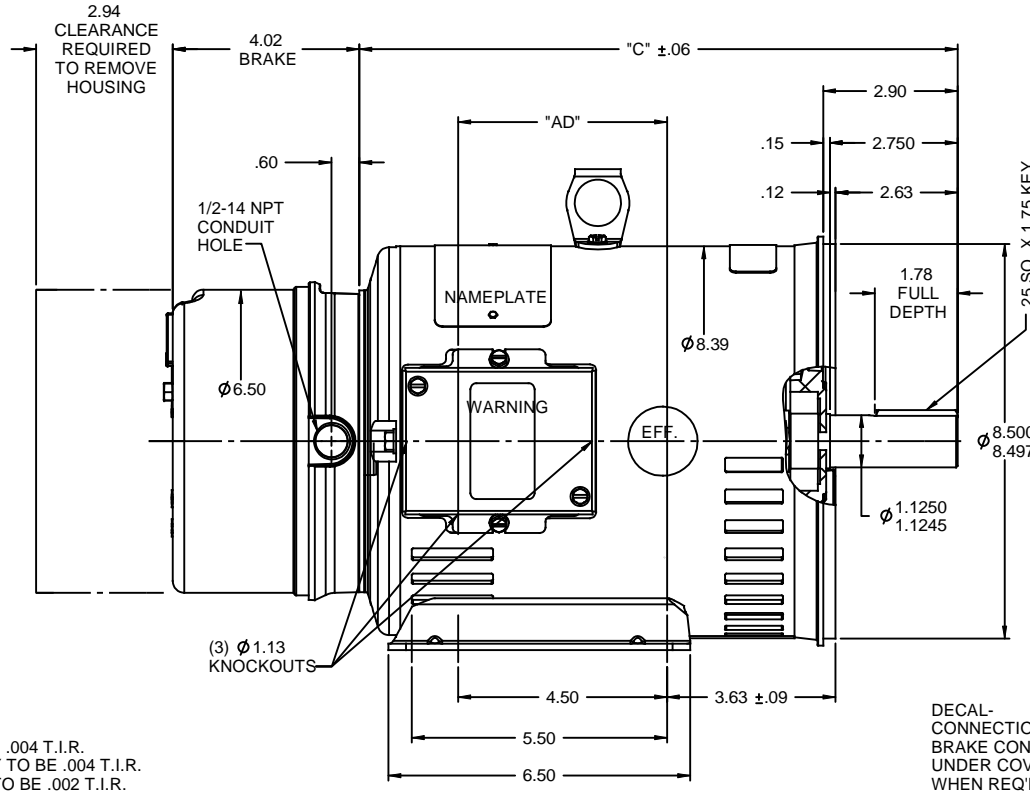


RBC PROPRIETARY AND CONFIDENTIAL INFORMATION
 This document is the property of REGAL BELOIT CORPORATION ("RBC") including its subsidiaries and divisions and contains proprietary information of RBC. This document is loaned on the express condition that neither it nor the information contained therein shall be disclosed to others without the express written consent of RBC, and that the information shall be used by the recipient only as approved expressly by RBC. This document shall be returned to RBC upon its request. This document may be subject to certain restrictions under U.S. export control laws and regulations.



Steam Brake



DECAL- CONNECTION & BRAKE CONNECTION UNDER COVER WHEN REQ'D.

GASKETS THROUGHOUT
 MAXIMUM FACE RUNOUT TO BE .004 T.I.R.
 MAXIMUM PILOT ECCENTRICITY TO BE .004 T.I.R.
 PERMISSIBLE SHAFT RUNOUT TO BE .002 T.I.R.
 BASE & C-FACE MOUNTING TAPS TO BE SQUARE & PARALLEL TO EACH OTHER ± 1/32 MAX.

DASH NO.	"C"	"AD"
800	12.39	4.00
850	12.89	4.50
900	13.39	5.00
950	13.89	5.50
1000	14.39	6.00
1050	14.89	6.50
1100	15.39	7.00
1150	15.89	7.50

TOLERANCES UNLESS SPECIFIED		REGAL BELOIT CORPORATION		DRAWN VS 6/07/07
DEC	INCHES			CHK RDW 6/07/07
X	±.1			APPR
XX	±.03	TITLE OUTLINE - 180TC FRAME		SCALE 3:8
XXX	±.005	DRIP PROOF - RIGID "C"		REF OLG131558
XX	±.0005	MATL BRAKE MOTOR		FMF
NO	REVISION	BY & DATE	CHK ANG ±1/2°	PAGE OF
	THIRD ANGLE PROJECTION		RFP	REV
			PREV	SIZE DRAWING NO
			NETWORK FILE NAME	B 035525