

Product Information Packet

January 27, 2017

Data shown is for the current revision model #. Ensure your nameplate model # matches.

Model Number:	5KAF143SAA202C
Catalog Number:	M9300
Instruction Manual:	GEI-56128
Connection Diagram:	GEM2034E-FIG3
Outline Drawing:	4002B5814SBP5283

Accessory Connection Diagrams			
Bearing Thermocouple:	None	Heater:	None
RTD:	None	Thermistor:	None
Thermostat:	3027JE-1	Winding Thermocouple:	None
Bearing RTD:	None		

Table of Contents

Specification	01
Performance Characteristics	02
Outline Drawing	03
Connection Drawing(s)	04
Spare parts	05



Marks:

MODEL NUMBER:	5KAF143SAA202C	Estimated Weight:	43 Lbs
Outline Drawing:	4002B5814SBP5283	Time Rating:	CONT
Connection Diagram:	GEM2034E-FIG3	Enclosure:	TENV
Instruction Book:	GEI-56128	Encl Construction:	A\$D
Design Code:	14BD1068AB	Ambient Max(°C):	40
Type:	KAF	Alt Ambient Max(°C):	--
Frame:	143TCZ	Insulation Class:	H
Phases:	3	NEMA Design:	--
Poles:	4	Nominal Efficiency:	86.5 %
Output Power:	1.5HP 1.1KW	Guaranteed Efficiency:	84.0
RPM:	1740	3/4 Load Efficiency:	86.5
Voltage:	230/460	KVA Code:	M
Hertz:	60	Max KVAR:	0.9
Amps - FL:	4.4/2.2	Power Factor:	74.0
Service Factor:	1.00	Bearing - DE:	6206ZC3
Alt Service Factor:	--	Bearing - ODE:	6205ZC3

Enclosure is Totally Enclosed Non-Vented

Stamped Nameplate Notes:

THERMOSTAT LEADS TB1-TB2

IP 55

HP RPM VOLTS HZ AMPS

1.5 2610 230/460 90 3.8/1.9

1.5 1740 230/460 60 4.4/2.2

0 0 16/33 2.1 4.4/2.2

SPEED RANGE CONST TORQUE 0-1740 RPM

SPEED RANGE CONST HP 1740-2610 RPM

SF 1.00 - SINE 1.00 ASD - ASD TYPE PWM - POLES 4

CLASS H INS WITH CLASS B RISE AT 1.00SF,

PWM OPERATION

INVERTER DUTY

Additional Information:

4P - TZ EXTN

STANDARD FLOOR MOUNT

C/BOX 30 CU IN-0.75 NPT

F1 CONDUIT BOX MOUNTING

AUX LEADS EXIT WITH MOTOR LEADS

"C" FACE AT DE ENDSHIELD

INPRO SEAL DE

ODE PROVISION FOR MTG TACH WITH 1.50" EXTEN & SHAFT COVER

OIL RESISTANT SLEEVING ON LEADS

SHAFT GROUNDING RING MOUNTED ON DE BRG CAP



Performance Characteristics

1st Winding 1st Connection

Design: 14BD1068AB

Marks:

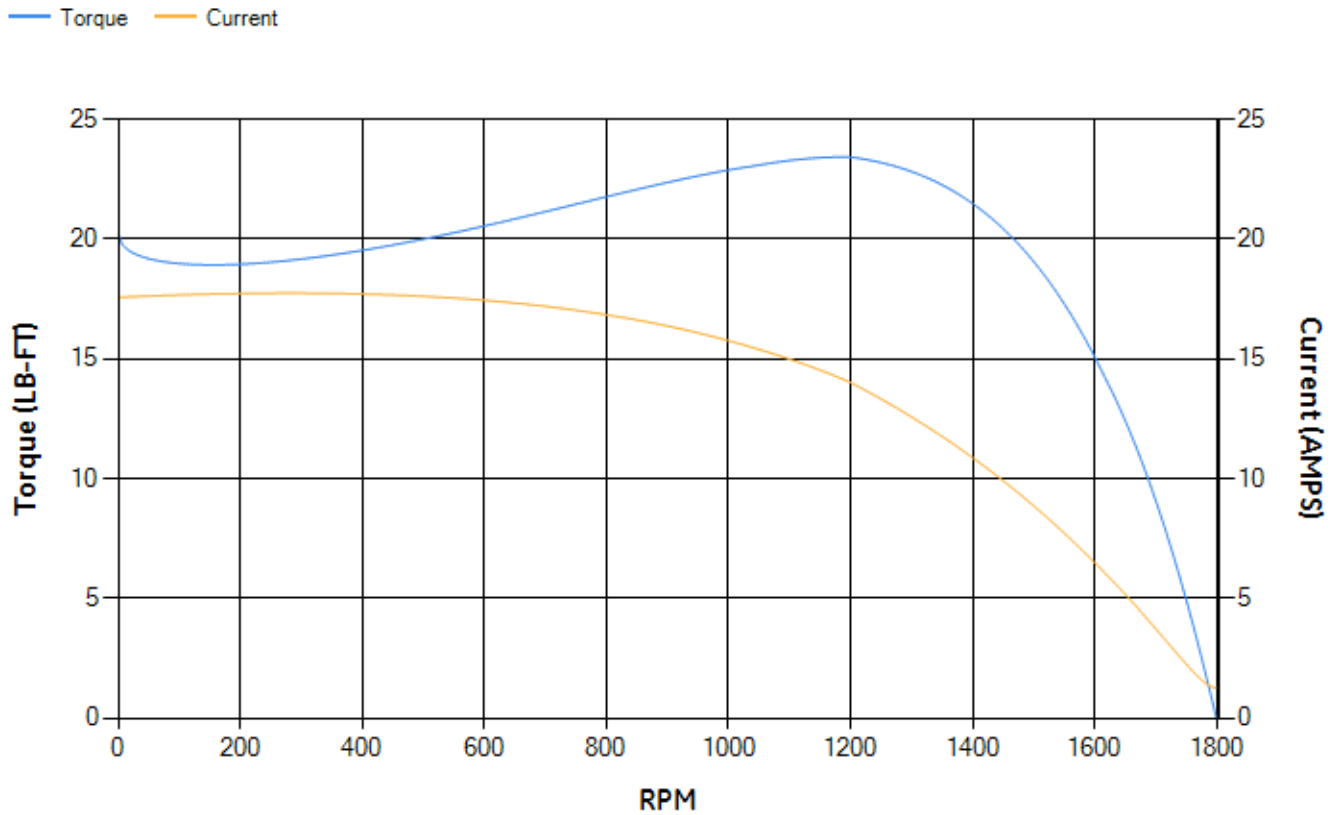
LOAD %	125.0	115.0	100.0	75.0	50.0	25.0	0.0
% EFF	85.38	85.84	86.55	86.49	84.86	77.49	0.00
% PF	79.82	77.86	75.8	65.43	51.89	32.1	6.77
AMPS	2.58	2.42	2.13	1.86	1.59	1.41	1.25

TORQ(FL)#FT	4.53	TORQ(LR)%FL	446.51	TORQ(BD)%FL	499.25
AMPS(LR)	17.57	PF AT START	0.68		

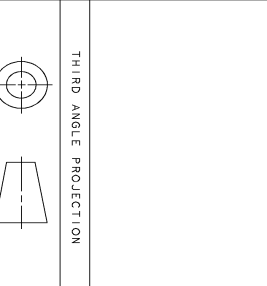
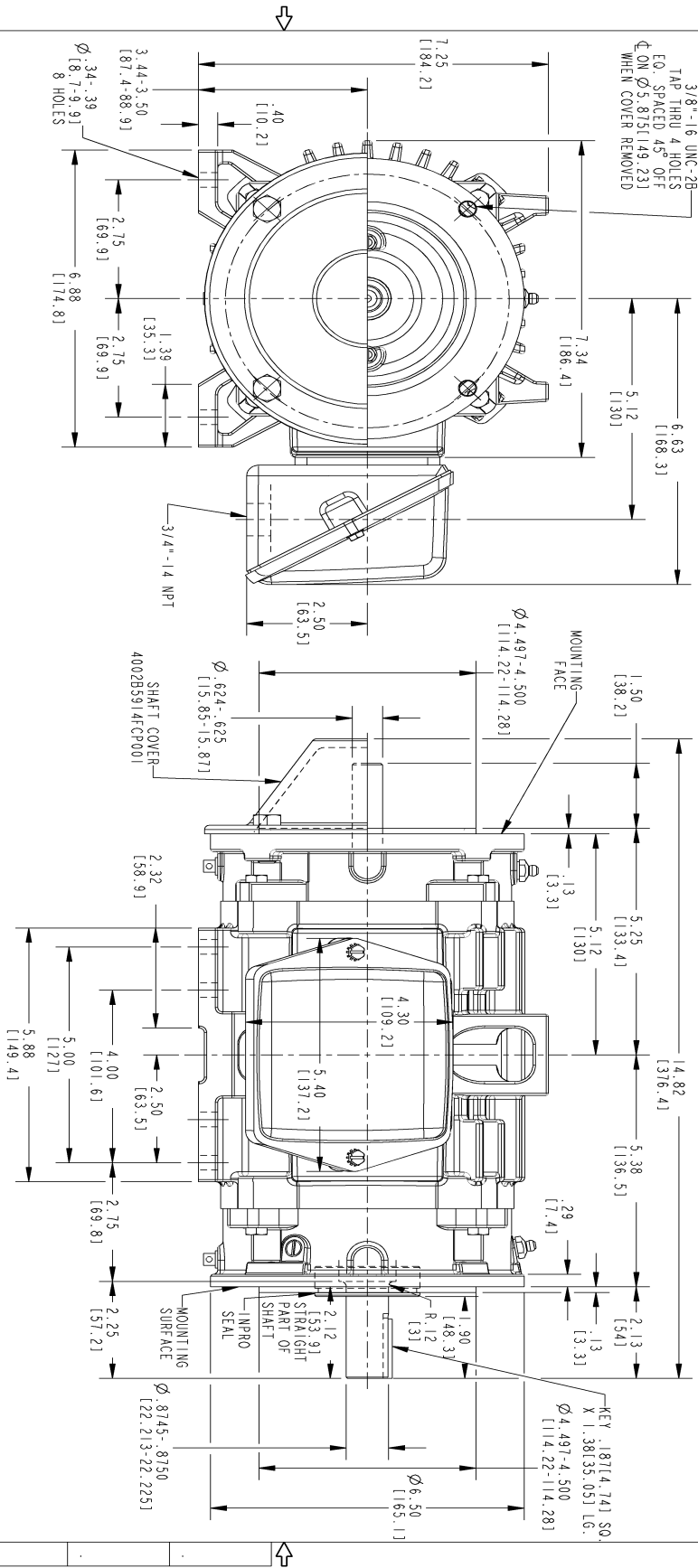
This motor is capable of two cold or one hot start with a maximum connected load inertia of 90 Lb-Ft Sq (3.79 Kg-meter Sq) at 100% voltage, where the load torque varies with the square of the speed. Acceleration time with maximum inertia and the above load type is 28 seconds. Safe stall time at 100% voltage is 67 seconds cold, 41 seconds hot. Rotor inertia is 0.1 Lb-Ft Sq (0 Kg-meter Sq).

Open Circuit A-C:	0.115	Short Circuit D-C:	0.004
Short Circuit A-C:	0.005	X/R Ratio:	1.652
Stator Slots:	36	Rotor Slots:	48

Speed Torque Current Curve (First Connection, First Speed)



Marks:



THIRD ANGLE PROJECTION

- NOTE 1: CONDUIT BOX MAY BE ASSEMBLED WITH ENTRANCE UP, DOWN OR TO EITHER SIDE.
- NOTE 2: E1 ASSEMBLY AS SHOWN, E2 ASSEMBLY CONDUIT BOX ON OPPOSITE SIDE FROM SHOWN LOCATION.
- NOTE 3: MOUNTING SURFACES WILL BE SQUARE AND CONCENTRIC WITH SHAFT WITHIN .004 T. I. R.
- NOTE 4: SHAFT RUNOUT WILL NOT EXCEED .002 T. I. R.

SIZE: DRAWING NO. 4002B5814SBP5283

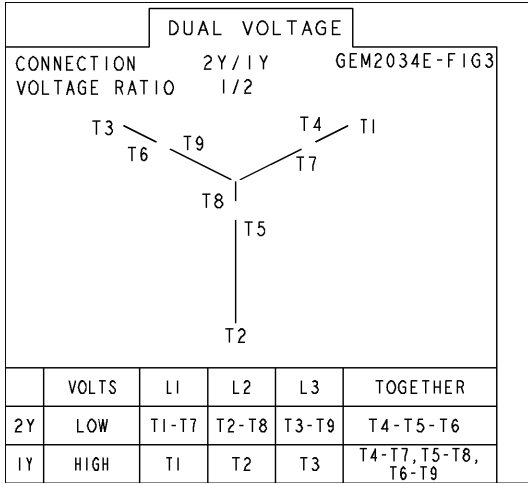
REV.	DESCRIPTION	DATE	APPROVED
1	DRW IS ACTIVE & NO LONGER OBSOLETE. DUAL DIMENSIONS ADDED	03/15/07	DAYAKAR
2	ISAC#15-0328	04/24/15	NAVATHA

SIGNATURES	DATE	GE Industrial Systems	GENERAL ELECTRIC COMPANY
DRWN: MALLIK 03/31/03			Fort Wayne, Indiana
DESGD: SHIVA 03/31/03			
ENGR: MALLIK 03/31/03			
ISSRD: MALLIK 03/31/03			
APPLIED PRACTICES			
SIZE: DRAWING	B	4002B5814SBP5283	REV. 2
SCALE: 0.450	REF. NO.:		

DISTRIBUTION: PMP-18K15

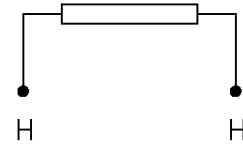
Marks:

Connection Diagram
GEM2034E-FIG3



Thermostat Connection
3027JE-1

FIG. 1
HEATER CONN.



CONTROL	L1	L2
VOLTAGE ONLY	H	H

End shield Assembly		
Part Description	DE Side Part#	ODE Side Part#
End Shield	4004D5289PB1	4004D5290PB1
Bearing		
Slinger/Inproseal		

Fan & Fan Cover Assembly	
Part Description	Part#
Fan	
Fan Cover	

Conduit & Accessories Box Assembly	
Part Description	Part#
Conduit Box	4002B5718PA-G01

Mechanical Accessories	
Part Description	Part#
Brake	
Tachometer	