

# Product Information Packet

January 13, 2017

Data shown is for the current revision model #. Ensure your nameplate model # matches.

<b>Model Number:</b>	<b>5KS213SAE5029A</b>
<b>Catalog Number:</b>	<b>V898</b>
<b>Instruction Manual:</b>	GEK-95351
<b>Connection Diagram:</b>	GEM2034E-FIG3
<b>Outline Drawing:</b>	4002B5821PMP5323

Accessory Connection Diagrams			
<b>Bearing Thermocouple:</b>	None	<b>Heater:</b>	3027JE-1
<b>RTD:</b>	None	<b>Thermistor:</b>	None
<b>Thermostat:</b>	None	<b>Winding Thermocouple:</b>	None
<b>Bearing RTD:</b>	None		

Table of Contents	
Specification	01
Performance Characteristics	02
Outline Drawing	03
Connection Drawing(s)	04

**Marks:**

<b>MODEL NUMBER:</b>	<b>5KS213SAE5029A</b>	<b>Estimated Weight:</b>	200 Lbs
<b>Outline Drawing:</b>	4002B5821PMP5323	<b>Time Rating:</b>	CONT
<b>Connection Diagram:</b>	GEM2034E-FIG3	<b>Enclosure:</b>	TEFC
<b>Instruction Book:</b>	GEK-95351	<b>Encl Construction:</b>	SD
<b>Design Code:</b>	21BD0114A	<b>Ambient Max(°C):</b>	40
<b>Type:</b>	KS	<b>Alt Ambient Max(°C):</b>	65
<b>Frame:</b>	L213TP10	<b>Insulation Class:</b>	H
<b>Phases:</b>	3	<b>NEMA Design:</b>	B
<b>Poles:</b>	2	<b>Nominal Efficiency:</b>	88.5 %
<b>Output Power:</b>	5HP 3.7KW	<b>Guaranteed Efficiency:</b>	86.5
<b>RPM:</b>	3540	<b>3/4 Load Efficiency:</b>	89.5
<b>Voltage:</b>	230/460	<b>KVA Code:</b>	J
<b>Hertz:</b>	60	<b>Max KVAR:</b>	1.3
<b>Amps - FL:</b>	12.0/6.0	<b>Power Factor:</b>	88.5
<b>Service Factor:</b>	1.15	<b>Bearing - DE:</b>	7308
<b>Alt Service Factor:</b>	1.00	<b>Bearing - ODE:</b>	6208-2ZC3

**Enclosure is Totally Enclosed Fan-Cooled**

**Stamped Nameplate Notes:**

PREMIUM EFFICIENT MOTOR  
 ROT CCW FACING ODE LEAD/PH SEQUENCE 1-2-3/1-2-3  
 HTR LDS H 115V 60W  
 SEVERE DUTY  
 INVERTER DUTY PER NEMA MG1 PART 31  
 ALTERNATE RATING FOR PWM CONTROL:  
 1.0 SF VAR TORQUE RANGE 10-60 HZ  
 50HZ DATA:3 HP 190/380 V WITH FLA-9.0/4.5 A

**Additional Information:**

2P - TP EXTN  
 C/BOX 55 CU IN-1.00 NPT  
 HEATER LEADS EXIT WITH MOTOR LEADS  
 E/SHLD GROUND STUD MTD ON DE C/BOX SIDE  
 RCF 5000 CPM, STATIC DEFLECTION .0014 INCHES &  
 CENTER OF GRAVITY 8.59 INCHES  
 HOLLOW SHAFT HIGH THRUST  
 LEADS NUMBERED 1,2,3 - CCW ROTN FROM ODE  
 OIL RESISTANT SLEEVING ON LEADS  
 BEARING LIFE 8760 HOURS AT 1663 LB THRUST  
 COUPLING NOT INCLUDED IN BOM, WILL BE  
 ORDERED SEPERATELY

**Performance Characteristics**

1st Winding 1st Connection

**Design: 21BD0114A**

**Marks:**

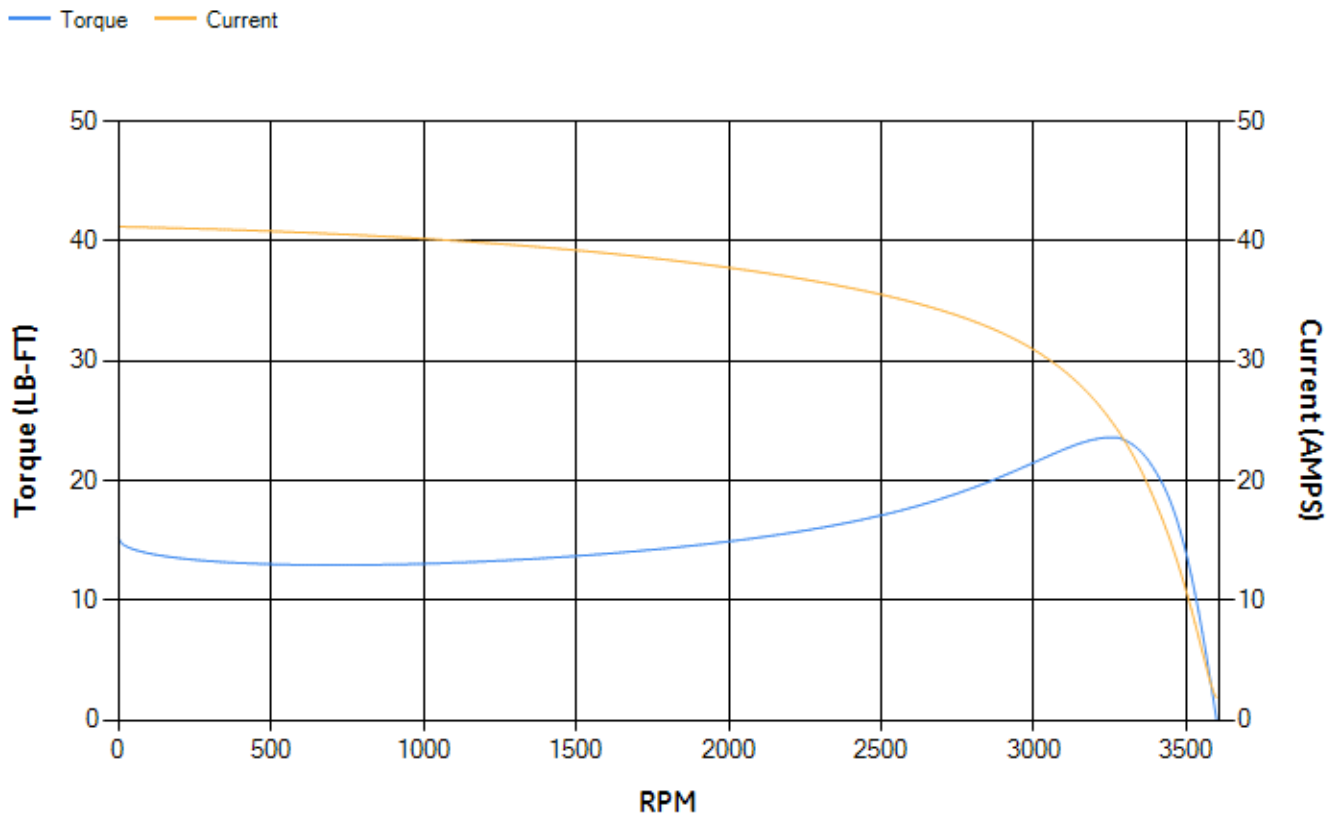
LOAD %	125.0	115.0	100.0	75.0	50.0	25.0	0.0
% EFF	89.05	89.35	89.84	89.53	87.96	81.48	0.00
% PF	89.73	89.45	88.66	85.76	78.62	59.68	12.83
AMPS	7.32	6.73	5.87	4.57	3.38	2.41	1.85

TORQ(FL)#FT	7.41	TORQ(LR)%FL	204.91	TORQ(BD)%FL	316.58
AMPS(LR)	41.2	PF AT START	0.35		

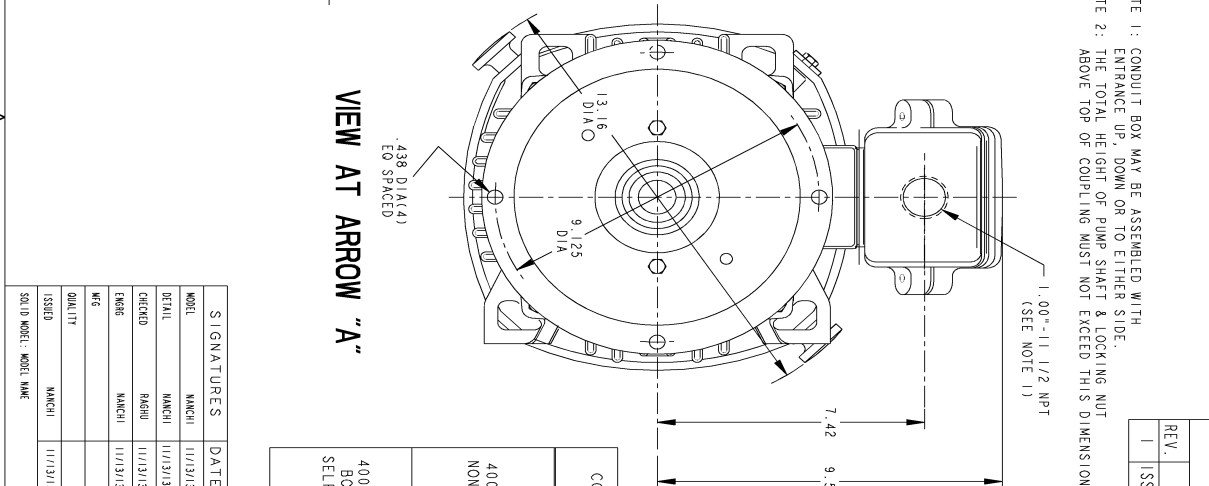
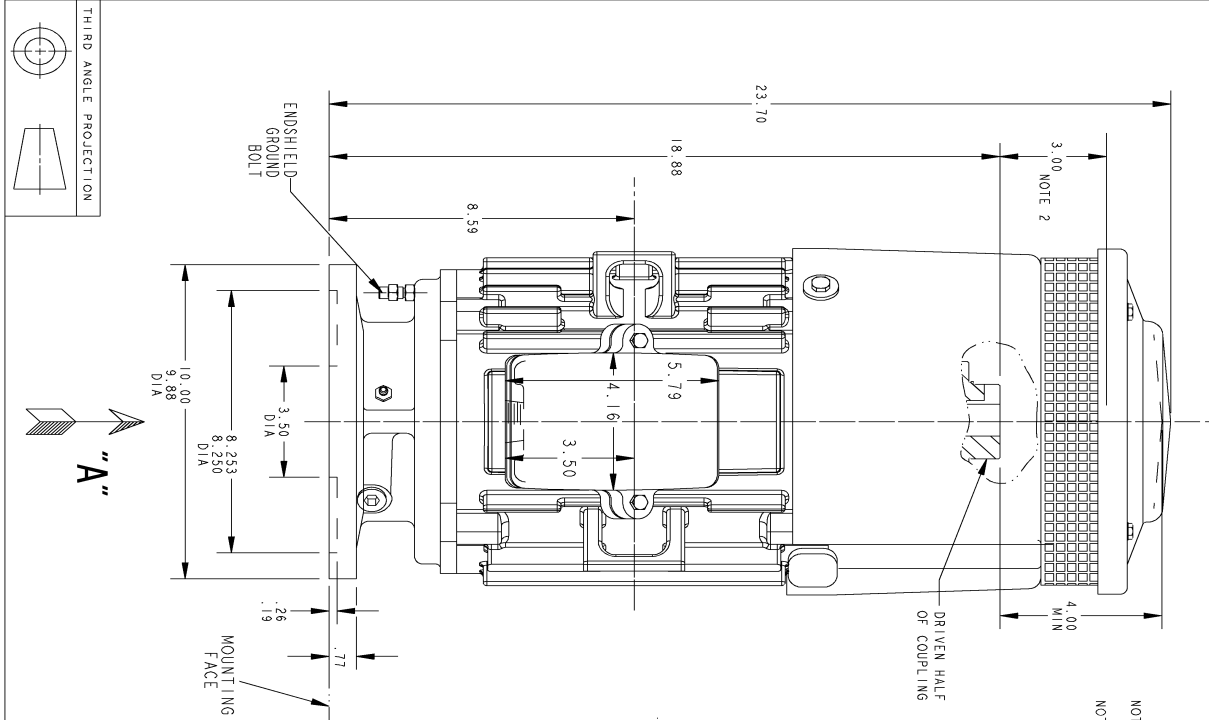
This motor is capable of two cold or one hot start with a maximum connected load inertia of 79 Lb-Ft Sq (3.33 Kg-meter Sq)at 100% voltage, where the load torque varies with the square of the speed. Acceleration time with maximum inertia and the above load type is 70 seconds. Safe stall time at 100% voltage is 119 seconds cold, 101 seconds hot. Rotor inertia is 0.31 Lb-Ft Sq (0.01 Kg-meter Sq).

Open Circuit A-C:	0.524	Short Circuit D-C:	0.011
Short Circuit A-C:	0.021	X/R Ratio:	4.194
Stator Slots:	36	Rotor Slots:	26

**Speed Torque Current Curve (First Connection, First Speed)**



Marks:



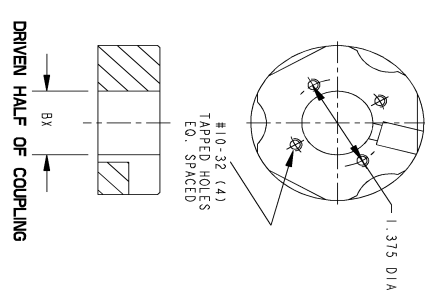
NOTE 1: CONDUIT BOX MAY BE ASSEMBLED WITH ENTRANCE UP, DOWN OR TO EITHER SIDE.  
 NOTE 2: THE TOTAL HEIGHT OF PUMP SHAFT & LOCKING NUT ABOVE TOP OF COUPLING MUST NOT EXCEED THIS DIMENSION.

REV.	DESCRIPTION	DATE	APPROVED
1	ISSAC #14-0928	11/14/14	VJAYAT

SIZE DRAWING NO. **4002B5821PMP5323** REV. SHEET 1

REVISIONS

COUPLING KIT	POLES	BORE DIA. "BX"	KEYWAY	
			"W"	"D"
4002B5521AC NON-REVERSE	1, 2, 3, 4, 6, 7, 8	1.002, 1.001, .939, .877, .752, .751, .938, .877, .876	.250, .188, .094	.125
4002B5521AD BOLTED OR SELF-RELEASE	1, 2, 3, 4, 6, 7, 8	1.002, 1.001, .938, .877, .876, .752, .751	.250, .188, .094	.125



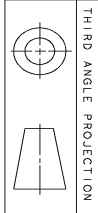
**GE Motors** GENERAL ELECTRIC COMPANY

SIGNATURES DATE

MODEL	MANCHEL	11/13/13
DETAIL	MANCHEL	11/13/13
CHECKED	MANCHEL	11/13/13
ENGR	MANCHEL	11/13/13
QC		
ISSUED	MANCHEL	11/13/13
SOLD MODEL	MODEL NAME	

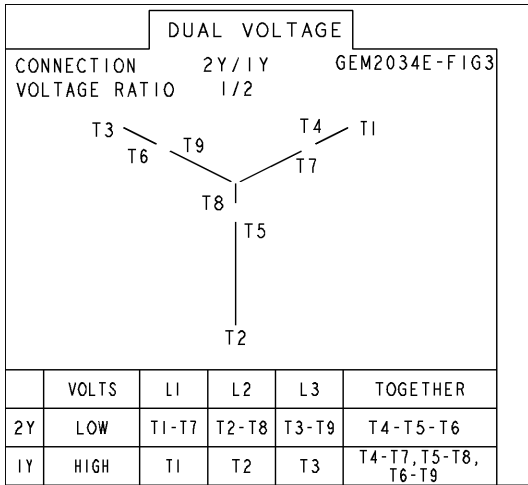
TITLE **INDUCTION MOTOR OUTLINE**  
 HOLLOW SHAFT-HIGH THRUST (BD-10) EKT ON DE SIDE  
 FWF: FR210 TFC "P" BASE VERTICAL  
**4002B5821PMP5323**

SCALE: DRAWING SCALE



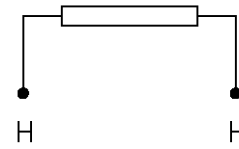
Marks:

**Connection Diagram**  
**GEM2034E-FIG3**



**Heater Connection**  
**3027JE-1**

FIG. 1  
HEATER CONN.



CONTROL	L1	L2
VOLTAGE ONLY	H	H