

Product Information Packet

November 8, 2016

Data shown is for the current revision model #. Ensure your nameplate model # matches.

Model Number:	5KS444LAA239A
Catalog Number:	M7695
Instruction Manual:	GEI-56128
Connection Diagram:	GEM2034E-FIG7
Outline Drawing:	239CC600AA

Accessory Connection Diagrams			
Bearing Thermocouple:	None	Heater:	None
RTD:	None	Thermistor:	None
Thermostat:	None	Winding Thermocouple:	None
Bearing RTD:	None		

Table of Contents	
Specification	01
Performance Characteristics	02
Outline Drawing	03
Connection Drawing(s)	04



Marks:

MODEL NUMBER:	5KS444LAA239A	Estimated Weight:	1780 Lbs
Outline Drawing:	239CC600AA	Time Rating:	CONT
Connection Diagram:	GEM2034E-FIG7	Enclosure:	TEFC
Instruction Book:	GEI-56128	Encl Construction:	SD
Design Code:	44BD1083A	Ambient Max(°C):	40
Type:	KS	Alt Ambient Max(°C):	--
Frame:	444T	Insulation Class:	F
Phases:	3	NEMA Design:	A
Poles:	4	Nominal Efficiency:	95.4 %
Output Power:	125HP 92.5KW	Guaranteed Efficiency:	94.5
RPM:	1785	3/4 Load Efficiency:	95.5
Voltage:	460	KVA Code:	G
Hertz:	60	Max KVAR:	44.9
Amps - FL:	148.0	Power Factor:	83.0
Service Factor:	1.15	Bearing - DE:	NU 318
Alt Service Factor:	--	Bearing - ODE:	6318ZC3S0

Enclosure is Totally Enclosed Fan-Cooled

Stamped Nameplate Notes:

ROLLER BEARING - FOR BELTED LOAD ONLY
 INVERTER DUTY PER NEMA MG1 PART 31
 ALTERNATE RATING FOR PWM CONTROL:
 1.0 SF VAR TORQUE RANGE 0-60 HZ

Additional Information:

4P - T EXTN
 700 CU IN - 3.00" NPT
 OIL RESISTANT SLEEVING ON LEADS
 B5F4C4 HIGH FATIGUE STEEL AISI 4142 SHAFT MATERIAL
 F1 MOUNTING
 VIBRATION LIMIT 0.0016 INCH PEAK TO PEAK

Performance Characteristics

1st Winding 1st Connection

Design: 44BD1083A

Marks:

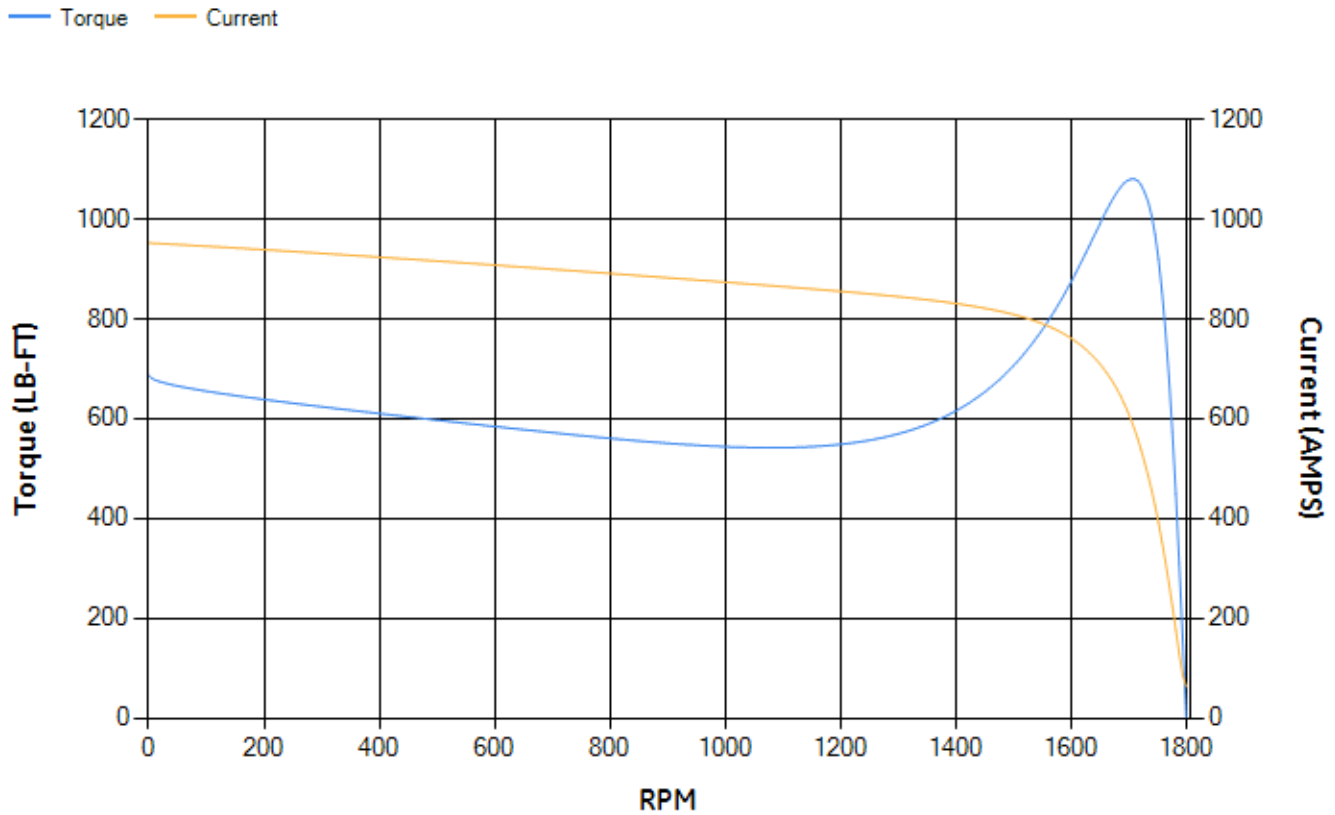
LOAD %	125.0	115.0	100.0	75.0	50.0	25.0	0.0
% EFF	95.05	95.23	95.63	95.54	95.06	92.44	0.00
% PF	85.18	84.47	82.86	77.86	67.18	44.26	3.28
AMPS	180.62	167.26	147.65	117.95	91.6	71.48	62.47

TORQ(FL)#FT	367.97	TORQ(LR)%FL	186.71	TORQ(BD)%FL	293.15
AMPS(LR)	952.24	PF AT START	0.31		

This motor is capable of two cold or one hot start with a maximum connected load inertia of 1810 Lb-Ft Sq (76.2 Kg-meter Sq)at 100% voltage, where the load torque varies with the square of the speed. Acceleration time with maximum inertia and the above load type is 21 seconds. Safe stall time at 100% voltage is 52 seconds cold, 25 seconds hot. Rotor inertia is 44.5 Lb-Ft Sq (1.87 Kg-meter Sq).

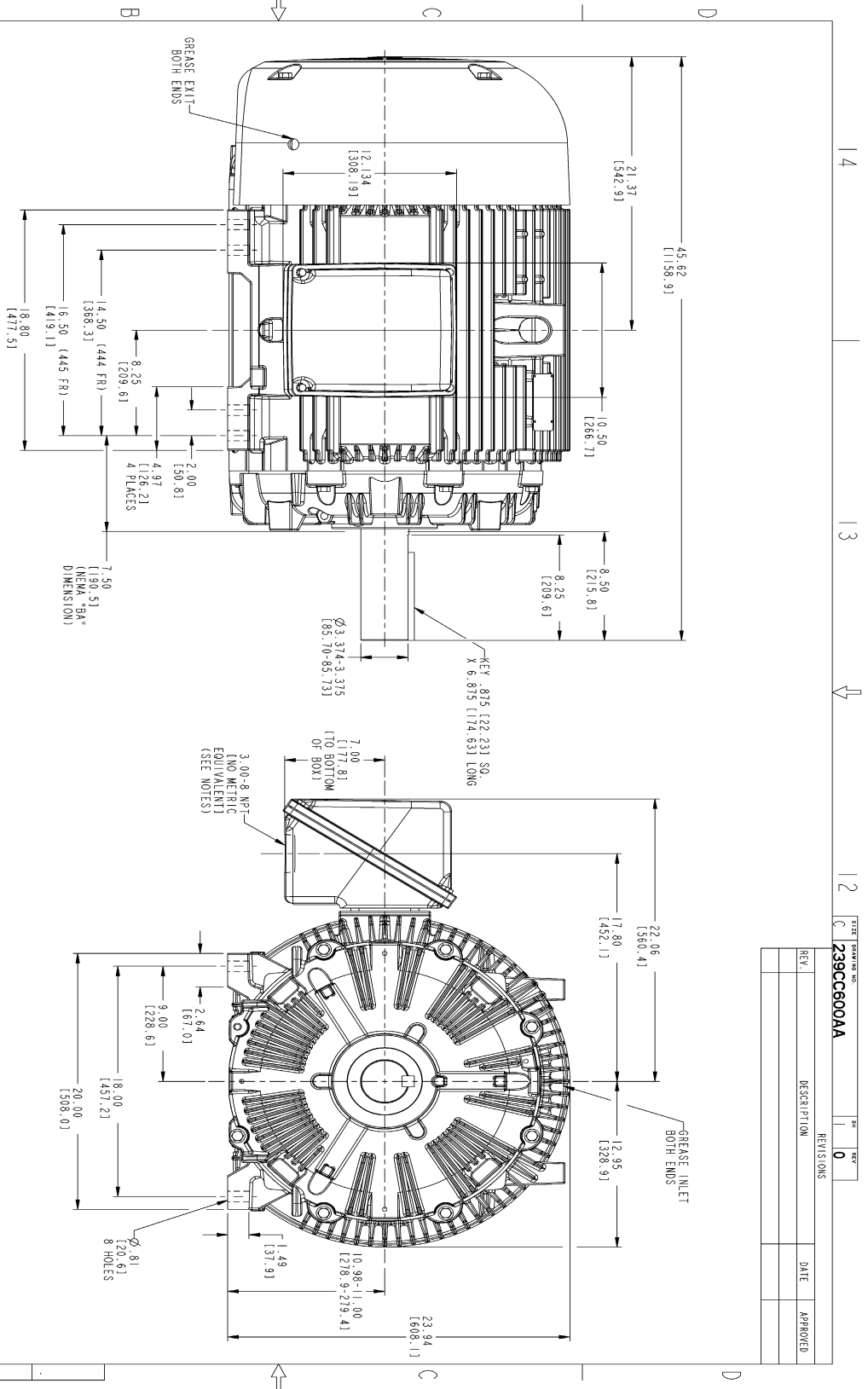
Open Circuit A-C:	0.636	Short Circuit D-C:	0.027
Short Circuit A-C:	0.038	X/R Ratio:	10.325
Stator Slots:	72	Rotor Slots:	58

Speed Torque Current Curve (First Connection, First Speed)

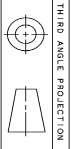


NAME:501352727 OBJECT:239CC600AA DATE:31-Jul-07 13:50:49

Marks:



- NOTES:
1. CONDUIT BOX MAY BE PLACED WITH THE ENTRANCE DOWN, UP OR ON EITHER I
 2. F-1 ASSEMBLY AS SHOWN.
 3. F-2 ASSEMBLY CONDUIT BOX ON OPPOSITE SIDE.
 4. BRACKETED DIMENSIONS ARE METRIC (MILLIMETERS).



REV.	DESCRIPTION	DATE	APPROVED

SIGNATURES	DATE	GE Industrial Systems	GENERAL ELECTRIC COMPANY
DESIGNED: SOUTER	01/21/07		Fort Wayne, Indiana
CHECKED: SALAN	01/21/07		
ISSUED: SOUTER	01/21/07		
APPLIED PRACTICES:			
SIZING DIMENSIONS			
C			
SCALE: 0.200 REF. NO:			
700 CU. IN. CONDUIT BOX			
444/445 T TEFC ESP			
239CC600AA			
SHEET 1 OF 1			
DISTRIBUTION: MMP			

Marks:

Connection Diagram
GEM2034E-FIG7

