

Product Information Packet

May 25, 2017

Data shown is for the current revision model #. Ensure your nameplate model # matches.

Model Number:	5KS213SAE5028B
Catalog Number:	V900
Instruction Manual:	GEK-95351
Connection Diagram:	GEM2034E-FIG3
Outline Drawing:	4002B5821PMP5323

Accessory Connection Diagrams			
Bearing Thermocouple:	None	Heater:	3027JE-1C
RTD:	None	Thermistor:	None
Thermostat:	None	Winding Thermocouple:	None
Bearing RTD:	None		

Table of Contents

Specification	01
Performance Characteristics	02
Outline Drawing	03
Connection Drawing(s)	04
Spare parts	05



Marks:

MODEL NUMBER:	5KS213SAE5028B	Estimated Weight:	200 Lbs
Outline Drawing:	4002B5821PMP5323	Time Rating:	CONT
Connection Diagram:	GEM2034E-FIG3	Enclosure:	TEFC
Instruction Book:	GEK-95351	Encl Construction:	SD
Design Code:	21BD0074AA	Ambient Max(°C):	40
Type:	KS	Alt Ambient Max(°C):	65
Frame:	L213TP10	Insulation Class:	H
Phases:	3	NEMA Design:	B
Poles:	2	Nominal Efficiency:	89.5 %
Output Power:	7.5HP 5.6KW	Guaranteed Efficiency:	87.5
RPM:	3530	3/4 Load Efficiency:	--
Voltage:	230/460	KVA Code:	H
Hertz:	60	Max KVAR:	2.1
Amps - FL:	18.0/9.0	Power Factor:	87.5
Service Factor:	1.15	Bearing - DE:	7308
Alt Service Factor:	1.0	Bearing - ODE:	6208-2ZC3

Enclosure is Totally Enclosed Fan-Cooled

Stamped Nameplate Notes:

PREMIUM EFFICIENT MOTOR
 ROT CCW FACING ODE LEAD/PH SEQUENCE 1-2-3/1-2-3
 HTR LDS HE1-HE2 115V 60W
 SEVERE DUTY
 INVERTER DUTY PER NEMA MG1 PART 31
 ALTERNATE RATING FOR PWM CONTROL:
 1.0 SF VAR TORQUE RANGE 10-60 HZ
 50HZ DATA: 5HP 190/380 V WITH FLA-14.8/7.4 A

Additional Information:

2P - TP EXTN
 C/BOX 55 CU IN-1.00 NPT
 HEATER LEADS EXIT WITH MOTOR LEADS
 E/SHLD GROUND STUD MTD ON DE C/BOX SIDE
 RCF 5000 CPM, STATIC DEFLECTION .0014 INCHES &
 CENTER OF GRAVITY 8.59 INCHES
 HOLLOW SHAFT HIGH THRUST
 OIL RESISTANT SLEEVING ON LEADS
 BEARING LIFE 8760 HOURS AT 1663 LB THRUST
 COUPLING NOT INCLUDED IN BOM, WILL BE
 ORDERED SEPERATELY

Performance Characteristics

1st Winding 1st Connection

Design: 21BD0074AA

Marks:

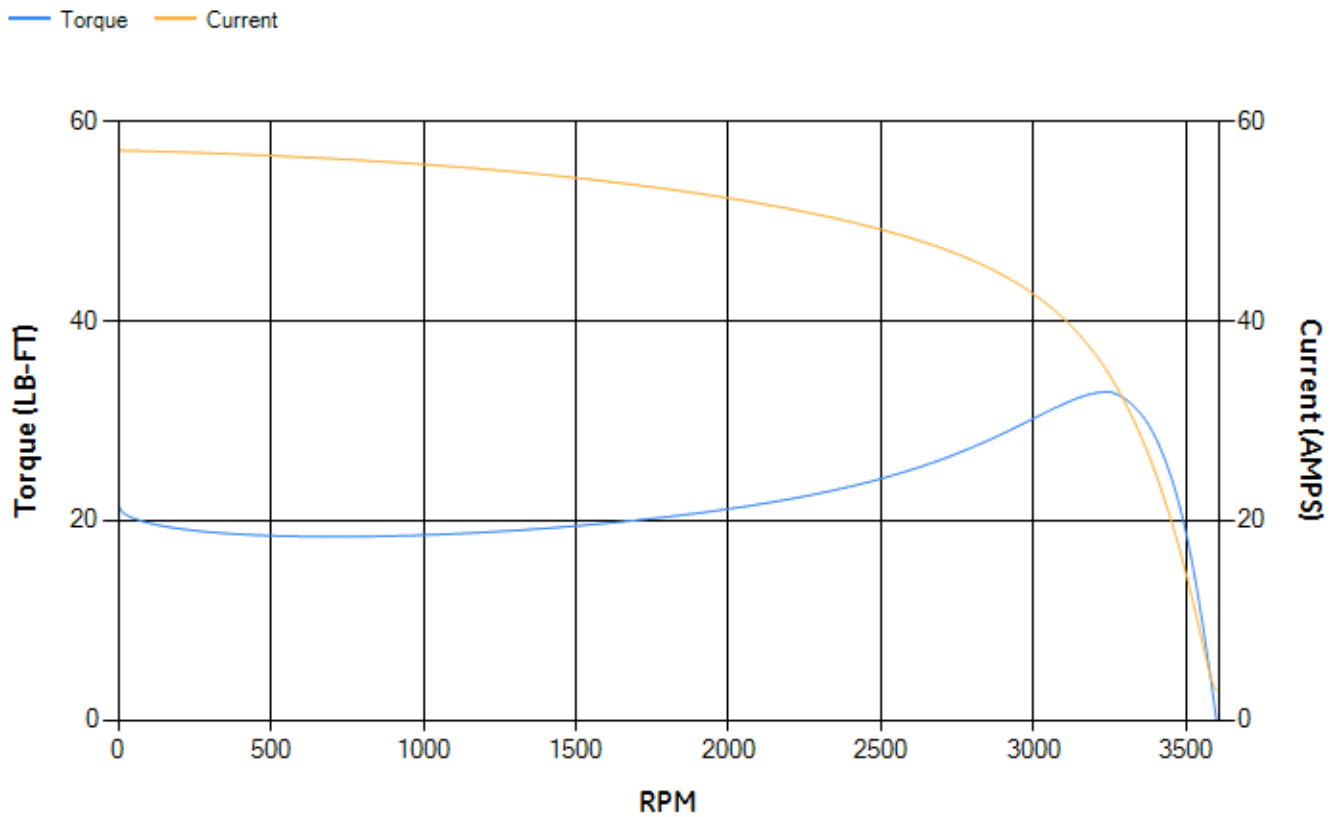
LOAD %	125.0	115.0	100.0	75.0	50.0	25.0	0.0
% EFF	88.42	88.94	89.78	90.1	89.36	84.45	0.00
% PF	88.62	88.37	87.57	84.47	76.7	56.43	9.41
AMPS	11.2	10.27	8.92	6.92	5.12	3.68	2.93

TORQ(FL)#FT	11.16	TORQ(LR)%FL	192.83	TORQ(BD)%FL	292.52
AMPS(LR)	57.09	PF AT START	0.36		

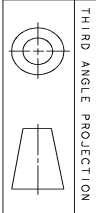
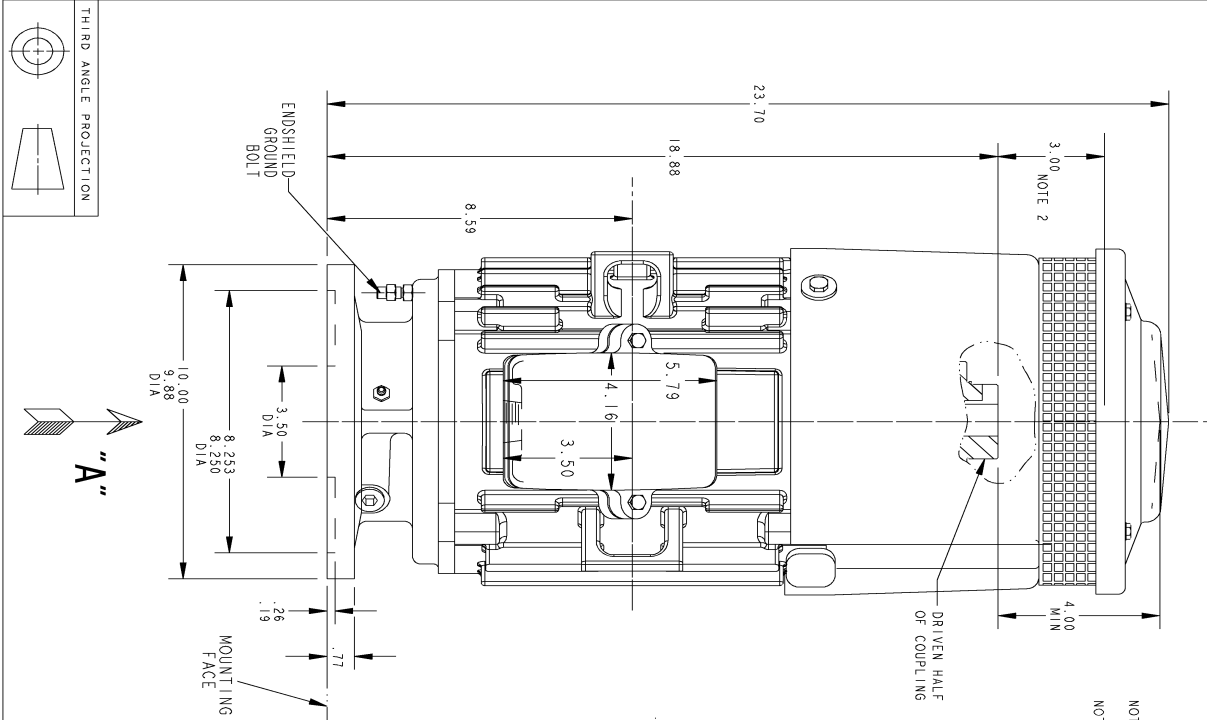
This motor is capable of two cold or one hot start with a maximum connected load inertia of 78 Lb-Ft Sq (3.28 Kg-meter Sq)at 100% voltage, where the load torque varies with the square of the speed. Acceleration time with maximum inertia and the above load type is 49 seconds. Safe stall time at 100% voltage is 85 seconds cold, 59 seconds hot. Rotor inertia is 0.31 Lb-Ft Sq (0.01 Kg-meter Sq).

Open Circuit A-C:	0.406	Short Circuit D-C:	0.01
Short Circuit A-C:	0.018	X/R Ratio:	3.858
Stator Slots:	36	Rotor Slots:	26

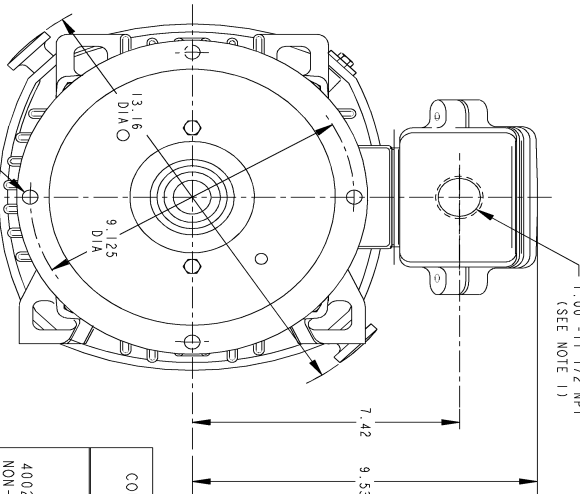
Speed Torque Current Curve (First Connection, First Speed)



Marks:



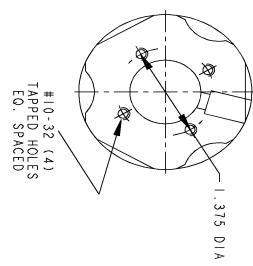
NOTE 1: CONDUIT BOX MAY BE ASSEMBLED WITH ENTRANCE UP, DOWN OR TO EITHER SIDE.
 NOTE 2: THE TOTAL HEIGHT OF PUMP SHAFT & LOCKING NUT ABOVE TOP OF COUPLING MUST NOT EXCEED THIS DIMENSION.



VIEW AT ARROW "A"

COUPLING KIT	POLES	BORE DIA. "BX"	KEYWAY	
			"W"	"D"
4002B5521AC NON-REVERSE	1, 2, 3, 4, 6, 7, 8, 9	1.002, 1.001, .939, .877, .876, .752, .751, .938, .877, .876, .752, .751	.250, .188, .094	.125, .094
4002B5521AD BOLTED OR SELF-RELEASE	2, 3, 4, 6, 7, 8, 9	.938, .877, .876, .752, .751	.250, .188, .094	.125, .094

DRIVEN HALF OF COUPLING



SIZE DRAWING NO. **4002B5821PMP5323**

REV.	DESCRIPTION	DATE	APPROVED
1	ISSAC #14-0928	11/14/14	VJAT

GE Motors GENERAL ELECTRIC COMPANY

SIGNATURES

MODEL	MANCHEL	DATE	11/13/13
DETAIL	MANCHEL	11/13/13	
CHECKED	MANCHEL	11/13/13	
ENG	MANCHEL	11/13/13	
ISSUED	MANCHEL	11/13/13	

TITLE
 INDUCTION MOTOR OUTLINE
 HOLLOW SHAFT-HIGH THRUST (BD-10) EKT ON DE SIDE
 FWF: FR210 TFC "P" BASE VERTICAL

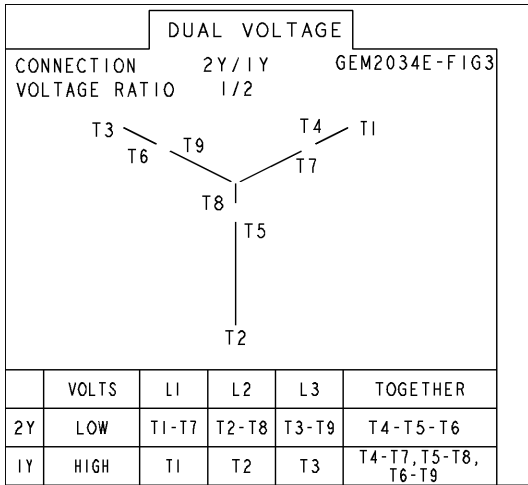
SIZE DRAWING
 4002B5821PMP5323

SCALE: DRAWING SCALE

SHEET 1 OF 1

Marks:

Connection Diagram
GEM2034E-FIG3



Heater Connection
3027JE-1C



End shield Assembly		
Part Description	DE Side Part#	ODE Side Part#
End Shield	128D6027PA1	128D6028PA1
Bearing	235A2503EJ01	235A2503AA01
Slinger/Inproseal	235A2300FL1	

Fan & Fan Cover Assembly	
Part Description	Part#
Fan	
Fan Cover	4003C5521AC-G01

Conduit & Accessories Box Assembly	
Part Description	Part#
Conduit Box	4002B5721PA-G01

Mechanical Accessories	
Part Description	Part#
Brake	
Tachometer	