

Product Information Packet

November 7, 2016

Data shown is for the current revision model #. Ensure your nameplate model # matches.

Model Number:	5CD183SA043B052
Catalog Number:	D548
Instruction Manual:	GEH-3967N
Connection Diagram:	36A167760CB501
Outline Drawing:	36A167935AA002

Accessory Connection Diagrams			
Bearing Thermocouple:	None	Heater:	None
RTD:	None	Thermistor:	None
Thermostat:	None	Winding Thermocouple:	None
Bearing RTD:	None		

Table of Contents	
Specification	01
Outline Drawing	02
Connection Drawing(s)	03

Marks:

MODEL NUMBER:	5CD183SA043B052	Enclosure Mtg Assem:	36A167770AC001
Outline Drawing:	36A167935AA002	Instruction Book:	GEH-3967N
Connection Diagram:	36A167760CB501	RPM:	1750/2100
Horsepower:	40	Armature Amps:	67
Armature Volts:	500	Type:	CD327AT
Wound:	SHUNT	Power Supply Code:	D
Enclosure:	DPFG-SV	Insulation Class:	F
Duty:	CONT	Ambient Max (°C):	40 C
Rating Code:	183S1340-01	Field Volts:	300/150
K(V):	2.49 Cemf volts/Radian/Sec	WK2:	8.45Lb Ft2
K(T):	1.79 Ft/Amp	Year of Manufacture:	2016
Minimum Ambient:	0 C	Max Altitude:	3300 Ft

Resistances at 25 Degrees C :

Shunt Field:	107 OHMS
Armature:	.297 OHMS
Commutator Field:	.0824 OHMS

Inductances:

Armature Circuit Total:	9.470 mH Saturated
Shunt Field:	116.0 Henries Unsaturated

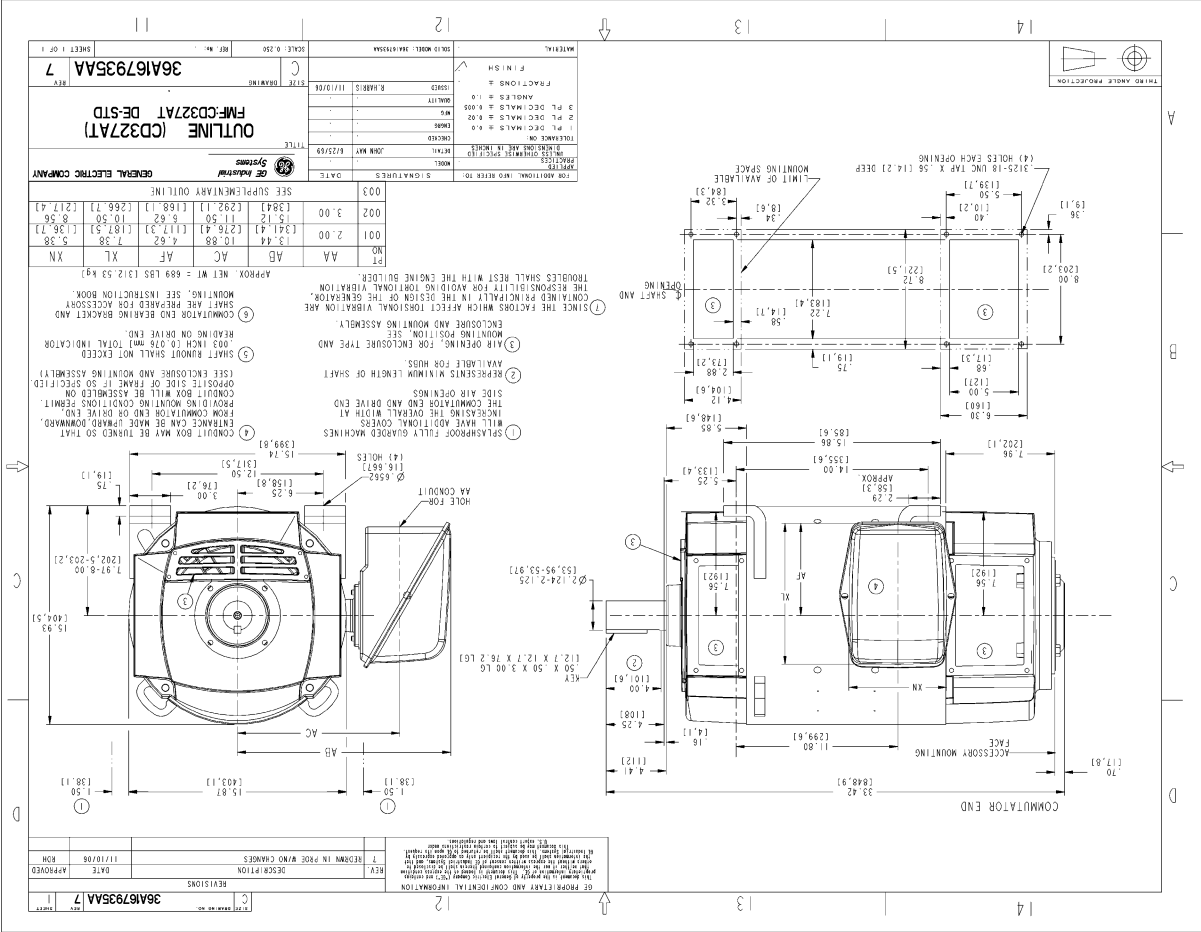
Shunt Field Data:

Shunt Field Current(1): 2.03 AMPS at Rated Load and 1750 RPM
 Shunt Field Current(2): 1.72 AMPS at Rated Load and 1867 RPM
 Shunt Field Current(3): 1.32 AMPS at Rated Load and 2100 RPM

Additional Machine Notes:

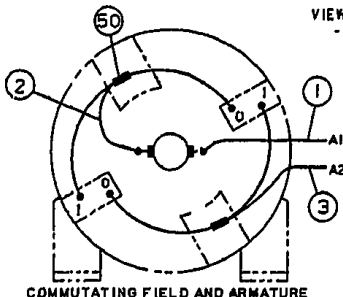
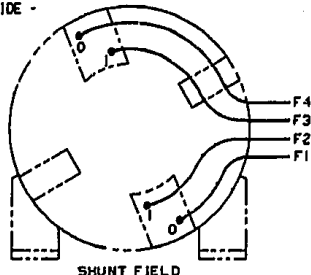
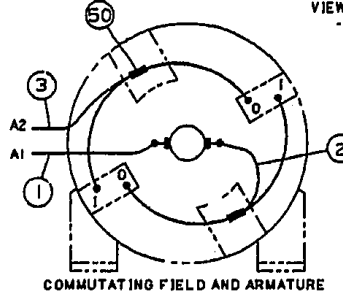
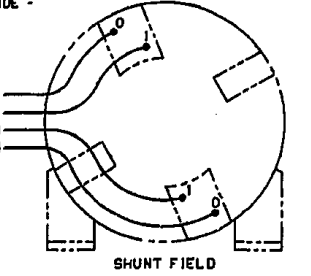
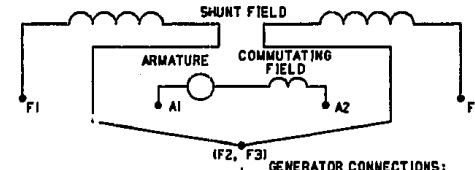
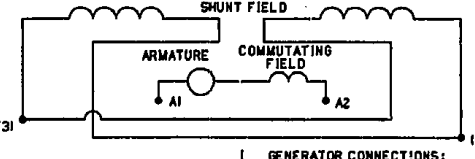
DRIPPROOF FULLY GUARDED, SEPARATELY VENTILATED
 - BALL BEARINGS
 CONDUIT BOX ON RIGHT HAND SIDE FACING COMMUTATOR END
 STANDARD SHAFT DRIVE END ONLY - WITH FEET
 SEPARATELY VENTILATED AT 420 CFM
 PRESSURE DROP AT .82 INCHES OF WATER
 WITH:
 CSA STAMP
 THERMOSTAT- NORMALLY CLOSED, AC RATING- 600V MAX-
 .5A, 250V-1.5A, OR 125V-3A, DC RATING- 30V MAX-
 1.5A.MAXIMUM CURRENT BASED ON INDUCTIVE LOADS UP
 TO AND INCLUDING NEMA NO.5 CONTACTOR.

Marks:



NAME: ZHONGSHAN OBJECT: 36A167935AA DATE: 13-NOV-06 09:18:28

Marks:

NO S.O.	GENERAL ELECTRIC	36A167760CB501	CONT ON SHEET SH NO.
REV 2	TITLE	36A167760CB501	
36A167760CB501	CONNECTION DIAGRAM		
CONT ON SHEET	SH NO.	FIRST MADE FOR	2 POLE
DIRECT CURRENT MOTOR AND GENERATOR - SHUNT WOUND 1 OR 2 CIRCUIT SHUNT FIELD - 2 CIRCUIT COMMUTATING FIELD			
VIEWS FACING COMMUTATOR END - LEADS OUT RIGHT SIDE -			
 <p style="text-align: center;">COMMUTATING FIELD AND ARMATURE</p>		 <p style="text-align: center;">SHUNT FIELD</p>	
VIEWS FACING COMMUTATOR END - LEADS OUT LEFT SIDE -			
 <p style="text-align: center;">COMMUTATING FIELD AND ARMATURE</p>		 <p style="text-align: center;">SHUNT FIELD</p>	
<p>ALL EXTERNAL LEADS ARE MARKED. ALL CONNECTIONS AND TERMINATIONS EXTERNAL TO MAGNET FRAME MUST BE INSULATED PER NATIONAL ELECTRICAL CODE AND SOUND LOCAL PRACTICES.</p> <p>SPACE HEATERS, WHEN SPECIFIED, WILL HAVE LEADS WITH TERMINAL MARKINGS H1 AND H2.</p> <p>THERMOSTAT, WHEN SPECIFIED, WILL HAVE LEADS WITH TERMINAL MARKINGS P1 AND P2.</p> <p>ENCIRCLED NUMBERS MAY BE USED FOR PART IDENTIFICATION.</p>			
<p>FOR HIGH NAMEPLATE EXCITATION VOLTAGE CONNECT SHUNT FIELD LEADS AS INDICATED</p> <div style="display: flex; justify-content: space-around; align-items: center;">  </div>			
<p>MOTOR CONNECTIONS: FOR CCW ROTATION FACING COMMUTATOR END, MAKE LEADS F1 AND A1 THE SAME POLARITY. FOR CW ROTATION FACING COMMUTATOR END, MAKE LEADS F1 AND A2 THE SAME POLARITY.</p>		<p>GENERATOR CONNECTIONS: FOR CW ROTATION FACING COMMUTATOR END, F1 POSITIVE WILL MAKE A2 POSITIVE. FOR CCW ROTATION FACING COMMUTATOR END, F1 POSITIVE WILL MAKE A1 POSITIVE.</p>	
<p>FOR LOW NAMEPLATE EXCITATION VOLTAGE CONNECT SHUNT FIELD LEADS AS INDICATED</p> <div style="display: flex; justify-content: space-around; align-items: center;">  </div>			
<p>MOTOR CONNECTIONS: FOR CCW ROTATION FACING COMMUTATOR END, MAKE LEADS (F1,F3) & A1 THE SAME POLARITY. FOR CW ROTATION FACING COMMUTATOR END, MAKE LEADS (F1,F3) & A2 THE SAME POLARITY.</p>		<p>GENERATOR CONNECTIONS: FOR CW ROTATION FACING COMMUTATOR END, (F1,F3) POSITIVE WILL MAKE A2 POSITIVE. FOR CCW ROTATION FACING COMMUTATOR END, (F1,F3) POSITIVE WILL MAKE A1 POSITIVE.</p>	
2	10-11-94 R.D.BOLLA	NO S.O. RETR	QC(1) CAD
MADE BY P.HARABEDIAN	3-19-69	FILE KC13-1	GE MOTORS ERIE
RE-ISSUED CAD/ R.D.BOLLA	10-11-94	DIV OR DEPT LOCATION	36A167760CB501 CONT ON SHEET SH NO.

C5X.A.36A167760CB501R02