

GENERAL INFORMATION:

SHAFT RUNOUT: .001 [.025] T.I.R. PER INCH LENGTH OF EXTENSION

BEARINGS: BALL

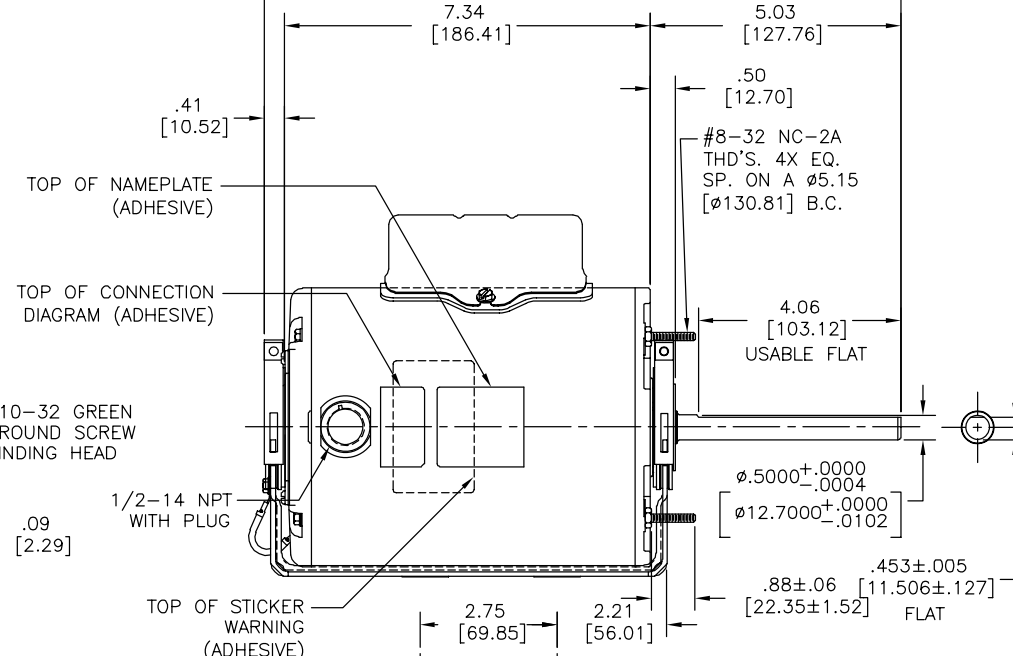
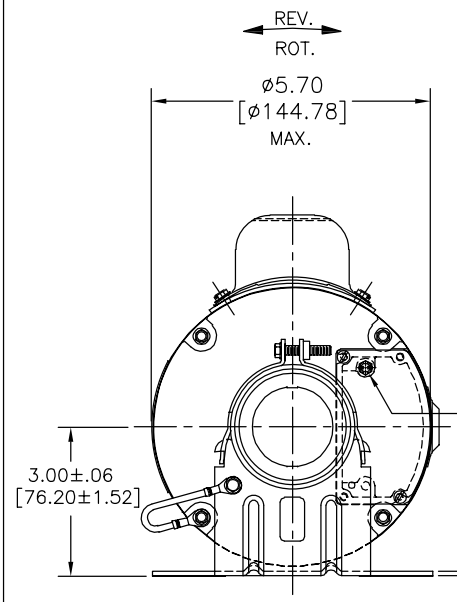
MOUNTING POSITION: ALL ANGLE

ELECTRICAL DATA:

OVERLOAD PROTECTOR: AUTOMATIC RESET (T.I. 7AM 036)

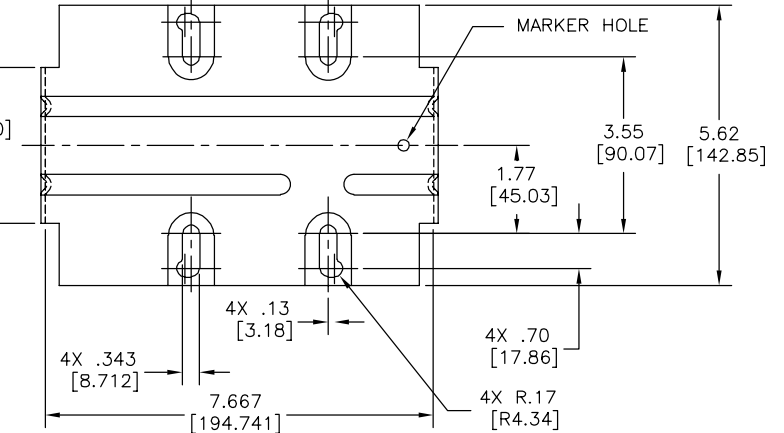
LEADS: NO. 18 GA., .03 [.76] THK. XLP 125°C INSUL.

GROUND LEAD: NO. 18 GA., .03 [.76] THK., GREEN/YELLOW INSUL.



- NOTES:
- SHIP SEPARATE 2503539-043 BAG ASSY.
  - MOTOR TO BE SHIPPED CONNECTED FOR CCWLE ROTATION AND 115 VOLTS.

GREEN/YELLOW (GROUND)	CONNECTED TO BASE	#10 EYELET
RED	CONNECTED TO CAPACITOR	.25 [6.35] FLAG
RED	CONNECTED TO CAPACITOR	.25 [6.35] FLAG
YELLOW	5.0/6.0 [127.0/152.4]	.25 [6.35] FLAG
BLACK	5.0/6.0 [127.0/152.4]	.25 [6.35] FLAG
ORANGE	5.0/6.0 [127.0/152.4]	.25 [6.35] FLAG
WHITE	5.0/6.0 [127.0/152.4]	.25 [6.35] FLAG
RED	5.0/6.0 [127.0/152.4]	.25 [6.35] FLAG
BROWN	5.0/6.0 [127.0/152.4]	.25 [6.35] FLAG
YELLOW/BLACK	5.0/6.0 [127.0/152.4]	.25 [6.35] FLAG
COLOR	LENGTH	TERMINAL OR STRIP LENGTH



REGAL-BELOIT CORPORATION (RBC) PROVIDES TECHNICAL ASSISTANCE TO OUR CUSTOMERS IN SEVERAL AREAS. SINCE RBC DOES NOT RECEIVE ALL DATA CONCERNING THE USE AND APPLICATION OF THE MOTOR, THE SUITABILITY OF THE MOTOR FOR THE APPLICATION MUST BE DETERMINED BY THE CUSTOMER.

DIMENSIONS WITHOUT TOLERANCES ARE FOR REFERENCE ONLY.

MAIN FRAME - OLE	ENCLOSED
END FRAME - OLE	ENCLOSED
MAIN FRAME - LE	ENCLOSED
END FRAME - LE	ENCLOSED

CUSTOMER	DISTRIBUTION SERVICE
----------	----------------------

NAMEPLATE DATA:	EXTERNAL CONNECTION DIAGRAM
MODEL NO.: F48Y59A01 CUST. P/N: 733A HP: 1/2 ROT.: REVERSIBLE RPM: 1140 TYPE: UF FRAME: 48Y VOLTS: 115/208-230 PH: 1 AMPS: 5.6/2.8 HZ: 60 INS.: B AMB.: 60° C DUTY: AIR OVER CAP.: 10 MFD/370 V ENCL: ENCLOSED UL LOGO CSA LOGO THERMALLY PROTECTED	

PERFORMANCE CURVE NO.	TORQUE @ 1140 RPM (25°C)	APPROVED SAMPLE	UL COMPONENT	CSA
			FILE #	CCN #
			FILE #	CLASS #
C32632	34.6 OZ. FT.	0600700A	E46412	PRGY2
			LR43341	4211-01

DRAWING REVISION	REVISION BY	DATE
M	R.ZHOU	02-04-2015
ECO	C.ZHANG	02-04-2015

ECO DESCRIPTION: SEE ECO

COPYRIGHT REGAL-BELOIT AMERICA, INC. ALL RIGHTS RESERVED. PROPRIETARY AND CONFIDENTIAL INFORMATION - THIS DOCUMENT IS THE PROPERTY OF REGAL-BELOIT AMERICA, INC. (OWNER) AND CONTAINS OWNER'S PROPRIETARY INFORMATION. ANY PERSON, CORPORATION OR OTHER FIRM RECEIVING IT IS DEEMED, BY RECEIVING IT, TO AGREE THAT IT, AND/OR ANY PART OF IT, SHALL NOT BE DISCLOSED TO ANY PERSON, CORPORATION OR OTHER ENTITY, DUPLICATED, AND/OR USED, EXCEPT AS EXPRESSLY APPROVED IN WRITING IN ADVANCE BY OWNER. THIS DOCUMENT SHALL BE RETURNED TO OWNER UPON REQUEST. IT MAY BE SUBJECT TO CERTAIN RESTRICTIONS UNDER APPLICABLE EXPORT CONTROL LAWS AND REGULATIONS.

DRAWN BY: CASSIE NI	DATE: 01-11-2007	APPROVED BY: TR	DATE: 02-25-2008
REFERENCE	MATERIAL	PROCESS/FINISH	
THIRD ANGLE PROJECTION	SIZE DWG NO: C	733A	SHEET 1



MODEL-RFHP-48FR  
OUTLINE