

Product Information Packet

November 9, 2016

Data shown is for the current revision model #. Ensure your nameplate model # matches.

Model Number:	5KS447LAA234B
Catalog Number:	M7671
Instruction Manual:	GEI-56128
Connection Diagram:	GEM2034E-FIG7
Outline Drawing:	239CC800AA

Accessory Connection Diagrams			
Bearing Thermocouple:	None	Heater:	None
RTD:	None	Thermistor:	None
Thermostat:	None	Winding Thermocouple:	None
Bearing RTD:	None		

Table of Contents	
Specification	01
Performance Characteristics	02
Outline Drawing	03
Connection Drawing(s)	04

Marks:

MODEL NUMBER:	5KS447LAA234B	Estimated Weight:	2590 Lbs
Outline Drawing:	239CC800AA	Time Rating:	CONT
Connection Diagram:	GEM2034E-FIG7	Enclosure:	TEFC
Instruction Book:	GEI-56128	Encl Construction:	SD
Design Code:	49BD1169A	Ambient Max(°C):	40
Type:	KS	Alt Ambient Max(°C):	--
Frame:	447T	Insulation Class:	F
Phases:	3	NEMA Design:	A
Poles:	4	Nominal Efficiency:	96.2 %
Output Power:	200HP 148KW	Guaranteed Efficiency:	95.4
RPM:	1790	3/4 Load Efficiency:	96.5
Voltage:	460	KVA Code:	H
Hertz:	60	Max KVAR:	60.1
Amps - FL:	228.0	Power Factor:	85.5
Service Factor:	1.15	Bearing - DE:	NU 318
Alt Service Factor:	--	Bearing - ODE:	6318ZC3S0

Enclosure is Totally Enclosed Fan-Cooled

Stamped Nameplate Notes:

ROLLER BEARING - FOR BELTED LOAD ONLY
 INVERTER DUTY PER NEMA MG1 PART 31
 ALTERNATE RATING FOR PWM CONTROL:
 1.0 SF VAR TORQUE RANGE 0-60 HZ

Additional Information:

4P - T EXTN
 700 CU IN - 3.00" NPT
 OIL RESISTANT SLEEVING ON LEADS
 B5F4C4 HIGH FATIGUE STEEL AISI 4142 SHAFT MATERIAL
 F1 MOUNTING
 VIBRATION LIMIT 0.0016 INCH PEAK TO PEAK

Performance Characteristics

1st Winding 1st Connection

Design: 49BD1169A

Marks:

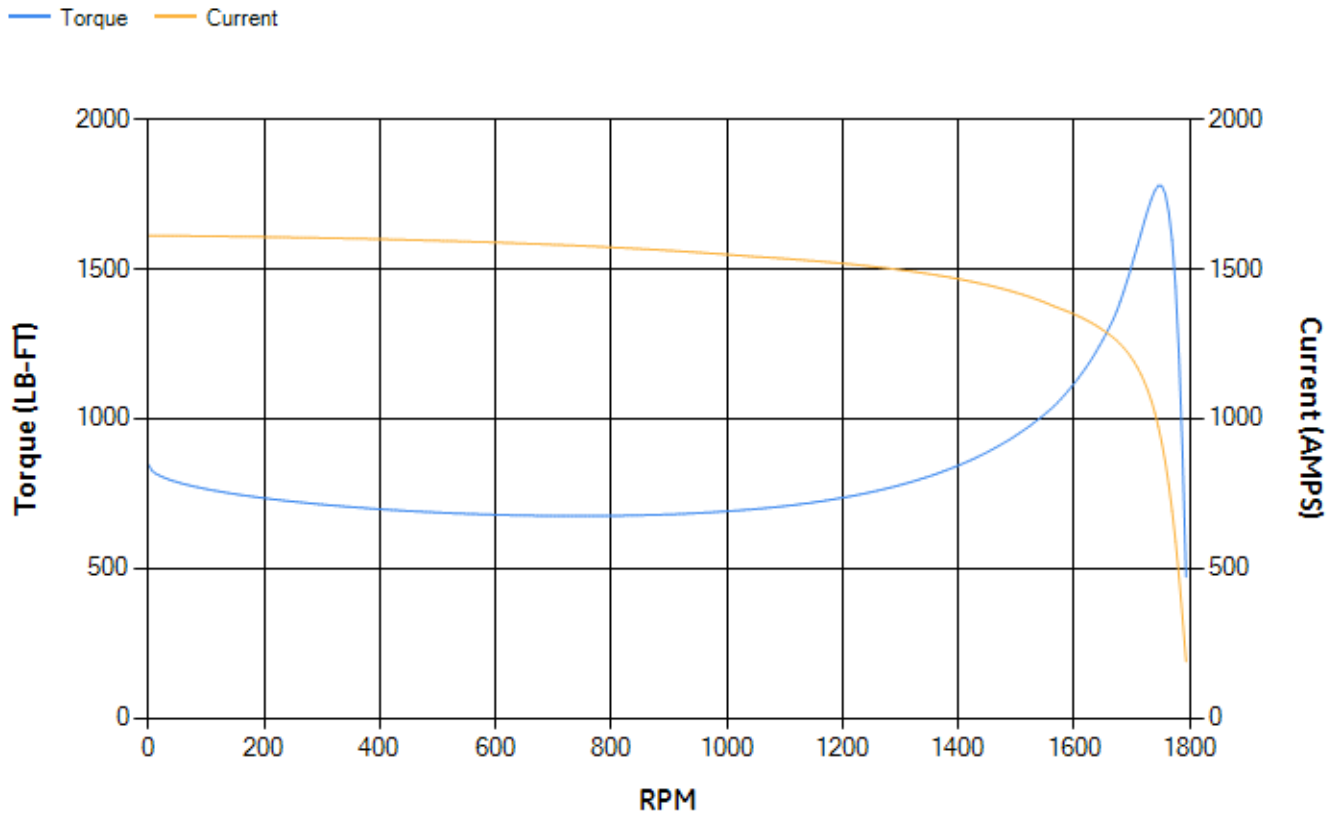
LOAD %	125.0	115.0	100.0	75.0	50.0	25.0	0.0
% EFF	95.82	96.01	96.45	96.49	96.33	94.69	0.00
% PF	87.23	86.74	85.55	81.55	72.24	49.57	2.58
AMPS	279.96	258.49	226.87	178.41	134.49	99.7	83.6

TORQ(FL)#FT	586.19	TORQ(LR)%FL	144.28	TORQ(BD)%FL	303.57
AMPS(LR)	1611.71	PF AT START	0.25		

This motor is capable of two cold or one hot start with a maximum connected load inertia of 3918 Lb-Ft Sq (164.95 Kg-meter Sq)at 100% voltage, where the load torque varies with the square of the speed. Acceleration time with maximum inertia and the above load type is 38 seconds. Safe stall time at 100% voltage is 118 seconds cold, 59 seconds hot. Rotor inertia is 89 Lb-Ft Sq (3.75 Kg-meter Sq).

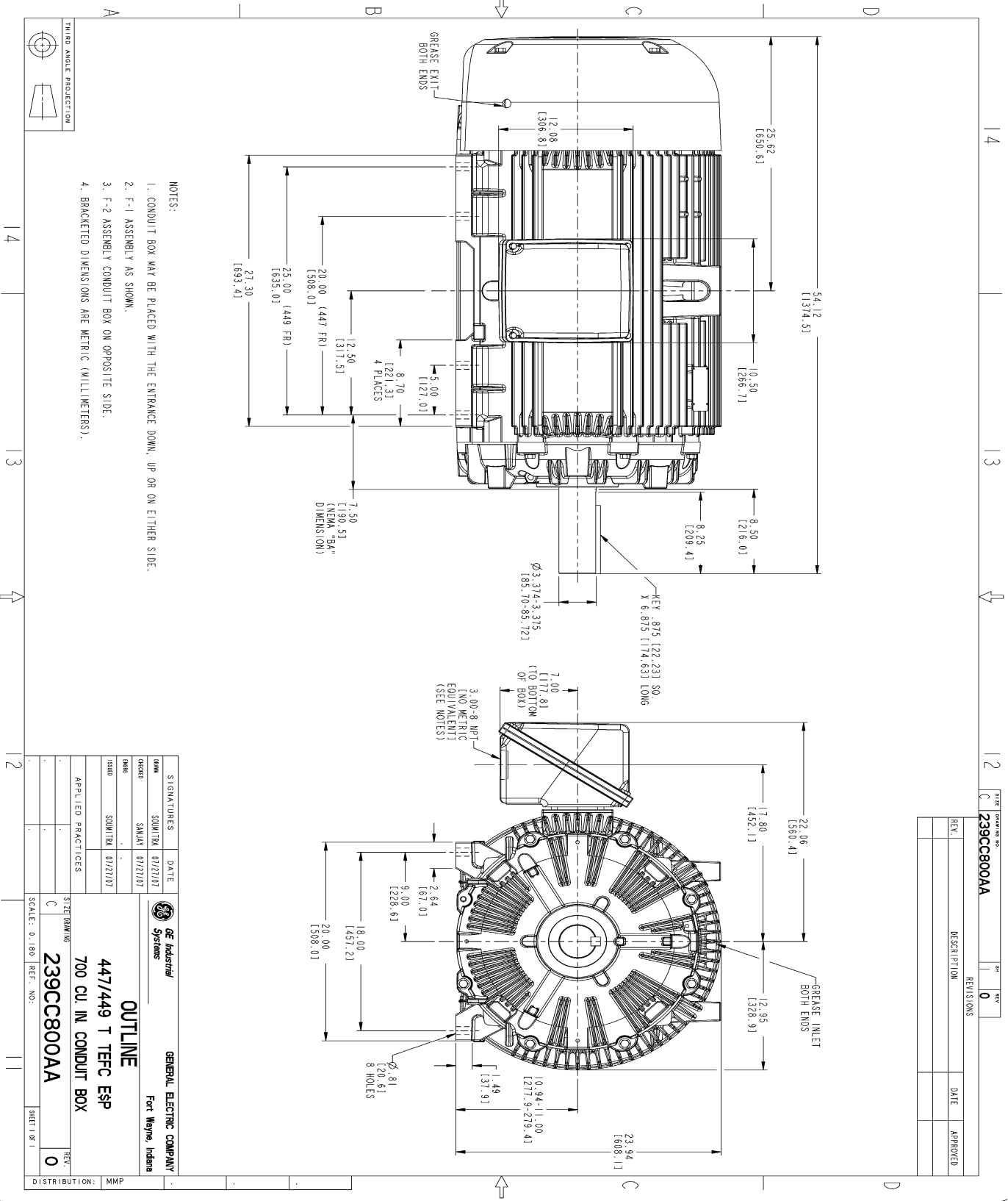
Open Circuit A-C:	1.419	Short Circuit D-C:	0.026
Short Circuit A-C:	0.066	X/R Ratio:	9.698
Stator Slots:	72	Rotor Slots:	58

Speed Torque Current Curve (First Connection, First Speed)



NAME:501352727 OBJECT:239CC800AA DATE:31-Jul-07 14:14:01

Marks:



- NOTES:
1. CONDUIT BOX MAY BE PLACED WITH THE ENTRANCE DOWN, UP OR ON EITHER SIDE.
 2. F-1 ASSEMBLY AS SHOWN.
 3. F-2 ASSEMBLY CONDUIT BOX ON OPPOSITE SIDE.
 4. BRACKETED DIMENSIONS ARE METRIC (MILLIMETERS).

REV.	DESCRIPTION	DATE	APPROVED

SIGNATURES	DATE	GENERAL ELECTRIC COMPANY
DESIGNED BY: SAJAN 01/21/07	01/21/07	Fort Wayne, Indiana
DRAWN BY: SAJAN 01/21/07	01/21/07	
APPLIED PRACTICES		OUTLINE 447/449 T TEFC ESP 700 CU. IN. CONDUIT BOX 239CC800AA
SCALE: 0.180 REF. NO.:		
SHEET NO. 1		DISTRIBUTION: MMP

Marks:

Connection Diagram
GEM2034E-FIG7

