

# Product Information Packet

October 6, 2016

Data shown is for the current revision model #. Ensure your nameplate model # matches.

<b>Model Number:</b>	<b>5CD144UC023B030</b>
<b>Catalog Number:</b>	<b>D414</b>
<b>Instruction Manual:</b>	GEH-3967N
<b>Connection Diagram:</b>	36A167960CA501
<b>Outline Drawing:</b>	36B467421AA003

Accessory Connection Diagrams			
<b>Bearing Thermocouple:</b>	None	<b>Heater:</b>	None
<b>RTD:</b>	None	<b>Thermistor:</b>	None
<b>Thermostat:</b>	None	<b>Winding Thermocouple:</b>	None
<b>Bearing RTD:</b>	None		

Table of Contents	
Specification	01
Outline Drawing	02
Connection Drawing(s)	03

Marks:

**MODEL NUMBER:** 5CD144UC023B030  
**Outline Drawing:** 36B467421AA003  
**Connection Diagram:** 36A167960CA501  
**Horsepower:** 5  
**Armature Volts:** 180  
**Wound:** SHUNT  
**Enclosure:** DPFGBV  
**Duty:** CONT  
**Rating Code:** 144U1350-00  
**K(V):** .89 Cemf volts/Radian/Sec  
**K(T):** .62 Ft/Amp  
**Minimum Ambient:** 0 C

**Enclosure Mtg Assem:** 36A167770GC207  
**Instruction Book:** GEH-3967N  
**RPM:** 1750/2050  
**Armature Amps:** 24.1  
**Type:** CDL186ATC  
**Power Supply Code:** K  
**Insulation Class:** F  
**Ambient Max (°C):** 40 C  
**Field Volts:** 200/100  
**WK2:** .67Lb Ft2  
**Year of Manufacture:** 2016  
**Max Altitude:** 3300 Ft

Resistances at 25 Degrees C :

**Shunt Field:** 189.7 OHMS  
**Armature:** .3611 OHMS  
**Commutator Field:** .1614 OHMS

Inductances:

**Armature Circuit Total:** 11.290 mH Saturated  
**Shunt Field:** 114.0 Henries Unsaturated

Shunt Field Data:

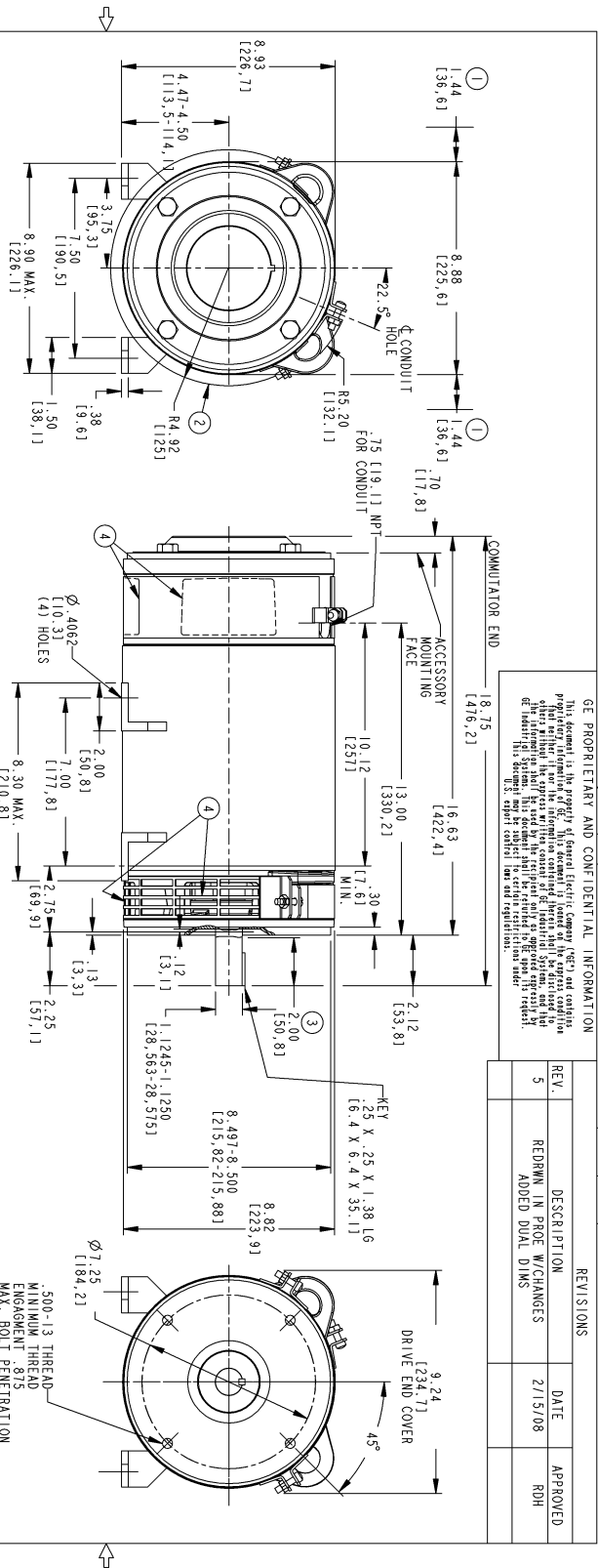
Shunt Field Current(1): .75 AMPS at Rated Load and 1750 RPM  
 Shunt Field Current(2): .66 AMPS at Rated Load and 1850 RPM  
 Shunt Field Current(3): .54 AMPS at Rated Load and 2050 RPM

Additional Machine Notes:

DRIPPROOF FULLY GUARDED, BLOWER VENTILATED - BALL BEARINGS  
 STANDARD SHAFT DRIVE END ONLY - WITH FEET  
 WITH:  
 CSA STAMP  
 THERMOSTAT- NORMALLY CLOSED, AC RATING- 600V MAX-  
 .5A, 250V-1.5A, OR 125V-3A, DC RATING- 30V MAX-  
 1.5A. MAXIMUM CURRENT BASED ON INDUCTIVE LOADS UP  
 TO AND INCLUDING NEMA NO.5 CONTACTOR.

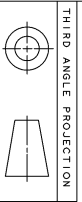
NAME:208009544 OBJECT:36B467421AA003 DATE:29-Apr-08 14:14:19

Marks:



- ① SPLASHPROOF FULLY GUARDED MACHINES WILL HAVE ADDITIONAL COVERS INCREASING THE OVERALL WIDTH AT THE COMMUTATOR END AND DRIVE END SIDE AIR OPENINGS.
- ② ADDITIONAL COVERS INCREASING THE OVERALL WIDTH AND EXCEEDING BOTTOM OR MOUNTING FEET AT THE COMMUTATOR END OPENINGS.
- ③ REPRESENTS MINIMUM LENGTH OF SHAFT AVAILABLE FOR HUBS.
- ④ AIR OPENINGS, FOR ENCLOSURE TYPE AND MOUNTING POSITION. SEE ENCLOSURE AND MOUNTING ASSEMBLY. TOTALLY ENCLOSED MACHINES WILL NOT HAVE OPENINGS OR COVERS ON DRIVE END.
- ⑤ MOUNTING FACE WILL BE SQUARE AND RABBIT DIAMETER CONCENTRIC WITH SHAFT WITH  $\pm .004$  (0.10 mm) INCH TOTAL INDICATOR READING. SHAFT ROUNDOFF NOT TO EXCEED  $\pm .002$  (0.051 mm) INCH TOTAL INDICATOR READING.
- ⑥ FEET WILL BE SUPPLIED UNLESS OTHERWISE SPECIFIED.

APPROX. NET WT. = 104 LBS.



Part must conform to SI 900000 Sect. 4, Toxicity Procedure

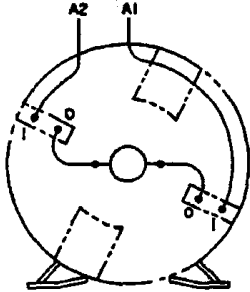
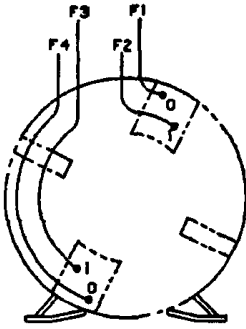
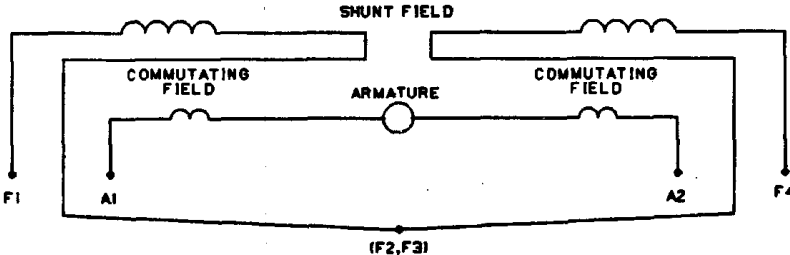
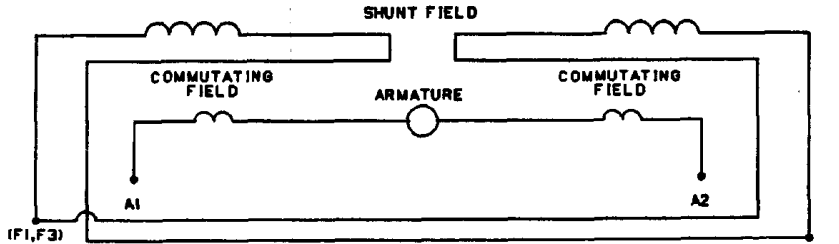
FOR ADDITIONAL INFO REFER TO:	SIGNATURES	DATE
DETAILS	P. HIEBELER	8/2/08
CHECKED		
ENGINEER		
3 PL. DECIMALS ± 0.005		
ANGLES ± 1.0		
FINISH		
ISSUED	E. HARRIS	2/15/08
SOLID MODEL: 36B467421AA003		

TITLE	REV
OUTLINE - C FACE	5
FWF:CDL186ATC	
DEMEMA AT GE/ACS	
36B467421AA003	
SCALE: 0.250	
REF. No.:	
SHEET 1 OF 1	

GE PROPRIETARY AND CONFIDENTIAL INFORMATION  
 This document is the property of General Electric Company (GE) and contains proprietary information of GE. This document is loaned to the recipient under the condition that it is to be used for the recipient's internal use only and is not to be distributed outside the recipient's organization. The recipient shall not be held responsible for any unauthorized disclosure of this information. This document may be subject to additional restrictions under applicable U.S. export control laws and regulations.

REV.	DESCRIPTION	DATE	APPROVED
5	REDRAWN IN PROC W/CHANGES ADDED DUAL DIAMS	2/15/08	RDH

Marks:

NO S.O.	<b>GENERAL ELECTRIC</b>	36A167960CA501 CONT ON SHEET SH NO.
REV 1 36A167960CA501 CONT ON SHEET	TITLE <b>CONNECTION DIAGRAM</b>	SH NO. FIRST MADE FOR 180AT 2 POLE
DIRECT CURRENT MOTOR AND GENERATOR - SHUNT WOUND 1 OR 2 CIRCUIT SHUNT FIELD, 1 CIRCUIT COMMUTATING FIELD		
VIEWS FACING COMMUTATOR END		
		
COMMUTATING FIELD AND ARMATURE	SHUNT FIELD	
<p>ALL EXTERNAL LEADS ARE MARKED. ALL CONNECTIONS AND TERMINATIONS EXTERNAL TO MAGNET FRAME MUST BE INSULATED PER NATIONAL ELECTRICAL CODE AND SOUND LOCAL PRACTICES.</p> <p>SPACE HEATERS, WHEN SPECIFIED, WILL HAVE LEADS WITH TERMINAL MARKINGS H1 AND H2.</p> <p>THERMOSTAT, WHEN SPECIFIED, WILL HAVE LEADS WITH TERMINAL MARKINGS P1 AND P2.</p> <p>ENCIRCLED NUMBERS MAY BE USED FOR PART IDENTIFICATION.</p>		
<p>FOR HIGH NAMEPLATE EXCITATION VOLTAGE CONNECT SHUNT FIELD LEADS AS INDICATED</p>		
<p>MOTOR CONNECTIONS: FOR CCW ROTATION FACING COMM END, MAKE LEADS F1 AND A1 THE SAME POLARITY. FOR CW ROTATION FACING COMM END, MAKE LEADS F1 AND A2 THE SAME POLARITY.</p>	(F2, F3)	<p>GENERATOR CONNECTIONS: FOR CW ROTATION FACING COMM END, F1 POSITIVE WILL MAKE A2 POSITIVE. FOR CCW ROTATION FACING COMM END, F1 POSITIVE WILL MAKE A2 POSITIVE.</p>
<p>FOR LOW NAMEPLATE EXCITATION VOLTAGE CONNECT SHUNT FIELD LEADS AS INDICATED</p>		
<p>MOTOR CONNECTIONS: FOR CCW ROTATION FACING COMM END, MAKE LEADS (F1, F3) AND A1 THE SAME POLARITY. FOR CW ROTATION FACING COMM END, MAKE LEADS (F1, F3) AND A2 THE SAME POLARITY.</p>	(F1, F3)	<p>GENERATOR CONNECTIONS: FOR CW ROTATION FACING COMM END, (F1, F3) POSITIVE WILL MAKE A2 POSITIVE. FOR CCW ROTATION FACING COMM END, (F1, F3) POSITIVE WILL MAKE A1 POSITIVE.</p>
<p>94-10-12 NO S.O. DC HILL RETRACED</p>	<p>MADE BY N STEWART 75-08-05</p> <p>RE-ISSUED CAD/DC Hill 94-10-12</p>	<p>APPROVALS FILE KC13-1</p> <p>GE MOTORS ERIE</p> <p>DIV OR DEPT LOCATION</p> <p>36A167960CA501 CONT ON SHEET SH NO.</p>

ORIGINAL FRACING

49-3131 4487 CAD  
DISTR TO

C5X.A.36A167960CA501R01



imagination at work