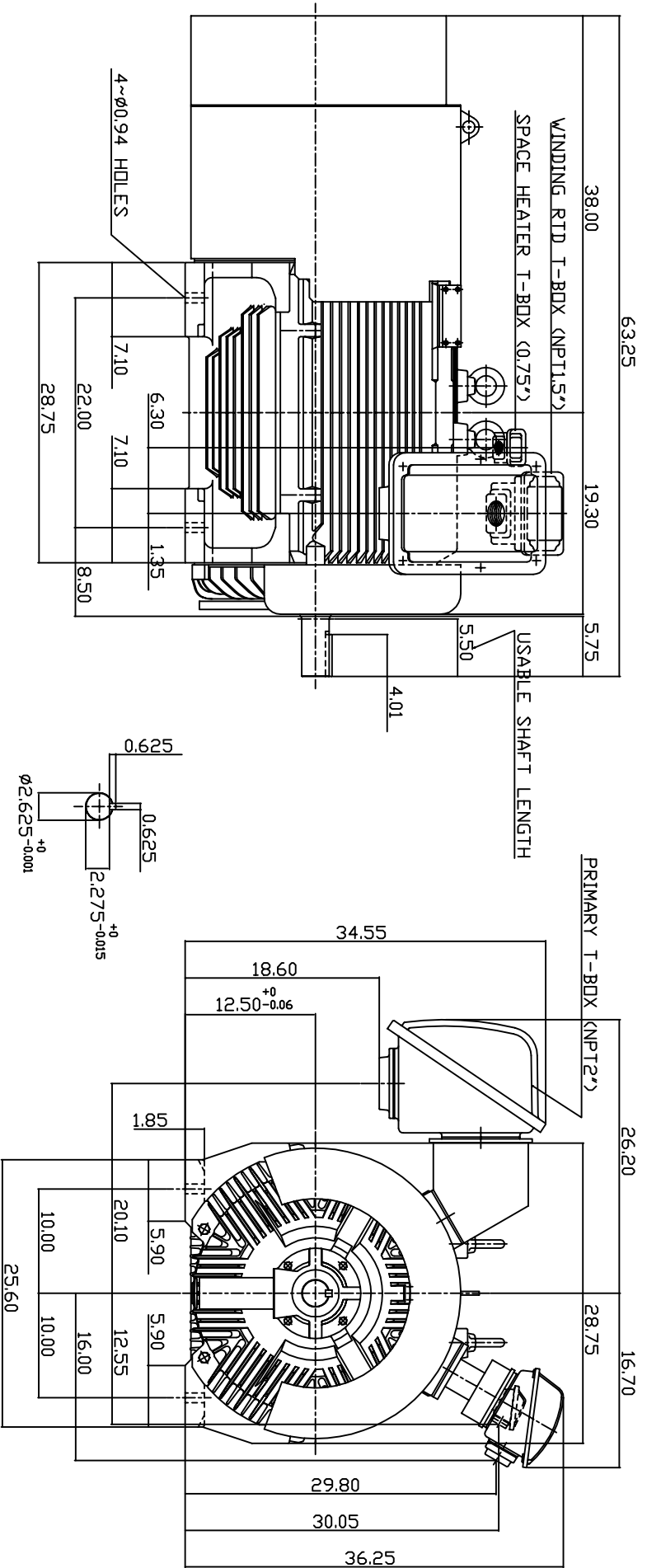


TYPE	OUTPUT		POLE	TIME RATING	VOLTAGE V	Hz	SYN SPEED R.P.M
	HP.	KW.					
AEHG1K	250	187	2	COND.	2300/4160	60	3600

TOTALLY ENCLOSED FAN-COOLED TYPE, SQUIRREL-CAGE ROTOR



NOTE: 1. DIMENSIONS IN INCH.

- FRAME NO. 5007A
- F CLASS INSULATION, S.F.115
- FOR DIRECT FLEXIBLE COUPLING
- WITH SPACE HEATER 120 VOLT SINGLE PHASE 200 WATTS
- WITH 100 OHM PLATINUM WINDING RTD'S 2/PHASE
- BEARING SIZE: DRIVE END: 6315C3  
NON-DRIVE END: 6315C3
- MOTOR APPROX. WEIGHT: 3200 LBS

TW-56C

DWN.	W.LLIN	APR-08-2003
CHKD.	W.LLIN	APR-08-2003
APPD.	C.WANG	APR-08-2003

DATE	MAY 5, 2004	OUTLINE DIMENSIONS
CATALOG NO.	KG2502	
3-PHASE INDUCTION MOTOR		DWG NO.
TEG Westinghouse		3A040T4430
		REV: 00