

# Product Information Packet

January 13, 2017

Data shown is for the current revision model #. Ensure your nameplate model # matches.

<b>Model Number:</b>	<b>5KS365DAJ7005A</b>
<b>Catalog Number:</b>	<b>V4606</b>
<b>Instruction Manual:</b>	GEK-95353
<b>Connection Diagram:</b>	GEM2034E-FIG3
<b>Outline Drawing:</b>	148CB36VMHKBCAA0001

## Accessory Connection Diagrams

<b>Bearing Thermocouple:</b>	None	<b>Heater:</b>	3027JE-1C
<b>RTD:</b>	None	<b>Thermistor:</b>	None
<b>Thermostat:</b>	None	<b>Winding Thermocouple:</b>	None
<b>Bearing RTD:</b>	None		

## Table of Contents

Specification	01
Performance Characteristics	02
Outline Drawing	03
Connection Drawing(s)	04
Spare parts	05



**Marks:**

<b>MODEL NUMBER:</b>	<b>5KS365DAJ7005A</b>	<b>Estimated Weight:</b>	980 Lbs
<b>Outline Drawing:</b>	148CB36VMHKBCAA0001	<b>Time Rating:</b>	CONT
<b>Connection Diagram:</b>	GEM2034E-FIG3	<b>Enclosure:</b>	WPI
<b>Instruction Book:</b>	GEK-95353	<b>Encl Construction:</b>	OPEN
<b>Design Code:</b>	36BD3100A	<b>Ambient Max(°C):</b>	40
<b>Type:</b>	KS	<b>Alt Ambient Max(°C):</b>	--
<b>Frame:</b>	L365TP16	<b>Insulation Class:</b>	H
<b>Phases:</b>	3	<b>NEMA Design:</b>	B
<b>Poles:</b>	6	<b>Nominal Efficiency:</b>	94.1 %
<b>Output Power:</b>	50HP 37KW	<b>Guaranteed Efficiency:</b>	93.0
<b>RPM:</b>	1185	<b>3/4 Load Efficiency:</b>	94.4
<b>Voltage:</b>	230/460	<b>KVA Code:</b>	G
<b>Hertz:</b>	60	<b>Max KVAR:</b>	20.1
<b>Amps - FL:</b>	123.6/61.8	<b>Power Factor:</b>	80.5
<b>Service Factor:</b>	1.15	<b>Bearing - DE:</b>	6212C3
<b>Alt Service Factor:</b>	--	<b>Bearing - ODE:</b>	235A2523AD01

**Enclosure is Weather Protected One**

**Stamped Nameplate Notes:**

HTR LDS HE1-HE2 115V 100W  
 ROT CCW FACING ODE LEAD/PH SEQ 1-2-3/1-2-3  
 INVERTER DUTY PER NEMA MG1 PART 31  
 ALTERNATE RATING FOR PWM CONTROL:1.0SF 40C AMBIENT  
 VAR TORQUE RANGE 8-60 HZ  
 SUITABLE FOR 40 HP, 190/380V 50HZ WITH  
 144.2/72.1 AMPS AND 980 RPM AT 1.0 SF

**Additional Information:**

6 POLE, VERT HOLLOW SHAFT HIGH THRUST (1D)  
 SPECIAL BALANCE  
 346 CU IN - 3.00" NPT  
 BEARING LIFE 8760 HRS AT 6700 LB THRUST  
 OIL RESISTANT SLEEVING ON LEADS  
 115V HTR LDS TO MAIN CONDUIT BOX  
 COUPLING NOT INCLUDED IN BOM, WILL BE  
 ORDERED SEPERATELY  
 CG: 15.31 IN FROM P-BASE FACE  
 RCF: 3180 CPM AT C/BOX SIDE, 3180 CPM AT  
 90 DEG FROM C/ BOX SIDE

**Performance Characteristics**

1st Winding 1st Connection

**Design: 36BD3100A**

Marks:

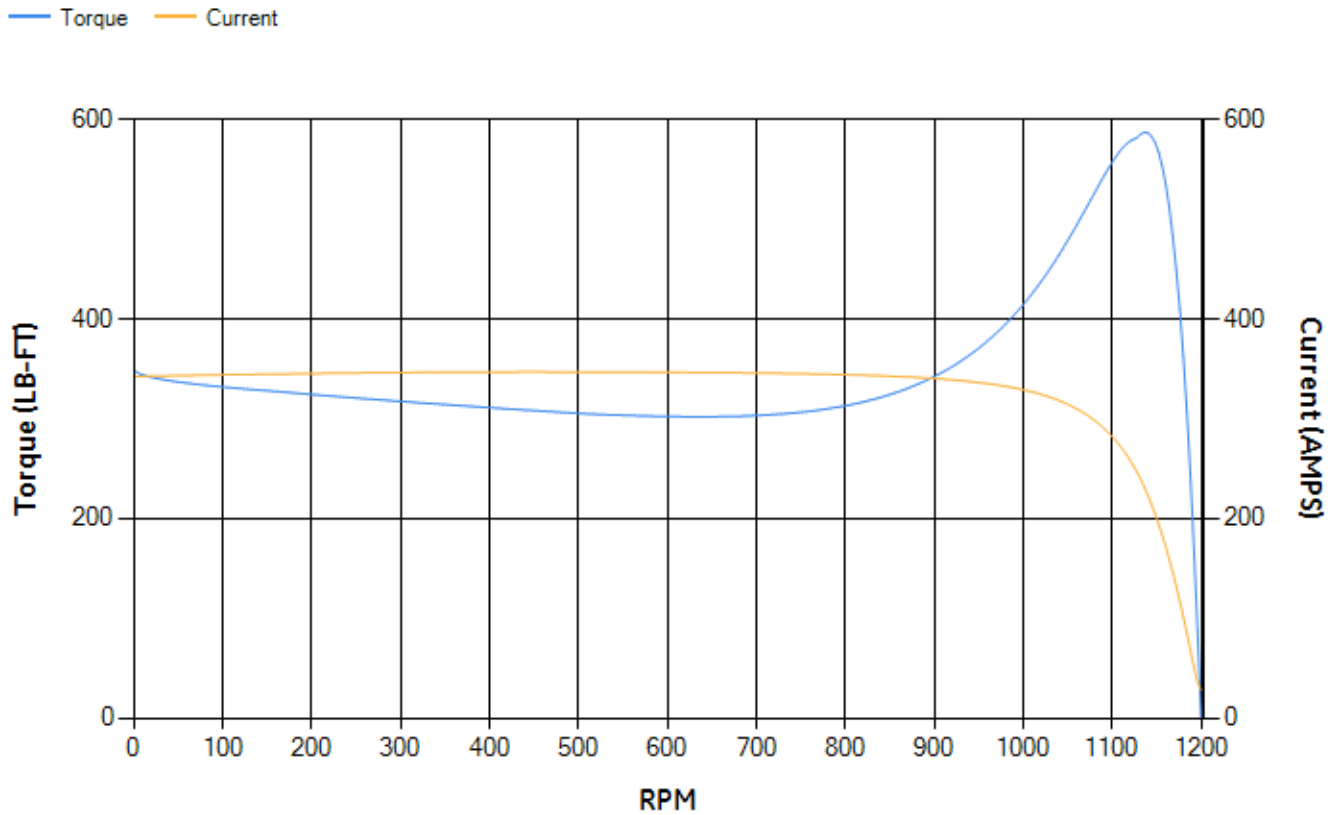
LOAD %	125.0	115.0	100.0	75.0	50.0	25.0	0.0
% EFF	93.26	93.58	94.19	94.41	94.16	91.6	0.00
% PF	83.02	82.18	80.31	74.68	63.25	40.52	3.05
AMPS	75.55	69.97	61.72	49.78	39.29	31.52	27.97

<b>TORQ(FL)#FT</b>	221.19	<b>TORQ(LR)%FL</b>	158.17	<b>TORQ(BD)%FL</b>	261.93
<b>AMPS(LR)</b>	342.32	<b>PF AT START</b>	0.38		

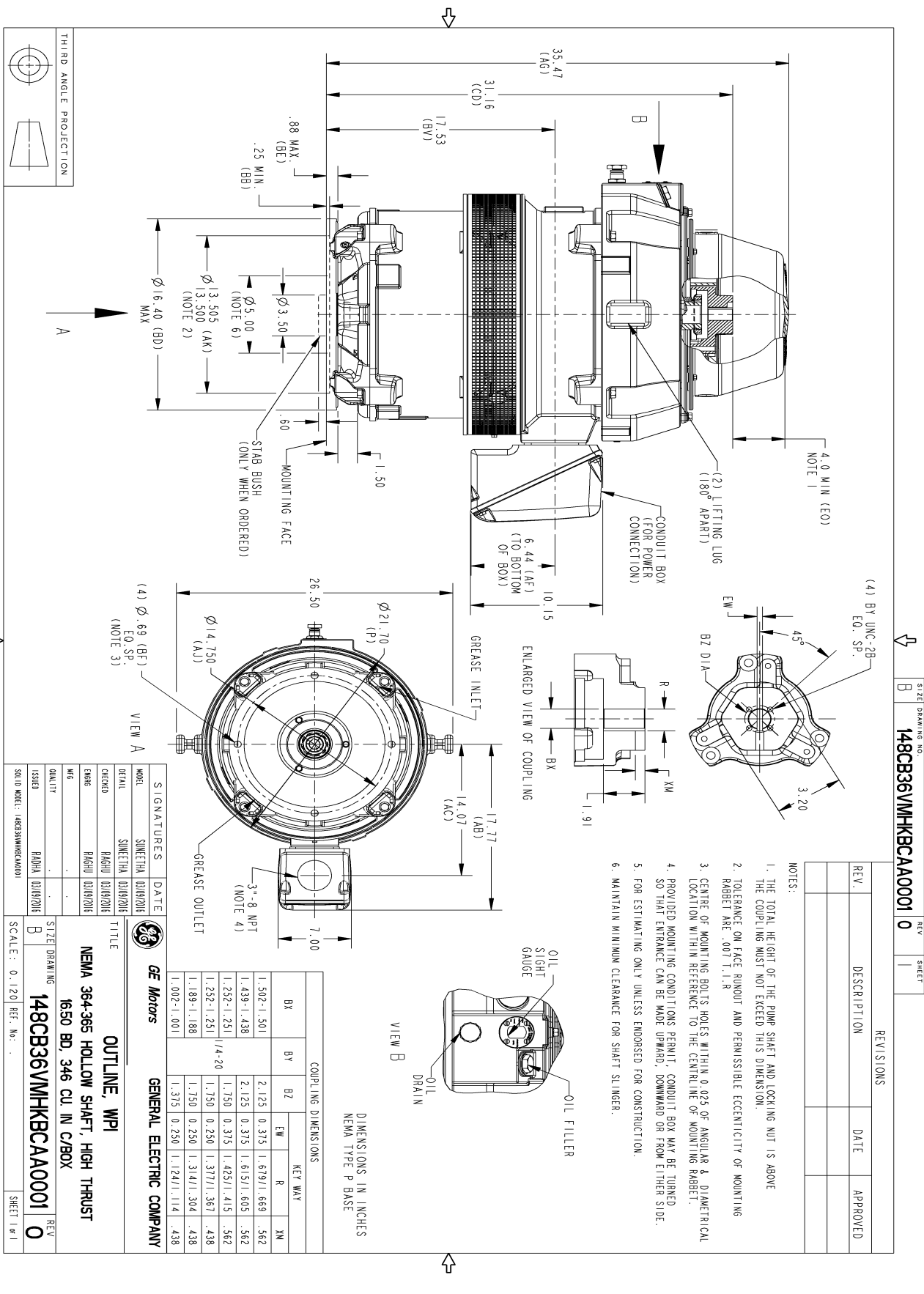
This motor is capable of two cold or one hot start with a maximum connected load inertia of 3244 Lb-Ft Sq (136.57 Kg-meter Sq)at 100% voltage, where the load torque varies with the square of the speed. Acceleration time with maximum inertia and the above load type is 46 seconds. Safe stall time at 100% voltage is 89 seconds cold, 66 seconds hot. Rotor inertia is 18.01 Lb-Ft Sq (0.76 Kg-meter Sq).

<b>Open Circuit A-C:</b>	0.494	<b>Short Circuit D-C:</b>	0.016
<b>Short Circuit A-C:</b>	0.03	<b>X/R Ratio:</b>	5.892
<b>Stator Slots:</b>	72	<b>Rotor Slots:</b>	58

**Speed Torque Current Curve (First Connection, First Speed)**

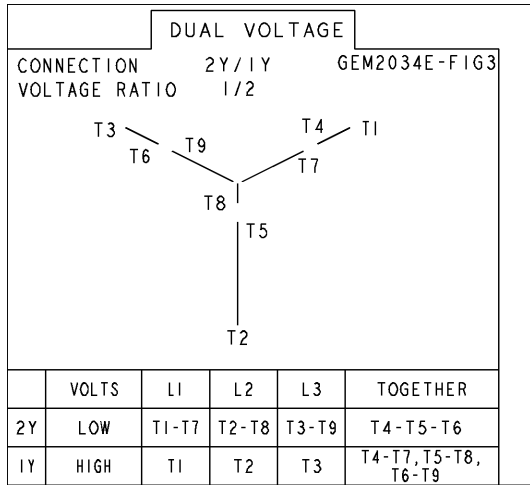


Marks:



Marks:

**Connection Diagram**  
**GEM2034E-FIG3**



**Heater Connection**  
**3027JE-1C**



End shield Assembly		
Part Description	DE Side Part#	ODE Side Part#
End Shield	115E7255AA1	115E7259LA1
Bearing	235A2509BE01	235A2523AD01
Slinger/Inproseal	235A2300FM1	

Fan & Fan Cover Assembly	
Part Description	Part#
Fan	
Fan Cover	149C4054AA1

Conduit & Accessories Box Assembly	
Part Description	Part#
Conduit Box	149C4429AA2

Mechanical Accessories	
Part Description	Part#
Brake	
Tachometer	