

Product Information Packet

November 9, 2016

Data shown is for the current revision model #. Ensure your nameplate model # matches.

Model Number:	5KS324SAA114D9
Catalog Number:	M9829
Instruction Manual:	GEI-56128
Connection Diagram:	GEM2034E-FIG7
Outline Drawing:	239C6000AF

Accessory Connection Diagrams			
Bearing Thermocouple:	None	Heater:	None
RTD:	None	Thermistor:	None
Thermostat:	None	Winding Thermocouple:	None
Bearing RTD:	None		

Table of Contents

Specification	01
Performance Characteristics	02
Outline Drawing	03
Connection Drawing(s)	04
Spare parts	05



Marks:

MODEL NUMBER:	5KS324SAA114D9	Estimated Weight:	620 Lbs
Outline Drawing:	239C6000AF	Time Rating:	CONT
Connection Diagram:	GEM2034E-FIG7	Enclosure:	TEFC
Instruction Book:	GEI-56128	Encl Construction:	X\$D
Design Code:	32BD0110B	Ambient Max(°C):	40
Type:	KS	Alt Ambient Max(°C):	60
Frame:	324TS	Insulation Class:	H
Phases:	3	NEMA Design:	B
Poles:	2	Nominal Efficiency:	93.0 %
Output Power:	40HP 29.6KW	Guaranteed Efficiency:	92.4
RPM:	3565	3/4 Load Efficiency:	92.9
Voltage:	575	KVA Code:	G
Hertz:	60	Max KVAR:	14.8
Amps - FL:	38.8	Power Factor:	83.0
Service Factor:	1.15	Bearing - DE:	6312ZC3
Alt Service Factor:	1.00	Bearing - ODE:	6312ZC3

Enclosure is Totally Enclosed Fan-Cooled

Stamped Nameplate Notes:

STAMP NP249A5564P051 AS BELOW:
 MODEL:5KS324SAA114D9 S/N: XXX
 CSA CERTIFIED CSA09.2216219 FOR EX NA IIC 200 C GC
 CL 1 ZONE2 AEX NA IIC 200C;CL 1 DIV2 GRP ABCD 200C
 IN -40C <= AMB <= 40C, 1.0 SF ON SINE-WAVE PWR
 SURF TEMP 260C AT 1.15SF ON SINE-WAVE PWR
 OR 200C VT OR 230C CT OR 200C CHP PWM CONTROL
 ALTERNATE RATING FOR PWM CONTROL 1.0SF 40C AMB
 VT 0 - 60 HZ, CT 8.6-60 HZ, CHP 60-75 HZ.

Additional Information:

2P - TS EXTN
 346 CU IN - 3.00" NPT
 OIL RESISTANT SLEEVING ON LEADS
 F1 MOUNTING
 TEFC XSD ULTRA STOCK 08/24/2016
 ENGINEERED BY: BALASUBRAMANIANH/BILURP

Performance Characteristics

1st Winding 1st Connection

Design: 32BD0110B

Marks:

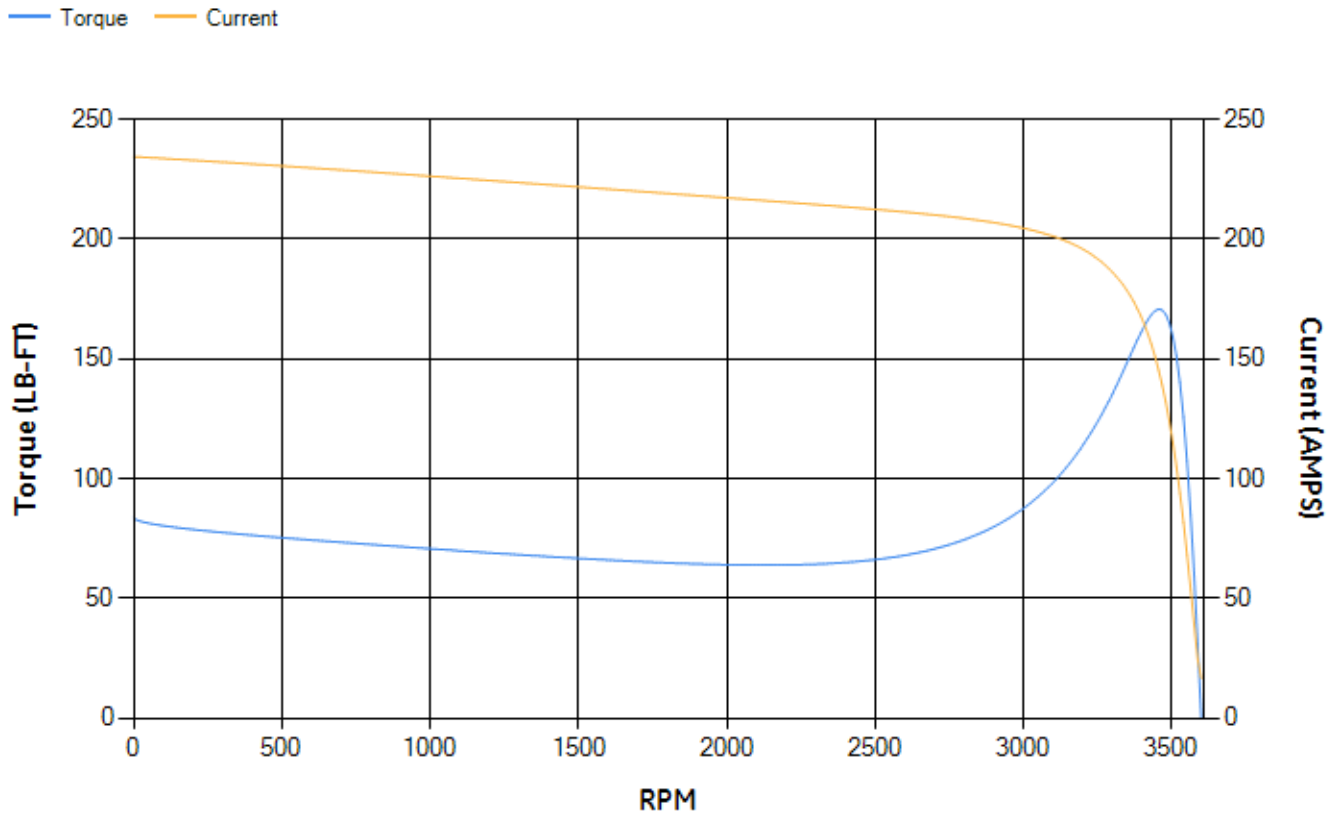
LOAD %	125.0	115.0	100.0	75.0	50.0	25.0	0.0
% EFF	92.49	92.7	93.11	92.87	91.82	87.22	0.00
% PF	85.26	84.55	82.94	77.97	67.42	45.18	5.71
AMPS	47.48	43.94	38.73	31.02	24.19	19	16.54

TORQ(FL)#FT	58.9	TORQ(LR)%FL	142.09	TORQ(BD)%FL	289.7
AMPS(LR)	234.43	PF AT START	0.29		

This motor is capable of two cold or one hot start with a maximum connected load inertia of 115 Lb-Ft Sq (4.84 Kg-meter Sq)at 100% voltage, where the load torque varies with the square of the speed. Acceleration time with maximum inertia and the above load type is 23 seconds. Safe stall time at 100% voltage is 53 seconds cold, 28 seconds hot. Rotor inertia is 3.14 Lb-Ft Sq (0.13 Kg-meter Sq).

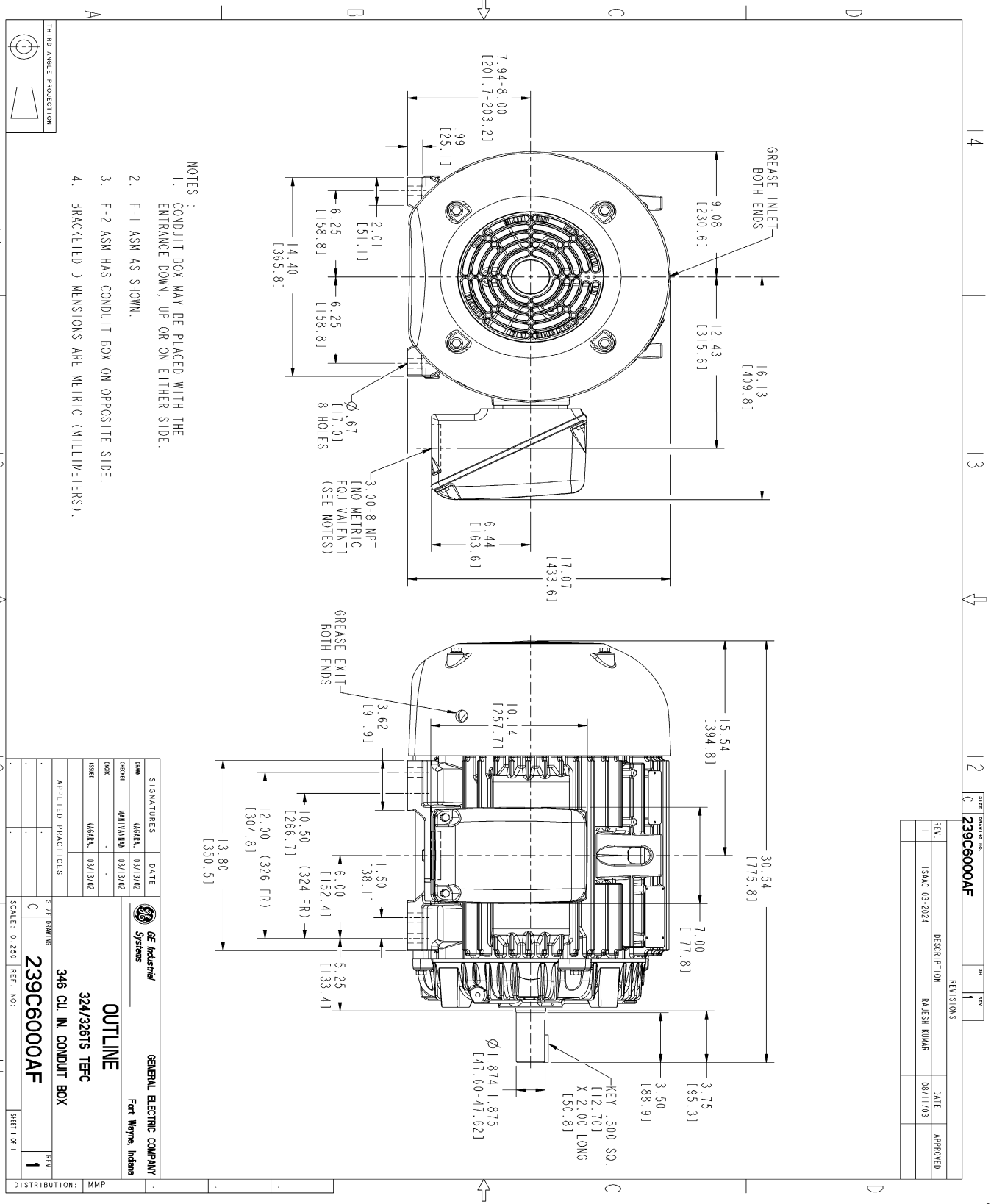
Open Circuit A-C:	0.611	Short Circuit D-C:	0.018
Short Circuit A-C:	0.041	X/R Ratio:	6.597
Stator Slots:	48	Rotor Slots:	38

Speed Torque Current Curve (First Connection, First Speed)

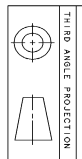


NAME: 103016807 OBJECT: 239C6000AF DATE: 12-Aug-03 15:47:45

Marks:



- NOTES:
1. CONDUIT BOX MAY BE PLACED WITH THE ENTRANCE DOWN, UP OR ON EITHER SIDE.
 2. F-1 ASM AS SHOWN.
 3. F-2 ASM HAS CONDUIT BOX ON OPPOSITE SIDE.
 4. BRACKETED DIMENSIONS ARE METRIC (MILLIMETERS).



SIGNATURES		DATE	
DRAWN	W08RKL	03/13/02	
CHECKED	MANIVANNAN	03/13/02	
DESIGN			
ISSUED	W08RKL	03/13/02	

APPLIED PRACTICES

SCALE: 0.250 REF. NO.:

GENERAL ELECTRIC COMPANY
Fort Wayne, Indiana

OUTLINE
324/326TS TEFC
346 CU, IN. CONDUIT BOX

SHEET DRAWING
239C6000AF
SHEET 0F 1
REV 1

DISTRIBUTION: MMP

SHEET DRAWING NO. 239C6000AF

REV. 1

REVISIONS		DATE	APPROVED
1	DESCRIPTION	08/11/03	

Marks:

Connection Diagram
GEM2034E-FIG7



End shield Assembly		
Part Description	DE Side Part#	ODE Side Part#
End Shield	115E4200AA1	115E4200LA1
Bearing	235A2609AA01	235A2609AA01
Slinger/Inproseal	149C4399G04	149C4399G04

Fan & Fan Cover Assembly	
Part Description	Part#
Fan	159C6700G02
Fan Cover	128D6800AA1

Conduit & Accessories Box Assembly	
Part Description	Part#
Conduit Box	149C4429AA2

Mechanical Accessories	
Part Description	Part#
Brake	
Tachometer	