

Product Information Packet

November 8, 2016

Data shown is for the current revision model #. Ensure your nameplate model # matches.

Model Number:	5KS405XAA118D8
Catalog Number:	M9466
Instruction Manual:	GEI-56128
Connection Diagram:	GEM2034E-FIG7
Outline Drawing:	239C6400RA

Accessory Connection Diagrams			
Bearing Thermocouple:	None	Heater:	None
RTD:	None	Thermistor:	None
Thermostat:	None	Winding Thermocouple:	None
Bearing RTD:	None		

Table of Contents

Specification	01
Performance Characteristics	02
Outline Drawing	03
Connection Drawing(s)	04
Spare parts	05



Marks:

MODEL NUMBER:	5KS405XAA118D8	Estimated Weight:	1510 Lbs
Outline Drawing:	239C6400RA	Time Rating:	CONT
Connection Diagram:	GEM2034E-FIG7	Enclosure:	TEFC
Instruction Book:	GEI-56128	Encl Construction:	841
Design Code:	40BD0052A	Ambient Max(°C):	40
Type:	KS	Alt Ambient Max(°C):	--
Frame:	405TS	Insulation Class:	H
Phases:	3	NEMA Design:	B
Poles:	2	Nominal Efficiency:	95.0 %
Output Power:	100HP 74KW	Guaranteed Efficiency:	94.5
RPM:	3565	3/4 Load Efficiency:	95.5
Voltage:	460	KVA Code:	G
Hertz:	60	Max KVAR:	17.0
Amps - FL:	108.0	Power Factor:	91.0
Service Factor:	1.15	Bearing - DE:	6213ZC3
Alt Service Factor:	--	Bearing - ODE:	6213ZC3

Enclosure is Totally Enclosed Fan-Cooled

Stamped Nameplate Notes:

DE BRG 65BC02JP30, ODE BRG 65BC02JP30
 STAMP NP249A5564P051 AS BELOW:
 MODEL:5KS405XAA118D8 S/N: XXX
 CSA CERTIFIED CSA09.2216219 FOR EX NA IIC 200 C GC
 CL 1 ZONE2 AEX NA IIC 200C;CL 1 DIV2 GRP ABCD 200C
 IN -25C <= AMB <= 40C, 1.0 SF ON SINE-WAVE PWR
 SURF TEMP 260C AT 1.15SF ON SINE-WAVE PWR
 OR 215 C VT OR 230 C CT OR --- C CHP PWM CONTROL
 ALTERNATE RATING FOR PWM CONTROL 1.0SF 40C AMB
 VT 0-60 HZ, CT 8.6-60 HZ, CHP --- HZ.
 EXCEPTION TO IEEE-STD-841-2009:SOUND POWER 92 DBA

Additional Information:

2P - TS EXTN
 PAINTED FRAME ID & SHAFT,
 FAN COVER INSIDE & ODE E/S OUTSIDE
 700 CU IN - 3.00" NPT
 INPRO SEAL BOTH ENDS
 OIL RESISTANT SLEEVING ON LEADS
 .0015" TIR SHAFT RUNOUT
 ROUTINE TEST REPORT AND 5 POINT VIBRATION TEST
 REPORT INCLUDED IN C/B
 COPPER WASHER UNDER HEADS OF BEARING CAP BOLTS,
 APPLY TITE-SEAL (A50CD427A) ON BEARING CAP SCREWS,
 RABBETS AND PLUG THREADS.
 GROUND PAD
 F1 MOUNTING



Performance Characteristics

1st Winding 1st Connection

Design: 40BD0052A

Marks:

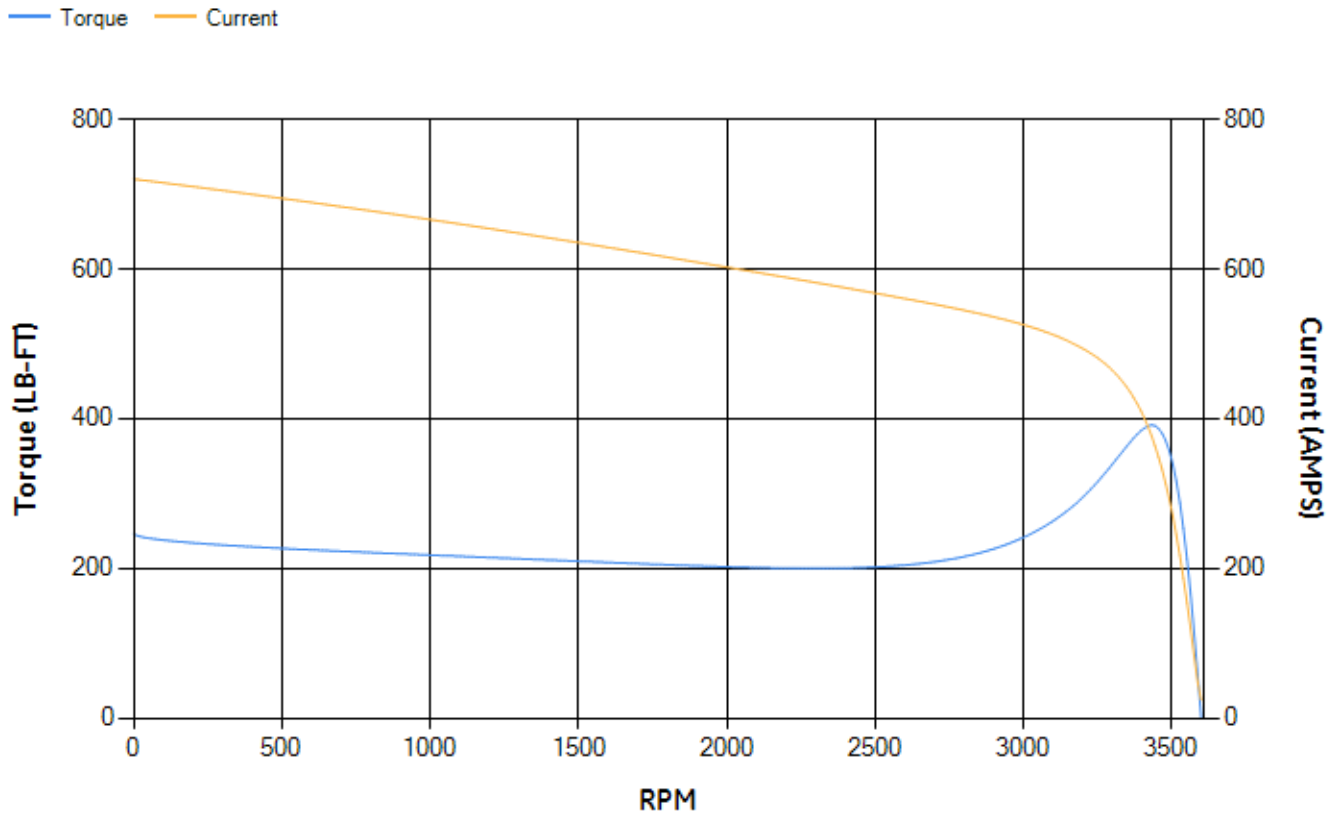
LOAD %	125.0	115.0	100.0	75.0	50.0	25.0	0.0
% EFF	94.74	94.97	95.45	95.48	95.13	92.73	0.00
% PF	90.94	91.13	91.15	90.09	85.98	70.48	6.69
AMPS	135.78	124.35	107.59	81.61	57.22	35.8	23.71

TORQ(FL)#FT	147.31	TORQ(LR)%FL	167.51	TORQ(BD)%FL	265.48
AMPS(LR)	720.22	PF AT START	0.25		

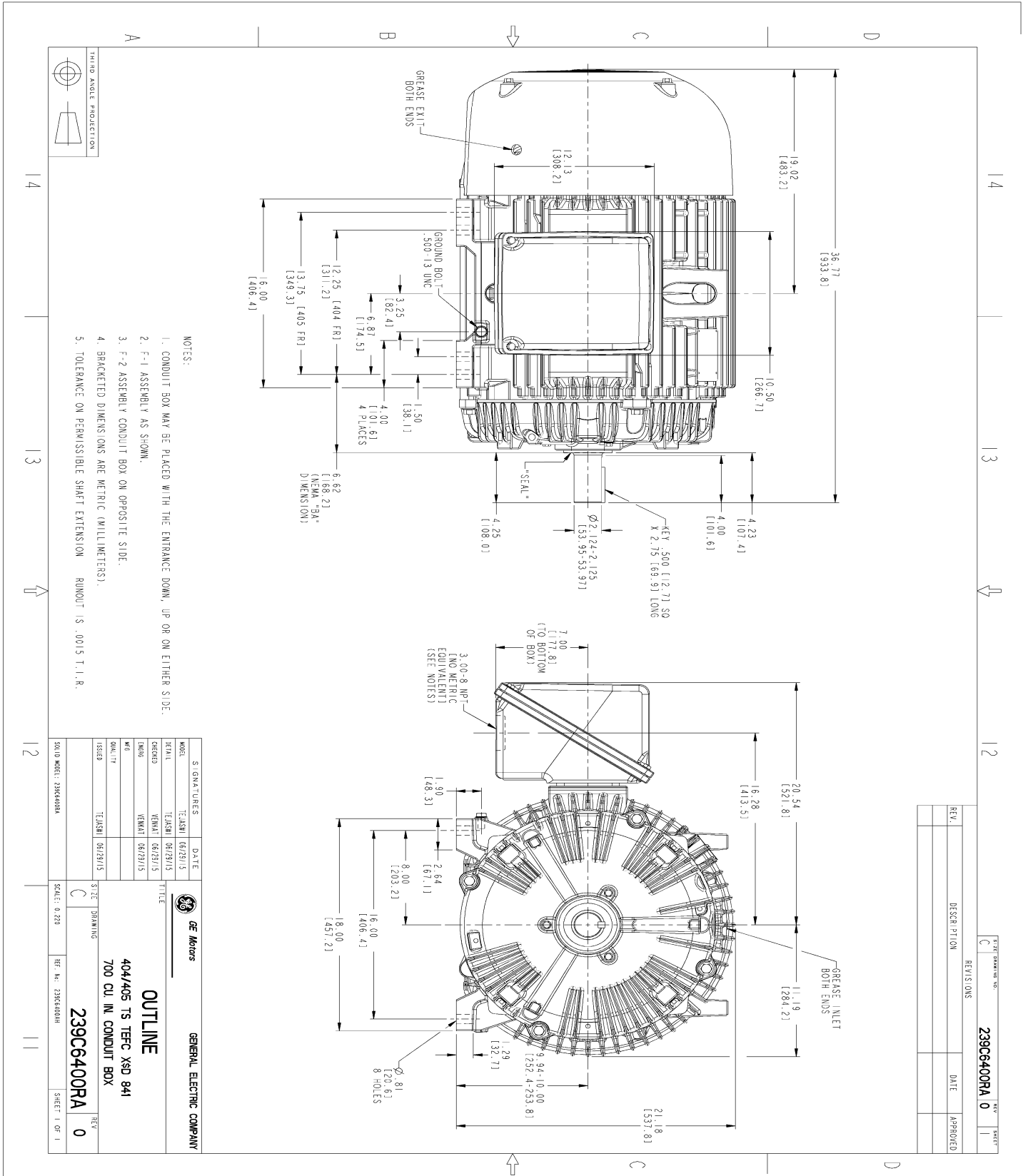
This motor is capable of two cold or one hot start with a maximum connected load inertia of 362 Lb-Ft Sq (15.24 Kg-meter Sq)at 100% voltage, where the load torque varies with the square of the speed. Acceleration time with maximum inertia and the above load type is 24 seconds. Safe stall time at 100% voltage is 58 seconds cold, 29 seconds hot. Rotor inertia is 15.17 Lb-Ft Sq (0.64 Kg-meter Sq).

Open Circuit A-C:	1.215	Short Circuit D-C:	0.03
Short Circuit A-C:	0.044	X/R Ratio:	11.377
Stator Slots:	48	Rotor Slots:	38

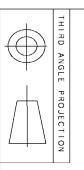
Speed Torque Current Curve (First Connection, First Speed)



Marks:



- NOTES:
- CONDUIT BOX MAY BE PLACED WITH THE ENTRANCE DOWN, UP OR ON EITHER SIDE.
 - F-1 ASSEMBLY AS SHOWN.
 - F-2 ASSEMBLY CONDUIT BOX ON OPPOSITE SIDE.
 - BRACKETED DIMENSIONS ARE METRIC (MILLIMETERS).
 - TOLERANCE ON PERMISSIBLE SHAFT EXTENSION RIMOUT IS .0015 T.I.R.

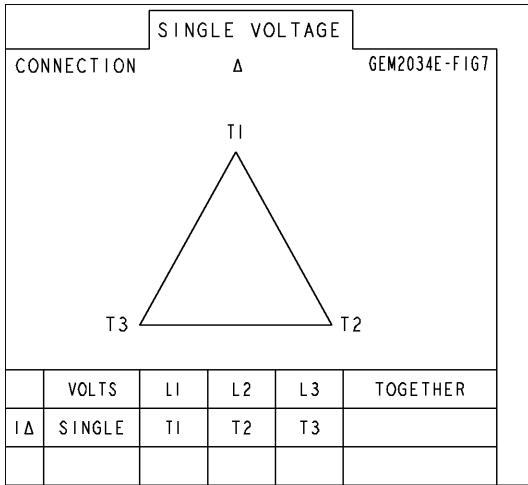


SIGNATURES		DATE	
MODEL	TEJASHI	6/29/15	
SCALE	TEJASHI	06/29/15	
DESIGN	VENKAT	06/29/15	
DATE	VENKAT	06/29/15	
SCALE	TEJASHI	06/29/15	
SCALE	0.250		
 GENERAL ELECTRIC COMPANY			
OUTLINE			
404/405 TS TEFC XSD 941			
700 CU. IN. CONDUIT BOX			
239C6400RA			
0			
SHEET 1 OF 1			

REV.	DESCRIPTION	DATE	APPROVED
239C6400RA 0			

Marks:

Connection Diagram
GEM2034E-FIG7



End shield Assembly		
Part Description	DE Side Part#	ODE Side Part#
End Shield	115E4305AA1	115E4305LL1
Bearing	235A2617AA01	235A2617AA01
Slinger/Inproseal	235A4575GS3	235A4575GS3

Fan & Fan Cover Assembly	
Part Description	Part#
Fan	159C7100AA11
Fan Cover	128D6832AA1

Conduit & Accessories Box Assembly	
Part Description	Part#
Conduit Box	118D4408AD2

Mechanical Accessories	
Part Description	Part#
Brake	
Tachometer	

