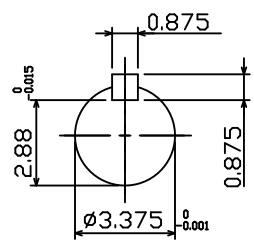
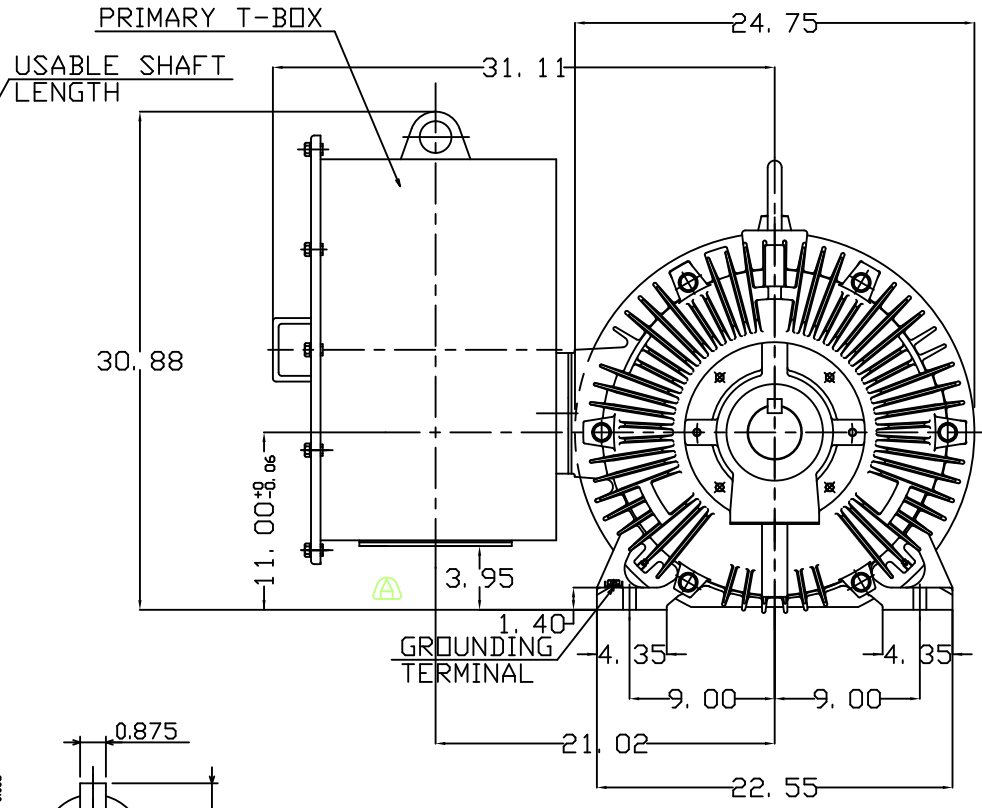
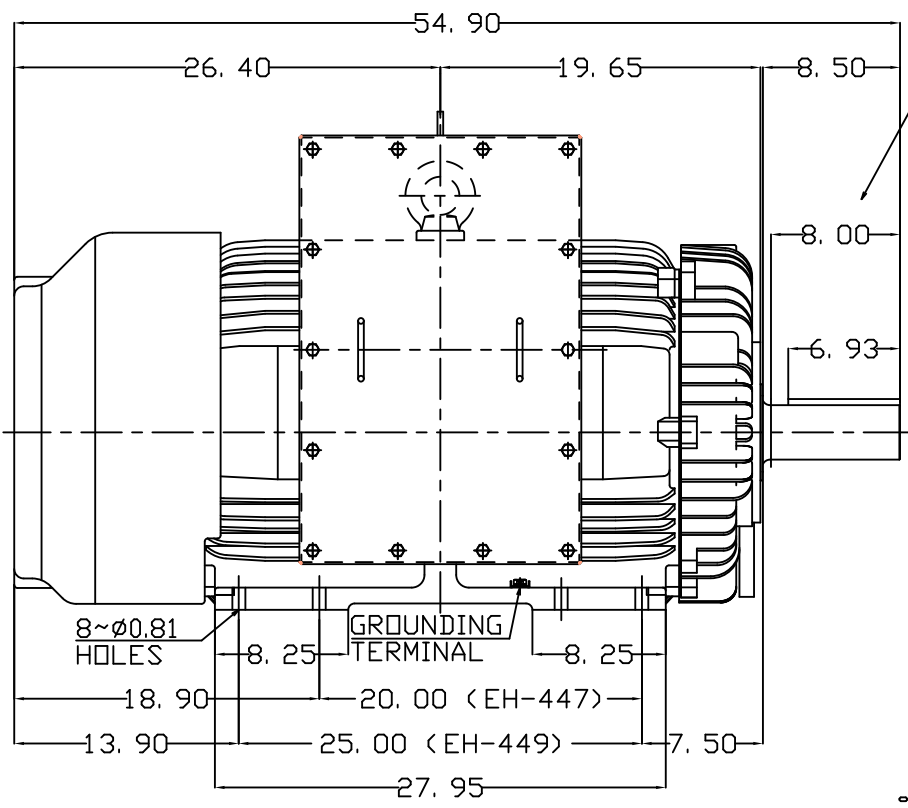


TYPE	OUTPUT		POLE	TIME RATING	VOLTAGE V	Hz	SYN.SPEED R.P.M
	HP.	kW.					
AEHH8B	250	187	6	CONT.	460	60	1200

TOTALLY ENCLOSED FAN-COOLED TYPE, SQUIRREL CAGE ROTOR



- NOTE:
- DIMENSIONS IN INCHES
 - FRAME NO. 449T
 - F CLASS INSULATION, S. F. 1. 15
 - FOR DIRECT FLEXIBLE COUPLING
 - ENCLOSURE: IP55
 - BEARING SIZE: DRIVE END 6320C3
NON-DRIVE END 6316C3
 - BOTH ENDS BEARING WITH INPRO SEAL
 - NON-SPARKING FAN
 - MOTOR APPROX. WEIGHT: 2574 lb
 - VIBRATION: VERTICAL/HORIZONTAL BELOW 0.08 IN/SEC
AXIAL BELOW 0.06 IN/SEC
 - NOISE: BELOW 83dBA AT 1 METER DISTANCE NO LOAD
 - CORROSION PROOF
 - CLASS I , DIVISION 2 , GROUP B/C/D , T3

SHAFT END
(ENLARGED VIEW)

DATE	NOV. 4, 2014	OUTLINE DIMENSIONS	
CATALOG#	HB2506	3-PHASE INDUCTION MOTOR	
R.S.V.	C.RAM	NOV 4 2014	TEC Westinghouse
DWN.	C.H.SHYU	SEP-14 -2013	
CHKD.	K.L.KOU	SEP-14 -2013	
APPD.	S.H.LIN	SEP-14 -2013	DWG NO. REV:00 31057C454970