

Product Information Packet

November 8, 2016

Data shown is for the current revision model #. Ensure your nameplate model # matches.

Model Number:	5KS324SAA305D10
Catalog Number:	M9158
Instruction Manual:	GEI-56128
Connection Diagram:	GEM2034E-FIG9
Outline Drawing:	239C6000AE

Accessory Connection Diagrams			
Bearing Thermocouple:	None	Heater:	None
RTD:	None	Thermistor:	None
Thermostat:	None	Winding Thermocouple:	None
Bearing RTD:	None		

Table of Contents

Specification	01
Performance Characteristics	02
Outline Drawing	03
Connection Drawing(s)	04
Spare parts	05



Marks:

MODEL NUMBER:	5KS324SAA305D10	Estimated Weight:	660 Lbs
Outline Drawing:	239C6000AE	Time Rating:	CONT
Connection Diagram:	GEM2034E-FIG9	Enclosure:	TEFC
Instruction Book:	GEI-56128	Encl Construction:	X\$D
Design Code:	32BD3099A	Ambient Max(°C):	40
Type:	KS	Alt Ambient Max(°C):	65
Frame:	324T	Insulation Class:	H
Phases:	3	NEMA Design:	B
Poles:	6	Nominal Efficiency:	93.0 %
Output Power:	25HP 18.5KW	Guaranteed Efficiency:	92.4
RPM:	1180	3/4 Load Efficiency:	93.4
Voltage:	230/460	KVA Code:	G
Hertz:	60	Max KVAR:	10.3
Amps - FL:	64.2/32.1	Power Factor:	78.5
Service Factor:	1.25	Bearing - DE:	6312ZC3
Alt Service Factor:	1.00	Bearing - ODE:	6312ZC3

Enclosure is Totally Enclosed Fan-Cooled

Stamped Nameplate Notes:

SF AMPS 78.3/39.2
 STAMP NP249A5564P051 AS BELOW:
 MODEL:5KS324SAA305D10 S/N: XXX
 CSA CERTIFIED CSA09.2216219 FOR EX NA IIC 200 C GC
 CL 1 ZONE2 AEX NA IIC 200C;CL 1 DIV2 GRP ABCD 200C
 IN -40C <= AMB <= 40C, 1.0 SF ON SINE-WAVE PWR
 SURF TEMP 215C AT 1.25SF ON SINE-WAVE PWR
 OR 200C VT OR 200C CT OR 200C CHP PWM CONTROL
 ALTERNATE RATING FOR PWM CONTROL 1.0SF 40C AMB
 VT 0 - 60 HZ, CT 3-60 HZ, CHP 60-90 HZ.

Additional Information:

6P - T EXTN
 346 CU IN - 3.00" NPT
 OIL RESISTANT SLEEVING ON LEADS
 F1 MOUNTING

Performance Characteristics

1st Winding 1st Connection

Design: 32BD3099A

Marks:

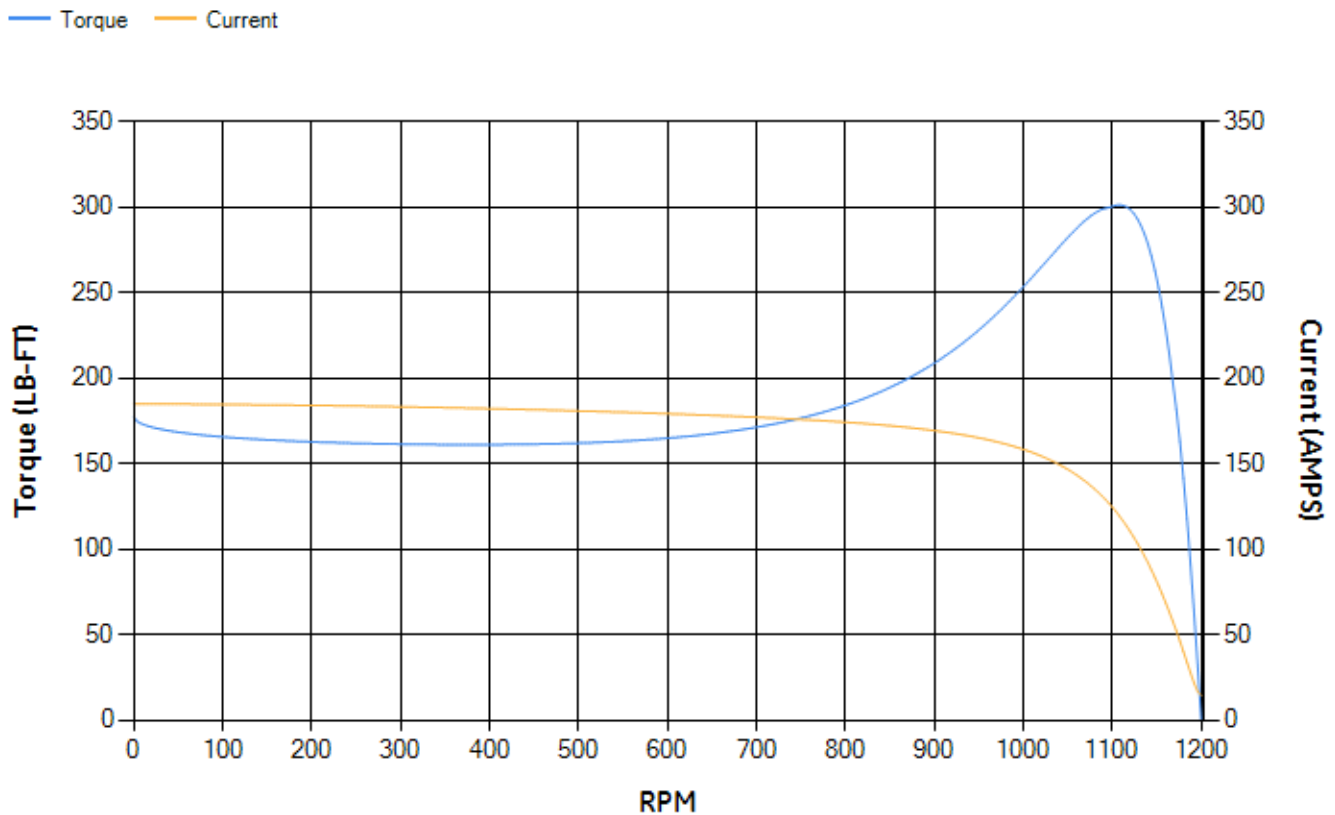
LOAD %	125.0	115.0	100.0	75.0	50.0	25.0	0.0
% EFF	92.2	92.56	93.21	93.38	92.92	89.56	0.00
% PF	81.01	80.31	78.62	73.27	62.24	40.32	4
AMPS	39.16	36.2	31.91	25.65	20.23	16.2	14.31

TORQ(FL)#FT	111.19	TORQ(LR)%FL	159.54	TORQ(BD)%FL	268.47
AMPS(LR)	184.74	PF AT START	0.33		

This motor is capable of two cold or one hot start with a maximum connected load inertia of 2445 Lb-Ft Sq (102.93 Kg-meter Sq)at 100% voltage, where the load torque varies with the square of the speed. Acceleration time with maximum inertia and the above load type is 62 seconds. Safe stall time at 100% voltage is 116 seconds cold, 75 seconds hot. Rotor inertia is 8.96 Lb-Ft Sq (0.38 Kg-meter Sq).

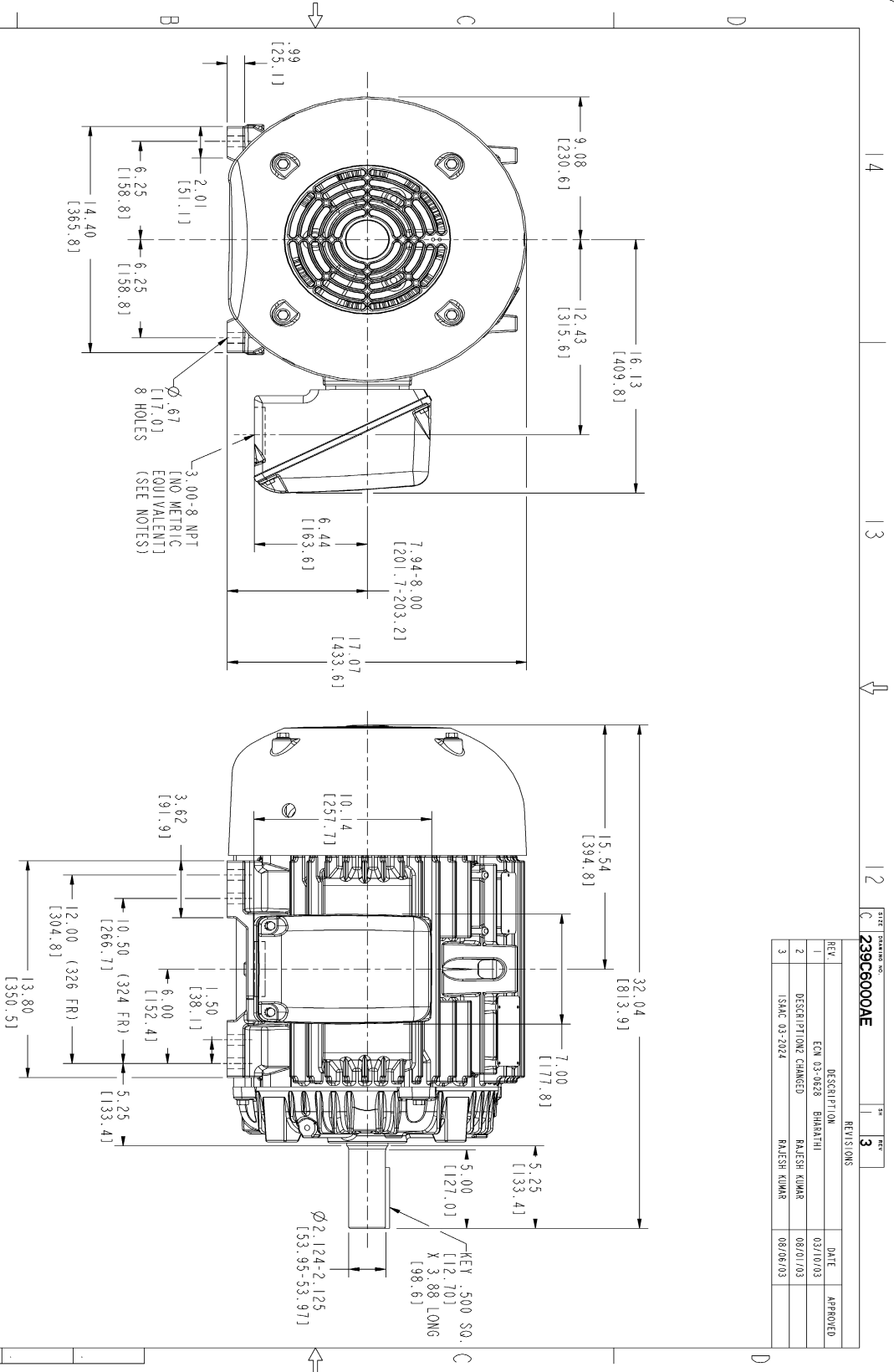
Open Circuit A-C:	0.341	Short Circuit D-C:	0.018
Short Circuit A-C:	0.022	X/R Ratio:	6.623
Stator Slots:	54	Rotor Slots:	40

Speed Torque Current Curve (First Connection, First Speed)



NAME: 103016807 OBJECT: 239C6000AE DATE: 07-Aug-03 23:25:11

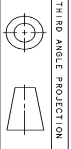
Marks:



NOTES :

1. CONDUIT BOX MAY BE PLACED WITH THE ENTRANCE DOWN, UP OR ON EITHER SIDE.
2. F-1 ASM AS SHOWN.
3. F-2 ASM HAS CONDUIT BOX ON OPPOSITE SIDE.
4. BRACKETED DIMENSIONS ARE METRIC (MILLIMETERS).

REV.	DESCRIPTION	DATE	APPROVED
1	ECN 03-0628 BHARATHI	03/10/03	
2	DESCRIPTION CHANGED	08/01/03	
3	ISSAC 03-2024	08/06/03	

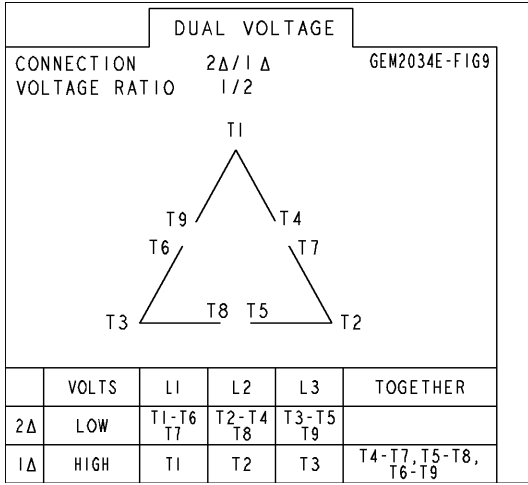


THIRD ANGLE PROJECTION

SIGNATURES	DATE	GENERAL ELECTRIC COMPANY
DESIGNER: WABRKL	03/13/02	 OUTLINE 324/326 TFC 346 CU. IN. CONDUIT BOX 239C6000AE
DRAWN: MANIYANAN	03/13/02	
CHECKED: WABRKL	03/13/02	
APPLIED PRACTICES:		
SCALE: 0.250	REF. NO:	
SHEET NO: 3		
DISTRIBUTION: MMP		

Marks:

Connection Diagram
GEM2034E-FIG9



End shield Assembly		
Part Description	DE Side Part#	ODE Side Part#
End Shield	115E4200AA1	115E4200LA1
Bearing	235A2609AA01	235A2609AA01
Slinger/Inproseal	149C4399G04	149C4399G04

Fan & Fan Cover Assembly	
Part Description	Part#
Fan	159C7000G01
Fan Cover	128D6800AA1

Conduit & Accessories Box Assembly	
Part Description	Part#
Conduit Box	149C4429AA2

Mechanical Accessories	
Part Description	Part#
Brake	
Tachometer	

