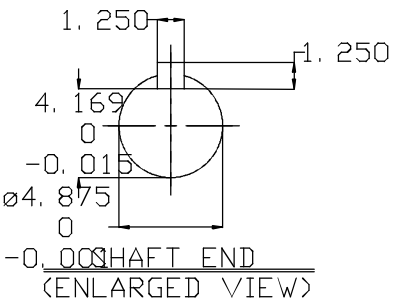
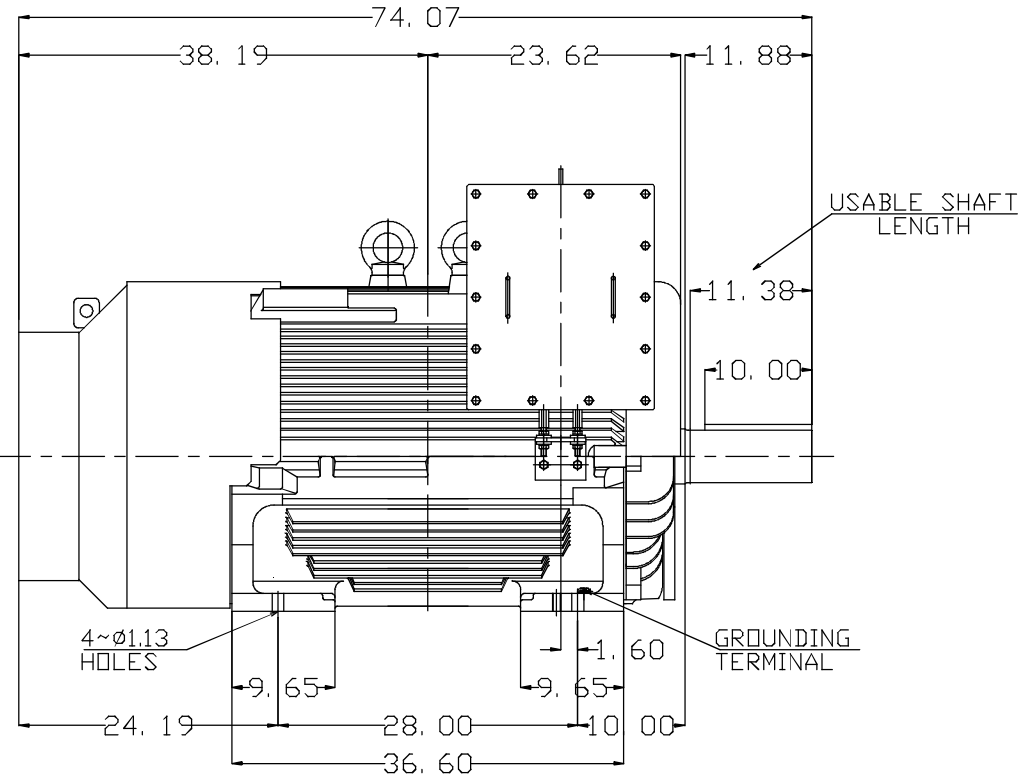
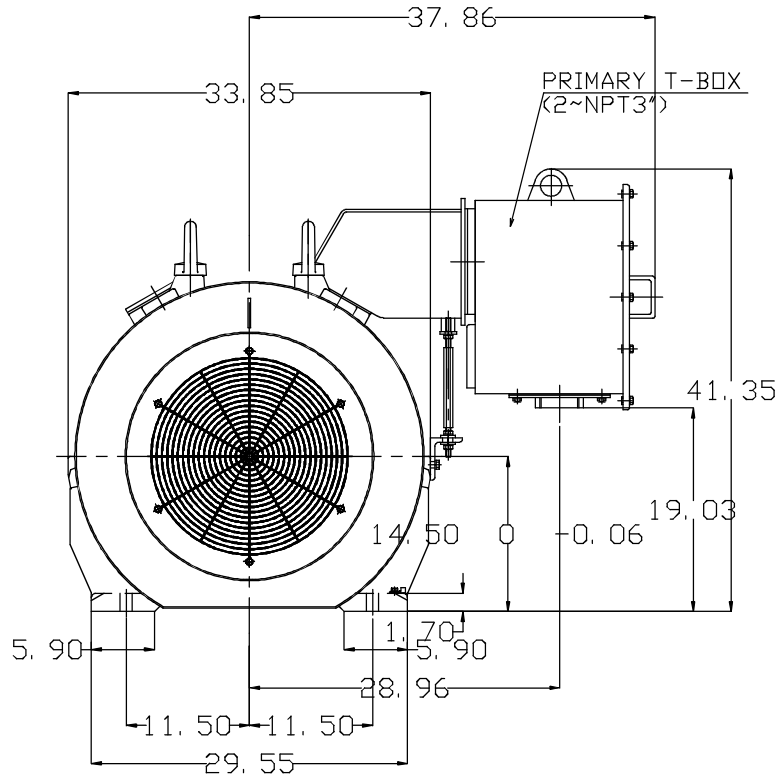


6 5 4 3 2 1

TYPE	OUTPUT		POLE	TIME RATING	VOLTAGE V	Hz	SYN.SPEED R.P.M
	HP.	KW.					
AEHE	450	336	8	CONT.	460	60	900

TOTALLY ENCLOSED FAN-COOLED TYPE, SQUIRREL-CAGE ROTOR



- NOTE:
- DIMENSIONS IN inch
  - FRAME NO. 5808C
  - F CLASS INSULATION, S.F.1.15
  - FOR BELT DRIVE APPLICATIONS
  - ENCLOSURE: IP55
  - BEARING SIZE: DRIVE-END NU326C3  
OPP. DRIVE-END 6322
  - MOTOR APPROX. WEIGHT: 5450 lb

DATE	OUTLINE DIMENSIONS	
CATALOG # E4508R	3-PHASE INDUCTION MOTOR	
DWN. Y.DU MAR-24-2014	TEC® Westinghouse	DWG NO. REV:00
CHKD. W.CHENG MAR-29-2014		4B040C041
APPD. C.SHIH MAR-29-2014		