

# Product Information Packet

November 9, 2016

Data shown is for the current revision model #. Ensure your nameplate model # matches.

<b>Model Number:</b>	<b>5KS365SAA114D7</b>
<b>Catalog Number:</b>	<b>M9830</b>
<b>Instruction Manual:</b>	GEI-56128
<b>Connection Diagram:</b>	GEM2034E-FIG7
<b>Outline Drawing:</b>	239C6200AB

<b>Accessory Connection Diagrams</b>			
<b>Bearing Thermocouple:</b>	None	<b>Heater:</b>	None
<b>RTD:</b>	None	<b>Thermistor:</b>	None
<b>Thermostat:</b>	None	<b>Winding Thermocouple:</b>	None
<b>Bearing RTD:</b>	None		

## Table of Contents

Specification	01
Performance Characteristics	02
Outline Drawing	03
Connection Drawing(s)	04
Spare parts	05



**Marks:**

<b>MODEL NUMBER:</b>	<b>5KS365SAA114D7</b>	<b>Estimated Weight:</b>	1030 Lbs
<b>Outline Drawing:</b>	239C6200AB	<b>Time Rating:</b>	CONT
<b>Connection Diagram:</b>	GEM2034E-FIG7	<b>Enclosure:</b>	TEFC
<b>Instruction Book:</b>	GEI-56128	<b>Encl Construction:</b>	X\$D
<b>Design Code:</b>	36BD0118B	<b>Ambient Max(°C):</b>	40
<b>Type:</b>	KS	<b>Alt Ambient Max(°C):</b>	60
<b>Frame:</b>	365TS	<b>Insulation Class:</b>	H
<b>Phases:</b>	3	<b>NEMA Design:</b>	B
<b>Poles:</b>	2	<b>Nominal Efficiency:</b>	94.5 %
<b>Output Power:</b>	75HP 55.5KW	<b>Guaranteed Efficiency:</b>	94.1
<b>RPM:</b>	3575	<b>3/4 Load Efficiency:</b>	--
<b>Voltage:</b>	575	<b>KVA Code:</b>	G
<b>Hertz:</b>	60	<b>Max KVAR:</b>	20.2
<b>Amps - FL:</b>	68.3	<b>Power Factor:</b>	87.0
<b>Service Factor:</b>	1.15	<b>Bearing - DE:</b>	6314ZC3
<b>Alt Service Factor:</b>	1.00	<b>Bearing - ODE:</b>	6314ZC3

**Enclosure is Totally Enclosed Fan-Cooled**

**Stamped Nameplate Notes:**

STAMP NP249A5564P051 AS BELOW:  
 MODEL:5KS365SAA114D7 S/N: XXX  
 CSA CERTIFIED CSA09.2216219 FOR EX NA IIC 200 C GC  
 CL 1 ZONE2 AEX NA IIC 200C;CL 1 DIV2 GRP ABCD 200C  
 IN -40C <= AMB <= 40C, 1.0 SF ON SINE-WAVE PWR  
 SURF TEMP 215C AT 1.15SF ON SINE-WAVE PWR  
 OR 200C VT OR 230C CT OR ---C CHP PWM CONTROL  
 ALTERNATE RATING FOR PWM CONTROL 1.0SF 40C AMB  
 VT 0 - 60 HZ, CT 15-60 HZ, CHP -- HZ.

**Additional Information:**

2P - TS EXTN  
 346 CU IN - 3.00" NPT  
 OIL RESISTANT SLEEVING ON LEADS  
 F1 MOUNTING  
 TEFC XSD ULTRA STOCK 10/19/2016  
 ENGINEERED BY: BALASUBRAMANIANH/BILURP

**Performance Characteristics**

1st Winding 1st Connection

**Design: 36BD0118B**

**Marks:**

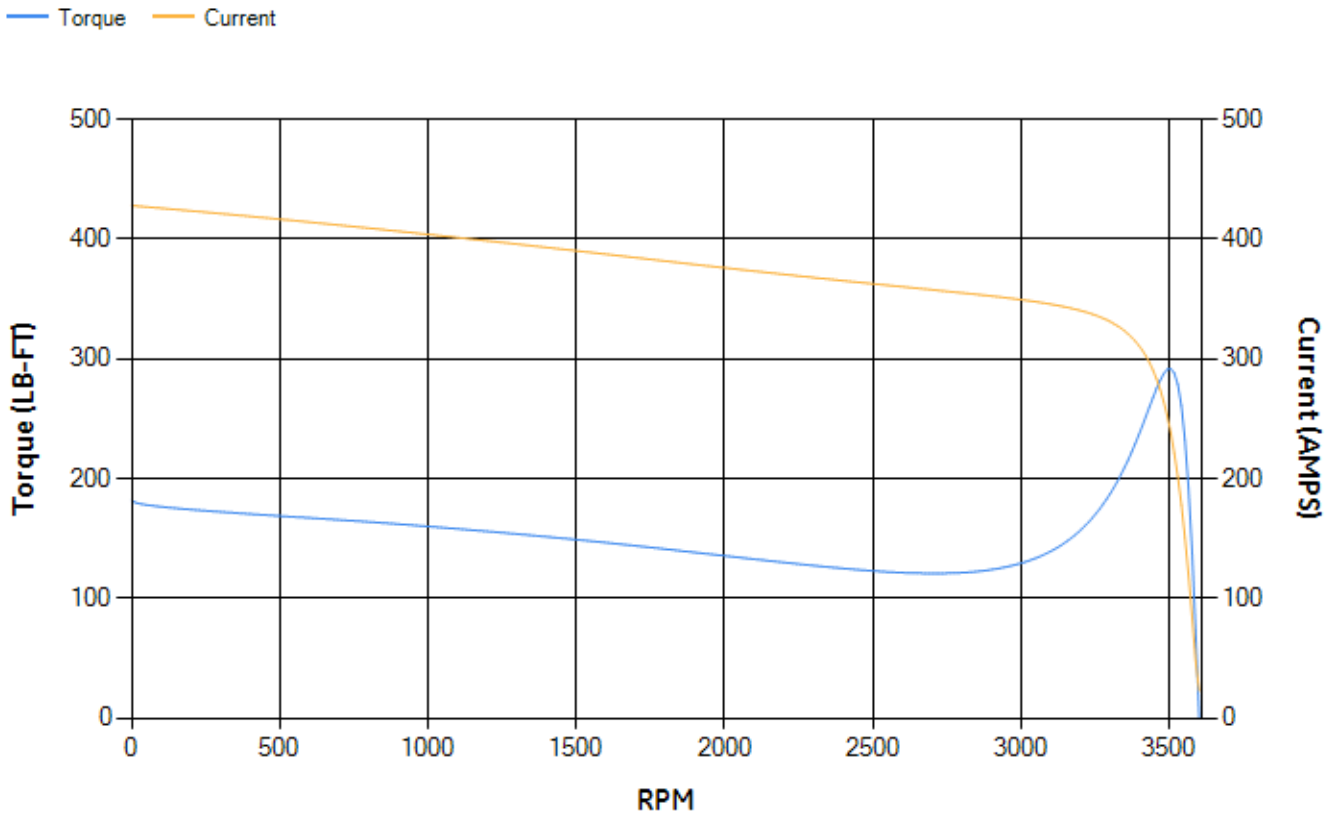
LOAD %	125.0	115.0	100.0	75.0	50.0	25.0	0.0
% EFF	94.4	94.62	95.08	95.05	94.58	91.81	0.00
% PF	88.01	87.76	86.96	83.86	75.92	54.63	4.61
AMPS	84.49	77.77	67.79	52.84	39.1	27.99	22.51

TORQ(FL)#FT	110.2	TORQ(LR)%FL	164.95	TORQ(BD)%FL	264.57
AMPS(LR)	427.97	PF AT START	0.33		

This motor is capable of two cold or one hot start with a maximum connected load inertia of 163 Lb-Ft Sq (6.86 Kg-meter Sq)at 100% voltage, where the load torque varies with the square of the speed. Acceleration time with maximum inertia and the above load type is 17 seconds. Safe stall time at 100% voltage is 41 seconds cold, 20 seconds hot. Rotor inertia is 9.07 Lb-Ft Sq (0.38 Kg-meter Sq).

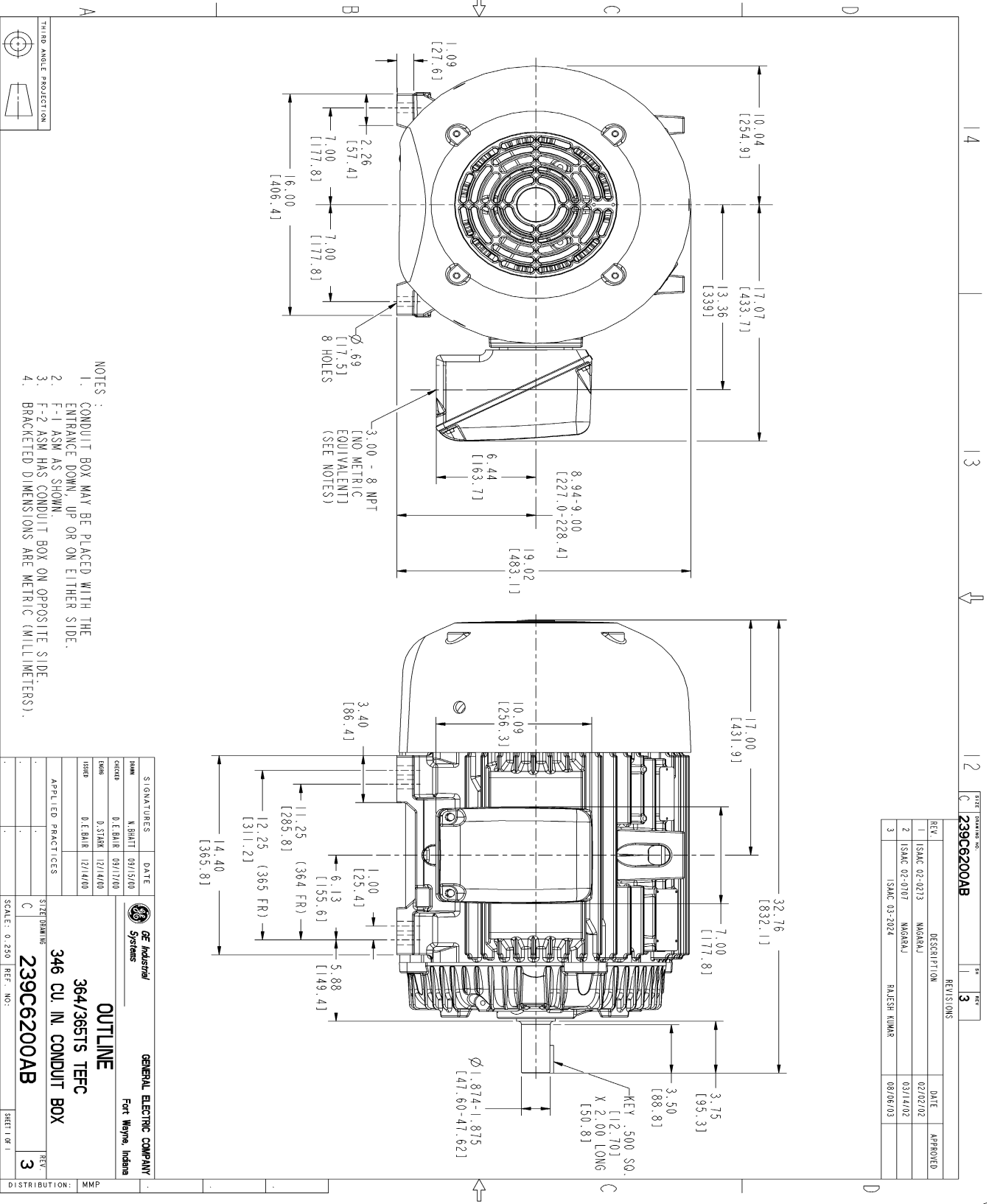
Open Circuit A-C:	1.04	Short Circuit D-C:	0.022
Short Circuit A-C:	0.05	X/R Ratio:	8.467
Stator Slots:	48	Rotor Slots:	38

**Speed Torque Current Curve (First Connection, First Speed)**



NAME: 103016807 OBJECT: 239C6200AB DATE: 07-Aug-03 23:40:52

Marks:



REV.	DESCRIPTION	DATE	APPROVED
1	ISAC 02-0213 MAGRAJ	02/02/02	
2	ISAC 02-0707 MAGRAJ	03/14/02	
3	ISAC 03-2024 RAJESH KUMAR	08/06/03	

NOTES :

1. CONDUIT BOX MAY BE PLACED WITH THE ENTRANCE DOWN, UP OR ON EITHER SIDE.
2. F-1 ASM AS SHOWN.
3. F-2 ASM HAS CONDUIT BOX ON OPPOSITE SIDE.
4. BRACKETED DIMENSIONS ARE METRIC (MILLIMETERS).

SIGNATURES	DATE	GENERAL ELECTRIC COMPANY
DESIGNED BY: K. BHATT	09/15/00	 <b>OUTLINE</b> 364/365TS TFC 346 CU. IN. CONDUIT BOX 239C6200AB
CHECKED BY: D. E. BAIR	09/17/00	
DRAWN BY: D. STARK	12/14/00	
APPLIED PRACTICES		
SCALE: 0.250	REF. NO.:	
SHEET NO. 1		REV. 3
DISTRIBUTION: MMP		

Marks:

**Connection Diagram**  
**GEM2034E-FIG7**



End shield Assembly		
Part Description	DE Side Part#	ODE Side Part#
End Shield	115E4250AA1	115E4250LK1
Bearing	235A2616AA01	235A2616AA01
Slinger/Inproseal	149C4399G05	149C4399G05

Fan & Fan Cover Assembly	
Part Description	Part#
Fan	159C6700G02
Fan Cover	128D6810AA1

Conduit & Accessories Box Assembly	
Part Description	Part#
Conduit Box	149C4429AA2

Mechanical Accessories	
Part Description	Part#
Brake	
Tachometer	