

Product Information Packet

November 9, 2016

Data shown is for the current revision model #. Ensure your nameplate model # matches.

Model Number:	5KS445LAA304D
Catalog Number:	M7963
Instruction Manual:	GEI-56128
Connection Diagram:	GEM2034E-FIG7
Outline Drawing:	239CC600AA

Accessory Connection Diagrams			
Bearing Thermocouple:	None	Heater:	None
RTD:	None	Thermistor:	None
Thermostat:	None	Winding Thermocouple:	None
Bearing RTD:	None		

Table of Contents	
Specification	01
Performance Characteristics	02
Outline Drawing	03
Connection Drawing(s)	04

Marks:

MODEL NUMBER:	5KS445LAA304D	Estimated Weight:	1880 Lbs
Outline Drawing:	239CC600AA	Time Rating:	CONT
Connection Diagram:	GEM2034E-FIG7	Enclosure:	TEFC
Instruction Book:	GEI-56128	Encl Construction:	SD
Design Code:	44BD3071B	Ambient Max(°C):	40
Type:	KS	Alt Ambient Max(°C):	--
Frame:	445T	Insulation Class:	F
Phases:	3	NEMA Design:	A
Poles:	6	Nominal Efficiency:	95.0 %
Output Power:	125HP 92.5KW	Guaranteed Efficiency:	94.1
RPM:	1190	3/4 Load Efficiency:	95.0
Voltage:	575	KVA Code:	H
Hertz:	60	Max KVAR:	47.5
Amps - FL:	122.0	Power Factor:	80.5
Service Factor:	1.15	Bearing - DE:	6318ZC3S0
Alt Service Factor:	--	Bearing - ODE:	6318ZC3S0

Enclosure is Totally Enclosed Fan-Cooled

Stamped Nameplate Notes:

INVERTER DUTY PER NEMA MG1 PART 31
 ALTERNATE RATING FOR PWM CONTROL:1.0SF 40C AMBIENT
 VAR TORQUE RANGE 0-60 HZ

Additional Information:

6P - T EXTN
 700 CU IN - 3.00" NPT
 OIL RESISTANT SLEEVING ON LEADS
 F1 MOUNTING
 VIBRATION LIMIT 0.15 INCH PER SEC

Performance Characteristics

1st Winding 1st Connection

Design: 44BD3071B

Marks:

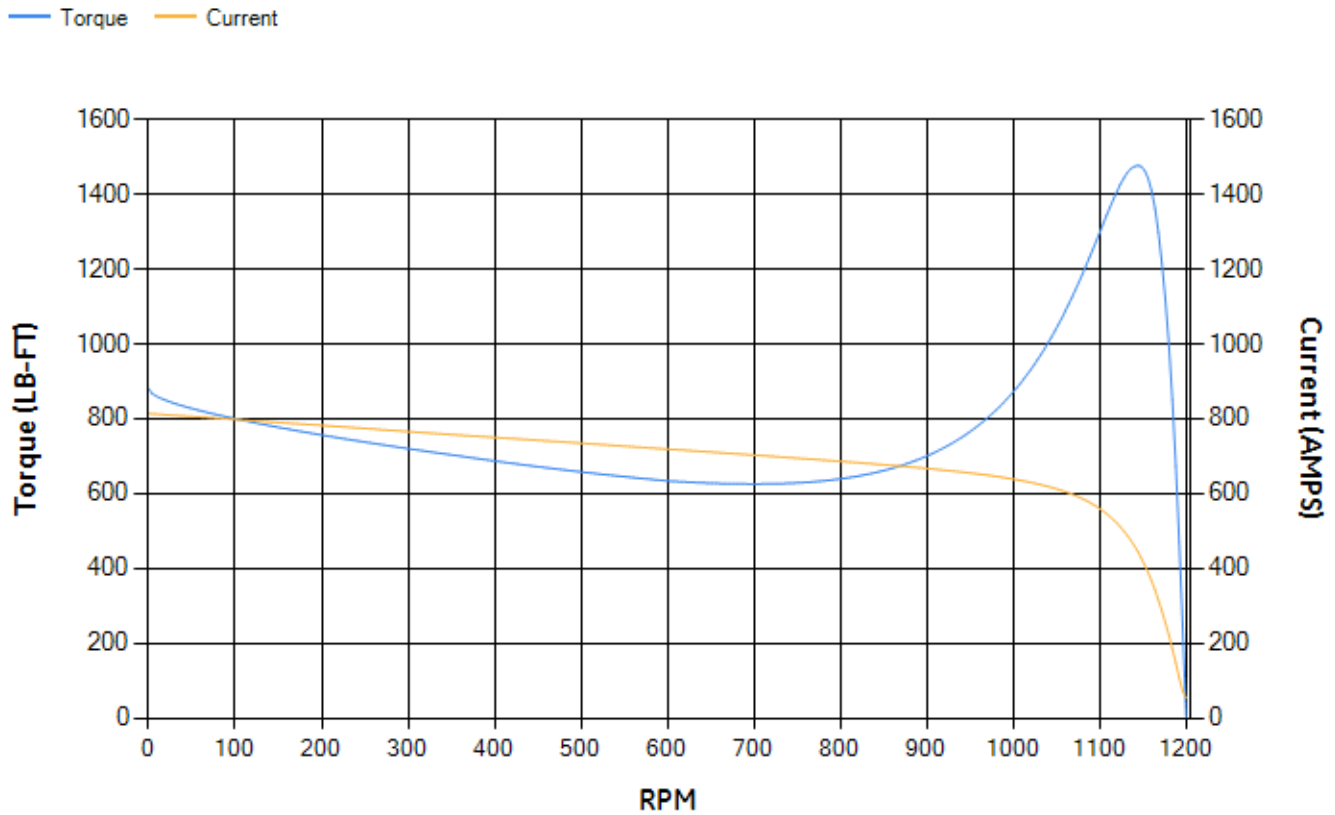
LOAD %	125.0	115.0	100.0	75.0	50.0	25.0	0.0
% EFF	94.36	94.58	95.05	95.04	94.58	91.81	0.00
% PF	83	82.34	80.76	75.71	64.94	42.43	3.36
AMPS	149.38	138.2	121.92	97.55	76.19	60.07	52.82

TORQ(FL)#FT	551.81	TORQ(LR)%FL	159.45	TORQ(BD)%FL	266.85
AMPS(LR)	813.53	PF AT START	0.31		

This motor is capable of two cold or one hot start with a maximum connected load inertia of 3919 Lb-Ft Sq (164.99 Kg-meter Sq)at 100% voltage, where the load torque varies with the square of the speed. Acceleration time with maximum inertia and the above load type is 26 seconds. Safe stall time at 100% voltage is 61 seconds cold, 31 seconds hot. Rotor inertia is 78.74 Lb-Ft Sq (3.31 Kg-meter Sq).

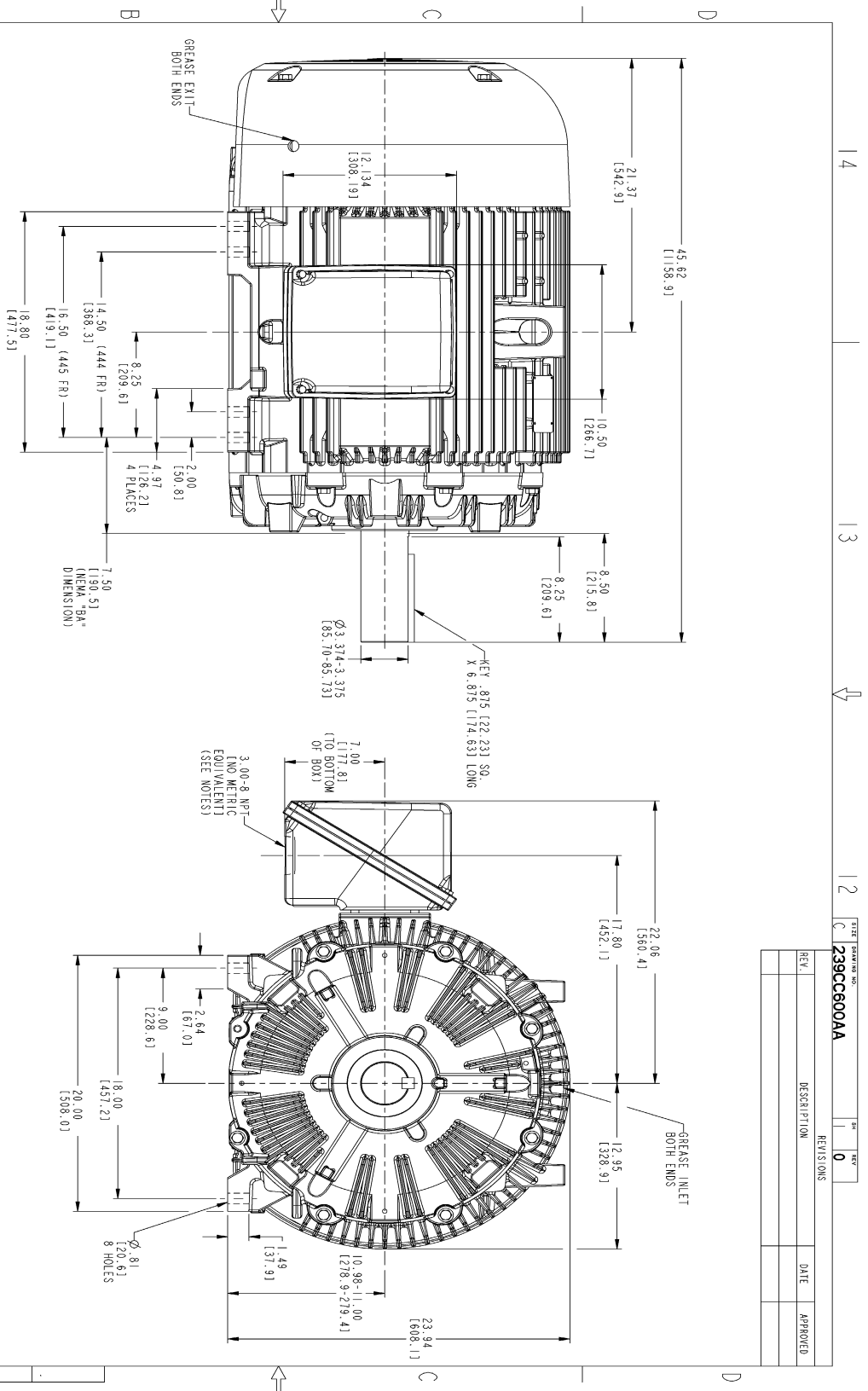
Open Circuit A-C:	0.643	Short Circuit D-C:	0.026
Short Circuit A-C:	0.045	X/R Ratio:	9.989
Stator Slots:	72	Rotor Slots:	58

Speed Torque Current Curve (First Connection, First Speed)



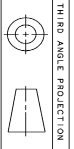
NAME:501352727 OBJECT:239CC600AA DATE:31-Jul-07 13:50:49

Marks:



NOTES:

1. CONDUIT BOX MAY BE PLACED WITH THE ENTRANCE DOWN, UP OR ON EITHER I
2. F-1 ASSEMBLY AS SHOWN.
3. F-2 ASSEMBLY CONDUIT BOX ON OPPOSITE SIDE.
4. BRACKETED DIMENSIONS ARE METRIC (MILLIMETERS).



REV.	DESCRIPTION	DATE	APPROVED

DESIGNING NO.	REV.	REV.
239CC600AA	10	
REVISIONS		

SIGNATURES	DATE	GENERAL ELECTRIC COMPANY Fort Wayne, Indiana
DESIGNED	07/27/07	
CHECKED	07/27/07	
ISSUED	07/27/07	
APPLIED PRACTICES		

OUTLINE
444/445 T TEFC ESP
700 CU. IN. CONDUIT BOX
239CC600AA

SCALE: 0.200 REF. NO: 0

DISTRIBUTION: MMP

Marks:

Connection Diagram
GEM2034E-FIG7

