

Product Information Packet

November 8, 2016

Data shown is for the current revision model #. Ensure your nameplate model # matches.

Model Number:	5KS254STE205RG3
Catalog Number:	M7564
Instruction Manual:	GEI-M1031
Connection Diagram:	GEM2034E-FIG210
Outline Drawing:	358B6272AC

Accessory Connection Diagrams			
Bearing Thermocouple:	None	Heater:	None
RTD:	None	Thermistor:	None
Thermostat:	None	Winding Thermocouple:	None
Bearing RTD:	None		

Table of Contents	
Specification	01
Performance Characteristics	02
Outline Drawing	03
Connection Drawing(s)	04

Marks:

MODEL NUMBER:	5KS254STE205RG3	Estimated Weight:	277 Lbs
Outline Drawing:	358B6272AC	Time Rating:	CONT
Connection Diagram:	GEM2034E-FIG210	Enclosure:	TEFC
Instruction Book:	GEI-M1031	Encl Construction:	SD
Design Code:	25AD1014A	Ambient Max(°C):	40
Type:	KS	Alt Ambient Max(°C):	--
Frame:	254T	Insulation Class:	F
Phases:	3	NEMA Design:	A
Poles:	4	Nominal Efficiency:	92.4 %
Output Power:	15HP 11.1KW	Guaranteed Efficiency:	91.0
RPM:	1765	3/4 Load Efficiency:	93.0
Voltage:	230/460	KVA Code:	H
Hertz:	60	Max KVAR:	4.4
Amps - FL:	36/18	Power Factor:	84.5
Service Factor:	1.15	Bearing - DE:	6310ZZ
Alt Service Factor:	--	Bearing - ODE:	6208ZZ

Enclosure is Totally Enclosed Fan-Cooled

Stamped Nameplate Notes:

USABLE AT 200V @ 15 HP,40.6 AMPS @ 1.0 SF

LRA: 244.2/122.1

50HZ DATA: 10 HP,200/400V,32.2/16.1 AMPS @ 1.15 SF

50HZ DATA: 15 HP,200/400V,41.2/20.6 AMPS @ 1.00 SF

GREASE TYPE: SHELL ALVANIA R3 LITHIUM GREASE

Additional Information:

CONDUIT BOX VOLUME (CU IN): 100.5

CONDUIT BOX MATERIAL: CAST IRON

INVERTER DUTY PER NEMA MG1 PART 31

FOR VARIABLE TORQUE LOADS

EXT MNT AEGIS SGR

BAM 1/12



Performance Characteristics

1st Winding 1st Connection

Design: 25AD1014A

Marks:

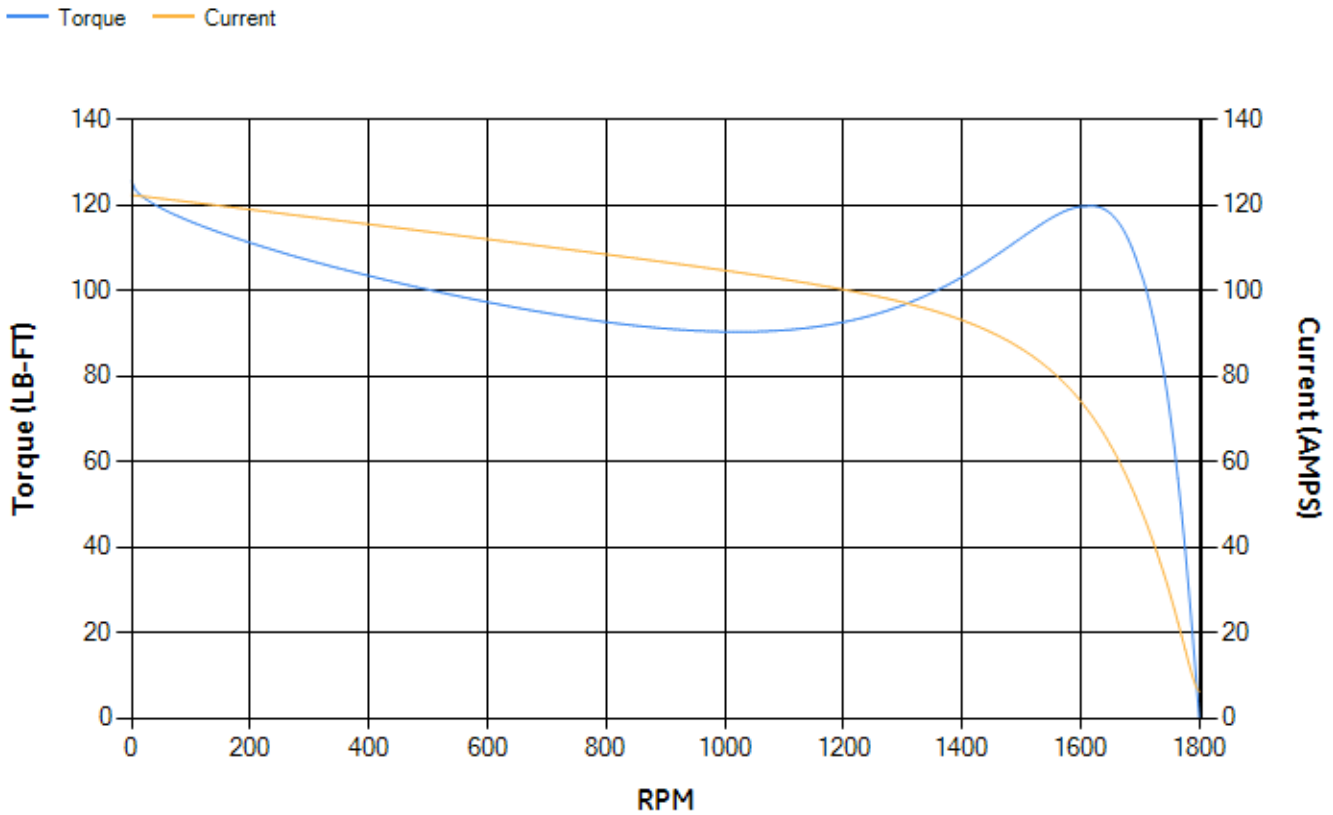
LOAD %	125.0	115.0	100.0	75.0	50.0	25.0	0.0
% EFF	91.7	92.1	92.79	93.02	92.56	89.09	0.00
% PF	85.65	85.42	84.6	81.28	73.03	52.16	6.08
AMPS	22.34	20.52	17.89	13.93	10.38	7.55	6.11

TORQ(FL)#FT	44.57	TORQ(LR)%FL	281.65	TORQ(BD)%FL	266.89
AMPS(LR)	122.3	PF AT START	0.44		

This motor is capable of two cold or one hot start with a maximum connected load inertia of 622 Lb-Ft Sq (26.19 Kg-meter Sq)at 100% voltage, where the load torque varies with the square of the speed. Acceleration time with maximum inertia and the above load type is 42 seconds. Safe stall time at 100% voltage is 71 seconds cold, 56 seconds hot. Rotor inertia is 2.02 Lb-Ft Sq (0.09 Kg-meter Sq).

Open Circuit A-C:	0.416	Short Circuit D-C:	0.016
Short Circuit A-C:	0.018	X/R Ratio:	5.974
Stator Slots:	48	Rotor Slots:	40

Speed Torque Current Curve (First Connection, First Speed)

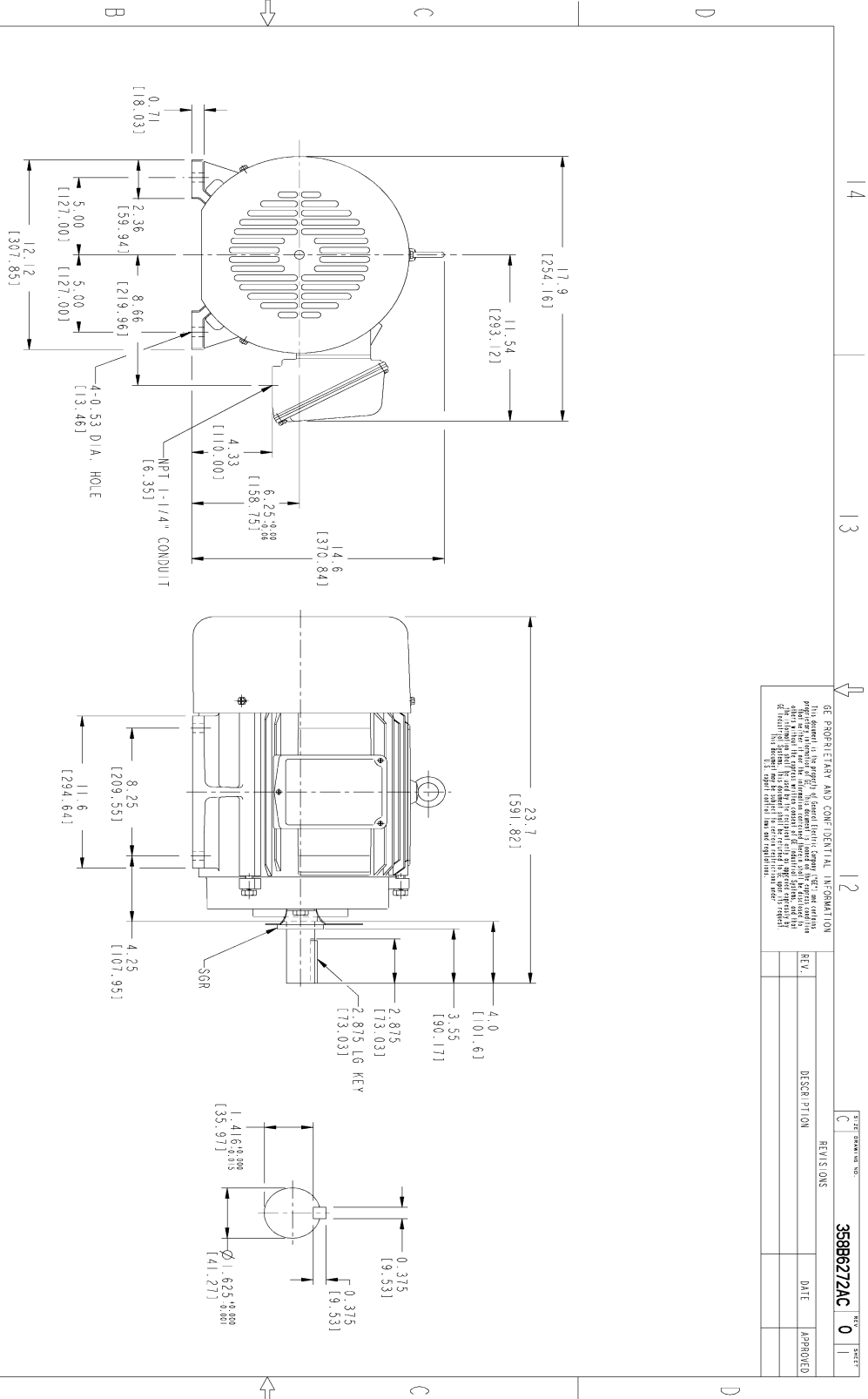


Marks:

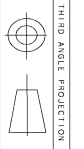
GE PROPRIETARY AND CONFIDENTIAL INFORMATION

This document is the property of General Electric Company ("GE") and contains information that is confidential and/or proprietary to GE. It is intended for internal use only. It is not to be distributed, copied, or otherwise used without the express written permission of GE. If you are not an authorized user, you should not have received this document. If you have received this document in error, please notify the sender immediately. This document is not to be used for any other purpose without the express written permission of GE. GE reserves the right to change specifications without notice.

REV.	DESCRIPTION	DATE	APPROVED
0			



- NOTES :
1. DIMENSIONS ARE IN INCHES.
 2. F-1 ASM AS SHOWN.
 3. F-2 ASM - HAS CONDUIT BOX ON OPPOSITE SIDE.
 4. BRACKETED DIMENSIONS ARE METRIC (MILLIMETERS)
 5. ICA11, IP54, IMB34 APPLY



THIRD ANGLE PROJECTION

SIGNATURES		DATE	
MODEL	SHIMAKI	06/29/11	
DRAWN	YENKAI J	06/29/11	
CHECKED	YENKAI J	06/29/11	
DESIGN	YENKAI J	06/29/11	
QUALITY	SHIMAKI	06/29/11	
ISSUED	SHIMAKI	06/29/11	

SCALE: DRAWING SCALE

358B6272AC

0

SHEET 1 OF 1

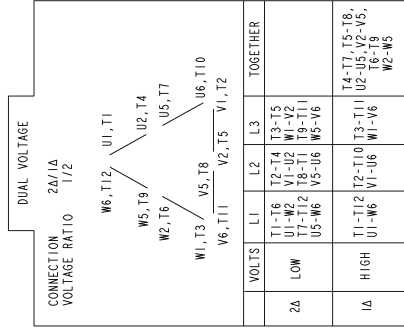
GE Motors GENERAL ELECTRIC COMPANY

OUTLINE

FTD - 254T TEFC CE MARK WITH SGR
1005 CU IN CONDUIT BOX

Marks:

Connection Diagram
GEM2034E-FIG210



NAME:501452353 OBJECT:GEM2034E-FIG210 DATE:25-Feb-08 14:03:35