

Product Information Packet

May 26, 2017

Data shown is for the current revision model #. Ensure your nameplate model # matches.

Model Number:	5KAF364SAA223A
Catalog Number:	M9313
Instruction Manual:	GEI-56128
Connection Diagram:	GEM2034E-FIG9
Outline Drawing:	239C7200AA

Accessory Connection Diagrams

Bearing Thermocouple:	None	Heater:	None
RTD:	None	Thermistor:	None
Thermostat:	None	Winding Thermocouple:	None
Bearing RTD:	None		

Table of Contents

Specification	01
Performance Characteristics	02
Outline Drawing	03
Connection Drawing(s)	04



Marks:

MODEL NUMBER:	5KAF364SAA223A		
Outline Drawing:	239C7200AA	Service Factor:	1.15
Connection Diagram:	GEM2034E-FIG9	Alt Service Factor:	1.00
Instruction Book:	GEI-56128	ASD Type:	
Design Code:	36BD1128A	Time Rating:	CONT
Type:	KAF	Enclosure:	TEBC
Frame:	364T	Encl Construction:	A\$D
Phases:	3	Ambient Max (°C):	40
Poles:	4	Alt Ambient Max(°C):	65
Output Power:	60HP 44.4KW	Insulation Class:	H
Output Power (2):		NEMA Design:	--
Output Power (3):		Nominal Efficiency:	95.0 %
RPM:	1785	Guaranteed Efficiency:	94.1 %
RPM (2):		3/4 Load Efficiency:	95.2 %
RPM (3):		KVA Code:	G
Voltage:	230/460	Max KVAR:	18.1
Voltage (2):		Power Factor:	85.5
Voltage (3):		Service Factor SINE:	
Hertz:	60	Service Factor ASD:	
Hertz – 2:		Min Supply Wires:	75 C
Hertz – 3:		IP:	55
Amps – FL:	138.2/69.1	Vibration Limit:	--
Amps – FL- 2:		Bearing Lubrication:	MOBIL POLYREX EM
Amps - FL- 3:		Bearing - DE:	6314ZC3
Speed Range RPM:	-	Bearing - ODE:	6314ZC3
Const HP RPM:	-	Estimated Weight:	960 Lbs

Stamped Nameplate Notes:

ALTERNATE RATING INVERTER DUTY 1.0 SF 40C AMBIENT
 SUITABLE FOR CONSTANT TORQUE;PWM OPERATION;0-60HZ
 THERMOSTAT LEADS PC-PC TRIP

Additional Information:

4P - T EXTN
 346 CU IN - 3.00" NPT
 E/S GROUND BOLT MTD ON DE C/BOX SIDE NEAR FOOT
 OIL RESISTANT SLEEVING ON LEADS
 TACH PROVISION MOTOR
 N.C. TRIP TSTAT LDS TO MAIN CONDUIT BOX
 PAINTED ODE ACCESSORY RABBET
 SHAFT GROUND RING #235A4970AG6 MOUNTED ON
 DE BEARING CAP

BLOWER MOTOR 208-230/460V, 1.2/0.6AMPS, 1/3HP
BLOWER MOTOR 60HZ, RPM 3450

Performance Characteristics

1st Winding 1st Connection

Design: 36BD1128A

Marks:

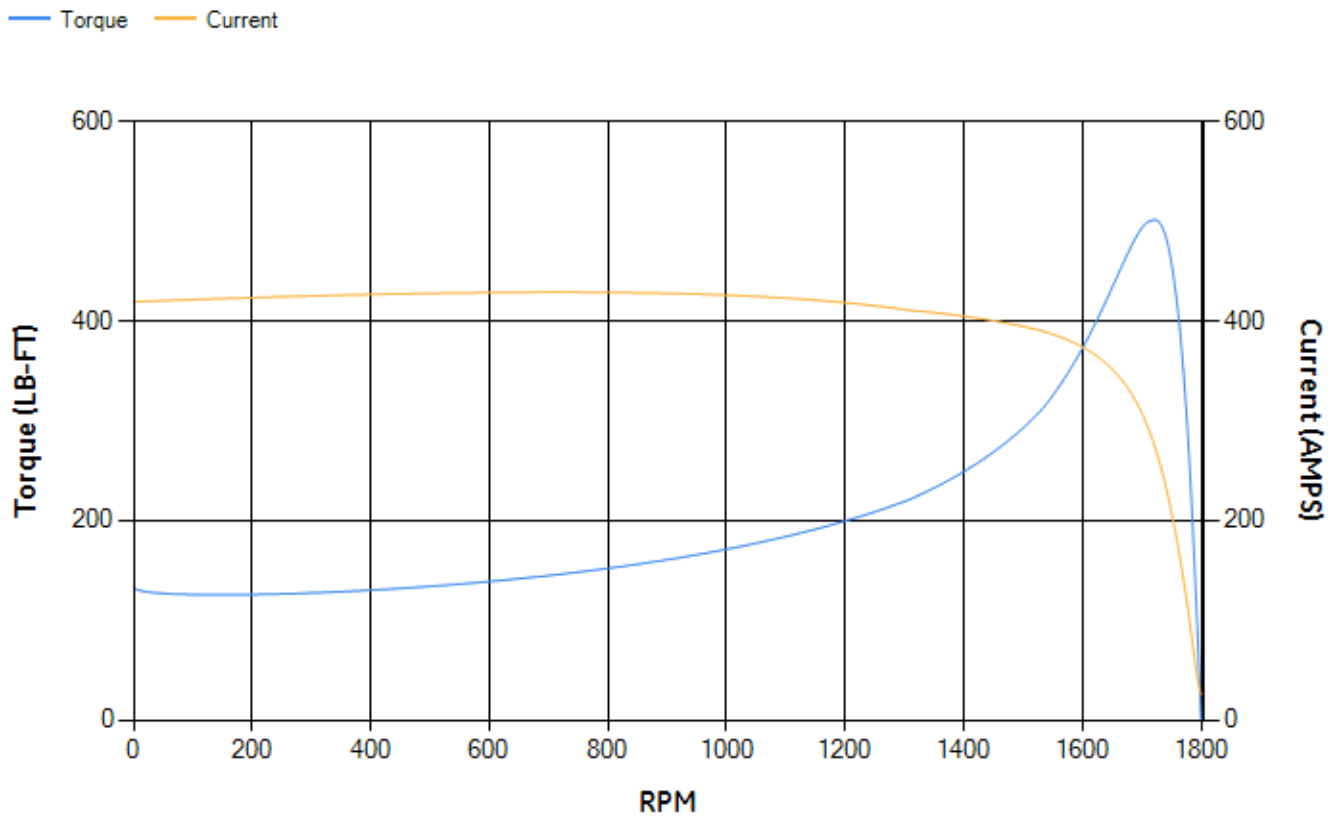
LOAD %	125.0	115.0	100.0	75.0	50.0	25.0	0.0
% EFF	94.01	94.33	94.96	95.25	95.23	93.42	0.00
% PF	87	86.56	85.43	81.52	72.3	49.75	2.93
AMPS	85.83	79.09	69.06	54.24	40.78	30.2	25.22

TORQ(FL)#FT	177.07	TORQ(LR)%FL	75.3	TORQ(BD)%FL	282.37
AMPS(LR)	419.15	PF AT START	0.2		

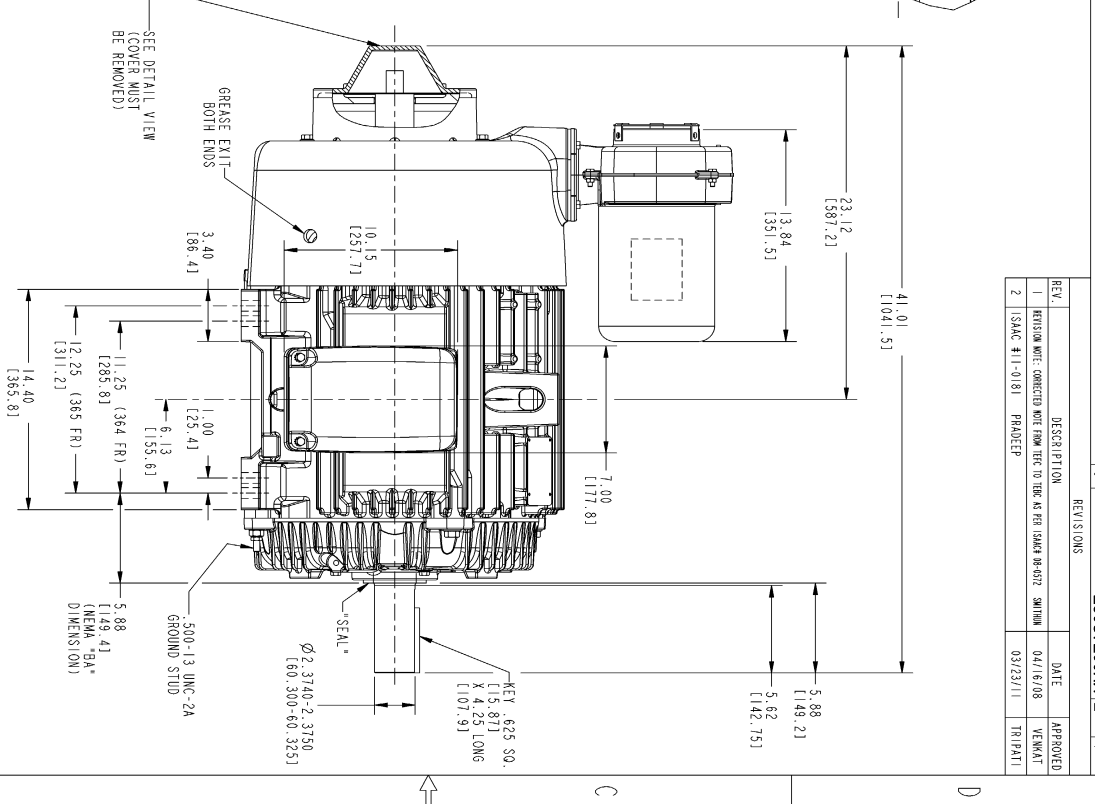
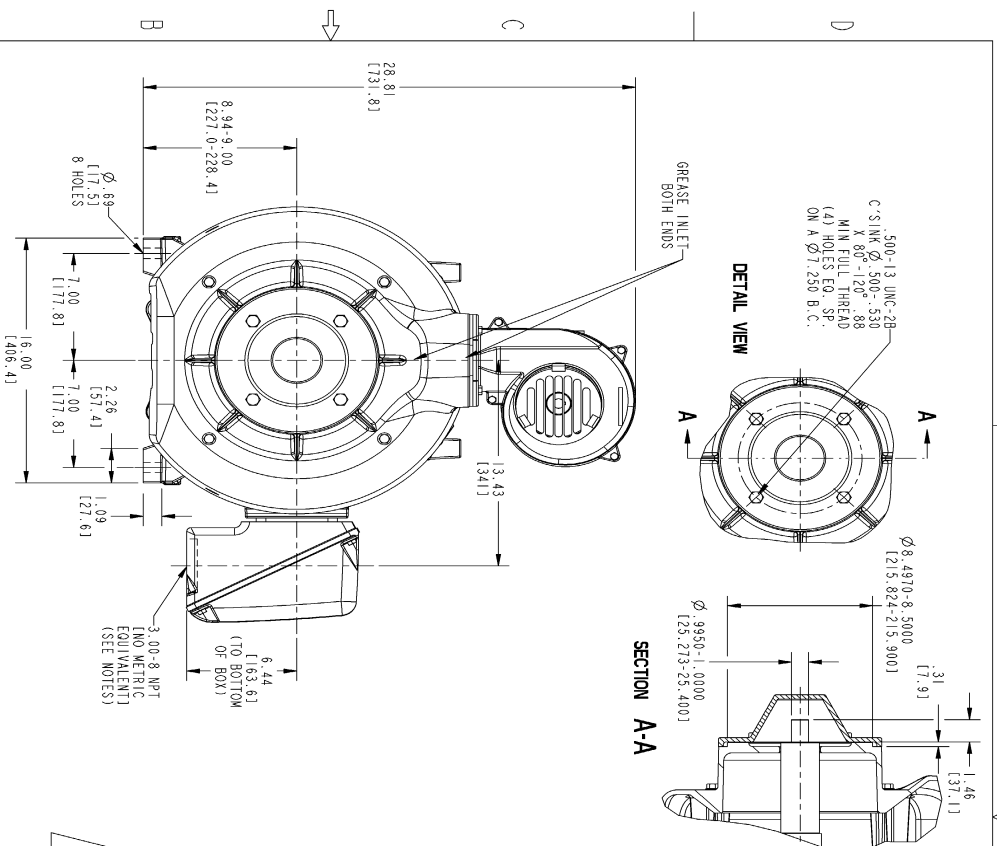
This motor is capable of two cold or one hot start with a maximum connected load inertia of 886 Lb-Ft Sq (37.3 Kg-meter Sq)at 100% voltage, where the load torque varies with the square of the speed. Acceleration time with maximum inertia and the above load type is 37 seconds. Safe stall time at 100% voltage is 181 seconds cold, 62 seconds hot. Rotor inertia is 11.72 Lb-Ft Sq (0.49 Kg-meter Sq).

Open Circuit A-C:	0.601	Short Circuit D-C:	0.019
Short Circuit A-C:	0.031	X/R Ratio:	7.33
Stator Slots:	60	Rotor Slots:	50

Speed Torque Current Curve (First Connection, First Speed)



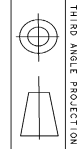
Marks:



- NOTES :
1. CONDUIT BOX MAY BE PLACED WITH THE ENTRANCE DOWN, UP OR ON EITHER SIDE.
 2. F-1 ASN AS SHOWN.
 3. F-2 ASN HAS CONDUIT BOX ON OPPOSITE SIDE.
 4. BRACKETED DIMENSIONS ARE METRIC (MILLIMETERS).

REV.	DESCRIPTION	DATE	APPROVED
1	REVISION NOTE: CORRECTED NOTE FROM REF TO TYPICAL RE-4322	04/16/08	VENKAT
2	ISAC #1-0181 PHASED	03/23/11	TRIPATI

MODEL	SIGNATURES	DATE	TITLE
5KAF364SAA223A			
DETAIL	SMITH	04/09/08	OUTLINE
CHECKED	ADHARAYANA	04/09/08	364/365 T TEBC ASD
DESIGN			
QUALITY			
ISSUED	SMITH	04/09/08	364 CU. IN. CBOX, PROV. FOR TACH. BLOWER KIT
SIZE			DRAWING
SCALE			239C7200AA
REF. NO.			2



1 4 1 3 1 2 1 1

SHEET 1 OF 1

Marks:

Connection Diagram
GEM2034E-FIG9

