

# Product Information Packet

January 12, 2017

Data shown is for the current revision model #. Ensure your nameplate model # matches.

<b>Model Number:</b>	<b>5KGS365SAA320D1</b>
<b>Catalog Number:</b>	<b>M8983</b>
<b>Instruction Manual:</b>	GEI-56128
<b>Connection Diagram:</b>	GEM2034E-FIG7
<b>Outline Drawing:</b>	239C6200AA

Accessory Connection Diagrams			
<b>Bearing Thermocouple:</b>	None	<b>Heater:</b>	None
<b>RTD:</b>	None	<b>Thermistor:</b>	None
<b>Thermostat:</b>	3027JE-2A	<b>Winding Thermocouple:</b>	None
<b>Bearing RTD:</b>	None		

## Table of Contents

Specification	01
Performance Characteristics	02
Outline Drawing	03
Connection Drawing(s)	04
Spare parts	05



**Marks:**

<b>MODEL NUMBER:</b>	<b>5KGS365SAA320D1</b>	<b>Estimated Weight:</b>	1020 Lbs
<b>Outline Drawing:</b>	239C6200AA	<b>Time Rating:</b>	CONT
<b>Connection Diagram:</b>	GEM2034E-FIG7	<b>Enclosure:</b>	TEFC
<b>Instruction Book:</b>	GEI-56128	<b>Encl Construction:</b>	X\$D
<b>Design Code:</b>	36BD3093A	<b>Ambient Max(°C):</b>	40
<b>Type:</b>	KGS	<b>Alt Ambient Max(°C):</b>	--
<b>Frame:</b>	365T	<b>Insulation Class:</b>	H
<b>Phases:</b>	3	<b>NEMA Design:</b>	C
<b>Poles:</b>	6	<b>Nominal Efficiency:</b>	94.1 %
<b>Output Power:</b>	50HP 37KW	<b>Guaranteed Efficiency:</b>	93.6
<b>RPM:</b>	1185	<b>3/4 Load Efficiency:</b>	94.4
<b>Voltage:</b>	460	<b>KVA Code:</b>	G
<b>Hertz:</b>	60	<b>Max KVAR:</b>	18.4
<b>Amps - FL:</b>	61.0	<b>Power Factor:</b>	81.5
<b>Service Factor:</b>	1.15	<b>Bearing - DE:</b>	NU 314
<b>Alt Service Factor:</b>	--	<b>Bearing - ODE:</b>	6314ZC3

**Enclosure is Totally Enclosed Fan-Cooled**

**Stamped Nameplate Notes:**

ROLLER BEARING - FOR BELTED LOAD ONLY  
 THERMOSTAT LEADS TB1-TB2 TRIP  
 STAMP NP249A5564P051 AS BELOW:  
 MODEL:5KGS365SAA320D1 S/N: XXX  
 CSA CERTIFIED CSA09.2216219 FOR EX NA IIC 200 C GC  
 CL 1 ZONE2 AEX NA IIC 200C;CL 1 DIV2 GRP ABCD 200C  
 IN -25C <= AMB <= 40C, 1.0 SF ON SINE-WAVE PWR  
 SURF TEMP 230C AT 1.15SF ON SINE-WAVE PWR  
 OR 200C VT OR 230C CT OR -- CHP PWM CONTROL  
 ALTERNATE RATING FOR PWM CONTROL 1.0SF 40C AMB  
 VT 0-60 HZ, CT 10-60 HZ, CHP -- HZ.

**Additional Information:**

6P - T EXTN  
 C/BOX 346 CU IN - 3.00" NPT  
 OIL RESISTANT SLEEVING ON LEADS  
 B5F4C4 HIGH FATIGUE STEEL AISI 4142 SHAFT MATERIAL  
 N.C. TRIP TSTAT LDS TO MAIN CONDUIT BOX  
 F1 MOUNTING

**Performance Characteristics**

1st Winding 1st Connection

**Design: 36BD3093A**

Marks:

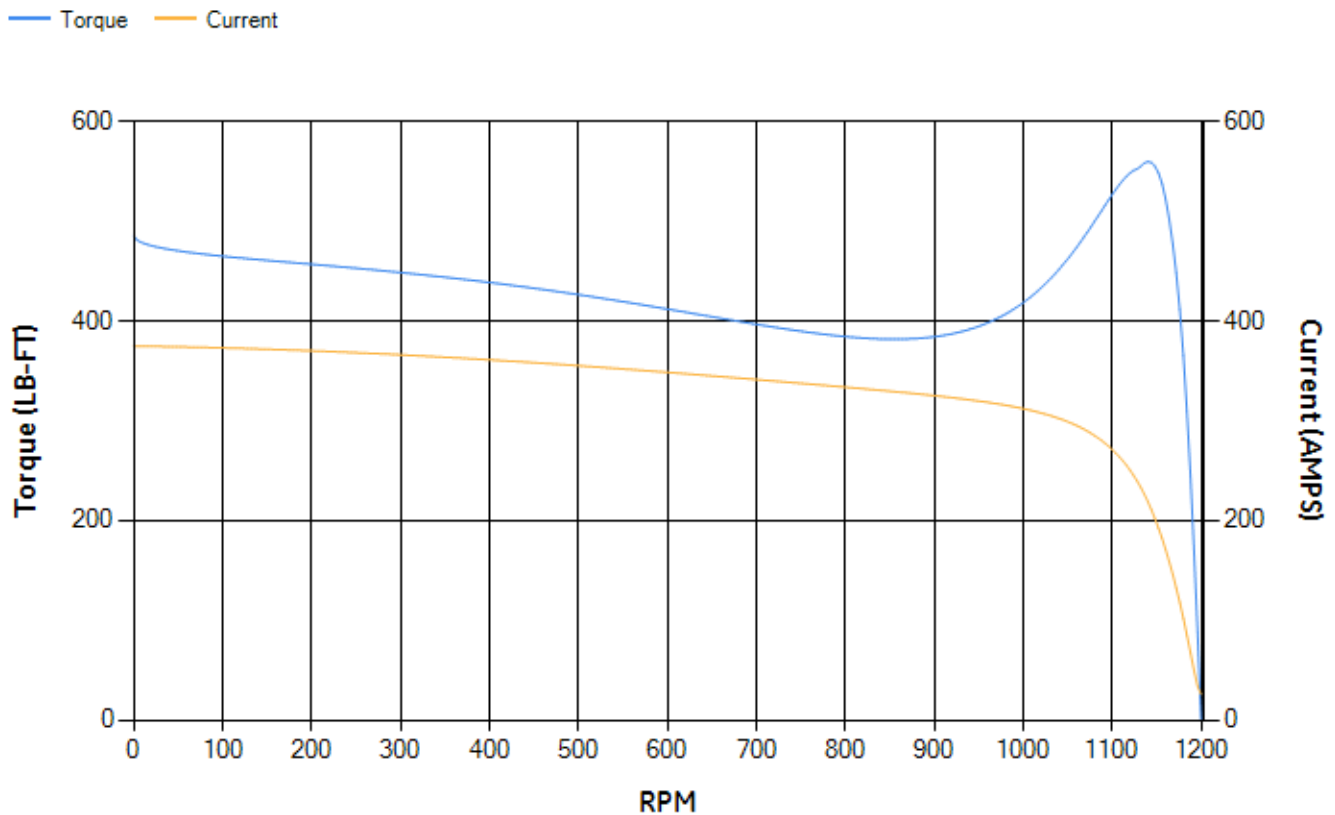
LOAD %	125.0	115.0	100.0	75.0	50.0	25.0	0.0
% EFF	93.19	93.53	94.16	94.4	94.18	91.67	0.00
% PF	83.81	83.14	81.58	76.6	65.93	43.31	3.26
AMPS	74.9	69.21	60.79	48.54	37.68	29.47	25.62

<b>TORQ(FL)#FT</b>	221.49	<b>TORQ(LR)%FL</b>	219.29	<b>TORQ(BD)%FL</b>	249
<b>AMPS(LR)</b>	374.78	<b>PF AT START</b>	0.45		

This motor is capable of two cold or one hot start with a maximum connected load inertia of 3197 Lb-Ft Sq (134.59 Kg-meter Sq)at 100% voltage, where the load torque varies with the square of the speed. Acceleration time with maximum inertia and the above load type is 35 seconds. Safe stall time at 100% voltage is 75 seconds cold, 41 seconds hot. Rotor inertia is 22.51 Lb-Ft Sq (0.95 Kg-meter Sq).

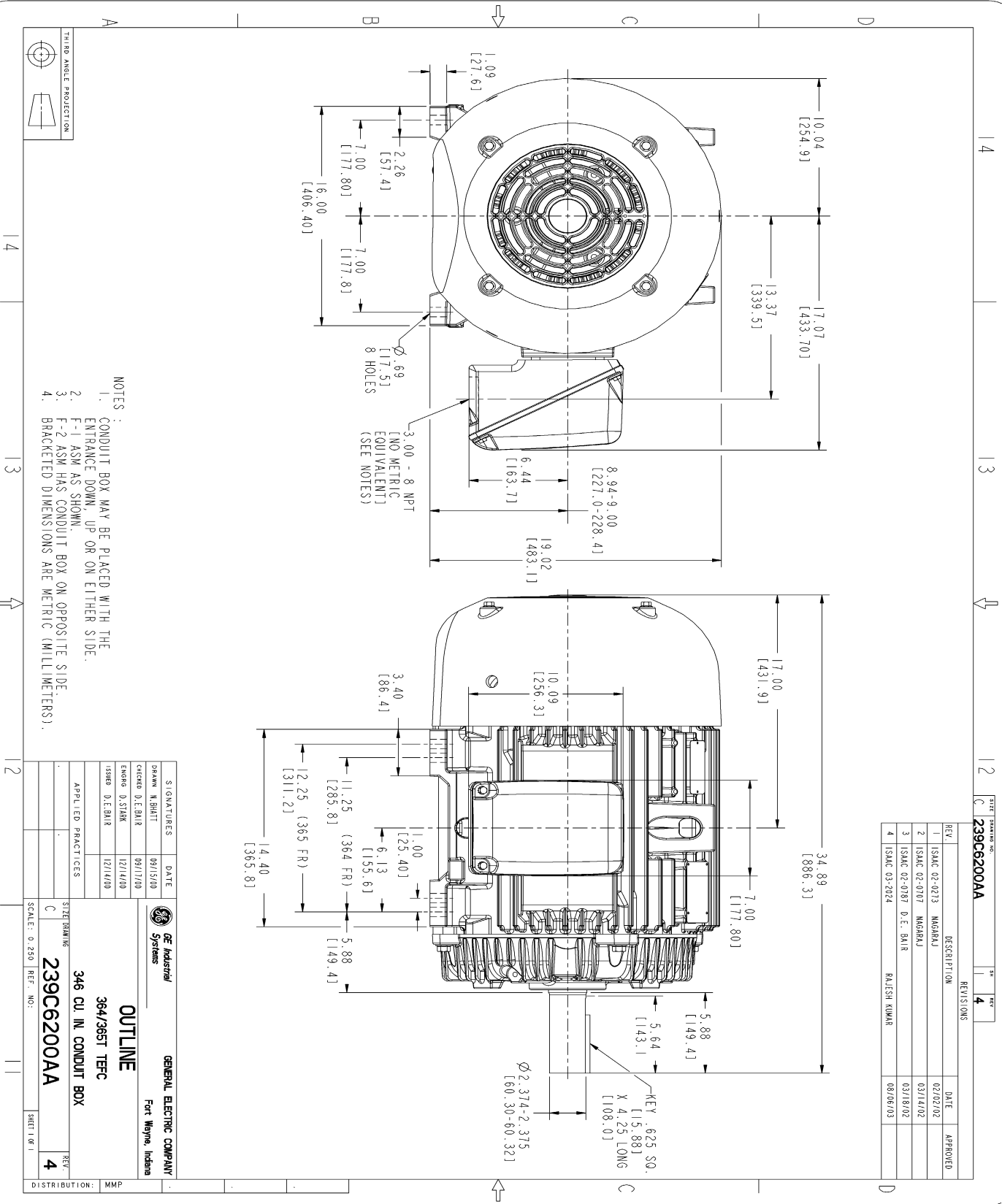
<b>Open Circuit A-C:</b>	0.484	<b>Short Circuit D-C:</b>	0.014
<b>Short Circuit A-C:</b>	0.024	<b>X/R Ratio:</b>	5.391
<b>Stator Slots:</b>	72	<b>Rotor Slots:</b>	58

**Speed Torque Current Curve (First Connection, First Speed)**



NAME: 103016807 OBJECT: 239C6200AA DATE: 07-Aug-03 23:32:55

Marks:



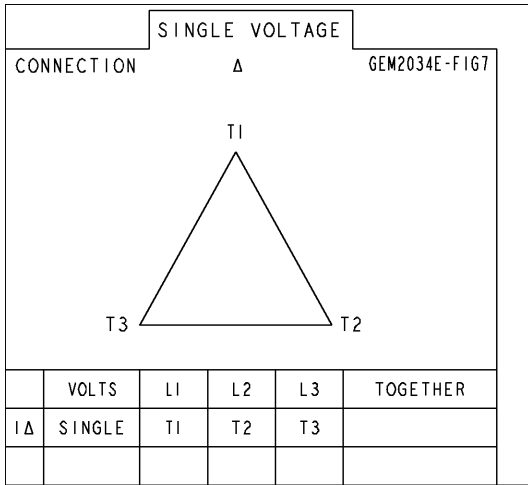
- NOTES :
1. CONDUIT BOX MAY BE PLACED WITH THE ENTRANCE DOWN, UP OR ON EITHER SIDE.
  2. F-1 ASM AS SHOWN.
  3. F-2 ASM HAS CONDUIT BOX ON OPPOSITE SIDE.
  4. BRACKETED DIMENSIONS ARE METRIC (MILLIMETERS).

REV.	DESCRIPTION	DATE	APPROVED
1	ISMAC 02-0213	02/02/02	
2	ISMAC 02-0707	03/14/02	
3	ISMAC 02-0787	03/18/02	
4	ISMAC 03-2024	08/06/03	

SIGNATURES	DATE	GENERAL ELECTRIC COMPANY
DRAWN M.BHATT	09/15/00	 <b>OUTLINE</b> 364/365T TERC 346 CU. IN. CONDUIT BOX 239C6200AA
CHECKED D.E.BH.R	09/17/00	
ENGINEER D.S.TANK	12/11/00	
ISSUED D.E.BH.R	12/11/00	
APPLIED PRACTICES		
SCALE: 0.250		
REF. NO:		
SHEET NO. 1		
REV. 4		
DISTRIBUTION: MMP		

Marks:

**Connection Diagram**  
**GEM2034E-FIG7**



**Thermostat Connection**  
**3027JE-2A**



End shield Assembly		
Part Description	DE Side Part#	ODE Side Part#
End Shield	115E4250AA1	115E4250LK1
Bearing	235A2524AA01	235A2616AA01
Slinger/Inproseal	149C4399G05	149C4399G05

Fan & Fan Cover Assembly	
Part Description	Part#
Fan	159C7100G01
Fan Cover	128D6810AA1

Conduit & Accessories Box Assembly	
Part Description	Part#
Conduit Box	149C4429AA2

Mechanical Accessories	
Part Description	Part#
Brake	
Tachometer	