

# Product Information Packet

November 7, 2016

Data shown is for the current revision model #. Ensure your nameplate model # matches.

<b>Model Number:</b>	<b>5KS286ATE115A</b>
<b>Catalog Number:</b>	<b>E755</b>
<b>Instruction Manual:</b>	GEI-M1023
<b>Connection Diagram:</b>	GEM2034E-FIG10
<b>Outline Drawing:</b>	358B6217AD

Accessory Connection Diagrams			
<b>Bearing Thermocouple:</b>	None	<b>Heater:</b>	None
<b>RTD:</b>	None	<b>Thermistor:</b>	None
<b>Thermostat:</b>	None	<b>Winding Thermocouple:</b>	None
<b>Bearing RTD:</b>	None		

Table of Contents	
Specification	01
Performance Characteristics	02
Outline Drawing	03
Connection Drawing(s)	04



**Marks:**

<b>MODEL NUMBER:</b>	<b>5KS286ATE115A</b>	<b>Estimated Weight:</b>	456 Lbs
<b>Outline Drawing:</b>	358B6217AD	<b>Time Rating:</b>	CONT
<b>Connection Diagram:</b>	GEM2034E-FIG10	<b>Enclosure:</b>	DP
<b>Instruction Book:</b>	GEI-M1023	<b>Encl Construction:</b>	OPEN
<b>Design Code:</b>	28AD0007A	<b>Ambient Max(°C):</b>	40
<b>Type:</b>	KS	<b>Alt Ambient Max(°C):</b>	--
<b>Frame:</b>	286TS	<b>Insulation Class:</b>	F
<b>Phases:</b>	3	<b>NEMA Design:</b>	A
<b>Poles:</b>	2	<b>Nominal Efficiency:</b>	92.4 %
<b>Output Power:</b>	40HP 29.6KW	<b>Guaranteed Efficiency:</b>	91.0
<b>RPM:</b>	3550	<b>3/4 Load Efficiency:</b>	92.2
<b>Voltage:</b>	230/460	<b>KVA Code:</b>	J
<b>Hertz:</b>	60	<b>Max KVAR:</b>	16.2
<b>Amps - FL:</b>	106/53	<b>Power Factor:</b>	76.5
<b>Service Factor:</b>	1.15	<b>Bearing - DE:</b>	6312ZZC3
<b>Alt Service Factor:</b>	--	<b>Bearing - ODE:</b>	6310ZZC3

Enclosure is Dripproof

---

**Stamped Nameplate Notes:****Additional Information:**

2 POLE DP  
 LRA: 752.2/376.1  
 NO. OF MOTOR LEADS: 12  
 CONDUIT BOX VOLUME (IN<sup>3</sup>): 244  
 CONDUIT BOX MTL: STAMPED STEEL  
 GREASE TYPE: SHELL ALVANIA R3 LITHIUM GREASE  
 USABLE AT 200V @ 40HP , 107 AMPS @ 1.0 SF  
 50 HZ DATA: 40HP, 200/400V, 128.6/64.3 AMPS @ 1.0SF, 2945 RPM  
 SOUND POWER: 82.4  
 DMK, 06/04, DATA UPDATE 11/2004  
 INVERTER DUTY PER NEMA MG1 PART 31  
 FOR VARIABLE TORQUE LOADS

**Performance Characteristics**

1st Winding 1st Connection

**Design: 28AD0007A**

**Marks:**

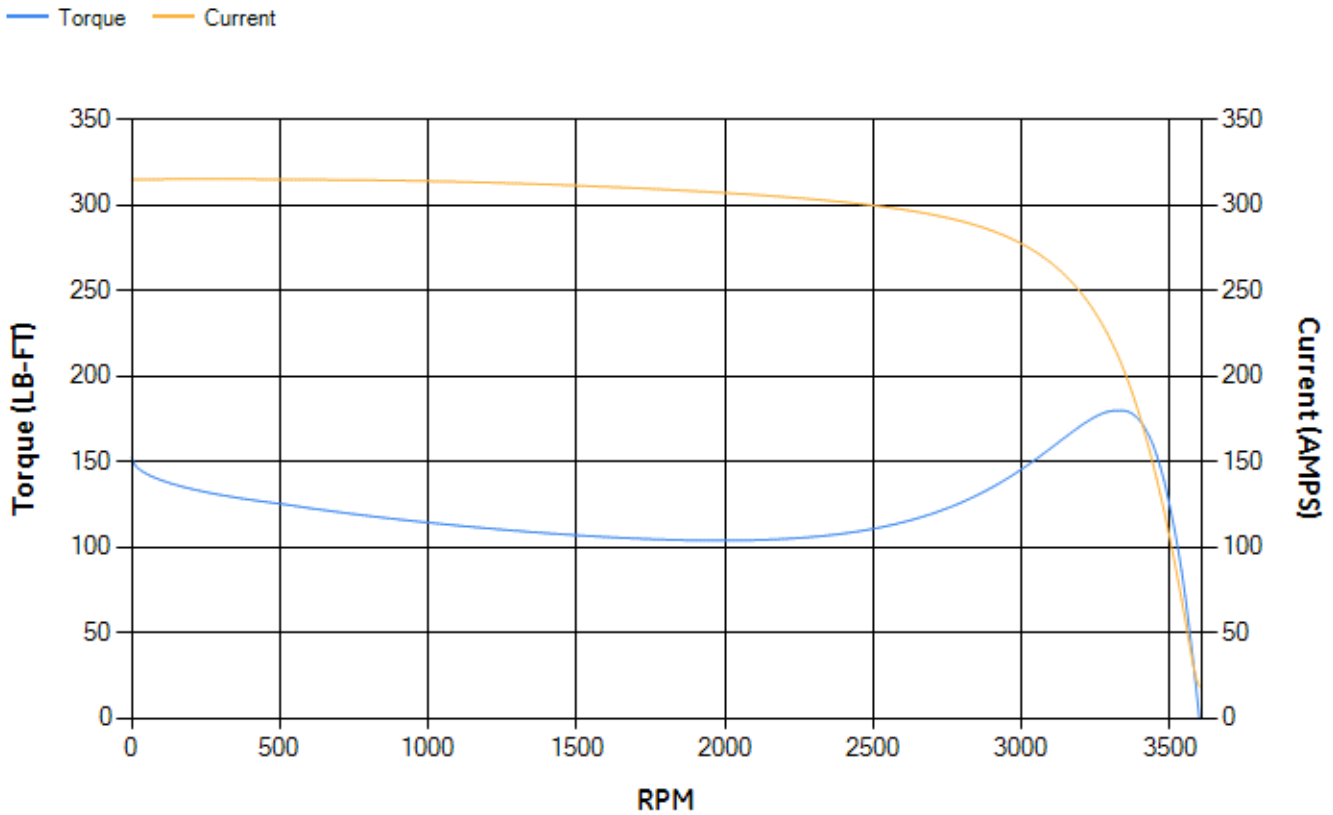
LOAD %	125.0	115.0	100.0	75.0	50.0	25.0	0.0
% EFF	91.91	92.11	92.5	92.16	90.86	85.58	0.00
% PF	85.77	85.31	84.13	80.14	71.07	50.1	7.92
AMPS	59.36	54.79	48.11	38.02	28.99	21.83	18.14

TORQ(FL)#FT	59.09	TORQ(LR)%FL	257.76	TORQ(BD)%FL	302.21
AMPS(LR)	314.7	PF AT START	0.34		

This motor is capable of two cold or one hot start with a maximum connected load inertia of 265 Lb-Ft Sq (11.16 Kg-meter Sq)at 100% voltage, where the load torque varies with the square of the speed. Acceleration time with maximum inertia and the above load type is 30 seconds. Safe stall time at 100% voltage is 51 seconds cold, 42 seconds hot. Rotor inertia is 2.65 Lb-Ft Sq (0.11 Kg-meter Sq).

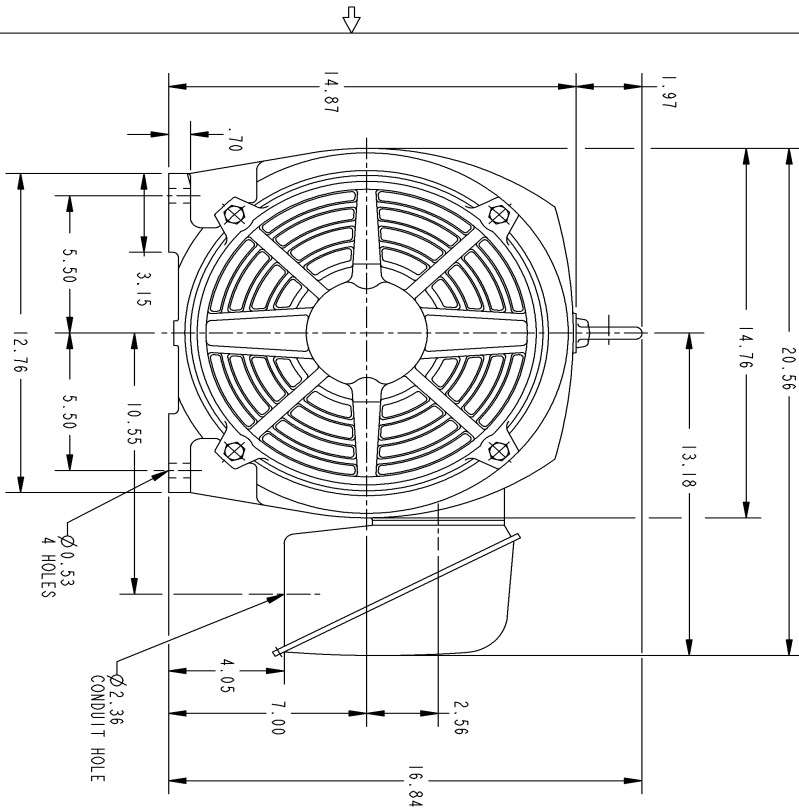
Open Circuit A-C:	0.531	Short Circuit D-C:	0.019
Short Circuit A-C:	0.023	X/R Ratio:	7.32
Stator Slots:	36	Rotor Slots:	28

**Speed Torque Current Curve (First Connection, First Speed)**



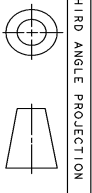
NAME:501452442 OBJECT:358B6217AD DATE:15-May-07 15:57:19

Marks:



NOTES :

1. CONDUIT BOX MAY BE PLACED WITH THE ENTRANCE DOWN, UP OR ON EITHER SIDE.
2. F-1 ASW AS SHOWN.
3. F-2 ASW - HAS CONDUIT BOX ON OPPOSITE SIDE.



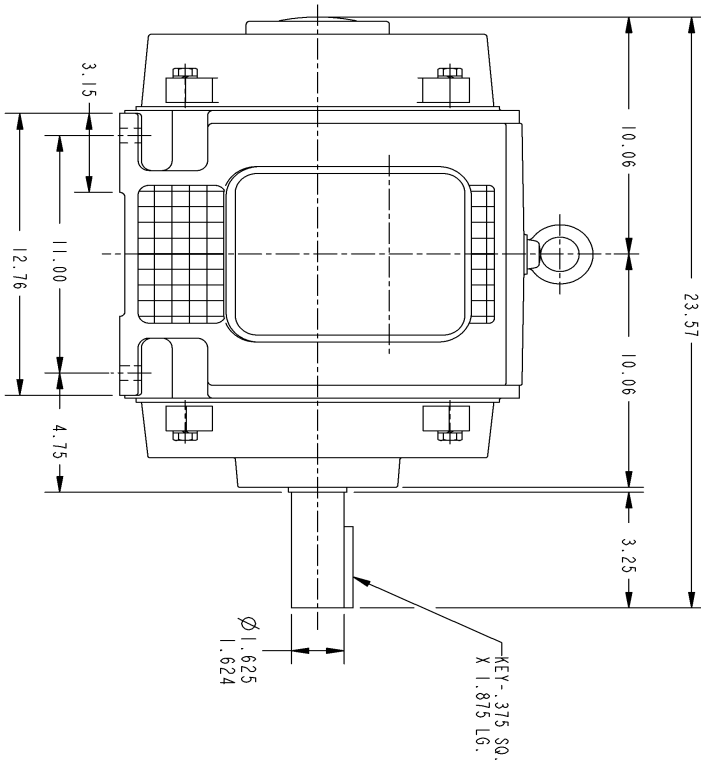
THIRD ANGLE PROJECTION

SIZE DRAWING FOR  
**358B6217AD**

GE PROPRIETARY INNOVATION

This General is the property of General Electric Company (GE) and contains confidential information. This General is loaned to the recipient under the condition that the information contained herein shall be disclosed to no other person and shall be returned to GE upon request. This General shall be returned to GE upon 15 days after the date of receipt. This General shall be returned to GE upon 15 days after the date of receipt. This General shall be returned to GE upon 15 days after the date of receipt. This General shall be returned to GE upon 15 days after the date of receipt.

REV.	DESCRIPTION	DATE	APPROVED
1	ISAAC 07-0770	05/03/07	R. KOHNE



UNLESS OTHERWISE SPECIFIED:		SIGNATURES		DATE	
DIMENSIONS ARE IN INCHES		DRAM	P. RAJU	03/27/03	
TOLERANCE ON:		CHECKED	PRABHAKAR	03/27/03	
2 PL DECIMALS ± .		ENGR			
3 PL DECIMALS ± .		ISSUED	PRABHAKAR	03/27/03	
ANGLES ± 1'		APPLIED PRACTICES			
MATERIAL:		SCALE: DRAWING SCALE			
SIZE DRAWING		GENERAL ELECTRIC COMPANY		REV. 1	
B		Fort Wayne, Indiana			
358B6217AD		OUTLINE			
		286TS - OPEN DRIP PROOF			
SHEET 1 OF 1		DISTRIBUTION:			

Marks:

**Connection Diagram**  
**GEM2034E-FIG10**

