

Product Information Packet

November 8, 2016

Data shown is for the current revision model #. Ensure your nameplate model # matches.

Model Number:	5KS364SAA204D11
Catalog Number:	M9776
Instruction Manual:	GEI-56128
Connection Diagram:	GEM2034E-FIG7
Outline Drawing:	239C6200AA

Accessory Connection Diagrams			
Bearing Thermocouple:	None	Heater:	None
RTD:	None	Thermistor:	None
Thermostat:	None	Winding Thermocouple:	None
Bearing RTD:	None		

Table of Contents

Specification	01
Performance Characteristics	02
Outline Drawing	03
Connection Drawing(s)	04
Spare parts	05



Marks:

MODEL NUMBER:	5KS364SAA204D11	Estimated Weight:	970 Lbs
Outline Drawing:	239C6200AA	Time Rating:	CONT
Connection Diagram:	GEM2034E-FIG7	Enclosure:	TEFC
Instruction Book:	GEI-56128	Encl Construction:	X\$D
Design Code:	36BD1188B	Ambient Max(°C):	40
Type:	KS	Alt Ambient Max(°C):	60
Frame:	364T	Insulation Class:	H
Phases:	3	NEMA Design:	B
Poles:	4	Nominal Efficiency:	95.0 %
Output Power:	60HP 44.4KW	Guaranteed Efficiency:	94.5
RPM:	1780	3/4 Load Efficiency:	95.1
Voltage:	575	KVA Code:	G
Hertz:	60	Max KVAR:	20.5
Amps - FL:	57.3	Power Factor:	82.5
Service Factor:	1.15	Bearing - DE:	6314ZC3
Alt Service Factor:	1.00	Bearing - ODE:	6314ZC3

Enclosure is Totally Enclosed Fan-Cooled

Stamped Nameplate Notes:

STAMP NP249A5564P051 AS BELOW:
 MODEL:5KS364SAA204D11 S/N: XXX
 CSA CERTIFIED CSA09.2216219 FOR EX NA IIC 200 C GC
 CL 1 ZONE2 AEX NA IIC 200C;CL 1 DIV2 GRP ABCD 200C
 IN -40C <= AMB <= 40C, 1.0 SF ON SINE-WAVE PWR
 SURF TEMP 260C AT 1.15SF ON SINE-WAVE PWR
 OR 200C VT OR 230C CT OR 200C CHP PWM CONTROL
 ALTERNATE RATING FOR PWM CONTROL 1.0SF 40C AMB
 VT 0-60 HZ, CT 6-60 HZ, CHP 60-90 HZ.

Additional Information:

4P - T EXTN
 C/BOX 346 CU IN - 3.00" NPT
 OIL RESISTANT SLEEVING ON LEADS
 F1 MOUNTING

Performance Characteristics

1st Winding 1st Connection

Design: 36BD1188B

Marks:

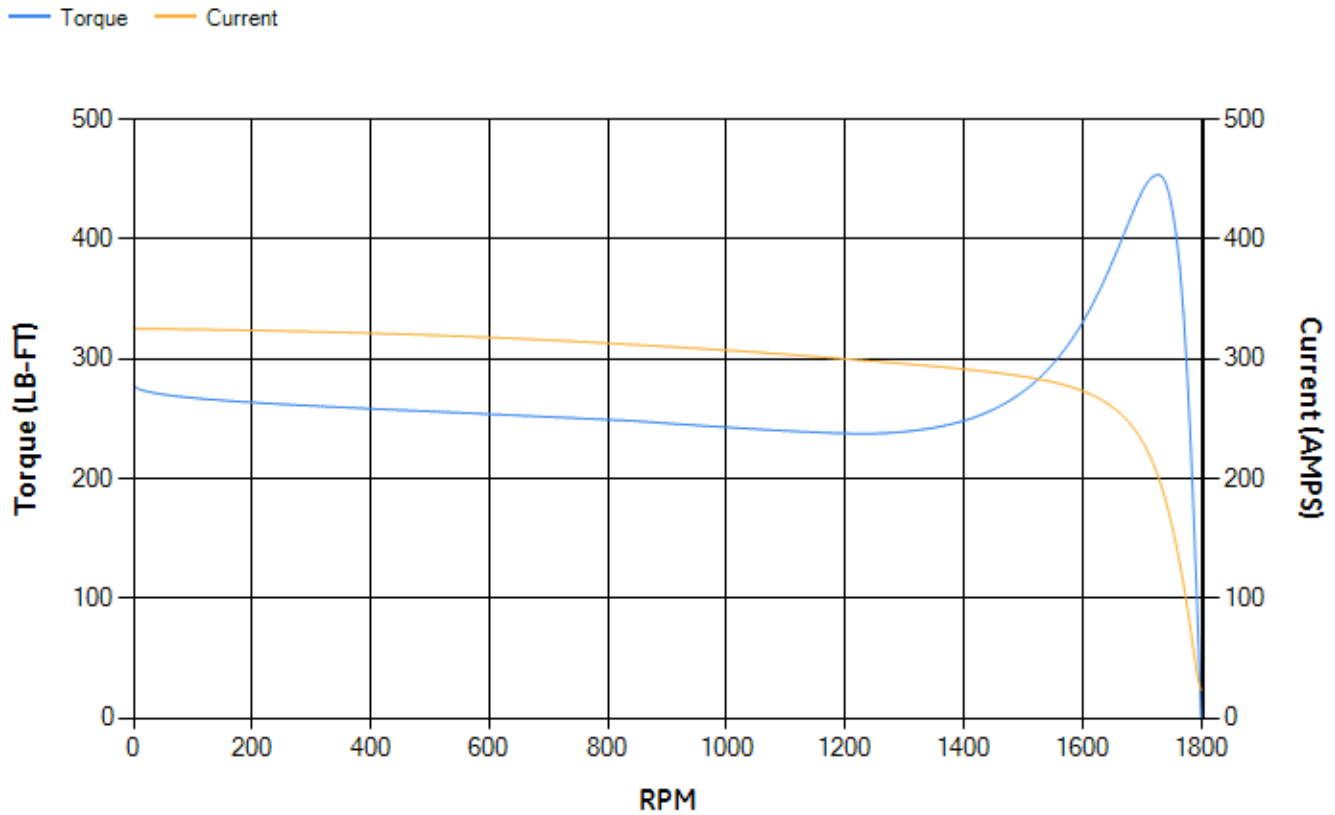
LOAD %	125.0	115.0	100.0	75.0	50.0	25.0	0.0
% EFF	94.25	94.51	95.04	95.13	94.83	92.4	0.00
% PF	84.52	84	82.68	78.22	68.19	45.61	3.22
AMPS	70.5	65.08	57.04	45.28	34.74	26.65	22.86

TORQ(FL)#FT	176.86	TORQ(LR)%FL	157.39	TORQ(BD)%FL	255.92
AMPS(LR)	325.12	PF AT START	0.31		

This motor is capable of two cold or one hot start with a maximum connected load inertia of 1155 Lb-Ft Sq (48.63 Kg-meter Sq)at 100% voltage, where the load torque varies with the square of the speed. Acceleration time with maximum inertia and the above load type is 32 seconds. Safe stall time at 100% voltage is 76 seconds cold, 39 seconds hot. Rotor inertia is 12.22 Lb-Ft Sq (0.51 Kg-meter Sq).

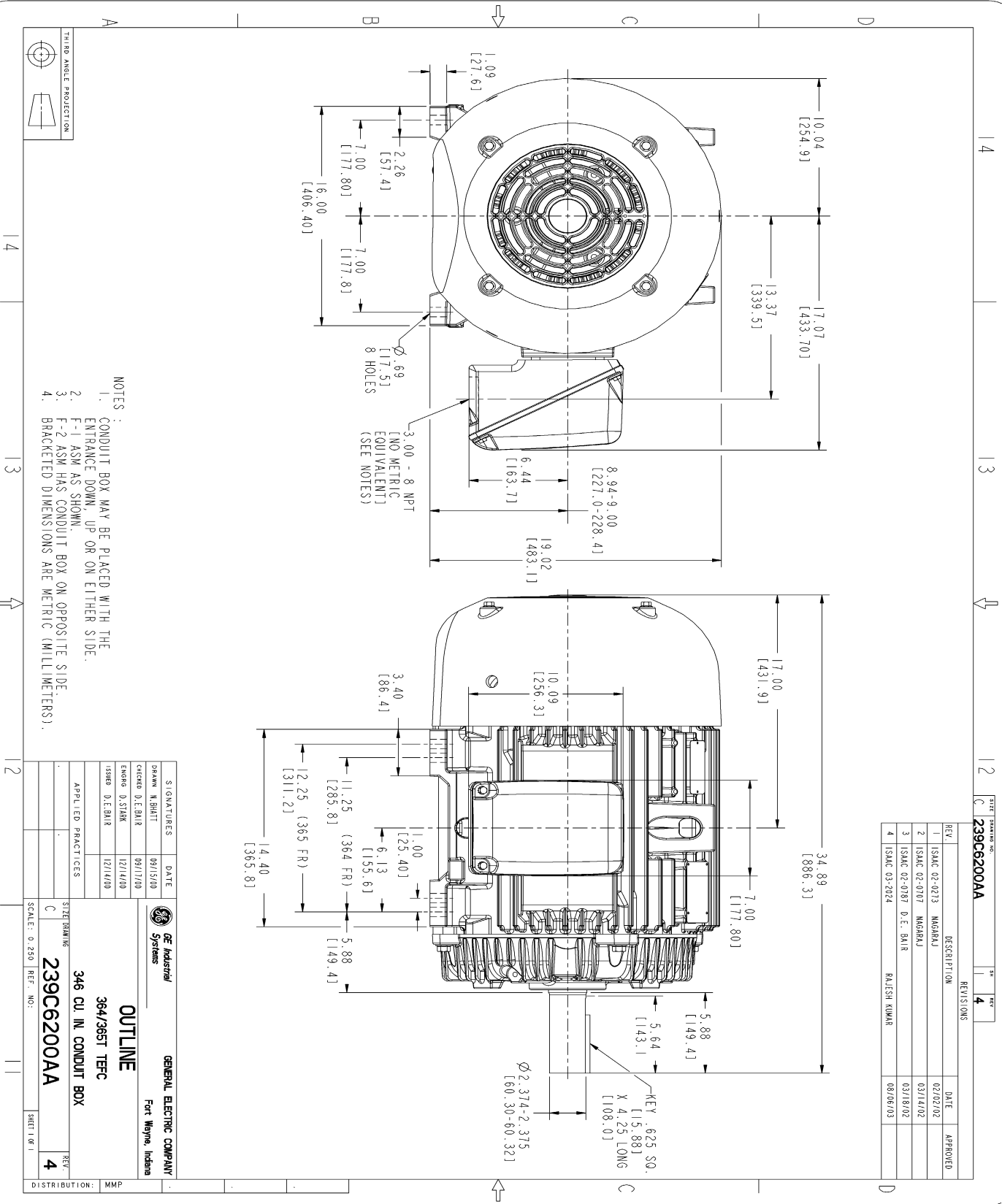
Open Circuit A-C:	0.601	Short Circuit D-C:	0.024
Short Circuit A-C:	0.035	X/R Ratio:	8.947
Stator Slots:	60	Rotor Slots:	50

Speed Torque Current Curve (First Connection, First Speed)



NAME: 103016807 OBJECT: 239C6200AA DATE: 07-Aug-03 23:32:55

Marks:



- NOTES :
1. CONDUIT BOX MAY BE PLACED WITH THE ENTRANCE DOWN, UP OR ON EITHER SIDE.
 2. F-1 ASM AS SHOWN.
 3. F-2 ASM HAS CONDUIT BOX ON OPPOSITE SIDE.
 4. BRACKETED DIMENSIONS ARE METRIC (MILLIMETERS).

REV.	DESCRIPTION	DATE	APPROVED
1	ISMAC 02-0213	02/02/02	
2	ISMAC 02-0707	03/14/02	
3	ISMAC 02-0787 O.E. SAIK	03/18/02	
4	ISMAC 03-2024	08/06/03	

SIGNATURES	DATE	GENERAL ELECTRIC COMPANY
DRAWN M.SHAH	09/15/00	<p>OUTLINE 364/365T TERC 346 CU. IN. CONDUIT BOX</p>
CHECKED D.E. BHAR	09/17/00	
ENGRG D.SITAK	12/14/00	
ISSUED D.E. BHAR	12/14/00	
APPLIED PRACTICES		
SCALE: 0.250		
REF. NO:		
SHEET NO. 1		
REV. 4		
DISTRIBUTION: MMP		

Marks:

Connection Diagram
GEM2034E-FIG7



End shield Assembly		
Part Description	DE Side Part#	ODE Side Part#
End Shield	115E4250AA1	115E4250LK1
Bearing	235A2616AA01	235A2616AA01
Slinger/Inproseal	149C4399G05	149C4399G05

Fan & Fan Cover Assembly	
Part Description	Part#
Fan	159C7100AA1
Fan Cover	128D6810AA1

Conduit & Accessories Box Assembly	
Part Description	Part#
Conduit Box	149C4429AA2

Mechanical Accessories	
Part Description	Part#
Brake	
Tachometer	