

Product Information Packet

March 4, 2014

Data shown is for the current revision model #. Ensure your nameplate model # matches.

Model Number:	5KAF447SAA220A
Catalog Number:	M9322
Instruction Manual:	GEI-56128
Connection Diagram:	GEM2034E-FIG20
Outline Drawing:	239C5800AA

Accessory Connection Diagrams			
Bearing Thermocouple:	None	Heater:	None
RTD:	None	Thermistor:	None
Thermostat:	None	Winding Thermocouple:	None
Bearing RTD:	None		

Table of Contents	
Specification	01
Performance Characteristics	02
Outline Drawing	03
Connection Drawing(s)	04

Marks:

MODEL NUMBER:	5KAF447SAA220A	Estimated Weight:	2420 Lbs
Outline Drawing:	239C5800AA	Time Rating:	CONT
Connection Diagram:	GEM2034E-FIG20	Enclosure:	TEFC
Instruction Book:	GEI-56128	Encl Construction:	A\$D
Design Code:	49BD1077A	Ambient Max(°C):	40
Type:	KAF	Alt Ambient Max(°C):	65
Frame:	447T	Insulation Class:	H
Phases:	3	NEMA Design:	-
Poles:	4	Nominal Efficiency:	96.2 %
Output Power:	200HP 148KW	Guaranteed Efficiency:	96.5
RPM:	1790	3/4 Load Efficiency:	96.5
Voltage:	460	KVA Code:	H
Hertz:	60	Max KVAR:	57.1
Amps - FL:	224.0	Power Factor:	87.0
Service Factor:	1.15	Bearing - DE:	6318ZC3
Alt Service Factor:	1.00	Bearing - ODE:	6318ZC3-VL0241

Enclosure is Totally Enclosed Fan-Cooled

Stamped Nameplate Notes:

ALTERNATE RATING INVERTER DUTY 1.0 SF 40C AMBIENT
 SUITABLE FOR CONSTANT TORQUE;PWM OPERATION;0-60HZ
 THERMOSTAT LEADS PC-PC TRIP

Additional Information:

4P - T EXTN - SPLIT LEAD
 700 CU IN - 3.00" NPT
 E/S GROUND BOLT MTD ON DE C/BOX SIDE NEAR FOOT
 OIL RESISTANT SLEEVING ON LEADS
 TACH PROVISION MOTOR
 N.C. TRIP TSTAT LDS TO MAIN CONDUIT BOX
 PAINTED ODE ACCESSORY RABBET
 SGR #235A4970AG8 MOUNTED ON DE BRG CAP

Performance Characteristics

1st Winding 1st Connection

Design: 49BD1077A

Marks:

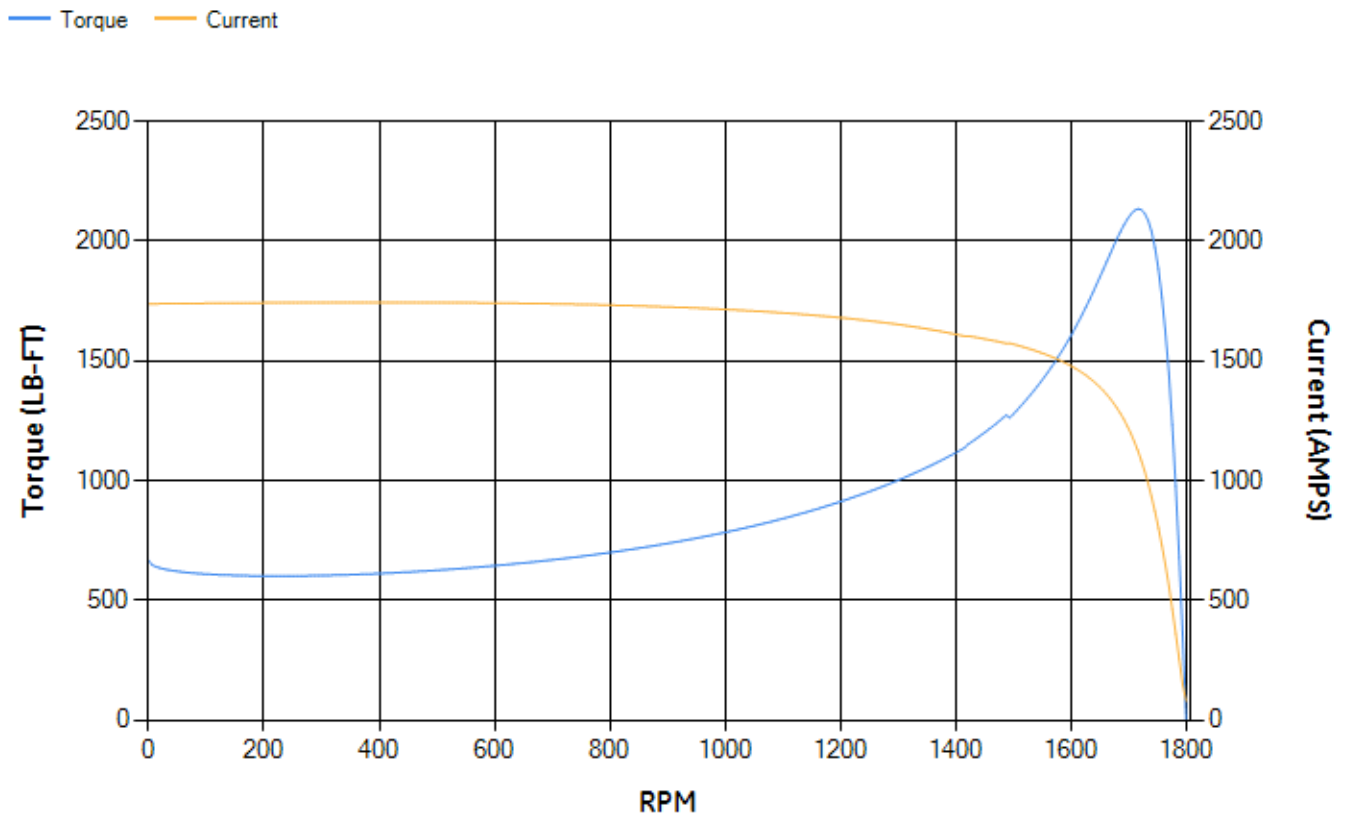
LOAD %	125.0	115.0	100.0	75.0	50.0	25.0	0.0
% EFF	95.85	96.01	96.4	96.35	96.05	94.08	0.00
% PF	88.87	88.35	87.15	83.26	74.23	51.73	3.14
AMPS	274.67	253.76	222.79	175	131.27	96.16	79.6

TORQ(FL)#FT	587.34	TORQ(LR)%FL	113.25	TORQ(BD)%FL	362.88
AMPS(LR)	1737.49	PF AT START	0.2		

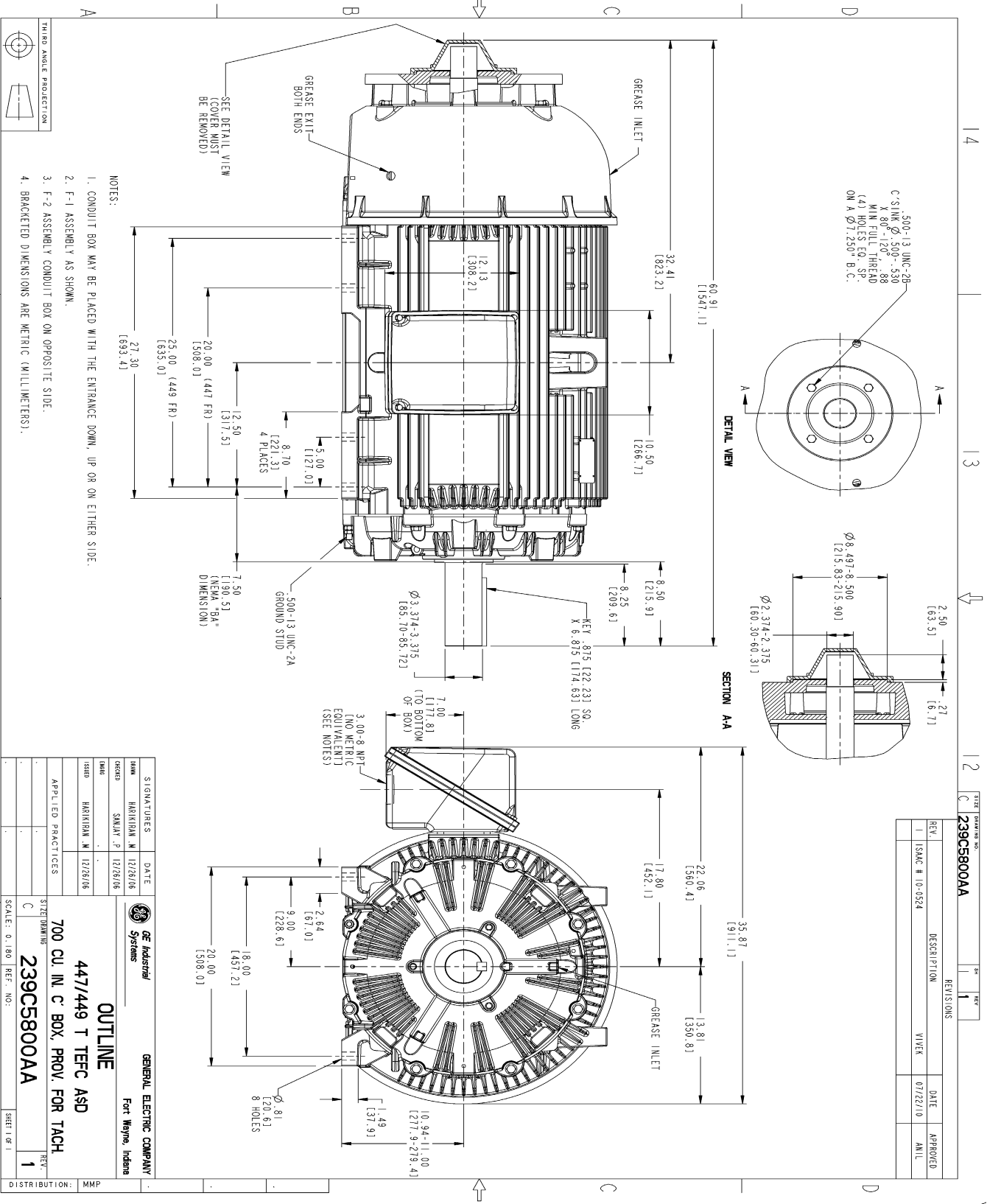
This motor is capable of two cold or one hot start with a maximum connected load inertia of 4963 Lb-Ft Sq (208.94 Kg-meter Sq)at 100% voltage, where the load torque varies with the square of the speed. Acceleration time with maximum inertia and the above load type is 42 seconds. Safe stall time at 100% voltage is 113 seconds cold, 50 seconds hot. Rotor inertia is 71.88 Lb-Ft Sq (3.03 Kg-meter Sq).

Open Circuit A-C:	1.042	Short Circuit D-C:	0.028
Short Circuit A-C:	0.043	X/R Ratio:	10.673
Stator Slots:	72	Rotor Slots:	58

Speed Torque Current Curve (First Connection, First Speed)



Marks:



NOTES:

- 1. CONDUIT BOX MAY BE PLACED WITH THE ENTRANCE DOWN, UP OR ON EITHER SIDE.
- 2. F-1 ASSEMBLY AS SHOWN.
- 3. F-2 ASSEMBLY CONDUIT BOX ON OPPOSITE SIDE.
- 4. BRACKETED DIMENSIONS ARE METRIC (MILLIMETERS).

REV.	DESCRIPTION	DATE	APPROVED
1	ISSAC # 10-9524	07/22/10	AMIL

REV.	DESCRIPTION	DATE	APPROVED
1	ISSAC # 10-9524	07/22/10	AMIL

REV.	DESCRIPTION	DATE	APPROVED
1	ISSAC # 10-9524	07/22/10	AMIL

REV.	DESCRIPTION	DATE	APPROVED
1	ISSAC # 10-9524	07/22/10	AMIL

DISTRIBUTION: MMP

Marks:

Connection Diagram
GEM2034E-FIG20

