

Product Information Packet

January 12, 2017

Data shown is for the current revision model #. Ensure your nameplate model # matches.

Model Number:	5KS513SAA367A
Catalog Number:	Q5029
Instruction Manual:	GEI-56128
Connection Diagram:	GEM2034E-FIG20
Outline Drawing:	239C6C00HC

Accessory Connection Diagrams			
Bearing Thermocouple:	None	Heater:	3027JE-1C
RTD:	None	Thermistor:	None
Thermostat:	None	Winding Thermocouple:	None
Bearing RTD:	None		

Table of Contents	
Specification	01
Performance Characteristics	02
Outline Drawing	03
Connection Drawing(s)	04

Marks:

MODEL NUMBER:	5KS513SAA367A	Estimated Weight:	7150 Lbs
Outline Drawing:	239C6C00HC	Time Rating:	CONT
Connection Diagram:	GEM2034E-FIG20	Enclosure:	TEFC
Instruction Book:	GEI-56128	Encl Construction:	SD
Design Code:	50BD3164B	Ambient Max(°C):	40
Type:	KS	Alt Ambient Max(°C):	--
Frame:	5013S	Insulation Class:	F
Phases:	3	NEMA Design:	--
Poles:	6	Nominal Efficiency:	95.8 %
Output Power:	700HP 518KW	Guaranteed Efficiency:	95.0
RPM:	1190	3/4 Load Efficiency:	96.6
Voltage:	575	KVA Code:	F
Hertz:	60	Max KVAR:	177.4
Amps - FL:	636.0	Power Factor:	86.0
Service Factor:	1.00	Bearing - DE:	6320ZC3
Alt Service Factor:	--	Bearing - ODE:	6320ZC3

Enclosure is Totally Enclosed Fan-Cooled

Stamped Nameplate Notes:

HTR LDS HE1-HE2 115V 350W
 INVERTER DUTY PER NEMA MG1 PART 31
 ALTERNATE RATING FOR PWM CONTROL:1.0SF 40C AMBIENT
 VAR TORQUE RANGE 0-60 HZ
 FOR DIRECT COUPLED LOAD ONLY

Additional Information:

6P - S EXTN - SPLIT LEAD
 5700 CU IN - 3(3.00" NPT)
 C/B GRD PLATE
 115V HTR LDS TO AUX BOX OPP MAIN CONDUIT BOX
 SPACE HEATER CAUTION NAMEPLATE
 NEMA TYPE GRD PAD
 F1 MOUNTING
 PROVISION FOR BTD ON BOTH ENDS PLUGGED
 CLASS F RISE AT 1.00 SF

Performance Characteristics

1st Winding 1st Connection

Design: 50BD3164B

Marks:

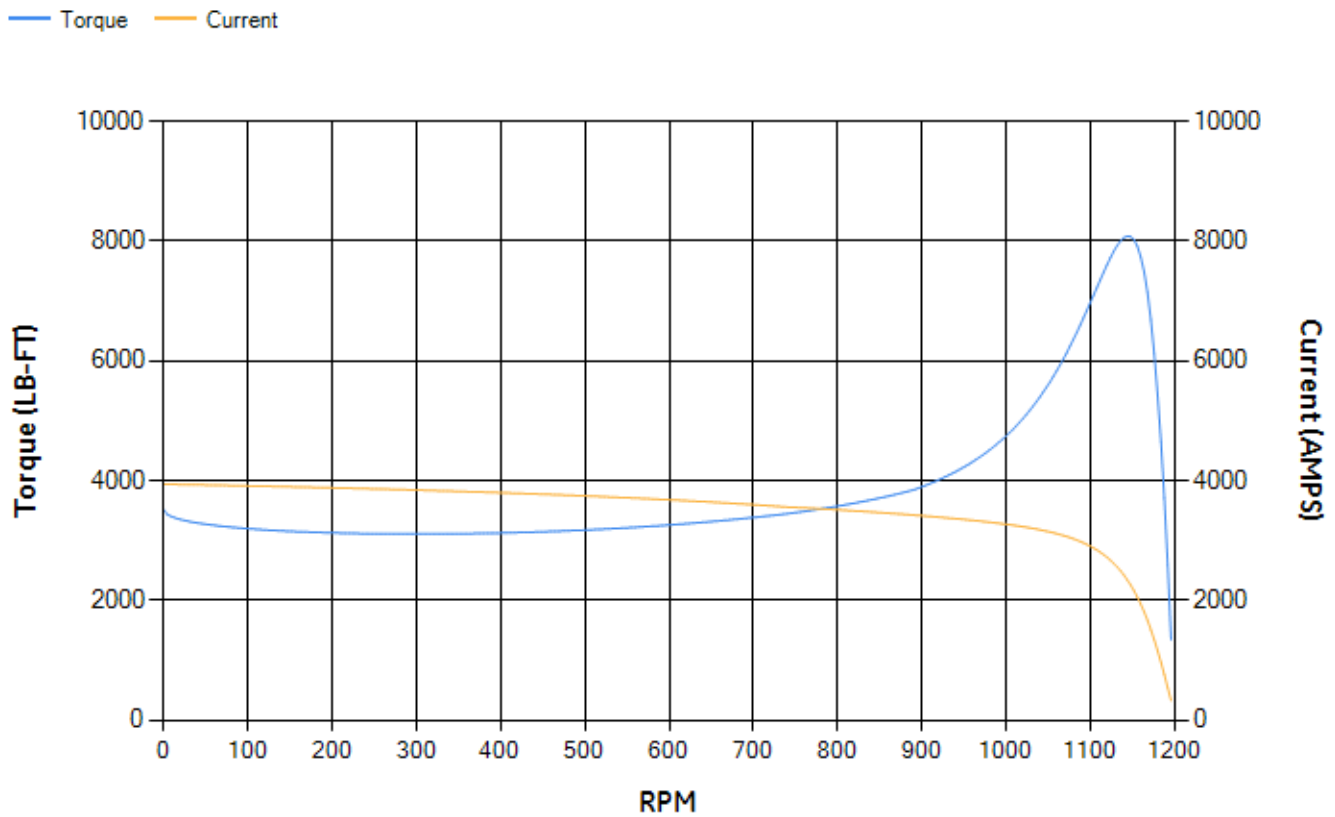
LOAD %	125.0	115.0	100.0	75.0	50.0	25.0	0.0
% EFF	95.55	95.82	96.37	96.58	96.64	95.46	0.00
% PF	86.4	86.37	85.9	83.32	75.98	54.99	2.53
AMPS	793.61	728.28	633.39	488.48	356.89	249.61	197.93

TORQ(FL)#FT	3092.16	TORQ(LR)%FL	113.57	TORQ(BD)%FL	260.93
AMPS(LR)	3938.94	PF AT START	0.22		

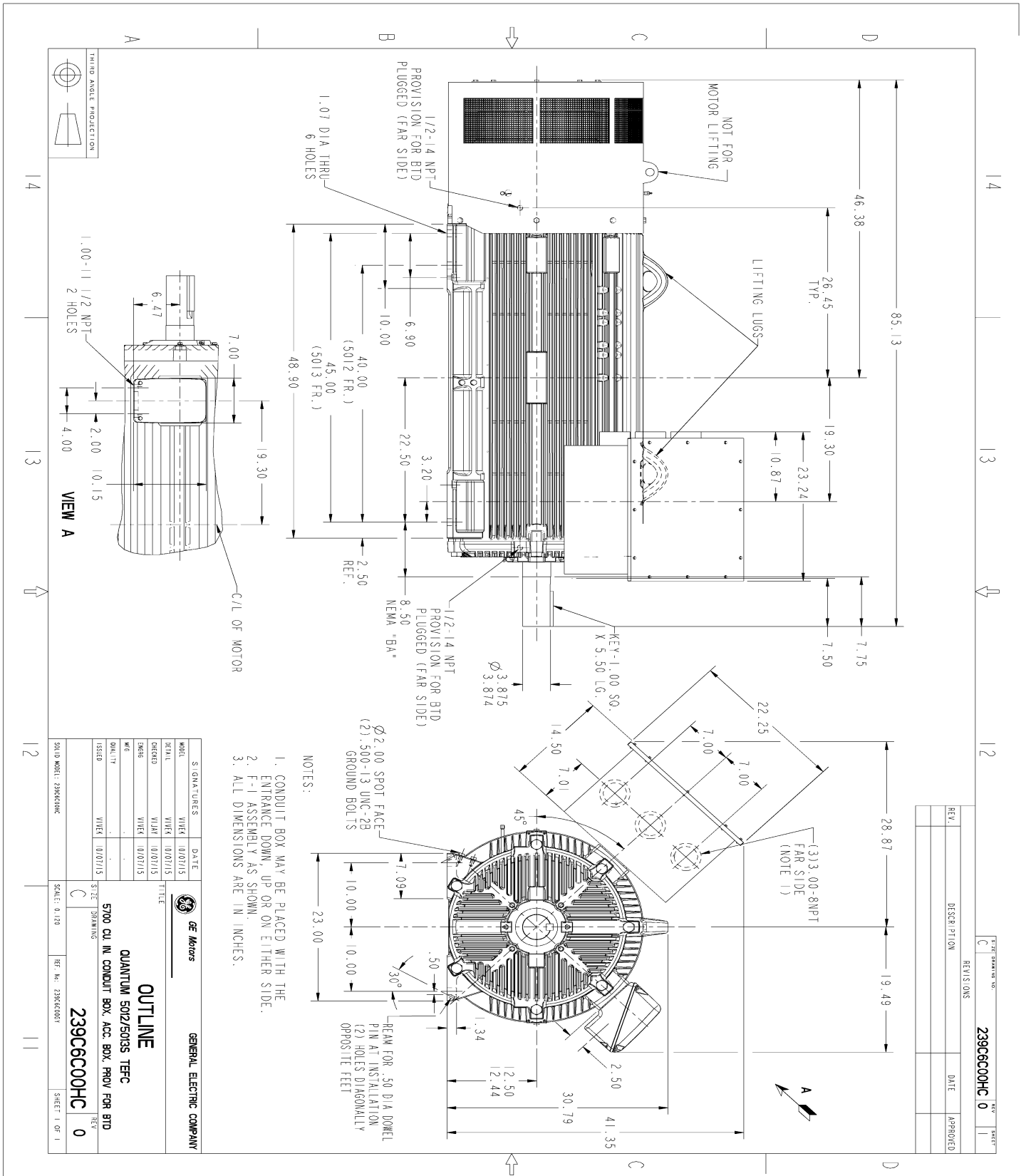
This motor is capable of two cold or one hot start with a maximum connected load inertia of 18941 Lb-Ft Sq (797.42 Kg-meter Sq)at 100% voltage, where the load torque varies with the square of the speed. Acceleration time with maximum inertia and the above load type is 27 seconds. Safe stall time at 100% voltage is 81 seconds cold, 37 seconds hot. Rotor inertia is 369.52 Lb-Ft Sq (15.56 Kg-meter Sq).

Open Circuit A-C:	0.878	Short Circuit D-C:	0.04
Short Circuit A-C:	0.042	X/R Ratio:	15.154
Stator Slots:	72	Rotor Slots:	58

Speed Torque Current Curve (First Connection, First Speed)



Marks:



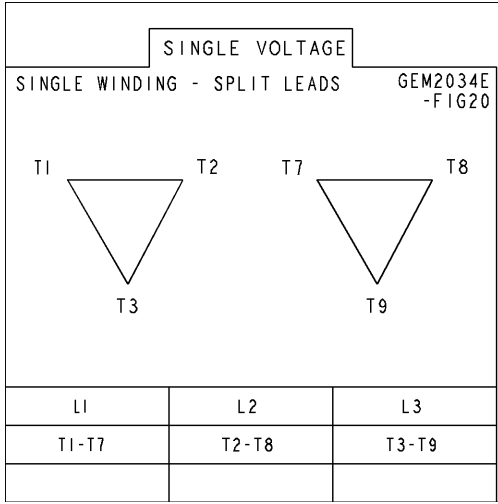
REV.	DESCRIPTION	DATE	APPROVED

- NOTES:
1. CONDUIT BOX MAY BE PLACED WITH THE ENTRANCE DOWN, UP OR ON EITHER SIDE.
 2. F-I ASSEMBLY AS SHOWN.
 3. ALL DIMENSIONS ARE IN INCHES.

MODEL	SIGNATURES	DATE	<p>GENERAL ELECTRIC COMPANY</p> <p>OUTLINE</p> <p>QUANTUM 5012/5013 TFC</p> <p>5700 CU IN CONDUIT BOX, ACC. BOX, PROV FOR BTD</p> <p>239C6C00HC</p>
SERIAL	VIEW	01/07/15	
ORDER	VIEW	01/07/15	
DESIGN	VIEW	01/07/15	
QUALITY	VIEW	01/07/15	
ISSUED	VIEW	01/07/15	SCALE: 0.125
SHEET DRAWING			REF. NO. 239C6C00G1
SHEET 0			SHEET 1 OF 1

Marks:

Connection Diagram
GEM2034E-FIG20



Heater Connection
3027JE-1C

