

Product Information Packet

November 9, 2016

Data shown is for the current revision model #. Ensure your nameplate model # matches.

Model Number:	5KS449LAA262A
Catalog Number:	M7679
Instruction Manual:	GEI-56128
Connection Diagram:	GEM2034E-FIG20
Outline Drawing:	239CC800AG

Accessory Connection Diagrams			
Bearing Thermocouple:	None	Heater:	None
RTD:	None	Thermistor:	None
Thermostat:	None	Winding Thermocouple:	None
Bearing RTD:	None		

Table of Contents	
Specification	01
Performance Characteristics	02
Outline Drawing	03
Connection Drawing(s)	04

Marks:

MODEL NUMBER:	5KS449LAA262A	Estimated Weight:	2910 Lbs
Outline Drawing:	239CC800AG	Time Rating:	CONT
Connection Diagram:	GEM2034E-FIG20	Enclosure:	TEFC
Instruction Book:	GEI-56128	Encl Construction:	SD
Design Code:	49BD1174A	Ambient Max(°C):	40
Type:	KS	Alt Ambient Max(°C):	--
Frame:	449T	Insulation Class:	F
Phases:	3	NEMA Design:	A
Poles:	4	Nominal Efficiency:	96.2 %
Output Power:	300HP 222KW	Guaranteed Efficiency:	95.4
RPM:	1790	3/4 Load Efficiency:	96.2
Voltage:	460	KVA Code:	J
Hertz:	60	Max KVAR:	102.0
Amps - FL:	347.0	Power Factor:	84.0
Service Factor:	1.15	Bearing - DE:	NU 318
Alt Service Factor:	--	Bearing - ODE:	6318ZC3S0

Enclosure is Totally Enclosed Fan-Cooled

Stamped Nameplate Notes:

ROLLER BEARING - FOR BELTED LOAD ONLY
 INVERTER DUTY PER NEMA MG1 PART 31
 ALTERNATE RATING FOR PWM CONTROL:
 1.0 SF VAR TORQUE RANGE 0-60 HZ

Additional Information:

4P - T EXTN - SPLIT LEAD
 1260 CU IN - 2(4.00" NPT)
 C/B GRD PLATE
 OIL RESISTANT SLEEVING ON LEADS
 B5F4C4 HIGH FATIGUE STEEL AISI 4142 SHAFT MATERIAL
 F1 MOUNTING
 VIBRATION LIMIT 0.0016 INCH PEAK TO PEAK

Performance Characteristics

1st Winding 1st Connection

Design: 49BD1174A

Marks:

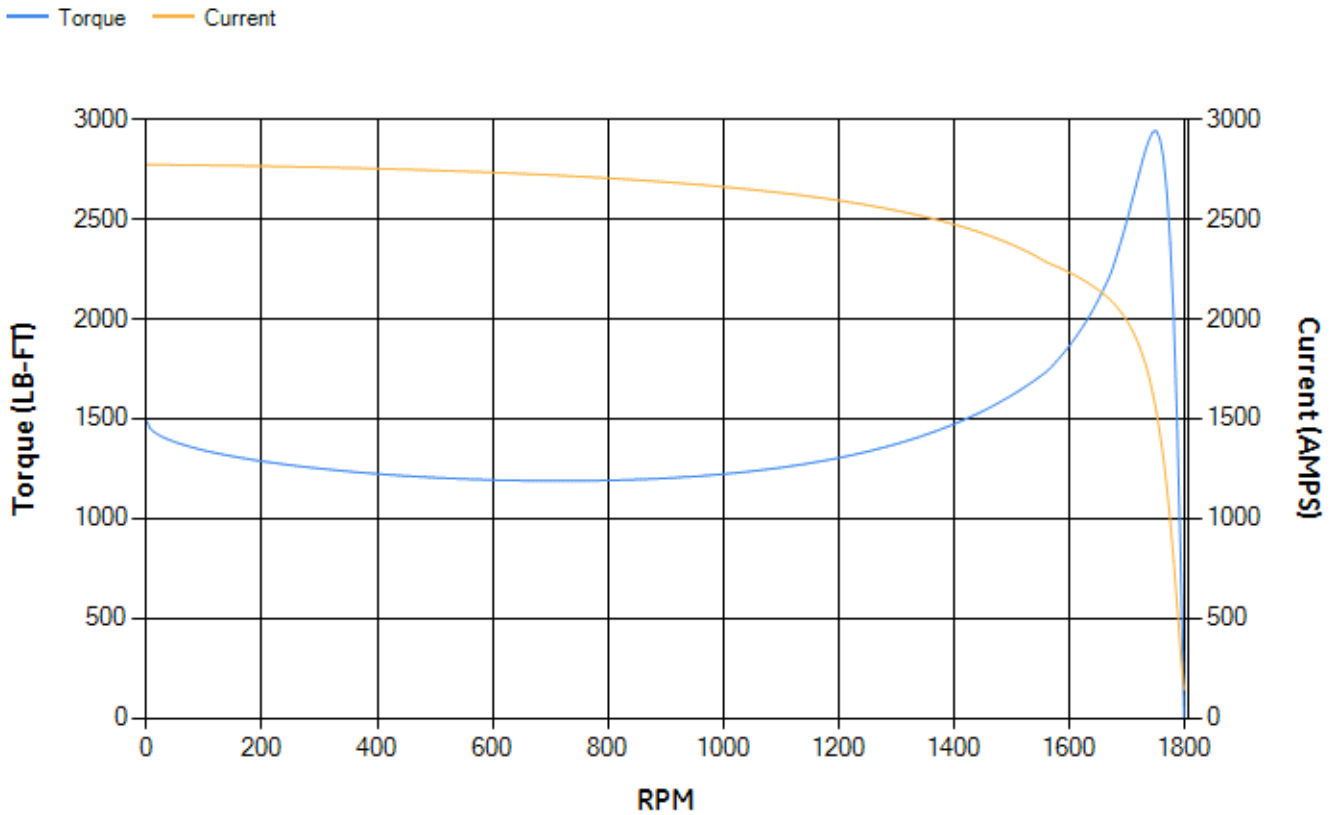
LOAD %	125.0	115.0	100.0	75.0	50.0	25.0	0.0
% EFF	95.85	95.98	96.33	96.18	95.71	93.36	0.00
% PF	86.22	85.52	83.96	79.14	68.74	45.77	3.04
AMPS	424.67	393.36	347.19	276.67	213.37	164.27	141.78

TORQ(FL)#FT	878.68	TORQ(LR)%FL	169.31	TORQ(BD)%FL	334.79
AMPS(LR)	2773.01	PF AT START	0.25		

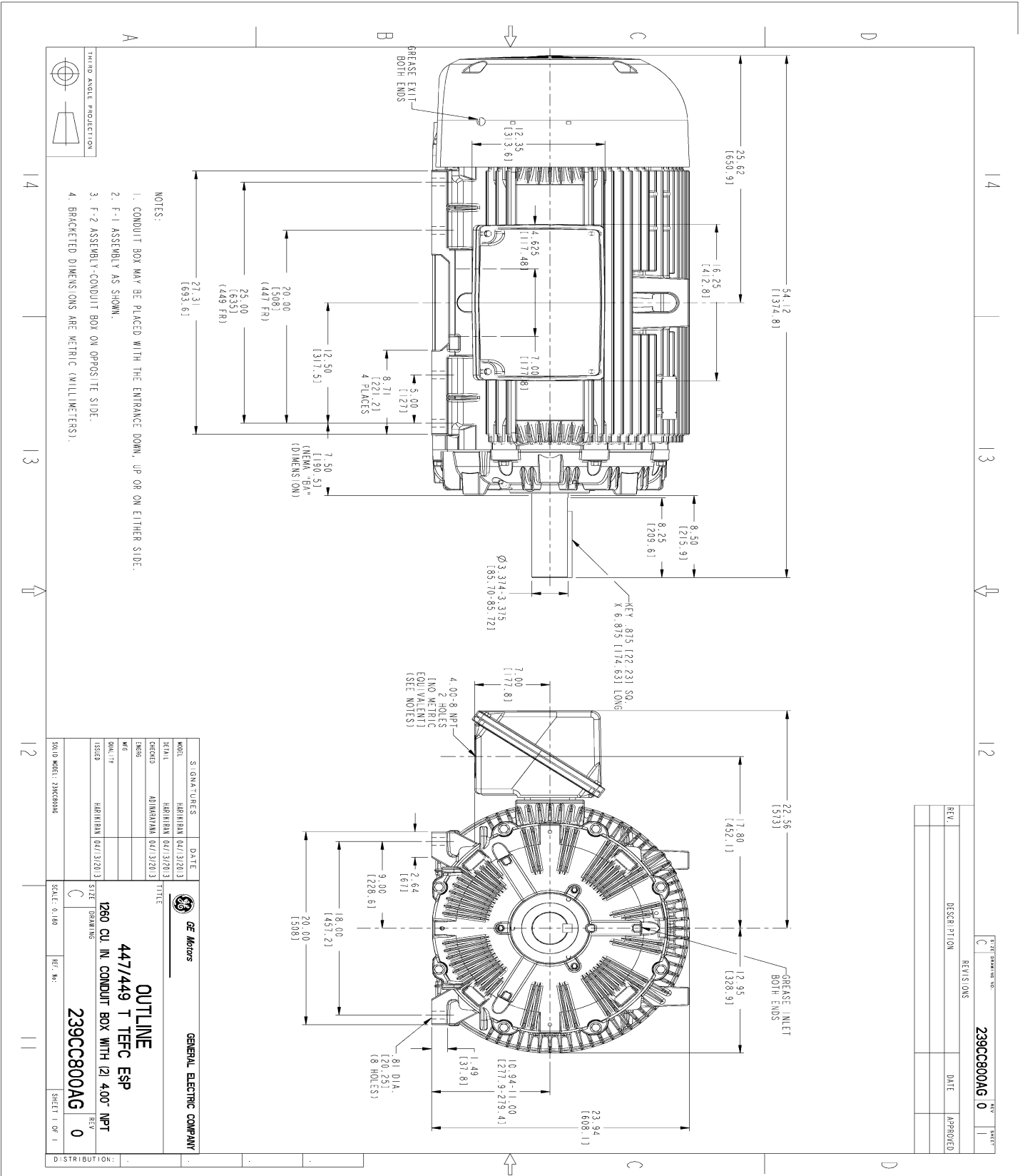
This motor is capable of two cold or one hot start with a maximum connected load inertia of 4700 Lb-Ft Sq (197.87 Kg-meter Sq)at 100% voltage, where the load torque varies with the square of the speed. Acceleration time with maximum inertia and the above load type is 25 seconds. Safe stall time at 100% voltage is 71 seconds cold, 38 seconds hot. Rotor inertia is 119.8 Lb-Ft Sq (5.04 Kg-meter Sq).

Open Circuit A-C:	1.457	Short Circuit D-C:	0.025
Short Circuit A-C:	0.067	X/R Ratio:	9.506
Stator Slots:	72	Rotor Slots:	58

Speed Torque Current Curve (First Connection, First Speed)

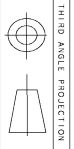


Marks:



NOTES:

1. CONDUIT BOX MAY BE PLACED WITH THE ENTRANCE DOWN, UP OR ON EITHER SIDE.
2. F-1 ASSEMBLY AS SHOWN.
3. F-2 ASSEMBLY- CONDUIT BOX ON OPPOSITE SIDE.
4. BRACKETED DIMENSIONS ARE METRIC (MILLIMETERS).



THIRD ANGLE PROJECTION

REV.	DESCRIPTION	DATE	APPROVED

SHEET NO. 0
REV. SHEET 1

239CC800AG 0

SIGNATURES	DATE	GENERAL ELECTRIC COMPANY
HARRMAN (2/13/2013)		
HARRMAN (2/13/2013)		
HARRMAN (2/13/2013)		
HARRMAN (2/13/2013)		
HARRMAN (2/13/2013)		

GE Motors
OUTLINE
447/449 T TEFC ESP
1260 CU IN CONDUIT BOX WITH 12 400 NPT

ISSUED	HARRMAN (2/13/2013)	SIZE	C
REV		DRAWING	0

SCALE: 0.180	REF. NO.	SHEET 1 OF 1
--------------	----------	--------------

Marks:

Connection Diagram
GEM2034E-FIG20

