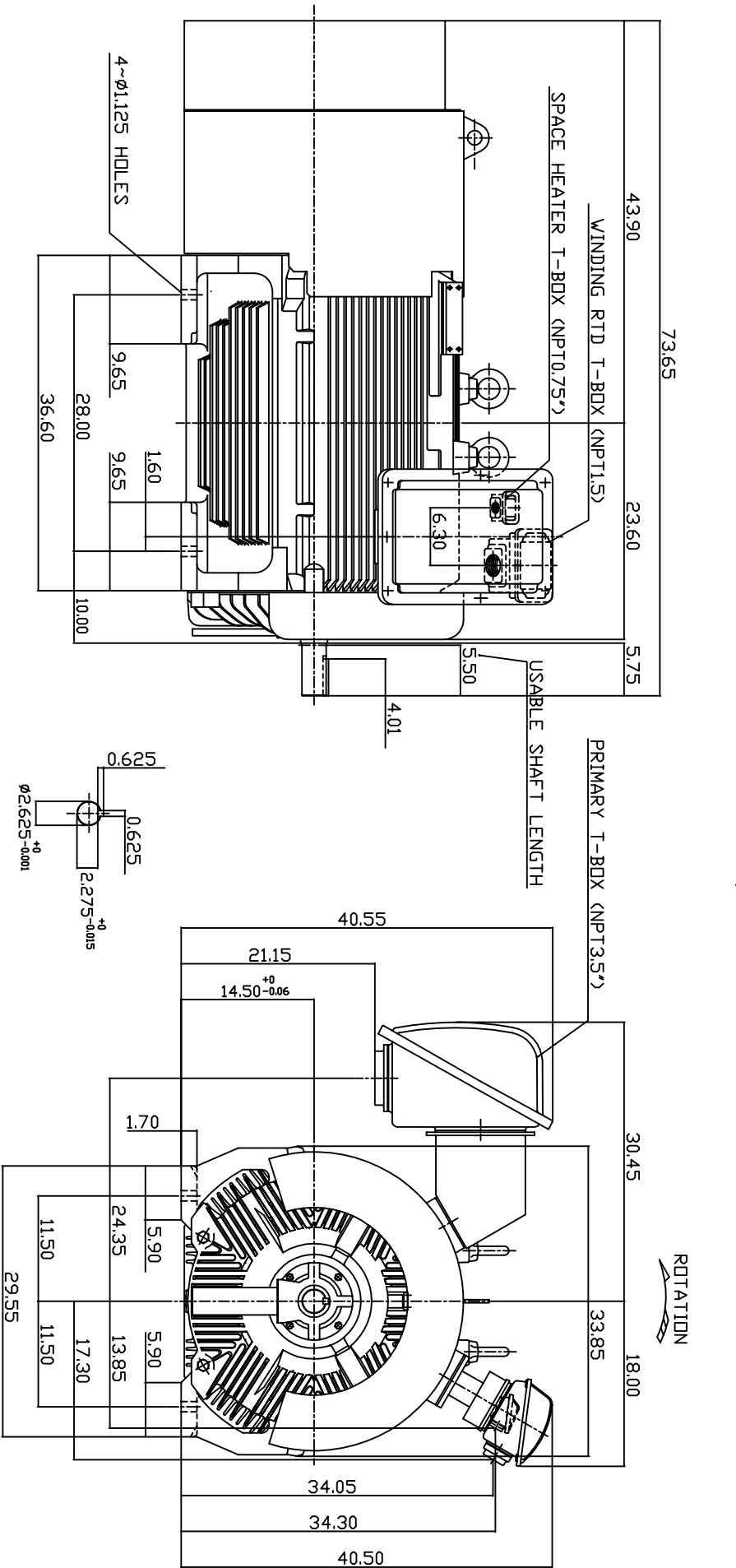


TYPE	OUTPUT		POLE	TIME RATING	VOLTAGE V	HZ	SYN SPEED R.P.M
	HP.	KW.					
AEHGTK	500	373	2	CONT.	2300/4160	60	3600

TOTALLY ENCLOSED FAN-COOLED TYPE, SQUIRREL-CAGE ROTOR



- NOTE:
- DIMENSIONS IN INCH.
 - FRAME NO. 5808A
 - F CLASS INSULATION, SF115
 - FOR DIRECT FLEXIBLE COUPLING
 - WITH SPACE HEATER 120 VOLT SINGLE PHASE 300 WATTS
 - 100 OHM PLATINUM WINDING RTD'S 2/PHASE
 - BEARING SIZE: DRIVE END: 6315C3
NON-DRIVE END: 6315C3
 - MOTOR APPROX. WEIGHT: 4700 LBS

TW-66C

DWN.	W.LLIN	APR-17-2003
CHKD.	W.LLIN	APR-17-2003
APPD.	C.WANG	APR-17-2003

DATE	OUTLINE DIMENSIONS
MAY 6, 2004	3-PHASE INDUCTION MOTOR
CATALOG NO. KG5002	

TEC Westinghouse DVG NO. 3A040T4570 REV. 00