

# Product Information Packet

November 9, 2016

Data shown is for the current revision model #. Ensure your nameplate model # matches.

<b>Model Number:</b>	<b>5KS143STE222A</b>
<b>Catalog Number:</b>	<b>M7738</b>
<b>Instruction Manual:</b>	GEI-M1031
<b>Connection Diagram:</b>	GEM2034E-FIG203
<b>Outline Drawing:</b>	358B6275AB

Accessory Connection Diagrams			
<b>Bearing Thermocouple:</b>	None	<b>Heater:</b>	None
<b>RTD:</b>	None	<b>Thermistor:</b>	None
<b>Thermostat:</b>	None	<b>Winding Thermocouple:</b>	None
<b>Bearing RTD:</b>	None		

Table of Contents	
Specification	01
Performance Characteristics	02
Outline Drawing	03
Connection Drawing(s)	04

**Marks:**

<b>MODEL NUMBER:</b>	<b>5KS143STE222A</b>	<b>Estimated Weight:</b>	56 Lbs
<b>Outline Drawing:</b>	358B6275AB	<b>Time Rating:</b>	CONT
<b>Connection Diagram:</b>	GEM2034E-FIG203	<b>Enclosure:</b>	TEFC
<b>Instruction Book:</b>	GEI-M1031	<b>Encl Construction:</b>	SD
<b>Design Code:</b>	14AD1011A	<b>Ambient Max(°C):</b>	40
<b>Type:</b>	KS	<b>Alt Ambient Max(°C):</b>	--
<b>Frame:</b>	143TC	<b>Insulation Class:</b>	F
<b>Phases:</b>	3	<b>NEMA Design:</b>	B
<b>Poles:</b>	4	<b>Nominal Efficiency:</b>	85.5 %
<b>Output Power:</b>	1HP 0.7KW	<b>Guaranteed Efficiency:</b>	82.5
<b>RPM:</b>	1750	<b>3/4 Load Efficiency:</b>	88.0
<b>Voltage:</b>	230/460	<b>KVA Code:</b>	N
<b>Hertz:</b>	60	<b>Max KVAR:</b>	0.5
<b>Amps - FL:</b>	2.8/1.4	<b>Power Factor:</b>	76
<b>Service Factor:</b>	1.15	<b>Bearing - DE:</b>	6205ZZC3
<b>Alt Service Factor:</b>	--	<b>Bearing - ODE:</b>	6205ZZC3

**Enclosure is Totally Enclosed Fan-Cooled**

---

**Stamped Nameplate Notes:**

USABLE AT 200V @ 1 HP, 3.1 AMPS @ 1.0 SF

LRA: 22.4/11.2

50HZ DATA: .75 HP,200/400V, 2.8/1.4 AMPS @ 1.15 SF

50HZ DATA: 1 HP, 200/400V, 3.2/1.6 AMPS @ 1.00 SF

GREASE TYPE: SHELL ALVANIA R3 LITHIUM GREASE

**Additional Information:**

CONDUIT BOX MATERIAL: CAST IRON

SUITABLE FOR USE IN CLASS I DIVISION 2 LOCATIONS

CLASS I DIVISION 2 GROUPS A,B,C,D T3C

CLASS I ZONE 2 IIC T3C

**Performance Characteristics**

1st Winding 1st Connection

**Design: 14AD1011A**

Marks:

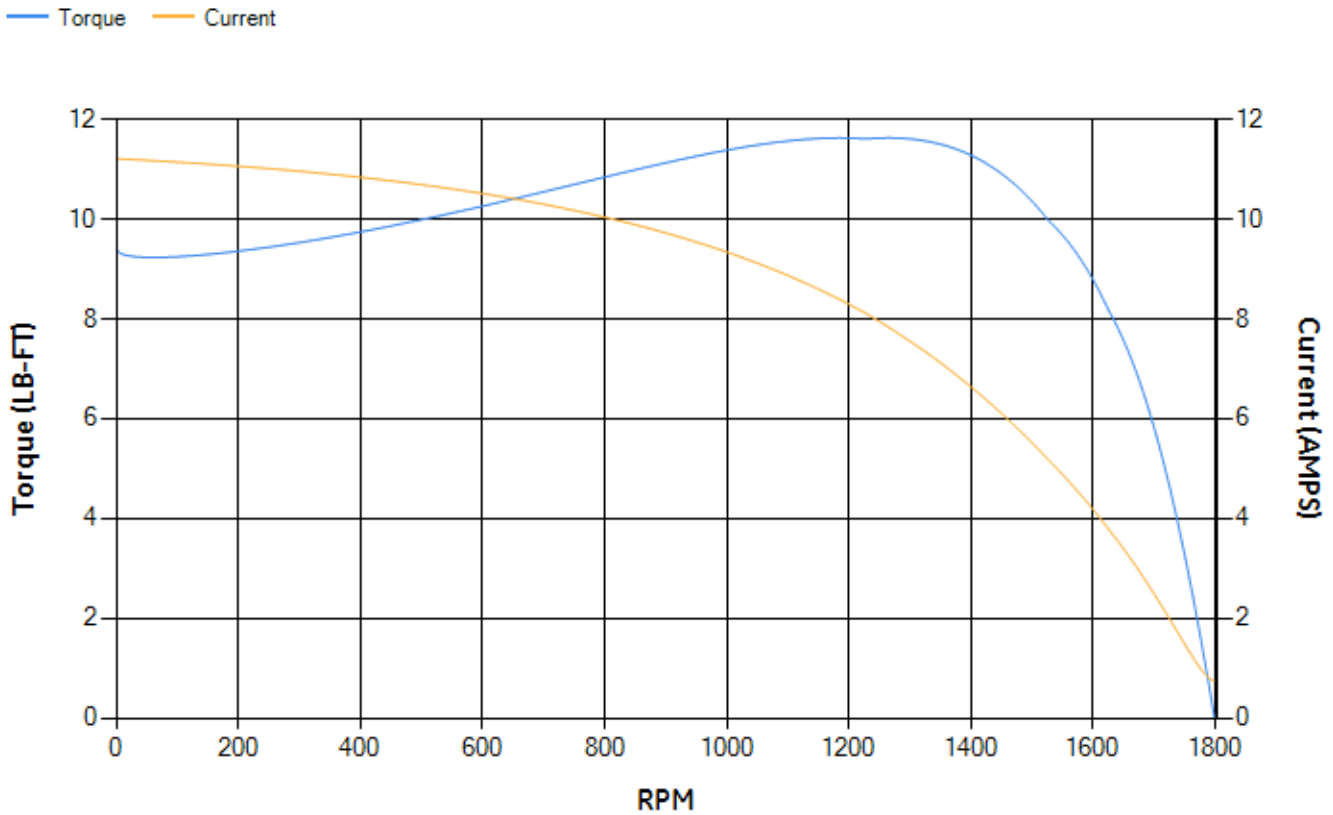
LOAD %	125.0	115.0	100.0	75.0	50.0	25.0	0.0
% EFF	87.6	87.91	88.39	87.99	86.1	78.69	0.00
% PF	80.45	79.04	76.26	69.03	56.64	36.38	7.66
AMPS	1.66	1.55	1.39	1.16	0.96	0.82	0.75

TORQ(FL)#FT	3	TORQ(LR)%FL	313.29	TORQ(BD)%FL	382.02
AMPS(LR)	11.21	PF AT START	0.53		

This motor is capable of two cold or one hot start with a maximum connected load inertia of 74 Lb-Ft Sq (3.12 Kg-meter Sq) at 100% voltage, where the load torque varies with the square of the speed. Acceleration time with maximum inertia and the above load type is 47 seconds. Safe stall time at 100% voltage is 112 seconds cold, 94 seconds hot. Rotor inertia is 0.1 Lb-Ft Sq (0 Kg-meter Sq).

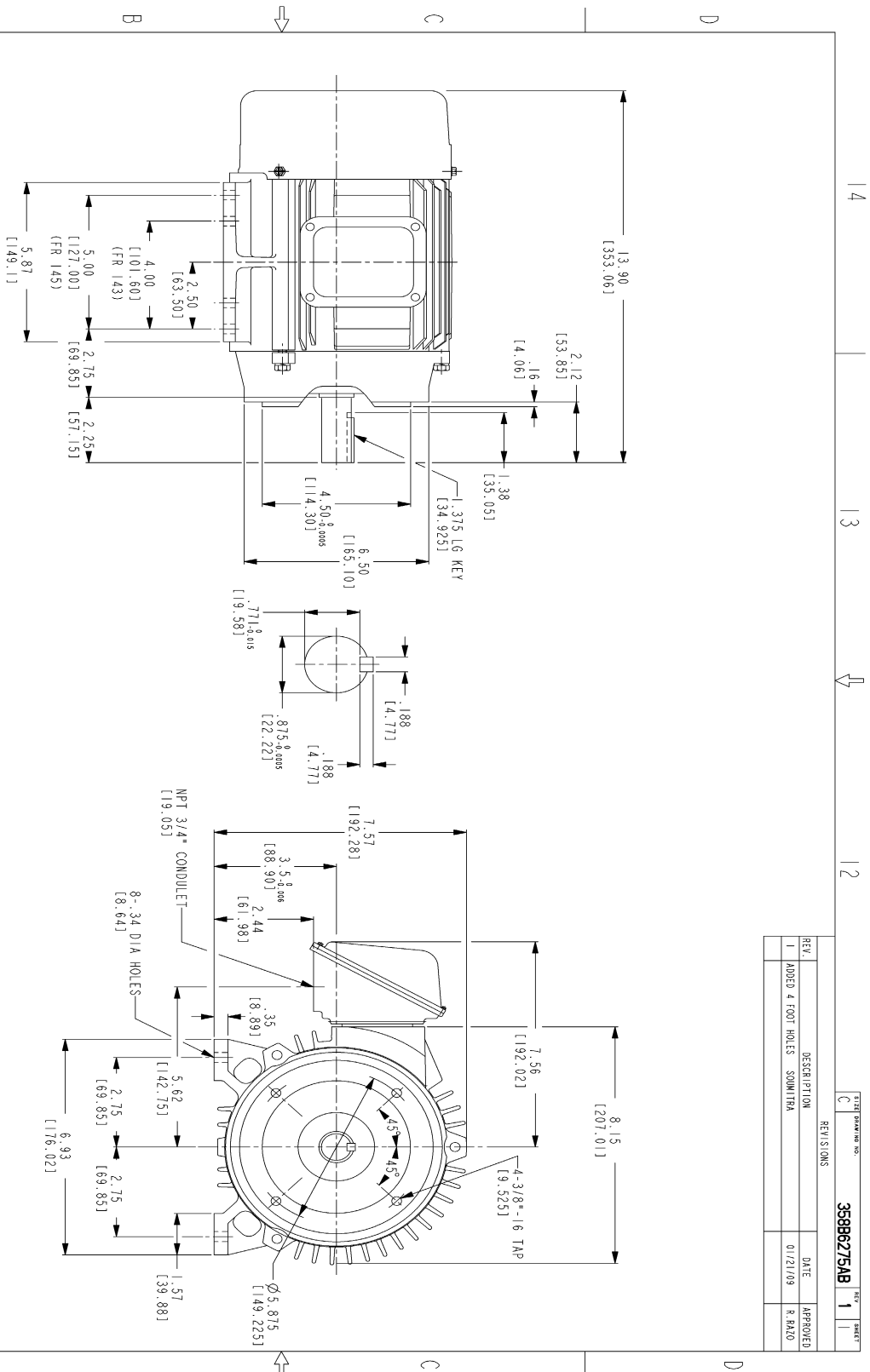
Open Circuit A-C:	0.157	Short Circuit D-C:	0.008
Short Circuit A-C:	0.008	X/R Ratio:	2.85
Stator Slots:	36	Rotor Slots:	28

Speed Torque Current Curve (First Connection, First Speed)



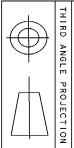
NAME:501452442 OBJECT:358B6275AB DATE:22-Jan-09 11:30:49

Marks:



NOTES:

1. DIMENSIONS ARE IN INCHES.
2. F-1 ASM AS SHOWN.
3. F-2 ASM - HAS CONDUIT BOX ON OPPOSITE SIDE.
4. BRACKETED DIMENSIONS ARE METRIC (MILLIMETERS)
5. ICA11, IP94, IMB34 APPLY.



Part must conform to SI 900000 Sect. 4, Toxicity Procedure

FOR ADDITIONAL INFO REFER TO:		SIGNATURES		DATE	
REFLECTED DIMENSIONS	DETAIL				
UNLESS OTHERWISE SPECIFIED	SOONITRA			12/18/07	
DIMENSIONS ARE IN INCHES	SKALNY			12/18/07	
TOLERANCE ON:	SKALNY			12/18/07	
1 PL DECIMALS ±	R KOHLE			12/18/07	
2 PL DECIMALS ±					
3 PL DECIMALS ±					
ANGLES ±					
FRACTIONS ±					
FINISH	SOONITRA			12/18/07	
MATERIAL					
SOLID MODEL MODEL NAME					

REV	DESCRIPTION	DATE	APPROVED
1	ADDED 4 FOOT HOLES SOONITRA	01/21/09	R. PALO

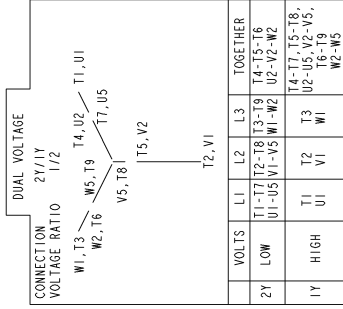
358B6275AB 1 1

GE Consumer & Industrial  
**OUTLINE**  
 FTD - K3TC/H3TC TERC CE MARK  
 471 CU IN CONDUIT BOX

358B6275AB 1  
 SHEET 1 OF 1

Marks:

**Connection Diagram**  
**GEM2034E-FIG203**



NAME: 500903578 OBJECT: GEM2034E-FIG203 DATE: 03-Nov-06 13:53:10