

# Product Information Packet

November 9, 2016

Data shown is for the current revision model #. Ensure your nameplate model # matches.

<b>Model Number:</b>	<b>5KS326SAA114D8</b>
<b>Catalog Number:</b>	<b>M9839</b>
<b>Instruction Manual:</b>	GEI-56128
<b>Connection Diagram:</b>	GEM2034E-FIG7
<b>Outline Drawing:</b>	239C6000AF

<b>Accessory Connection Diagrams</b>			
<b>Bearing Thermocouple:</b>	None	<b>Heater:</b>	None
<b>RTD:</b>	None	<b>Thermistor:</b>	None
<b>Thermostat:</b>	None	<b>Winding Thermocouple:</b>	None
<b>Bearing RTD:</b>	None		

## Table of Contents

Specification	01
Performance Characteristics	02
Outline Drawing	03
Connection Drawing(s)	04
Spare parts	05



**Marks:**

<b>MODEL NUMBER:</b>	<b>5KS326SAA114D8</b>	<b>Estimated Weight:</b>	670 Lbs
<b>Outline Drawing:</b>	239C6000AF	<b>Time Rating:</b>	CONT
<b>Connection Diagram:</b>	GEM2034E-FIG7	<b>Enclosure:</b>	TEFC
<b>Instruction Book:</b>	GEI-56128	<b>Encl Construction:</b>	X\$D
<b>Design Code:</b>	32BD0112B	<b>Ambient Max(°C):</b>	40
<b>Type:</b>	KS	<b>Alt Ambient Max(°C):</b>	55
<b>Frame:</b>	326TS	<b>Insulation Class:</b>	H
<b>Phases:</b>	3	<b>NEMA Design:</b>	B
<b>Poles:</b>	2	<b>Nominal Efficiency:</b>	93.0 %
<b>Output Power:</b>	50HP 37KW	<b>Guaranteed Efficiency:</b>	92.4
<b>RPM:</b>	3565	<b>3/4 Load Efficiency:</b>	93.9
<b>Voltage:</b>	575	<b>KVA Code:</b>	G
<b>Hertz:</b>	60	<b>Max KVAR:</b>	15.6
<b>Amps - FL:</b>	46.8	<b>Power Factor:</b>	86.0
<b>Service Factor:</b>	1.15	<b>Bearing - DE:</b>	6312ZC3
<b>Alt Service Factor:</b>	1.00	<b>Bearing - ODE:</b>	6312ZC3

**Enclosure is Totally Enclosed Fan-Cooled**

**Stamped Nameplate Notes:**

STAMP NP249A5564P051 AS BELOW:  
 MODEL:5KS326SAA114D8 S/N: XXX  
 CSA CERTIFIED CSA09.2216219 FOR EX NA IIC 200 C GC  
 CL 1 ZONE2 AEX NA IIC 200C;CL 1 DIV2 GRP ABCD 200C  
 IN -40C <= AMB <= 40C, 1.0 SF ON SINE-WAVE PWR  
 SURF TEMP 260C AT 1.15SF ON SINE-WAVE PWR  
 OR 215C VT OR 230C CT OR 215C CHP PWM CONTROL  
 ALTERNATE RATING FOR PWM CONTROL 1.0SF 40C AMB  
 VT 0-60 HZ, CT 30-60 HZ, CHP 60-75 HZ.

**Additional Information:**

2P - TS EXTN  
 346 CU IN - 3.00" NPT  
 OIL RESISTANT SLEEVING ON LEADS  
 F1 MOUNTING

**Performance Characteristics**

1st Winding 1st Connection

**Design: 32BD0112B**

**Marks:**

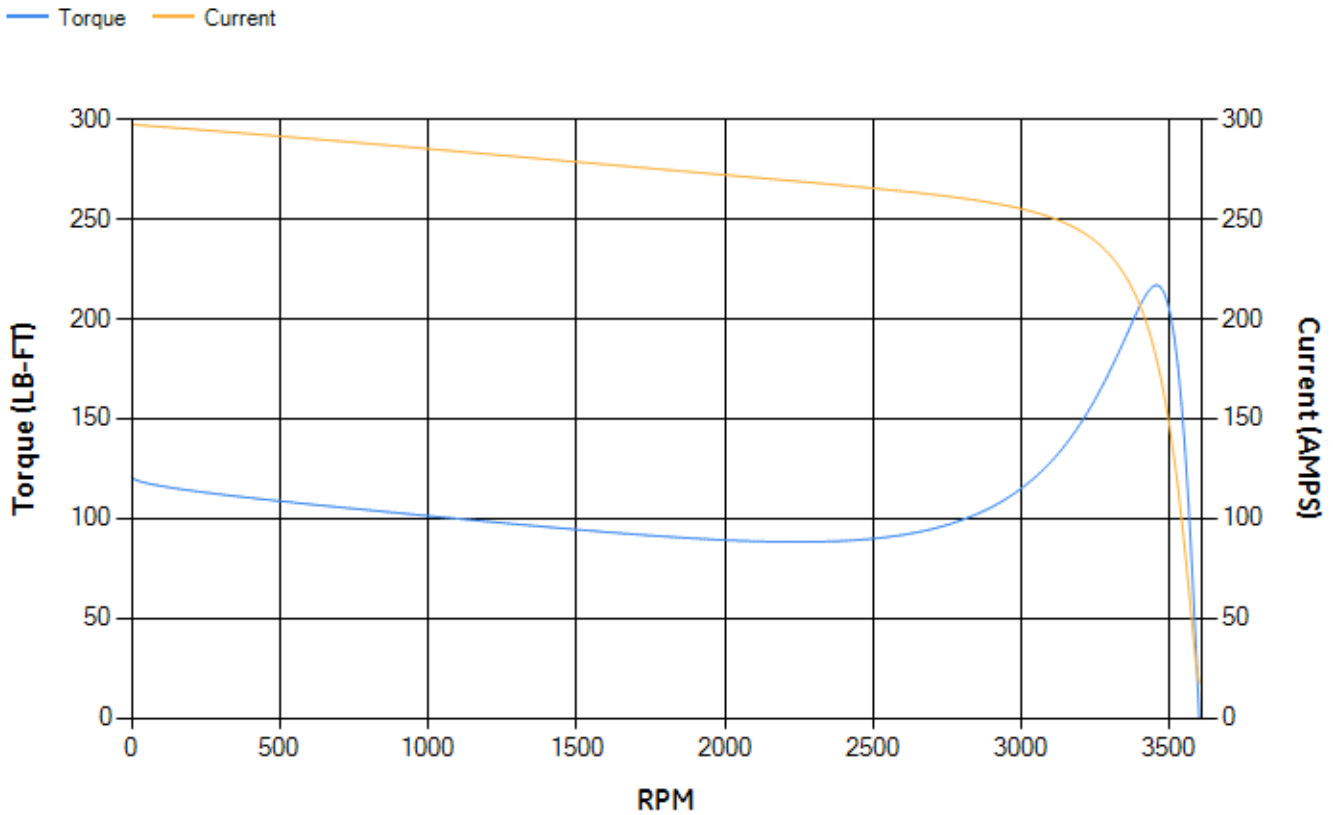
LOAD %	125.0	115.0	100.0	75.0	50.0	25.0	0.0
% EFF	93.34	93.56	94.01	93.9	93.15	89.46	0.00
% PF	87.46	86.97	85.77	81.75	72.51	50.46	5.43
AMPS	57.33	52.91	46.38	36.58	27.71	20.73	17.36

TORQ(FL)#FT	73.62	TORQ(LR)%FL	164.23	TORQ(BD)%FL	294.42
AMPS(LR)	297.42	PF AT START	0.3		

This motor is capable of two cold or one hot start with a maximum connected load inertia of 134 Lb-Ft Sq (5.64 Kg-meter Sq) at 100% voltage, where the load torque varies with the square of the speed. Acceleration time with maximum inertia and the above load type is 19 seconds. Safe stall time at 100% voltage is 44 seconds cold, 23 seconds hot. Rotor inertia is 4.06 Lb-Ft Sq (0.17 Kg-meter Sq).

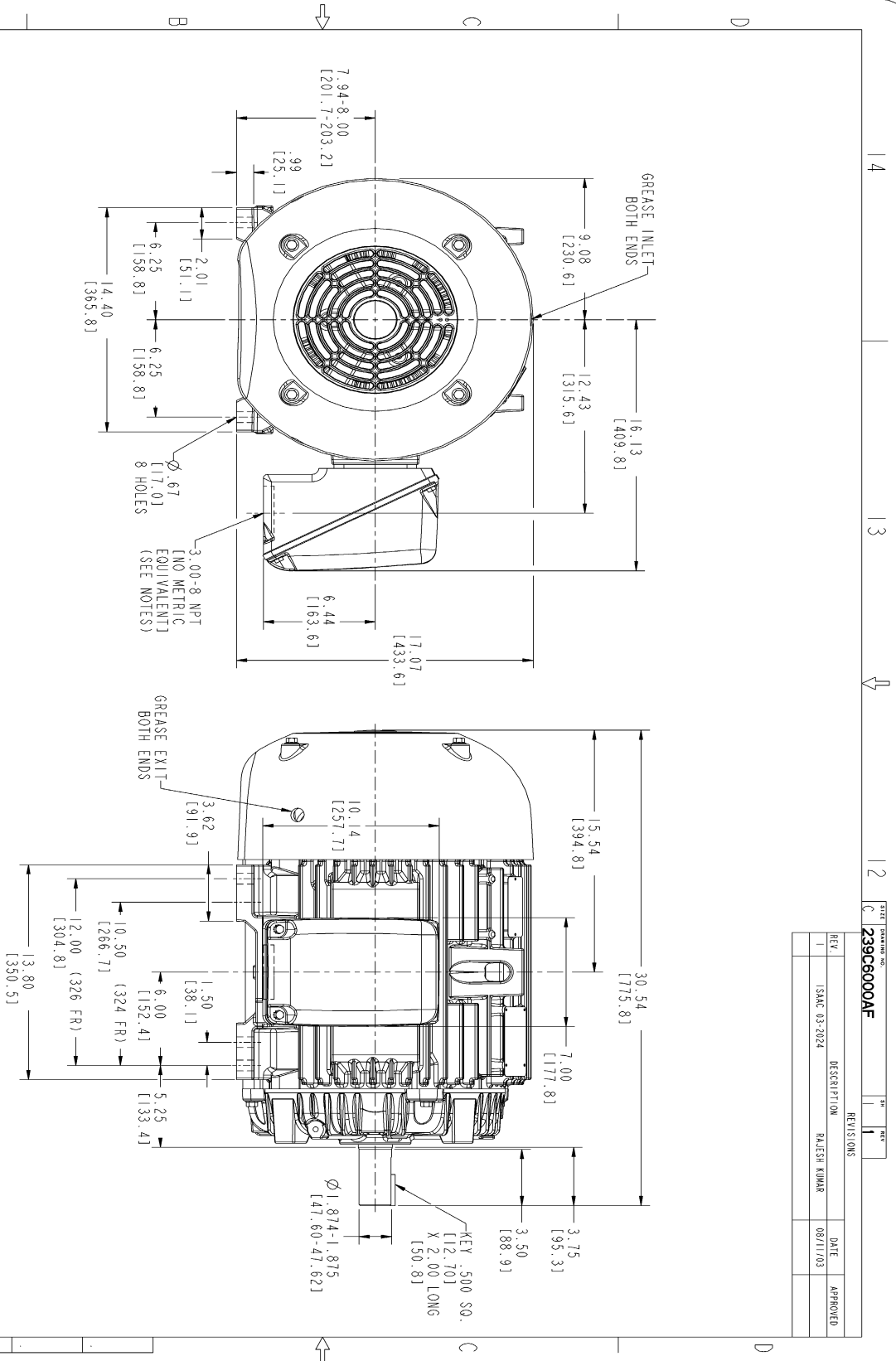
Open Circuit A-C:	0.713	Short Circuit D-C:	0.019
Short Circuit A-C:	0.04	X/R Ratio:	7.069
Stator Slots:	48	Rotor Slots:	38

**Speed Torque Current Curve (First Connection, First Speed)**



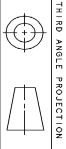
NAME: 103016807 OBJECT: 239C6000AF DATE: 12-Aug-03 15:47:45

Marks:



- NOTES:
- CONDUIT BOX MAY BE PLACED WITH THE ENTRANCE DOWN, UP OR ON EITHER SIDE.
  - F-1 ASM AS SHOWN.
  - F-2 ASM HAS CONDUIT BOX ON OPPOSITE SIDE.
  - BRACKETED DIMENSIONS ARE METRIC (MILLIMETERS).

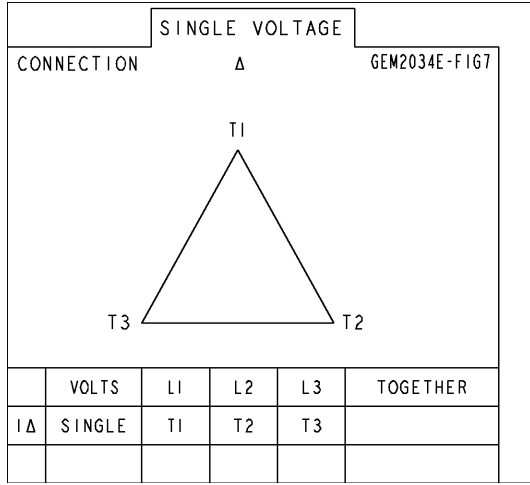
DRAWING NO.		REVISIONS		DATE	
239C6000AF					
REV.	DESCRIPTION	RAJESH KUMAR	08/11/03	APPROVED	
1	ISSAC 03-2024				



SIGNATURES	DATE	GENERAL ELECTRIC COMPANY	
DESIGNER	03/31/02	 <b>OUTLINE</b> 324/326TS TFFC 346 CU. IN. CONDUIT BOX	
DRAWN	03/31/02		
CHECKED	03/31/02	Fort Wayne, Indiana	
DATE	03/31/02	APPLIED PRACTICES	
DATE	03/31/02	SCALE: 0.250 REF. NO:	
SHEET DRAWING		SHEET NO. 1	
239C6000AF		DISTRIBUTION: MMP	

Marks:

**Connection Diagram**  
**GEM2034E-FIG7**



End shield Assembly		
Part Description	DE Side Part#	ODE Side Part#
End Shield	115E4200AA1	115E4200LA1
Bearing	235A2609AA01	235A2609AA01
Slinger/Inproseal	149C4399G04	149C4399G04

Fan & Fan Cover Assembly	
Part Description	Part#
Fan	159C6700G02
Fan Cover	128D6800AA1

Conduit & Accessories Box Assembly	
Part Description	Part#
Conduit Box	149C4429AA2

Mechanical Accessories	
Part Description	Part#
Brake	
Tachometer	