

4

3

2

1

GENERAL INFORMATION:

SHAFT RUNOUT: .001 [.03] T.I.R. PER INCH LENGTH OF EXTENSION

BEARINGS: BALL

MOUNTING POSITION: HORIZONTAL OR VERTICAL SHAFT-UP

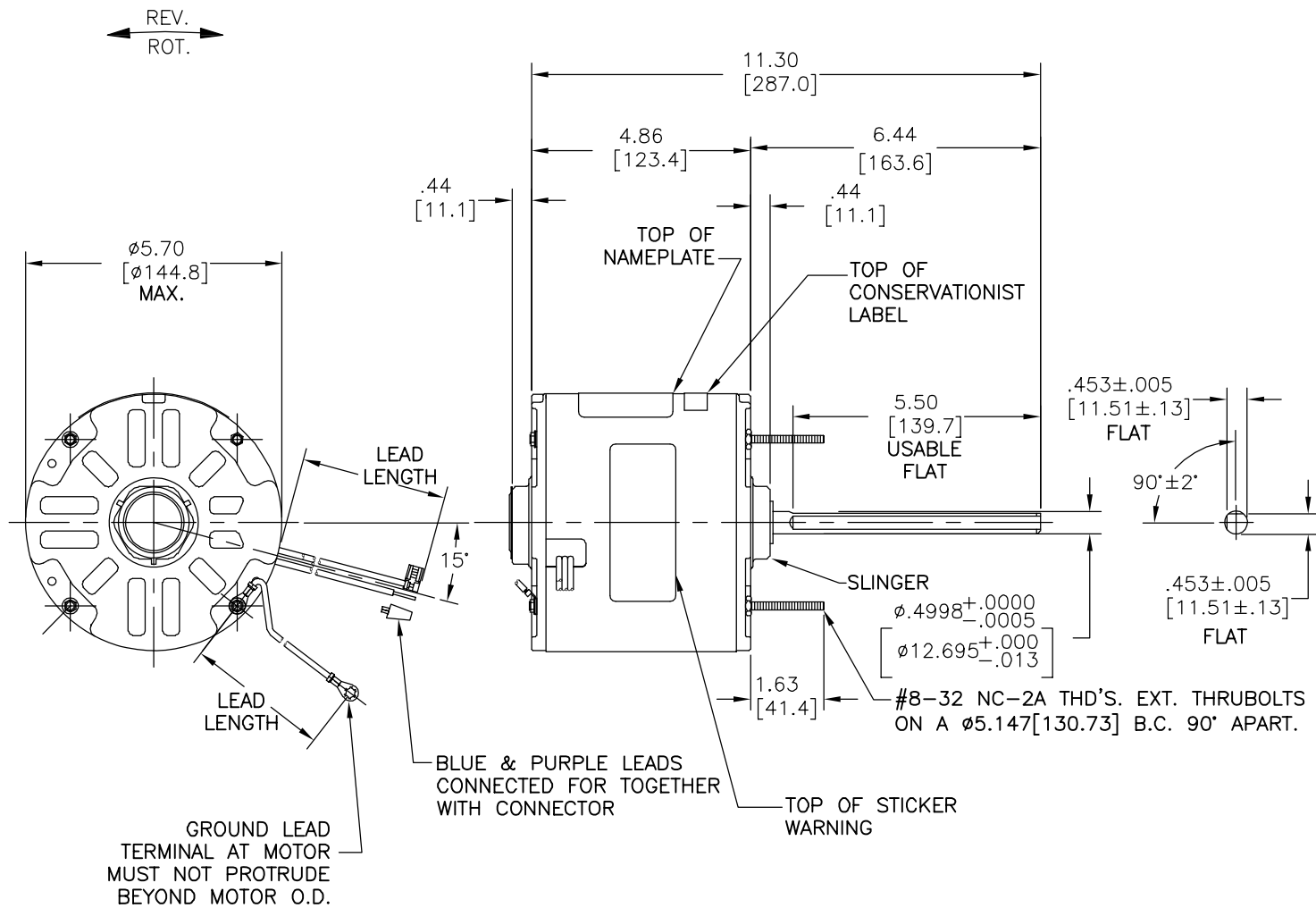
ELECTRICAL DATA:

OVERLOAD PROTECTOR: AUTOMATIC RESET (T.I. 7AM 036)

LINE LEADS: NO. 18 GA., .06 [1.5] THK.PVC 105°C INSUL.

GROUND LEAD: NO. 18 GA., .03 [.8] THK. (GREEN) INSUL.

REV	ECO	REV BY	DATE	APPD	DATE
B	0025548	I. ORTIZ	04-27-2012	D. BALDERRAMA	04-27-2012

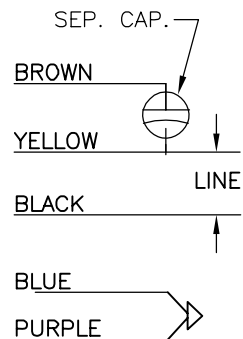


SEE NOTE 1

NAMEPLATE DATA:

EXTERNAL CONNECTION DIAGRAM

MODEL NO.: F48U73A01
CUST. P/N:
HP: 1/3
ROT.: REVERSIBLE
RPM: 825
TYPE: UF
FRAME: 48Y
VOLTS: 115
PH: 1
AMPS: 4.8
HZ: 60
INS.: B
AMB.: 60°C
DUTY: AIR OVER
CAP.: 7.5 MFD/370 V
ENCL: SEMI-ENCL
UL LOGO
CSA LOGO
THERMALLY PROTECTED



SHOWN FOR CCWLE
ROT. FOR CWLE ROT.
INTERCHANGE
BLUE & BROWN
LEADS. 614131-043

GREEN GROUND	12.0/13.0 [305/330]	#10 EYELET
BROWN	26.0/28.0 [660/711]	.25 [6.4] FLAG
YELLOW	26.0/28.0 [660/711]	.75 [19.0] STRIP
BLACK	26.0/28.0 [660/711]	.75 [19.0] STRIP
PURPLE	26.0/28.0 [660/711]	.75 [19.0] STRIP
BLUE	26.0/28.0 [660/711]	.75 [19.0] STRIP
COLOR	LENGTH	TERMINAL OR STRIP LENGTH

NOTES:

1. DISTRIBUTION PART NUMBER: FL1038
GRAINGER PART NUMBER: 4MB71

MAIN FRAME - OLE	ENCLOSED
END FRAME - OLE	ENCLOSED
MAIN FRAME - LE	ENCLOSED
END FRAME - LE	OPEN

CUSTOMER	DISTRIBUTION SERVICE
----------	----------------------

PERFORMANCE CURVE NO.	TORQUE @ 825 RPM (25°C)	APPROVED SAMPLE	UL COMPONENT FILE #	GUIDE #	CSA FILE #	GUIDE #
C32233	38.6 OZ. FT.	0442394B	E46412	PRGY2	LR43341	260-φ-0

GEOMETRIC CHARACTERISTICS & SYMBOLS

□ FLATNESS
— STRAIGHTNESS
∠ ANGULARITY
⊥ PERPENDICULARITY (SQUARENESS)
// PARALLELISM
○ ROUNDNESS (CIRCULARITY)
⊘ CYLINDRICITY
△ PROFILE OF ANY SURFACE
⌒ PROFILE OF ANY LINE
↗ RUNOUT
⊕ TRUE POSITION
◎ CONCENTRICITY
≡ SYMMETRY

ASME Y14.5M 1994

REGAL-BELOIT CORPORATION (RBC) PROVIDES TECHNICAL ASSISTANCE TO OUR CUSTOMERS IN SEVERAL AREAS. SINCE RBC DOES NOT RECEIVE ALL DATA CONCERNING THE USE AND APPLICATION OF THE MOTOR, THE SUITABILITY OF THE MOTOR FOR THE APPLICATION MUST BE DETERMINED BY THE CUSTOMER.

DIMENSIONS WITHOUT TOLERANCES ARE FOR REFERENCE ONLY.

DR BY:

GORDON

05-28-2004

APPD:

PIATT

07-20-2004

THIRD ANGLE PROJECTION



EDS DATE 11-11-2011

FORMAT REV G

CONFIDENTIAL: THIS DRAWING AND ITS INFORMATION ARE THE EXCLUSIVE AND CONFIDENTIAL PROPERTY OF REGAL-BELOIT CORPORATION AND ARE NOT TO BE DISCLOSED, DUPLICATED, DISTRIBUTED OR OTHERWISE USED WITHOUT THE WRITTEN CONSENT OF REGAL-BELOIT CORPORATION. -ALL RIGHTS RESERVED.



REGAL-BELOIT CORPORATION

DESCRIPTION

MODEL-RFHP-48FR
OUTLINE

SIZE

C

DWG NO

11766-067

SCALE NONE

SHEET 1

4

3

2

1

4

3

2

1

INFORMACION GENERAL:

OSCILACION DE FLECHA: .001 [.03] L.T.I. LONG. DE EXTENSION POR PULGADA

BALEROS: BALINES

POSICION DEL MONTAJE: HORIZONTAL O VERTICAL FLECHA--ARRIBA

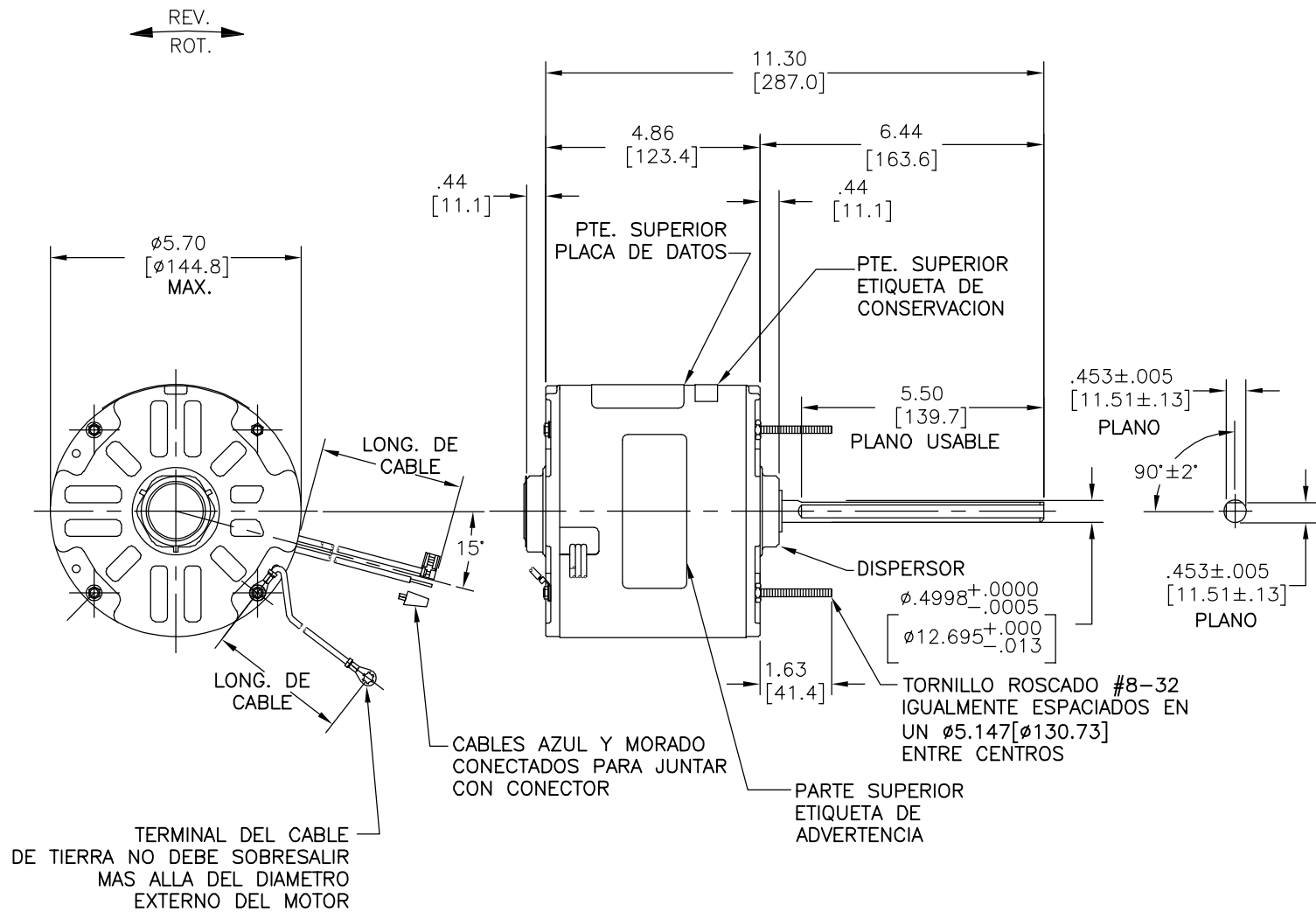
INFORMACION ELECTRICA:

SOBRECARGA DEL PROTECTOR: REINICIO AUTOMATICO (T.I. 7AM 036)

LINEA DE CABLES: CAL. NO. 18, .06 [1.5] ESP. PVC 105°C AISL.

CABLE DE TIERRA: CAL. NO. 18, .03 [.8] ESP. (VERDE) AISL.

REVISION:	ECO	REVISADO POR:	FECHA:	APROBADO POR:	FECHA:
B	0025548	I. ORTIZ	04-27-2012	D. BALDERRAMA	04-27-2012



VER NOTA 1

INFORMACION DE PLACA DE DATOS	DIAGRAMA DE CONEXION EXTERNA
MODEL NO.: F48U73A01 CUST. P/N: <input type="text"/> HP: 1/3 ROT.: REVERSIBLE RPM: 825 TYPE: UF FRAME: 48Y VOLTS: 115 PH: 1 AMPS: 4.8 HZ: 60 INS.: B AMB.: 60°C DUTY: AIR OVER CAP.: 7.5 MFD/370 V ENCL: SEMI-ENCL UL LOGO CSA LOGO THERMALLY PROTECTED	SEP. CAP. CAFE AMARILLO NEGRO AZUL MORADO LINEA MOSTRAR PARA ROT. CCWLE PARA ROT. CWLE INTERCAMBIAR CABLES AZUL Y CAFE. 614131-043

VERDE (TIERRA)	12.0/13.0 [305/330]	#10 OJAL
CAFE	26.0/28.0 [660/711]	.25[6.4] BANDERA
AMARILLO	26.0/28.0 [660/711]	.75 [19.0] DESFORRE
NEGRO	26.0/28.0 [660/711]	.75 [19.0] DESFORRE
MORADO	26.0/28.0 [660/711]	.75 [19.0] DESFORRE
BLUE	26.0/28.0 [660/711]	.75 [19.0] DESFORRE
COLOR	LONGITUD	TERMINAL O LONG. DE DESFORRE

NOTA:
1. NO. DE PARTE DE DISTRIBUCION: FL1038
NO. DE PARTE GRAINGER: 4MB71

INFORMACION DE CABLES

CARCAZA PPAL.- OLE	ENCERRADO
TAPA FINAL - OLE	ENCERRADO
CARCAZA PPAL.- LE	ENCERRADO
TAPA FINAL- LE	ABIERTO
TIPO DE MOTOR	

CLIENTE	DISTRIBUTION SERVICE
---------	----------------------

CARACTERISTICAS DE GEOMETRIA Y SIMBOLOS
□ PLANICIDAD
— RECTITUD
∠ ANGULARIDAD
⊥ PERPENDICULARIDAD (A ESCUADRA)
// PARALELISMO
○ REDONDEZ (CIRCULARIDAD)
⊘ CILINDRICIDAD
△ PERFIL DE CUALQUIER SUPERFICIE
∧ PERFIL DE CUALQUIER LINEA
↑ VARIACION
⊕ POSICION REAL
⊙ CONCENTRICIDAD
≡ SIMETRIA

REGAL-BELOIT CORPORATION (RBC)
PROVEE ASISTENCIA TECNICA A NUESTROS CLIENTES EN VARIAS AREAS. DESDE QUE RBC NO RECIBE TODOS LOS DATOS EN RELACION AL USO Y A LA APLICACION DEL MOTOR, LA APLICACION ADECUADA DEL MOTOR DEBE SER DETERMINADA POR EL CLIENTE.

DIMENSIONES SIN TOLERANCIA SON DE REFERENCIA SOLAMENTE

DIBUJADO POR: GORDON

05-28-2004

APROBADO POR: PIATT

07-20-2004

TERCER ANGULO DE PROYECCION



FECHA EDS: 11-11-2011
REV. FORMATO: G

CONFIDENCIAL: ESTE DIBUJO Y SU INFORMACION SON PROPIEDAD DE USO EXCLUSIVO Y CONFIDENCIAL DE REGAL-BELOIT CORPORATION. Y NO DEBERAN SER REVELADOS, DUPLICADOS, DISTRIBUIDOS O USARSE DE OTRA MANERA SIN EL CONSENTIMIENTO ESCRITO DE REGAL-BELOIT CORPORATION. -TODOS LOS DERECHOS RESERVADOS.



REGAL-BELOIT CORPORATION

DESCRIPCION:

MODEL-RFHP-48FR
OUTLINE

TAMAÑO: C

NUMERO DE DIBUJO: 11766-067

ESCALA: NONE

HOJA: 1

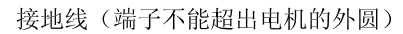
4

3

2

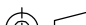
1


接地线: 18#(美制标准), 厚.03[0.8]绿色绝缘



无引线端机壳	密封
无引线端端盖	密封
有引线端机壳	密封
有引线端端盖	开启
密封性	

用户	DISTRIBUTION SERVICE
----	-------------------------

绘图:	GORDON	05-28-2004
批准:	PIATT	07-20-2004
第三角投影		图纸格式发布日期 11-11-2011 图纸格式版本 G
机密: 本图纸及相关信息所有权归REGAL-BELOIT CORPORATION 未经REGAL-BELOIT CORPORATION书面授权, 不得泄露、 复制、传播或作其他用途。一版权所有		

 REGAL-BELOIT CORPORATION		
名称		
MODEL-RFHP-48FR OUTLINE		
图幅	C	图号
比例		11766-067
NONE		页号 1

形位公差	平面度	
—	直线度	
∠	倾斜度	
⊥	垂直度	
∥	平行度	
○	圆度	
⊘	圆柱度	
△	轮廓度	度
↗	线轮廓度	度
⊕	跳动度	
⊙	位置度	
⊖	同轴度	
≡	对称度	

ASME Y14.5M 1994