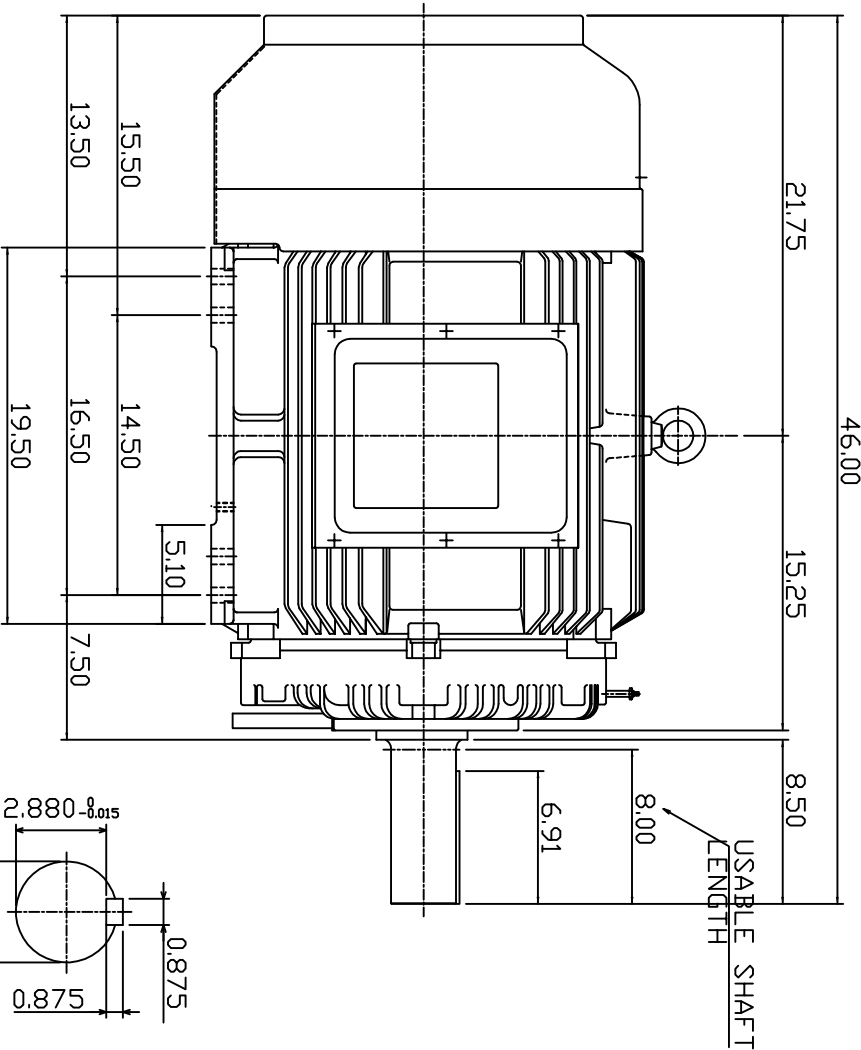
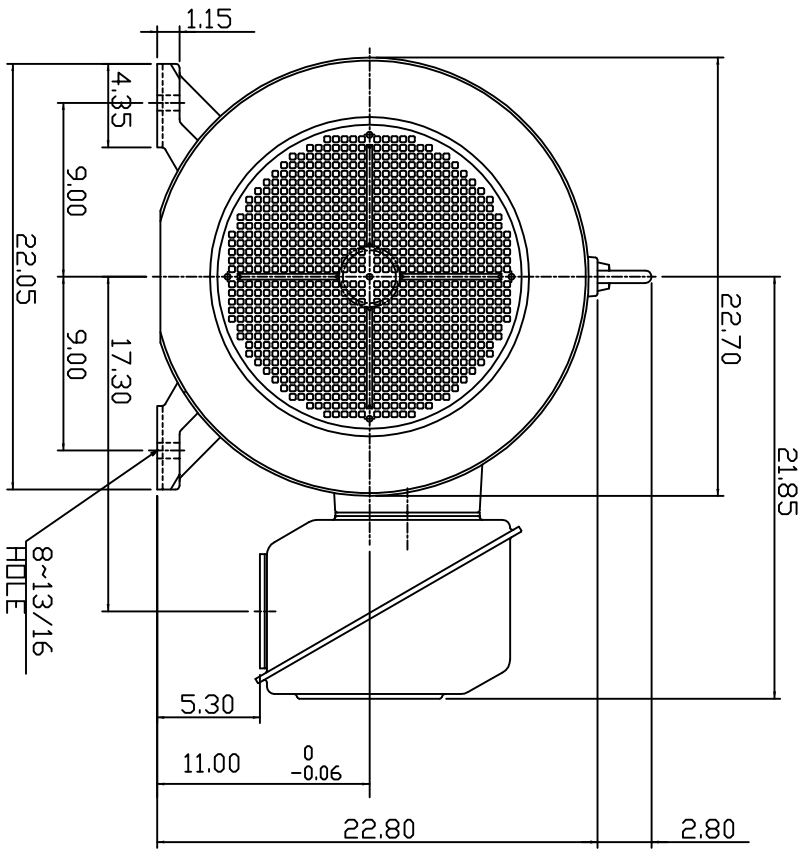
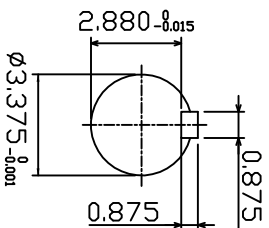


TYPE	OUTPUT		POLE	TIME RATING	VOLTAGE V	Hz	SYN SPEED R.P.M
	HP.	KW.					
AEHH8P	125	93.3	6	CONT.	230/460	60	1200

TOTALLY ENCLOSED FAN-COOLED TYPE, SQUIRREL-CAGE ROTOR



SHAFT END
[ENLARGED VIEW]



- NOTE:
1. DIMENSIONS IN INCHES
 2. FRAME SIZE 445T
 3. F CLASS INSULATION, S.F. 1.15
 4. FOR BELTED APPLICATION
 5. BEARING ND.: DRIVE END: NU318C3
DPP, DRIVE END: 6316C3
 6. ENCLOSURE: IP44
 7. APPRDX. WEIGHT: 1800 LBS

DWN.	SLEE	JAN. 26 '2011
CHKD.	SLEE	JAN. 26 '2011
APPD.	HLIU	JAN. 26 '2011

DATE
FEB. 11, 2011

CATALOG #
NP1256R

OUTLINE DIMENSIONS
3-PHASE INDUCTION MOTOR



DWG ND. 3A049DWB10464-26
REV: 00