

# Product Information Packet

November 9, 2016

Data shown is for the current revision model #. Ensure your nameplate model # matches.

<b>Model Number:</b>	<b>5KS184STE205A</b>
<b>Catalog Number:</b>	<b>M7727</b>
<b>Instruction Manual:</b>	GEI-M1031
<b>Connection Diagram:</b>	GEM2034E-FIG203
<b>Outline Drawing:</b>	358B6270AB

<b>Accessory Connection Diagrams</b>			
<b>Bearing Thermocouple:</b>	None	<b>Heater:</b>	None
<b>RTD:</b>	None	<b>Thermistor:</b>	None
<b>Thermostat:</b>	None	<b>Winding Thermocouple:</b>	None
<b>Bearing RTD:</b>	None		

<b>Table of Contents</b>	
Specification	01
Performance Characteristics	02
Outline Drawing	03
Connection Drawing(s)	04

**Marks:**

<b>MODEL NUMBER:</b>	<b>5KS184STE205A</b>	<b>Estimated Weight:</b>	113 Lbs
<b>Outline Drawing:</b>	358B6270AB	<b>Time Rating:</b>	CONT
<b>Connection Diagram:</b>	GEM2034E-FIG203	<b>Enclosure:</b>	TEFC
<b>Instruction Book:</b>	GEI-M1031	<b>Encl Construction:</b>	SD
<b>Design Code:</b>	18AD1021A	<b>Ambient Max(°C):</b>	40
<b>Type:</b>	KS	<b>Alt Ambient Max(°C):</b>	--
<b>Frame:</b>	184T	<b>Insulation Class:</b>	F
<b>Phases:</b>	3	<b>NEMA Design:</b>	A
<b>Poles:</b>	4	<b>Nominal Efficiency:</b>	89.5 %
<b>Output Power:</b>	5HP 3.7KW	<b>Guaranteed Efficiency:</b>	87.5
<b>RPM:</b>	1750	<b>3/4 Load Efficiency:</b>	91.3
<b>Voltage:</b>	230/460	<b>KVA Code:</b>	K
<b>Hertz:</b>	60	<b>Max KVAR:</b>	1.8
<b>Amps - FL:</b>	12.6/6.3	<b>Power Factor:</b>	83
<b>Service Factor:</b>	1.15	<b>Bearing - DE:</b>	6207ZZC3
<b>Alt Service Factor:</b>	--	<b>Bearing - ODE:</b>	6206ZZC3

**Enclosure is Totally Enclosed Fan-Cooled**

---

**Stamped Nameplate Notes:**

USABLE AT 200V @ 5 HP,14.1 AMPS @ 1.0 SF

LRA: 110.8/55.4

50HZ DATA: 3 HP,200/400V, 10.4/5.2 AMPS @ 1.15 SF

50HZ DATA: 5 HP, 200/400V,14.4/7.2 AMPS @ 1.00 SF

GREASE TYPE: SHELL ALVANIA R3 LITHIUM GREASE

**Additional Information:**

CONDUIT BOX MATERIAL: CAST IRON

SUITABLE FOR USE IN CLASS I DIVISION 2 LOCATIONS

CLASS I DIVISION 2 GROUPS A,B,C,D T3C

CLASS I ZONE 2 IIC T3C



**Performance Characteristics**

1st Winding 1st Connection

**Design: 18AD1021A**

**Marks:**

LOAD %	125.0	115.0	100.0	75.0	50.0	25.0	0.0
% EFF	89.12	89.72	90.68	91.29	91.07	87.44	0.00
% PF	85.04	84.48	83.08	78.45	68.27	46.11	5.6
AMPS	7.72	7.1	6.21	4.9	3.76	2.9	2.5

**TORQ(FL)#FT** 14.98  
**AMPS(LR)** 55.45

**TORQ(LR)%FL** 333.44  
**PF AT START** 0.5

**TORQ(BD)%FL** 385.89

This motor is capable of two cold or one hot start with a maximum connected load inertia of 131 Lb-Ft Sq (5.52 Kg-meter Sq)at 100% voltage, where the load torque varies with the square of the speed. Acceleration time with maximum inertia and the above load type is 17 seconds. Safe stall time at 100% voltage is 40 seconds cold, 27 seconds hot. Rotor inertia is 0.46 Lb-Ft Sq (0.02 Kg-meter Sq).

**Open Circuit A-C:** 0.239

**Short Circuit D-C:** 0.007

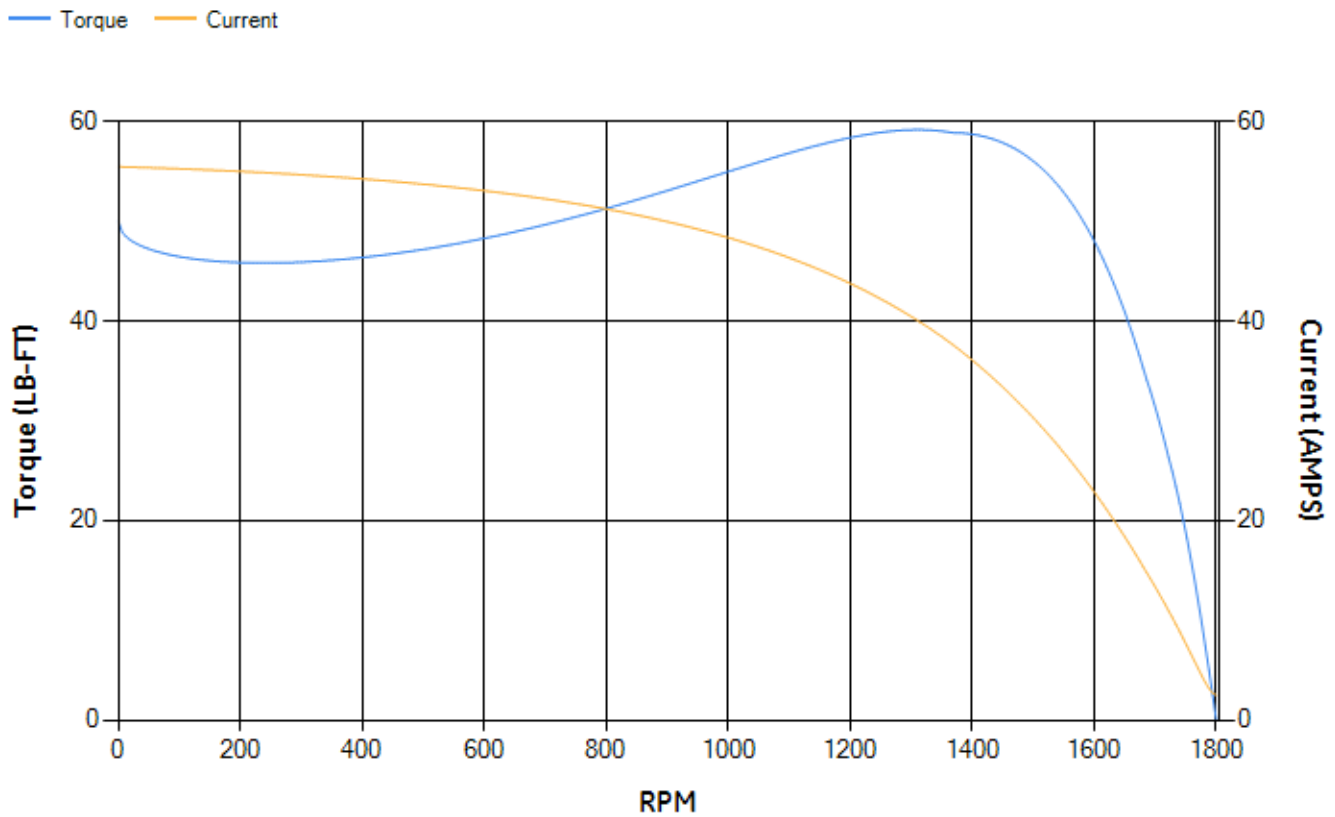
**Short Circuit A-C:** 0.009

**X/R Ratio:** 2.676

**Stator Slots:** 36

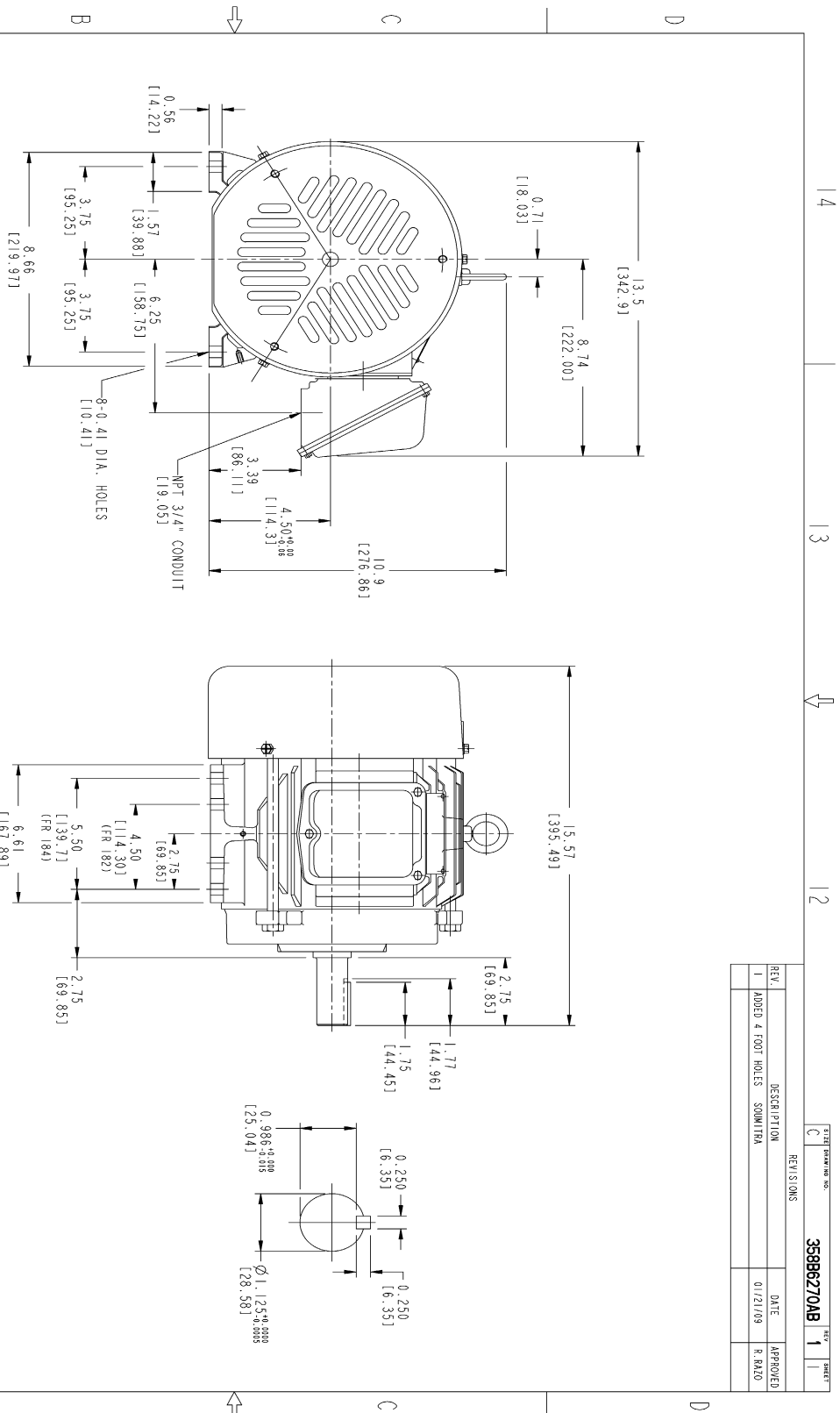
**Rotor Slots:** 28

**Speed Torque Current Curve (First Connection, First Speed)**



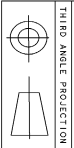
NAME:501452442 OBJECT:358B6270AB DATE:22-Jan-09 11:15:11

Marks:



NOTES :

1. DIMENSIONS ARE IN INCHES.
2. F-1 ASM AS SHOWN.
3. F-2 ASM - HAS CONDUIT BOX ON OPPOSITE SIDE.
4. BRACKETED DIMENSIONS ARE METRIC (MILLIMETERS)
5. ICALL, IP54, IMB34 APPLY



Part must conform to SI 900000 Sect 4, Toxicity Procedure

REV.	DESCRIPTION	DATE	APPROVED
1	ADDED 4 FOOT HOLES	01/21/09	R. PALO

FOR ADDITIONAL INFO REFER TO:	SIGNATURES	DATE
REFLECTED DIMENSIONS SPECIFIED IN INCHES	RETAIL	11/05/07
TOLERANCE ON DIMENSIONS	SANJAY SOMNITRA	11/05/07
2 PL DECIMALS ±	R. KOHNE	11/05/07
3 PL DECIMALS ±	ISSUED	11/05/07
ANGLES ±	SOMNITRA	
FRACTIONS ±		
FINISH		

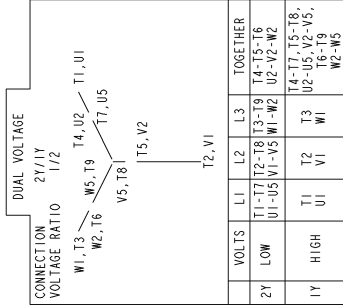
  

GE Consumer & Industrial	GENERAL ELECTRIC COMPANY
FTD - 827/847 TERC CE MARK	
471 CU IN CONDUIT BOX	
358B6270AB	
1	

4 3 12 11

Marks:

**Connection Diagram**  
**GEM2034E-FIG203**



NAME: 500903578 OBJECT: GEM2034E-FIG203 DATE: 03-Nov-06 13:53:10