

# Product Information Packet

November 8, 2016

Data shown is for the current revision model #. Ensure your nameplate model # matches.

<b>Model Number:</b>	<b>5KS326SAA404D5</b>
<b>Catalog Number:</b>	<b>M9762</b>
<b>Instruction Manual:</b>	GEI-56128
<b>Connection Diagram:</b>	GEM2034E-FIG7
<b>Outline Drawing:</b>	239C6000AE

Accessory Connection Diagrams			
<b>Bearing Thermocouple:</b>	None	<b>Heater:</b>	None
<b>RTD:</b>	None	<b>Thermistor:</b>	None
<b>Thermostat:</b>	None	<b>Winding Thermocouple:</b>	None
<b>Bearing RTD:</b>	None		

## Table of Contents

Specification	01
Performance Characteristics	02
Outline Drawing	03
Connection Drawing(s)	04
Spare parts	05



**Marks:**

<b>MODEL NUMBER:</b>	<b>5KS326SAA404D5</b>	<b>Estimated Weight:</b>	670 Lbs
<b>Outline Drawing:</b>	239C6000AE	<b>Time Rating:</b>	CONT
<b>Connection Diagram:</b>	GEM2034E-FIG7	<b>Enclosure:</b>	TEFC
<b>Instruction Book:</b>	GEI-56128	<b>Encl Construction:</b>	X\$D
<b>Design Code:</b>	32BD4038B	<b>Ambient Max(°C):</b>	40
<b>Type:</b>	KS	<b>Alt Ambient Max(°C):</b>	65
<b>Frame:</b>	326T	<b>Insulation Class:</b>	H
<b>Phases:</b>	3	<b>NEMA Design:</b>	B
<b>Poles:</b>	8	<b>Nominal Efficiency:</b>	91.0 %
<b>Output Power:</b>	25HP 18.5KW	<b>Guaranteed Efficiency:</b>	90.2
<b>RPM:</b>	880	<b>3/4 Load Efficiency:</b>	91.5
<b>Voltage:</b>	575	<b>KVA Code:</b>	G
<b>Hertz:</b>	60	<b>Max KVAR:</b>	15.0
<b>Amps - FL:</b>	30.3	<b>Power Factor:</b>	68.0
<b>Service Factor:</b>	1.15	<b>Bearing - DE:</b>	6312ZC3
<b>Alt Service Factor:</b>	1.00	<b>Bearing - ODE:</b>	6312ZC3

**Enclosure is Totally Enclosed Fan-Cooled**

**Stamped Nameplate Notes:**

STAMP NP249A5564P051 AS BELOW:  
 MODEL:5KS326SAA404D5 S/N: XXX  
 CSA CERTIFIED CSA09.2216219 FOR EX NA IIC 200 C GC  
 CL 1 ZONE2 AEX NA IIC 200C;CL 1 DIV2 GRP ABCD 200C  
 IN -40C <= AMB <= 40C, 1.0 SF ON SINE-WAVE PWR  
 SURF TEMP 260C AT 1.15SF ON SINE-WAVE PWR  
 OR 200C VT OR 260C CT OR 200C CHP PWM CONTROL  
 ALTERNATE RATING FOR PWM CONTROL 1.0SF 40C AMB  
 VT 0 - 60 HZ, CT 8.6-60 HZ, CHP 60-90 HZ.

**Additional Information:**

8P - T EXTN  
 346 CU IN - 3.00" NPT  
 OIL RESISTANT SLEEVING ON LEADS  
 F1 MOUNTING

**Performance Characteristics**

1st Winding 1st Connection

**Design: 32BD4038B**

**Marks:**

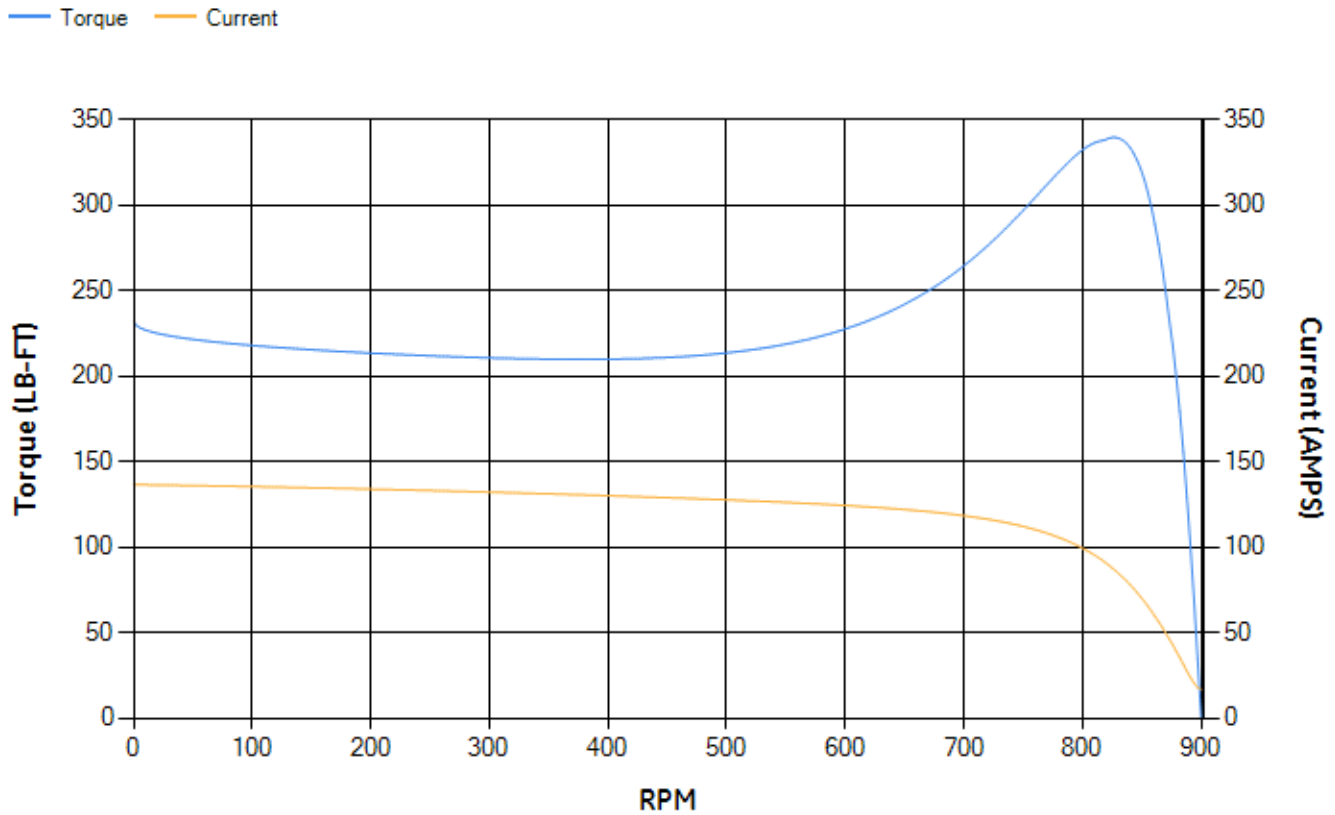
LOAD %	125.0	115.0	100.0	75.0	50.0	25.0	0.0
% EFF	89.86	90.4	91.22	91.51	90.85	86.46	0.00
% PF	71.52	70.53	68.22	61.46	49.42	30.05	3.56
AMPS	36.41	33.76	30.06	24.96	20.84	18.01	16.72

<b>TORQ(FL)#FT</b>	149.19	<b>TORQ(LR)%FL</b>	155.45	<b>TORQ(BD)%FL</b>	225.48
<b>AMPS(LR)</b>	136.41	<b>PF AT START</b>	0.34		

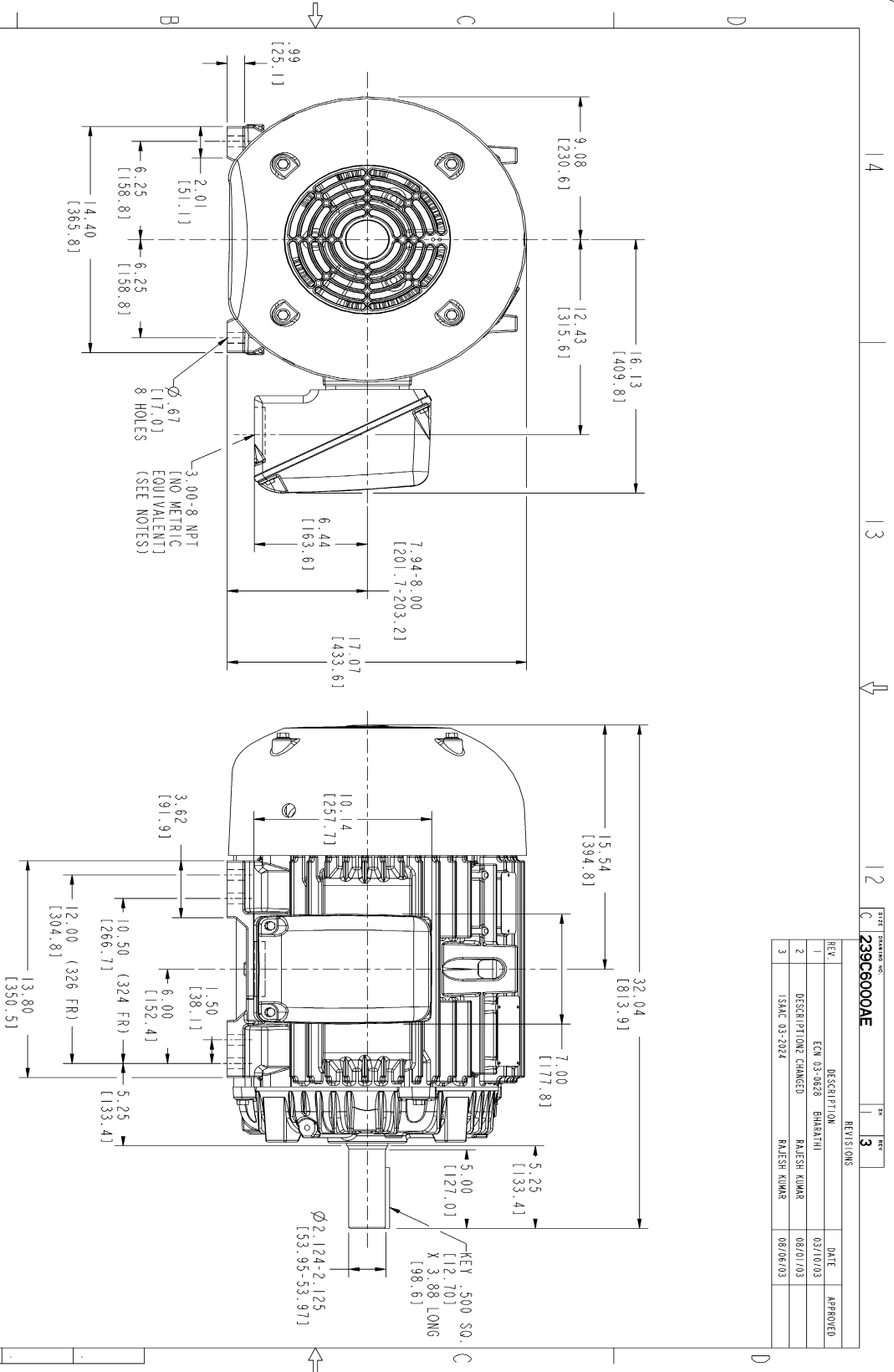
This motor is capable of two cold or one hot start with a maximum connected load inertia of 4004 Lb-Ft Sq (168.57 Kg-meter Sq)at 100% voltage, where the load torque varies with the square of the speed. Acceleration time with maximum inertia and the above load type is 62 seconds. Safe stall time at 100% voltage is 141 seconds cold, 74 seconds hot. Rotor inertia is 9.38 Lb-Ft Sq (0.39 Kg-meter Sq).

<b>Open Circuit A-C:</b>	0.191	<b>Short Circuit D-C:</b>	0.018
<b>Short Circuit A-C:</b>	0.02	<b>X/R Ratio:</b>	6.635
<b>Stator Slots:</b>	54	<b>Rotor Slots:</b>	40

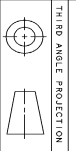
**Speed Torque Current Curve (First Connection, First Speed)**



Marks:



REV.	DESCRIPTION	DATE	APPROVED
1	EQM 03-0628 BHARATHI	03/10/03	
2	DESCRIPTION CHANGED	08/01/03	RAJESH KUMAR
3	ISSAC 03-2024	08/06/03	RAJESH KUMAR



THIRD ANGLE PROJECTION

NOTES :

- CONDUIT BOX MAY BE PLACED WITH THE ENTRANCE DOWN, UP OR ON EITHER SIDE.
- F-1 ASM AS SHOWN.
- F-2 ASM HAS CONDUIT BOX ON OPPOSITE SIDE.
- BRACKETED DIMENSIONS ARE METRIC (MILLIMETERS).

SIGNATURES	DATE	GE Healthcare Systems	GENERAL ELECTRIC COMPANY
DESIGNER: MABRAKI	03/13/02		
DRAWN: MABRAKI	03/13/02		
CHECKED: MANIVANAN	03/13/02		
APPLIED PRACTICES:			
SCALE: 0.250		REF. NO.:	
SHEET DRAWING		SHEET NO. 1	
OUTLINE		346 CU. IN. CONDUIT BOX	
324/326 TERC		239C6000AE	
DISTRIBUTION: MMP		REV: 3	

Marks:

**Connection Diagram**  
**GEM2034E-FIG7**



End shield Assembly		
Part Description	DE Side Part#	ODE Side Part#
End Shield	115E4200AA1	115E4200LA1
Bearing	235A2609AA01	235A2609AA01
Slinger/Inproseal	149C4399G04	149C4399G04

Fan & Fan Cover Assembly	
Part Description	Part#
Fan	159C7000G01
Fan Cover	128D6800AA1

Conduit & Accessories Box Assembly	
Part Description	Part#
Conduit Box	149C4429AA2

Mechanical Accessories	
Part Description	Part#
Brake	
Tachometer	