

Product Information Packet

February 28, 2017

Data shown is for the current revision model #. Ensure your nameplate model # matches.

Model Number:	5KS444XAJ5708A
Catalog Number:	V4811
Instruction Manual:	GEK-95351
Connection Diagram:	GEM2034E-FIG7
Outline Drawing:	148CB44IPHRCCLA0001

Accessory Connection Diagrams			
Bearing Thermocouple:	None	Heater:	None
RTD:	None	Thermistor:	None
Thermostat:	None	Winding Thermocouple:	None
Bearing RTD:	None		

Table of Contents

Specification	01
Performance Characteristics	02
Outline Drawing	03
Connection Drawing(s)	04
Spare parts	05



Marks:

MODEL NUMBER:	5KS444XAJ5708A	Estimated Weight:	2115 Lbs
Outline Drawing:	148CB44IPHRCCLA0001	Time Rating:	CONT
Connection Diagram:	GEM2034E-FIG7	Enclosure:	TEFC
Instruction Book:	GEK-95351	Encl Construction:	841
Design Code:	44BD0130AB	Ambient Max(°C):	40
Type:	KS	Alt Ambient Max(°C):	--
Frame:	L444LP16	Insulation Class:	H
Phases:	3	NEMA Design:	B
Poles:	2	Nominal Efficiency:	95.0 %
Output Power:	125HP 92.5KW	Guaranteed Efficiency:	94.1
RPM:	3580	3/4 Load Efficiency:	92.8
Voltage:	460	KVA Code:	G
Hertz:	60	Max KVAR:	29.4
Amps - FL:	141.0	Power Factor:	88.5
Service Factor:	1.15	Bearing - DE:	NU217
Alt Service Factor:	--	Bearing - ODE:	235A2523AD01

Enclosure is Totally Enclosed Fan-Cooled

Stamped Nameplate Notes:

EXCEPTIONS TO IEEE-STD-841-2009:
 ALUMINIUM FAN BACK PLATE
 VERTICAL 841
 DE BRG 85RU02M00, ODE BRG 100BT02MD00
 INVERTER DUTY PER NEMA MG1 PART 31
 ALTERNATE RATING FOR PWM CONTROL:1.0SF 40C AMBIENT
 VAR TORQUE RANGE 0-60 HZ
 GE SELF DECLARED CLASS I DIV 2 MOTOR
 MAX EXPOSED INTERNAL AND EXTERNAL SURFACE
 TEMPERATURES UNDER USUAL SERVICE CONDITIONS
 AT 1.00 S.F. DO NOT EXCEED 200 DEG C
 API 610 12TH EDITION SHAFT DIMENSIONS
 INLINE MOTOR

Additional Information:

2 POLE,VERT SOLID SHAFT INLINE (1U1D)
 PAINTED FRAME ID & SHAFT,
 FAN COVER INSIDE & ODE E/S OUTSIDE
 700 CU IN - 3.00" NPT
 BEARING LIFE 8760 HRS AT 4024 LB THRUST
 BEARING LIFE 26280 HRS AT 2530 LB THRUST
 INPRO SEAL LOWER END
 OIL RESISTANT SLEEVING ON LEADS
 ROUTINE TEST REPORT AND 5 POINT VIBRATION TEST
 REPORT INCLUDED IN C/B
 COPPER WASHER UNDER HEADS OF BEARING CAP BOLTS,
 APPLY TITE-SEAL (A50CD427A) ON BEARING CAP SCREWS,

RABBETS AND PLUG THREADS.
STAINLESS STEEL T-DRAINS
FRAME GROUND PAD
ACTUAL EFFICIENCY = 93.6%
RCF: XXXX CPM AT C/BOX SIDE, XXXX CPM AT
90 DEG FROM C/ BOX SIDE
CG: XX.XX IN FROM P-BASE FACE

Performance Characteristics

1st Winding 1st Connection

Design: 44BD0130AB

Marks:

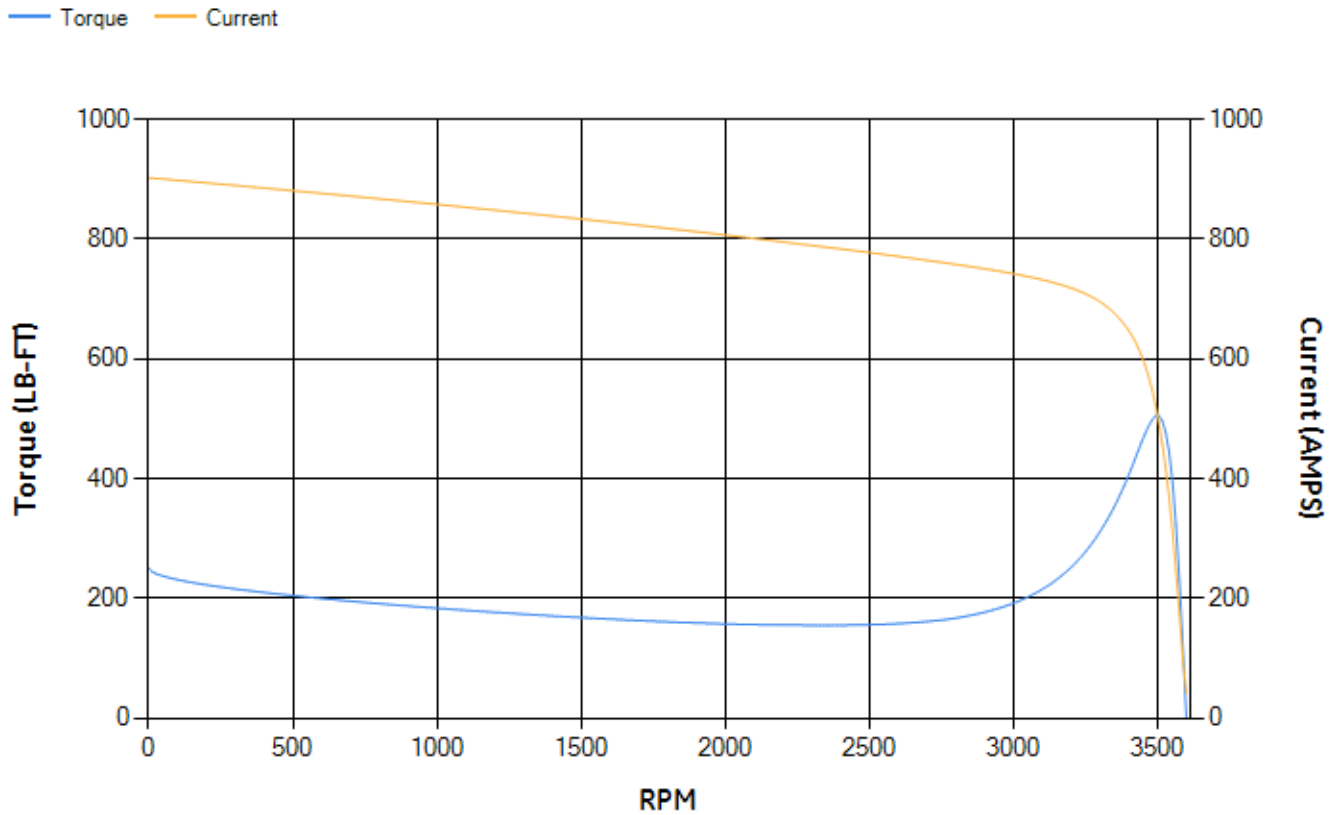
LOAD %	125.0	115.0	100.0	75.0	50.0	25.0	0.0
% EFF	93.51	93.53	93.64	92.83	91.04	85.1	0.00
% PF	89.28	89.18	88.71	86.48	80.32	62.29	11.68
AMPS	175.17	161.29	140.85	109.3	80	55.18	41.06

TORQ(FL)#FT	183.36	TORQ(LR)%FL	136.68	TORQ(BD)%FL	275.65
AMPS(LR)	902.41	PF AT START	0.2		

This motor is capable of two cold or one hot start with a maximum connected load inertia of 408 Lb-Ft Sq (17.18 Kg-meter Sq) at 100% voltage, where the load torque varies with the square of the speed. Acceleration time with maximum inertia and the above load type is 36 seconds. Safe stall time at 100% voltage is 79 seconds cold, 43 seconds hot. Rotor inertia is 22.71 Lb-Ft Sq (0.96 Kg-meter Sq).

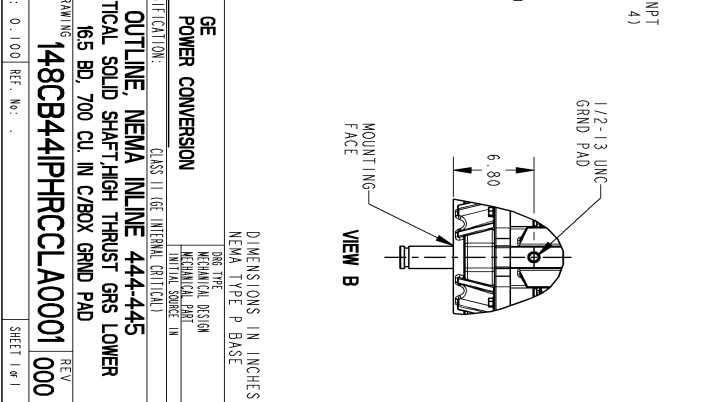
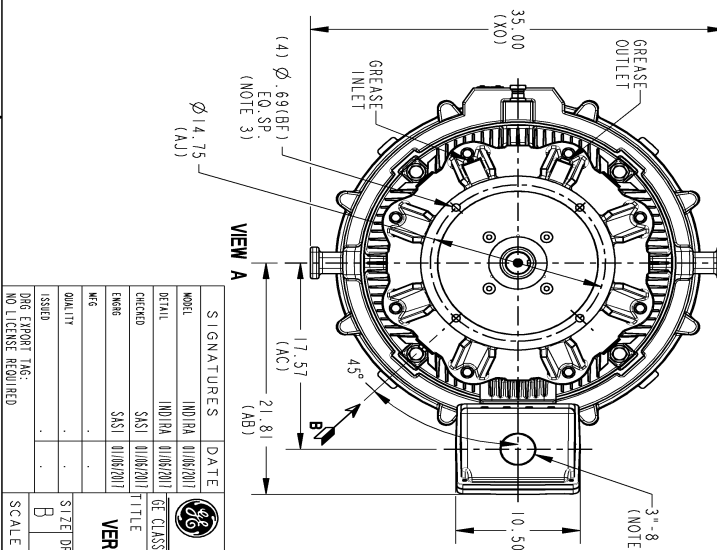
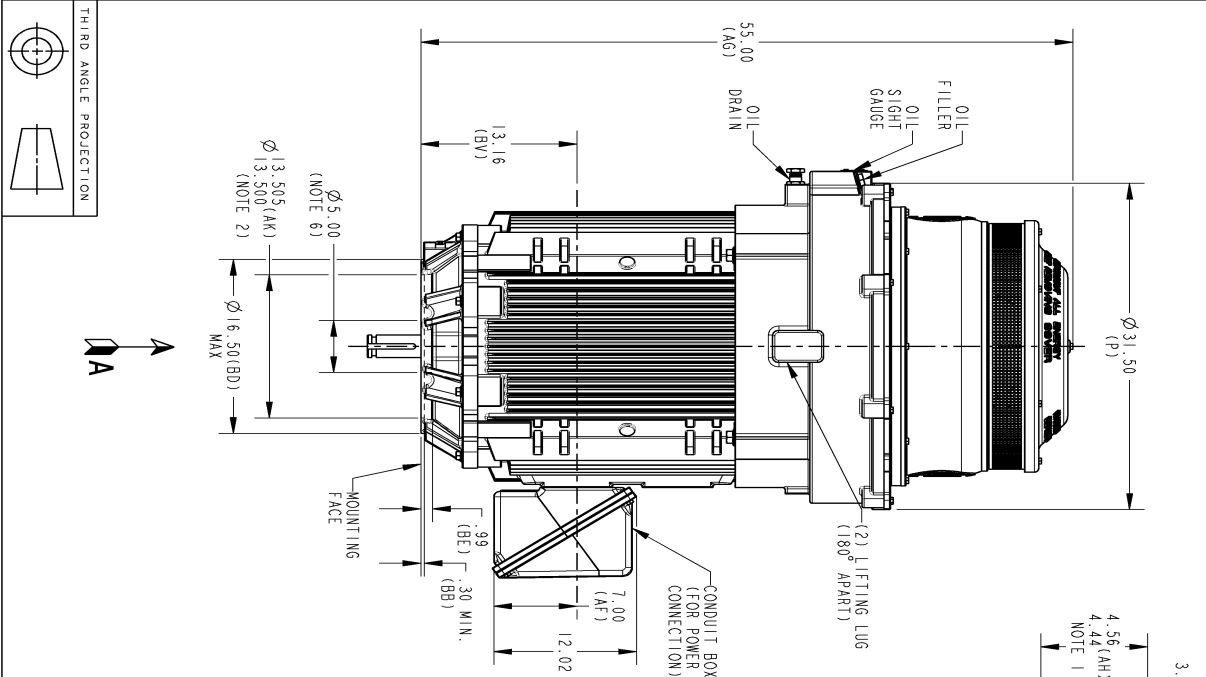
Open Circuit A-C:	1.548	Short Circuit D-C:	0.036
Short Circuit A-C:	0.074	X/R Ratio:	13.677
Stator Slots:	48	Rotor Slots:	38

Speed Torque Current Curve (First Connection, First Speed)



Marks:

SOLID MODEL: 148CB441PHRCCLA0001



REV.	DESCRIPTION	DATE	APPROVED

NOTES:

- "AH" DIMENSION IS MEASURED WITH MOTOR IN VERTICAL POSITION SHAFT DOWN.
- MEETS API 610 12TH EDITION SHAFT DIMENSIONS.
- CENTER OF MOUNTING BOLTS HOLES WITHIN .025 OF ANGULAR & DIAMETRICAL LOCATION WITHIN REFERENCE TO THE CENTERLINE OF MOUNTING RABBIT.
- PROVIDED MOUNTING CONDITIONS PERMIT, CONDUIT BOX MAY BE TURNED SO THAT ENTRANCE CAN BE MADE UPWARD, DOWNWARD OR FROM EITHER SIDE.
- FOR ESTIMATING ONLY UNLESS ENDORSED FOR CONSTRUCTION.
- MAINTAIN MINIMUM CLEARANCE FOR SHAFT SLINGER.

REVISIONS

REV. | DESCRIPTION | DATE | APPROVED

GE POWER CONVERSION

CLASS II, GE INTERNAL CATALOG

OUTLINE, NEMA INLINE 444-445

VERTICAL SOLID SHAFT-HIGH THRUST GRS LOWER

165 BD, 700 CU IN C/BOX GRND PAD

148CB441PHRCCLA0001

SCALE: 0.100 REF. No.

SIGNATURES

SIGNATURES	DATE

DIMENSIONS IN INCHES

NEMA TYPE P BASE

SIZE DRAWING NO. 148CB441PHRCCLA0001 000

REV. SHEET

THIRD ANGLE PROJECTION

SIZE DRAWING NO. 148CB441PHRCCLA0001 000

REV. SHEET

THIRD ANGLE PROJECTION

Marks:

Connection Diagram
GEM2034E-FIG7



End shield Assembly		
Part Description	DE Side Part#	ODE Side Part#
End Shield	115E8660AA1	115E8671LA1
Bearing	235A2522AH01	235A2523AD01
Slinger/Inproseal	235A4575GS4	

Fan & Fan Cover Assembly	
Part Description	Part#
Fan	153B1886G01
Fan Cover	128D6847AA1

Conduit & Accessories Box Assembly	
Part Description	Part#
Conduit Box	118D4408AD2

Mechanical Accessories	
Part Description	Part#
Brake	
Tachometer	