

Product Information Packet

November 7, 2016

Data shown is for the current revision model #. Ensure your nameplate model # matches.

Model Number:	5CD194NA067A051
Catalog Number:	D462
Instruction Manual:	GEH-3967N
Connection Diagram:	36A167900CB501
Outline Drawing:	36A167946AA001

Accessory Connection Diagrams			
Bearing Thermocouple:	None	Heater:	None
RTD:	None	Thermistor:	None
Thermostat:	None	Winding Thermocouple:	None
Bearing RTD:	None		

Table of Contents	
Specification	01
Outline Drawing	02
Connection Drawing(s)	03

Marks:

MODEL NUMBER:	5CD194NA067A051	Enclosure Mtg Assem:	36A167775AA001
Outline Drawing:	36A167946AA001	Instruction Book:	GEH-3967N
Connection Diagram:	36A167900CB501	RPM:	1150/2000
Horsepower:	60	Armature Amps:	98
Armature Volts:	500	Type:	CD368AT
Wound:	SHUNT	Power Supply Code:	C
Enclosure:	DPFG	Insulation Class:	F
Duty:	CONT	Ambient Max (°C):	40 C
Rating Code:	194N1150-02	Field Volts:	300/150
K(V):	3.86 Cemf volts/Radian/Sec	WK2:	22.20Lb Ft2
K(T):	2.80 Ft/Amp	Year of Manufacture:	2016
Minimum Ambient:	0 C	Max Altitude:	3300 Ft

Resistances at 25 Degrees C :

Shunt Field:	87 OHMS
Armature:	.1922 OHMS
Commutator Field:	.0638 OHMS

Inductances:

Armature Circuit Total:	6.410 mH Saturated
Shunt Field:	48.0 Henries Unsaturated

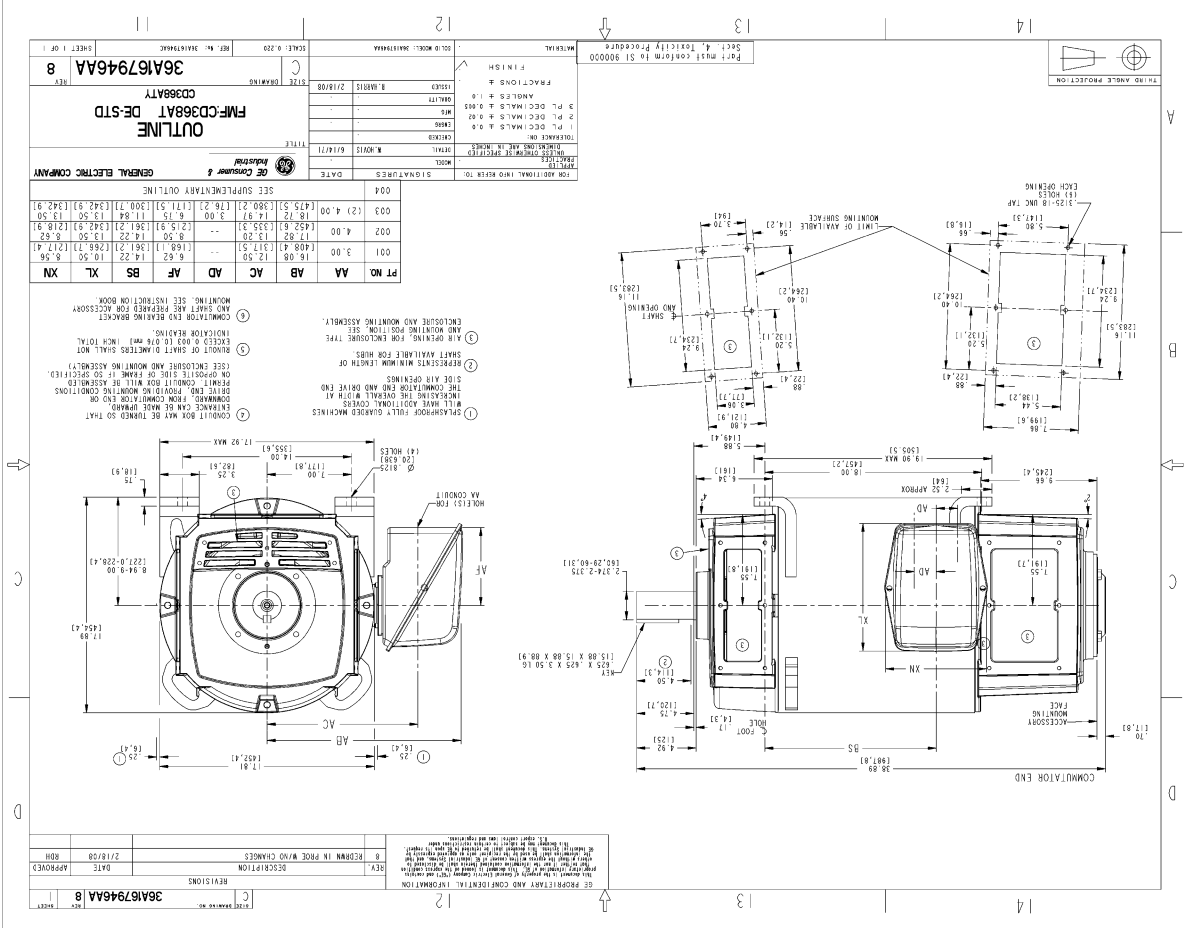
Shunt Field Data:

Shunt Field Current(1): 2.5 AMPS at Rated Load and 1150 RPM
 Shunt Field Current(2): 1.91 AMPS at Rated Load and 1433 RPM
 Shunt Field Current(3): 1.3 AMPS at Rated Load and 2000 RPM

Additional Machine Notes:

DRIPPROOF FULLY GUARDED - BALL BEARINGS
 CONDUIT BOX ON RIGHT HAND SIDE FACING COMMUTATOR END
 STANDARD SHAFT DRIVE END ONLY - WITH FEET
 WITH:
 CSA STAMP
 THERMOSTAT- NORMALLY CLOSED, AC RATING- 600V MAX-
 .5A, 250V-1.5A, OR 125V-3A- DC RATING- 30V MAX-
 1.5A. MAXIMUM CURRENT BASED ON INDUCTIVE LOADS UP
 TO AND INCLUDING NEMA NO. 5 CONTACTOR.

Marks:



NAME: 20800954 OBJ: 36A167946AA DATE: 2/19/08 16:11:00

Marks:

NO S.O.	GENERAL ELECTRIC	36A167900CB501 CONT ON SHEET SN NO.						
36A167900CB501 CONT ON SHEET SN NO.	CONNECTION DIAGRAM							
FIRST MADE FOR 4 POLE - 360AT (WP)								
DIRECT CURRENT MOTOR AND GENERATOR - SHUNT WOUND 1 OR 2 CIRCUIT SHUNT FIELD - 2 CIRCUIT COMMUTATING FIELD								
VIEWS FACING COMMUTATOR END - LEADS OUT RIGHT SIDE -								
VIEWS FACING COMMUTATOR END - LEADS OUT LEFT SIDE -								
<p>ALL EXTERNAL LEADS ARE MARKED. ALL CONNECTIONS AND TERMINATIONS EXTERNAL TO MAGNET FRAME MUST BE INSULATED PER NATIONAL ELECTRICAL CODE AND SOUND LOCAL PRACTICES.</p> <p>SPACE HEATERS, WHEN SPECIFIED, WILL HAVE LEADS WITH TERMINAL MARKINGS H1 AND H2.</p> <p>THERMOSTAT, WHEN SPECIFIED, WILL HAVE LEADS WITH TERMINAL MARKINGS P1 AND P2.</p> <p>ENCIRCLED NUMBERS MAY BE USED FOR PART IDENTIFICATION.</p>								
<p>FOR HIGH NAMEPLATE EXCITATION VOLTAGE CONNECT SHUNT FIELD LEADS AS INDICATED</p>								
<p>MOTOR CONNECTIONS: FOR CCW ROTATION FACING COMMUTATOR END, MAKE LEADS F1 AND A1 THE SAME POLARITY. FOR CW ROTATION FACING COMMUTATOR END, MAKE LEADS F1 AND A2 THE SAME POLARITY.</p>	<p>GENERATOR CONNECTIONS: FOR CW ROTATION FACING COMMUTATOR END, F1 POSITIVE WILL MAKE A2 POSITIVE. FOR CCW ROTATION FACING COMMUTATOR END, F1 POSITIVE WILL MAKE A1 POSITIVE.</p>							
<p>FOR LOW NAMEPLATE EXCITATION VOLTAGE CONNECT SHUNT FIELD LEADS AS INDICATED</p>								
<p>MOTOR CONNECTIONS: FOR CCW ROTATION FACING COMMUTATOR END, MAKE LEADS (F1,F3) & A1 THE SAME POLARITY. FOR CW ROTATION FACING COMMUTATOR END, MAKE LEADS (F1,F3) & A2 THE SAME POLARITY.</p>	<p>GENERATOR CONNECTIONS: FOR CW ROTATION FACING COMMUTATOR END, (F1,F3) POSITIVE WILL MAKE A2 POSITIVE. FOR CCW ROTATION FACING COMMUTATOR END, (F1,F3) POSITIVE WILL MAKE A1 POSITIVE.</p>							
<table border="1" style="width:100%; border-collapse: collapse;"> <tr> <td style="width:50%;">I 10-7-94 R.D.BOLLA</td> <td style="width:50%;">NO S.O. RETR</td> </tr> </table>	I 10-7-94 R.D.BOLLA	NO S.O. RETR	QC (1) CAD					
I 10-7-94 R.D.BOLLA	NO S.O. RETR							
<table border="1" style="width:100%; border-collapse: collapse;"> <tr> <td style="width:33%;">MADE BY W.C.HOVIS FEB.15.1972</td> <td style="width:33%;">FILE KC13-1</td> <td style="width:33%;">GE MOTORS DIV OR DEPT ERIE LOCATION</td> </tr> <tr> <td>RE-ISSUED CAD/ R.D.BOLLA 10-7-94</td> <td></td> <td>36A167900CB501 CONT ON SHEET SN NO.</td> </tr> </table>	MADE BY W.C.HOVIS FEB.15.1972	FILE KC13-1	GE MOTORS DIV OR DEPT ERIE LOCATION	RE-ISSUED CAD/ R.D.BOLLA 10-7-94		36A167900CB501 CONT ON SHEET SN NO.		
MADE BY W.C.HOVIS FEB.15.1972	FILE KC13-1	GE MOTORS DIV OR DEPT ERIE LOCATION						
RE-ISSUED CAD/ R.D.BOLLA 10-7-94		36A167900CB501 CONT ON SHEET SN NO.						

DC-28112-15-671