

# Product Information Packet

January 12, 2017

Data shown is for the current revision model #. Ensure your nameplate model # matches.

<b>Model Number:</b>	<b>5KS511SAA143B</b>
<b>Catalog Number:</b>	<b>Q527</b>
<b>Instruction Manual:</b>	GEI-56128
<b>Connection Diagram:</b>	GEM2034E-FIG20
<b>Outline Drawing:</b>	239C6B00MP

Accessory Connection Diagrams			
<b>Bearing Thermocouple:</b>	None	<b>Heater:</b>	3027JE-1C
<b>RTD:</b>	None	<b>Thermistor:</b>	None
<b>Thermostat:</b>	None	<b>Winding Thermocouple:</b>	None
<b>Bearing RTD:</b>	None		

Table of Contents	
Specification	01
Performance Characteristics	02
Outline Drawing	03
Connection Drawing(s)	04



**Marks:**

<b>MODEL NUMBER:</b>	<b>5KS511SAA143B</b>	<b>Estimated Weight:</b>	5335 Lbs
<b>Outline Drawing:</b>	239C6B00MP	<b>Time Rating:</b>	CONT
<b>Connection Diagram:</b>	GEM2034E-FIG20	<b>Enclosure:</b>	TEFC
<b>Instruction Book:</b>	GEI-56128	<b>Encl Construction:</b>	SD
<b>Design Code:</b>	50BD0173A	<b>Ambient Max(°C):</b>	40
<b>Type:</b>	KS	<b>Alt Ambient Max(°C):</b>	--
<b>Frame:</b>	5011LS	<b>Insulation Class:</b>	F
<b>Phases:</b>	3	<b>NEMA Design:</b>	B
<b>Poles:</b>	2	<b>Nominal Efficiency:</b>	95.8 %
<b>Output Power:</b>	350HP 259KW	<b>Guaranteed Efficiency:</b>	95.0
<b>RPM:</b>	3570	<b>3/4 Load Efficiency:</b>	95.8
<b>Voltage:</b>	460	<b>KVA Code:</b>	G
<b>Hertz:</b>	60	<b>Max KVAR:</b>	39.0
<b>Amps - FL:</b>	364.0	<b>Power Factor:</b>	94.0
<b>Service Factor:</b>	1.15	<b>Bearing - DE:</b>	6315ZC3
<b>Alt Service Factor:</b>	--	<b>Bearing - ODE:</b>	6315ZC3

**Enclosure is Totally Enclosed Fan-Cooled**

---

**Stamped Nameplate Notes:**

HTR LDS HE1-HE2 115V 350W  
 ROT CCW FACING ODE LEAD/PH SEQUENCE 3-2-1/1-2-3  
 INVERTER DUTY PER NEMA MG1 PART 31  
 ALTERNATE RATING FOR PWM CONTROL:1.0SF 40C AMBIENT  
 VAR TORQUE RANGE 0-60 HZ  
 FOR DIRECT COUPLED LOAD ONLY

**Additional Information:**

2P - LS EXTN - SPLIT LEAD  
 1260 CU IN - 2(4.00" NPT)  
 C/B GRD PLATE  
 115V HTR LDS TO AUX BOX OPP MAIN CONDUIT BOX  
 SPACE HEATER CAUTION NAMEPLATE  
 NEMA TYPE GRD PAD  
 F1 MOUNTING  
 PROVISION FOR BTD ON BOTH ENDS PLUGGED

**Performance Characteristics**

1st Winding 1st Connection

**Design: 50BD0173A**

**Marks:**

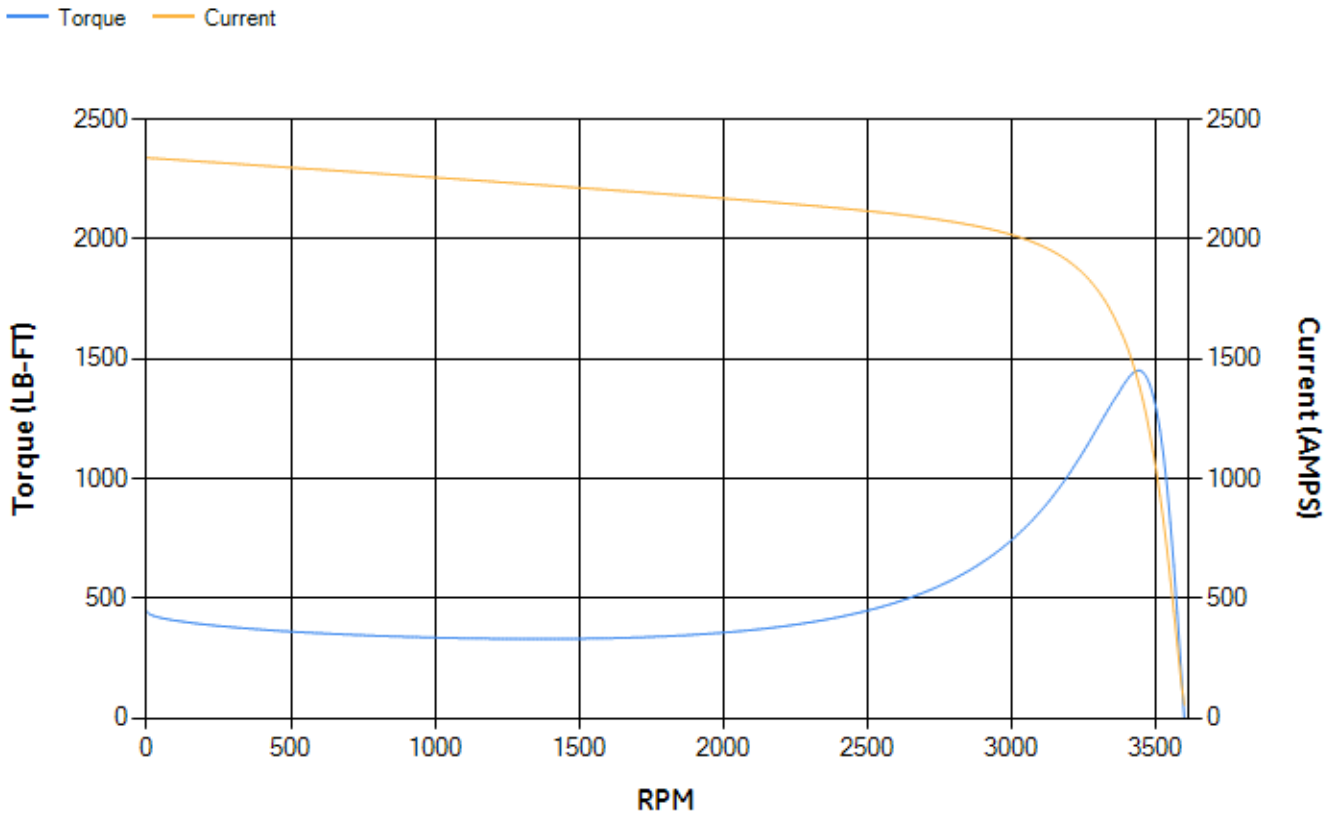
LOAD %	125.0	115.0	100.0	75.0	50.0	25.0	0.0
% EFF	95.33	95.5	95.89	95.79	95.33	92.83	0.00
% PF	93.73	93.99	94.22	93.99	92.03	82.49	9.86
AMPS	458.26	419.68	361.99	272.88	186.69	106.94	54.44

<b>TORQ(FL)#FT</b>	514.47	<b>TORQ(LR)%FL</b>	86.46	<b>TORQ(BD)%FL</b>	281.87
<b>AMPS(LR)</b>	2339.34	<b>PF AT START</b>	0.15		

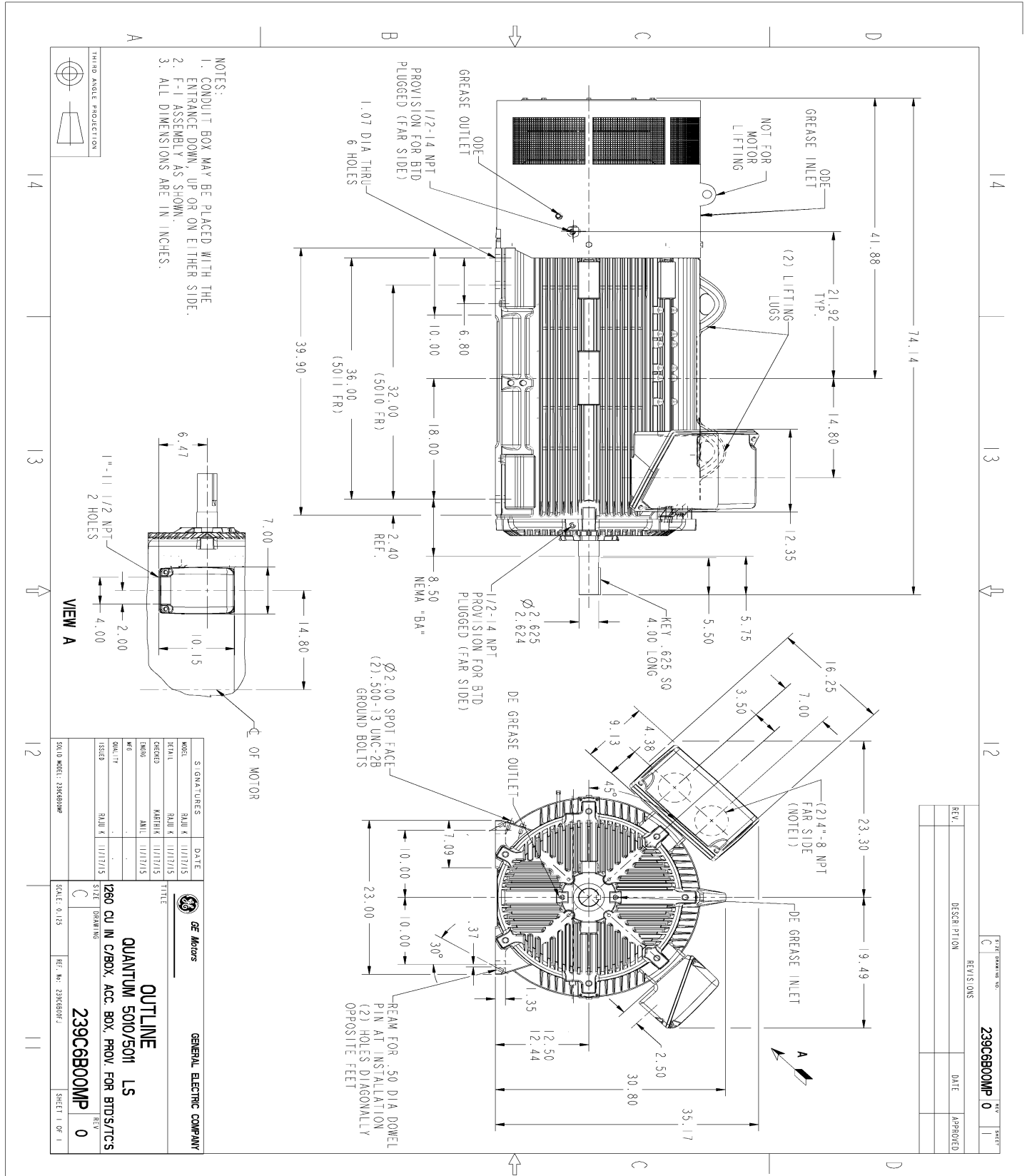
This motor is capable of two cold or one hot start with a maximum connected load inertia of 1223 Lb-Ft Sq (51.49 Kg-meter Sq)at 100% voltage, where the load torque varies with the square of the speed. Acceleration time with maximum inertia and the above load type is 47 seconds. Safe stall time at 100% voltage is 79 seconds cold, 57 seconds hot. Rotor inertia is 105.51 Lb-Ft Sq (4.44 Kg-meter Sq).

<b>Open Circuit A-C:</b>	2.285	<b>Short Circuit D-C:</b>	0.045
<b>Short Circuit A-C:</b>	0.057	<b>X/R Ratio:</b>	17.004
<b>Stator Slots:</b>	48	<b>Rotor Slots:</b>	40

**Speed Torque Current Curve (First Connection, First Speed)**

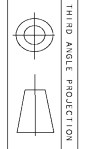


Marks:



REV.	DESCRIPTION	DATE	APPROVED

- NOTES:
1. CONDUIT BOX MAY BE PLACED WITH THE ENTRANCE DOWN, UP OR ON EITHER SIDE.
  2. F-1 ASSEMBLY AS SHOWN.
  3. ALL DIMENSIONS ARE IN INCHES.



SIGNATURES	DATE
DESIGNER: RAJIV K. [Signature]	11/17/15
CHECKED: MANJIB K. [Signature]	11/17/15
DATE	11/17/15
REV	
ISSUED	
QUANTITY	

**GENERAL ELECTRIC COMPANY**

**OUTLINE**

**QUANTUM 5010/5011 LS**

**1260 CU IN C/BOX, ACC. BOX, PROV. FOR BTDS/S/TS**

**239C6B00MP**

SCALE: 0.125      REF. NO. 2396509J2

REV 0      SHEET 1 OF 1

SIZE: DRAWING NO. C	REV: 0	SHEET: 1
239C6B00MP		

Marks:

**Connection Diagram**  
GEM2034E-FIG20



**Heater Connection**  
3027JE-1C

