

# Product Information Packet

November 9, 2016

Data shown is for the current revision model #. Ensure your nameplate model # matches.

<b>Model Number:</b>	<b>5KS449XAA404D</b>
<b>Catalog Number:</b>	<b>M8938</b>
<b>Instruction Manual:</b>	GEI-56128
<b>Connection Diagram:</b>	GEM2034E-FIG1
<b>Outline Drawing:</b>	239C6800VW

<b>Accessory Connection Diagrams</b>			
<b>Bearing Thermocouple:</b>	None	<b>Heater:</b>	None
<b>RTD:</b>	None	<b>Thermistor:</b>	None
<b>Thermostat:</b>	None	<b>Winding Thermocouple:</b>	None
<b>Bearing RTD:</b>	None		

## Table of Contents

Specification	01
Performance Characteristics	02
Outline Drawing	03
Connection Drawing(s)	04
Spare parts	05



**Marks:**

<b>MODEL NUMBER:</b>	<b>5KS449XAA404D</b>	<b>Estimated Weight:</b>	2660 Lbs
<b>Outline Drawing:</b>	239C6800VW	<b>Time Rating:</b>	CONT
<b>Connection Diagram:</b>	GEM2034E-FIG1	<b>Enclosure:</b>	TEFC
<b>Instruction Book:</b>	GEI-56128	<b>Encl Construction:</b>	841
<b>Design Code:</b>	49BD4025B	<b>Ambient Max(°C):</b>	40
<b>Type:</b>	KS	<b>Alt Ambient Max(°C):</b>	--
<b>Frame:</b>	449T	<b>Insulation Class:</b>	H
<b>Phases:</b>	3	<b>NEMA Design:</b>	B
<b>Poles:</b>	8	<b>Nominal Efficiency:</b>	94.5 %
<b>Output Power:</b>	150HP 111KW	<b>Guaranteed Efficiency:</b>	94.1
<b>RPM:</b>	885	<b>3/4 Load Efficiency:</b>	95.3
<b>Voltage:</b>	575	<b>KVA Code:</b>	G
<b>Hertz:</b>	60	<b>Max KVAR:</b>	52.1
<b>Amps - FL:</b>	149.0	<b>Power Factor:</b>	80.0
<b>Service Factor:</b>	1.15	<b>Bearing - DE:</b>	6318ZC3
<b>Alt Service Factor:</b>	--	<b>Bearing - ODE:</b>	6318ZC3

**Enclosure is Totally Enclosed Fan-Cooled**

**Stamped Nameplate Notes:**

IEEE-STD-841-2009  
 DE BRG 90BC03JP3, ODE BRG 90BC03JP3  
 STAMP NP249A5564P051 AS BELOW:  
 MODEL:5KS449XAA404D S/N: XXX  
 CSA CERTIFIED CSA09.2216219 FOR EX NA IIC 200 C GC  
 CL 1 ZONE2 AEX NA IIC 200C;CL 1 DIV2 GRP ABCD 200C  
 IN -25C <= AMB <= 40C, 1.0 SF ON SINE-WAVE PWR  
 SURF TEMP 280C AT 1.15SF ON SINE-WAVE PWR  
 OR 215C VT OR 215C CT OR 215C CHP PWM CONTROL  
 ALTERNATE RATING FOR PWM CONTROL 1.0SF 40C AMB  
 VT 0 - 60 HZ, CT 45-60 HZ, CHP 60-90 HZ.

**Additional Information:**

8P - T EXTN  
 PAINTED FRAME ID & SHAFT,  
 FAN COVER INSIDE & ODE E/S OUTSIDE  
 700 CU IN - 3.00" NPT WITH DRAIN HOLES  
 INPRO SEAL BOTH ENDS  
 OIL RESISTANT SLEEVING ON LEADS  
 .0015" TIR SHAFT RUNOUT  
 ROUTINE TEST REPORT AND 5 POINT VIBRATION TEST  
 REPORT INCLUDED IN C/B  
 COPPER WASHER UNDER HEADS OF BEARING CAP BOLTS,  
 APPLY TITE-SEAL (A50CD427A) ON BEARING CAP SCREWS,  
 RABBETS AND PLUG THREADS.  
 GROUND PAD  
 F1 MOUNTING



**Performance Characteristics**

1st Winding 1st Connection

**Design: 49BD4025B**

**Marks:**

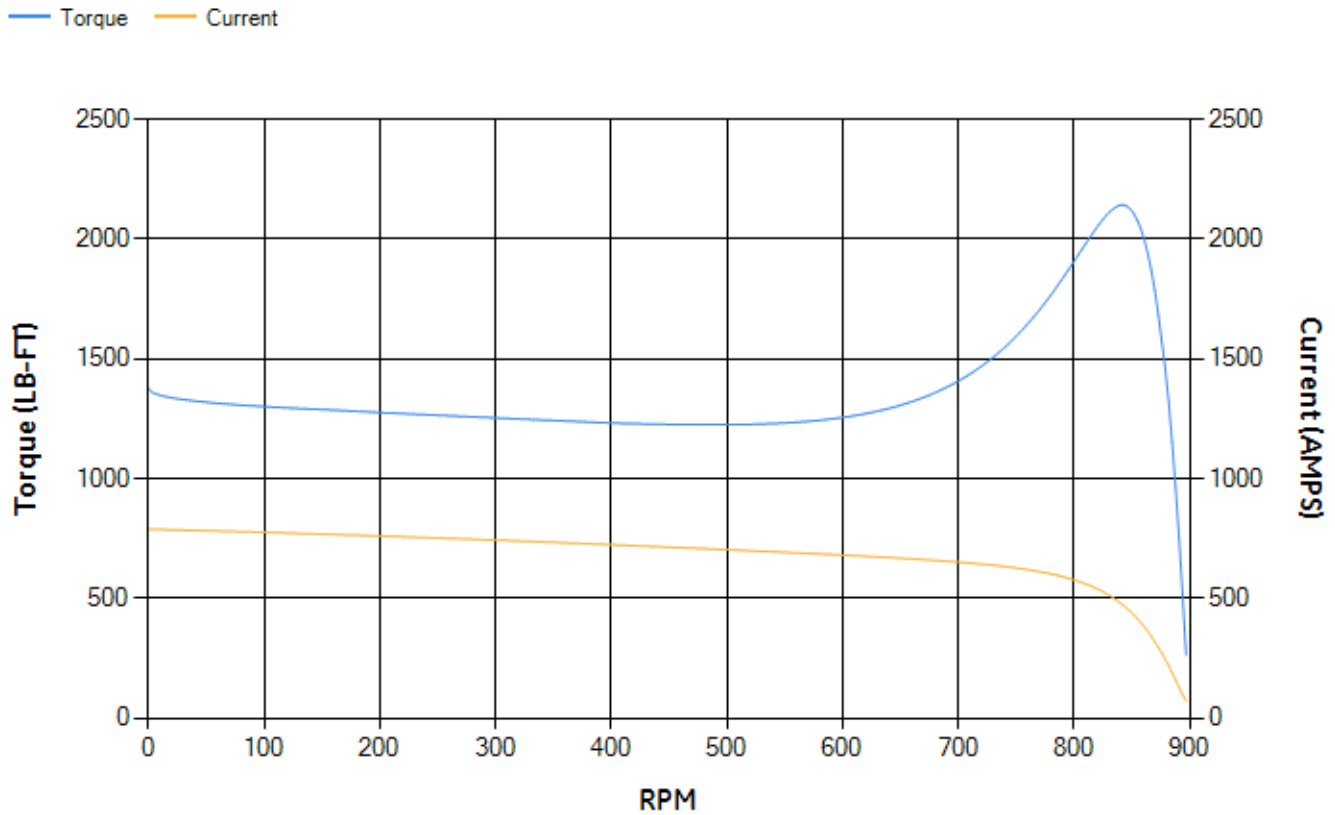
LOAD %	125.0	115.0	100.0	75.0	50.0	25.0	0.0
% EFF	94.03	94.38	95.03	95.31	95.23	93.28	0.00
% PF	81.02	80.82	79.9	75.97	66.4	44.42	2.84
AMPS	184.3	169.33	147.92	116.34	88.81	67.77	58.08

<b>TORQ(FL)#FT</b>	887.47	<b>TORQ(LR)%FL</b>	154.98	<b>TORQ(BD)%FL</b>	241.04
<b>AMPS(LR)</b>	789.05	<b>PF AT START</b>	0.33		

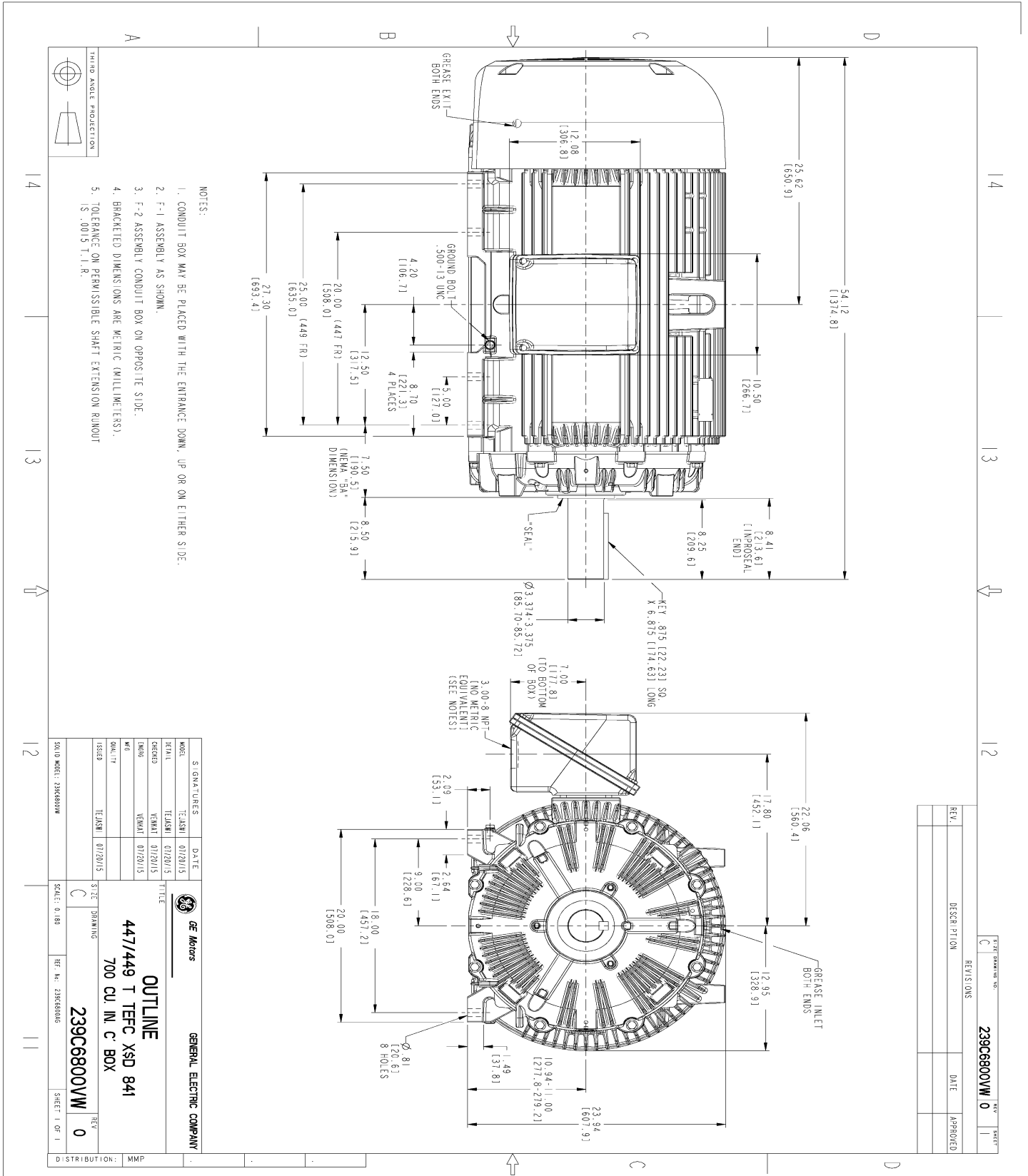
This motor is capable of two cold or one hot start with a maximum connected load inertia of 17185 Lb-Ft Sq (723.49 Kg-meter Sq)at 100% voltage, where the load torque varies with the square of the speed. Acceleration time with maximum inertia and the above load type is 47 seconds. Safe stall time at 100% voltage is 115 seconds cold, 56 seconds hot. Rotor inertia is 138.53 Lb-Ft Sq (5.83 Kg-meter Sq).

<b>Open Circuit A-C:</b>	0.468	<b>Short Circuit D-C:</b>	0.031
<b>Short Circuit A-C:</b>	0.031	<b>X/R Ratio:</b>	11.764
<b>Stator Slots:</b>	72	<b>Rotor Slots:</b>	58

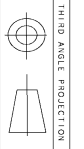
**Speed Torque Current Curve (First Connection, First Speed)**



Marks:



- NOTES:
1. CONDUIT BOX MAY BE PLACED WITH THE ENTRANCE DOWN, UP OR ON EITHER SIDE.
  2. F-1 ASSEMBLY AS SHOWN.
  3. F-2 ASSEMBLY CONDUIT BOX ON OPPOSITE SIDE.
  4. BRACKETED DIMENSIONS ARE METRIC (MILLIMETERS).
  5. TOLERANCE ON PERMISSIBLE SHAFT EXTENSION RANOUT IS .0015 T.I.R.



REV.	DESCRIPTION	DATE	APPROVED

SIGNATURES	DATE	<p><b>GENERAL ELECTRIC COMPANY</b></p> <p><b>OUTLINE</b></p> <p><b>447/449 T TFC XSD 841</b></p> <p><b>700 CU. IN. C. BOX</b></p> <p><b>239C6800VW</b></p>
MODEL: TEASMI	01/20/15	
DRAWN: TEASMI	01/20/15	
CHECKED: VENKAT	01/20/15	
DATE: VENKAT	01/20/15	
ISSUED: TEASMI	01/20/15	SCALE: 0.180
SOLID MODEL: 239C6800VW	SCALE: 0.180	REF. NO. 239C6800VW
DISTRIBUTION: MMP	SHEET 1 OF 1	

Marks:

**Connection Diagram**  
**GEM2034E-FIG1**



End shield Assembly		
Part Description	DE Side Part#	ODE Side Part#
End Shield	115E4355AA1	115E4355LM1
Bearing	235A2514AG01	235A2514AG01
Slinger/Inproseal	235A4575GS5	235A4575GS5

Fan & Fan Cover Assembly	
Part Description	Part#
Fan	159C7100G03
Fan Cover	128D6841AA1

Conduit & Accessories Box Assembly	
Part Description	Part#
Conduit Box	118D4408DG2

Mechanical Accessories	
Part Description	Part#
Brake	
Tachometer	