

Product Information Packet

November 8, 2016

Data shown is for the current revision model #. Ensure your nameplate model # matches.

Model Number:	5KS324SAA405D
Catalog Number:	M9173
Instruction Manual:	GEI-56128
Connection Diagram:	GEM2034E-FIG9
Outline Drawing:	239C6000AE

Accessory Connection Diagrams			
Bearing Thermocouple:	None	Heater:	None
RTD:	None	Thermistor:	None
Thermostat:	None	Winding Thermocouple:	None
Bearing RTD:	None		

Table of Contents

Specification	01
Performance Characteristics	02
Outline Drawing	03
Connection Drawing(s)	04
Spare parts	05



Marks:

MODEL NUMBER:	5KS324SAA405D	Estimated Weight:	620 Lbs
Outline Drawing:	239C6000AE	Time Rating:	CONT
Connection Diagram:	GEM2034E-FIG9	Enclosure:	TEFC
Instruction Book:	GEI-56128	Encl Construction:	X\$D
Design Code:	32BD4036A	Ambient Max(°C):	40
Type:	KS	Alt Ambient Max(°C):	65
Frame:	324T	Insulation Class:	H
Phases:	3	NEMA Design:	B
Poles:	8	Nominal Efficiency:	90.2 %
Output Power:	20HP 14.8KW	Guaranteed Efficiency:	89.5
RPM:	880	3/4 Load Efficiency:	90.7
Voltage:	230/460	KVA Code:	G
Hertz:	60	Max KVAR:	12.8
Amps - FL:	62.0/31.0	Power Factor:	67.0
Service Factor:	1.25	Bearing - DE:	6312ZC3
Alt Service Factor:	1.00	Bearing - ODE:	6312ZC3

Enclosure is Totally Enclosed Fan-Cooled

Stamped Nameplate Notes:

SF AMPS 74.5/37.2
 STAMP NP249A5564P051 AS BELOW:
 MODEL:5KS324SAA405D S/N: XXX
 CSA CERTIFIED CSA09.2216219 FOR EX NA IIC 200 C GC
 CL 1 ZONE2 AEX NA IIC 200C;CL 1 DIV2 GRP ABCD 200C
 IN -40C <= AMB <= 40C, 1.0 SF ON SINE-WAVE PWR
 SURF TEMP 280C AT 1.25SF ON SINE-WAVE PWR
 OR 200C VT OR 230C CT OR 200C CHP PWM CONTROL
 ALTERNATE RATING FOR PWM CONTROL 1.0SF 40C AMB
 VT 0 - 60 HZ, CT 4-60 HZ, CHP 60-90 HZ.

Additional Information:

8P - T EXTN
 346 CU IN - 3.00" NPT
 OIL RESISTANT SLEEVING ON LEADS
 F1 MOUNTING

Performance Characteristics

1st Winding 1st Connection

Design: 32BD4036A

Marks:

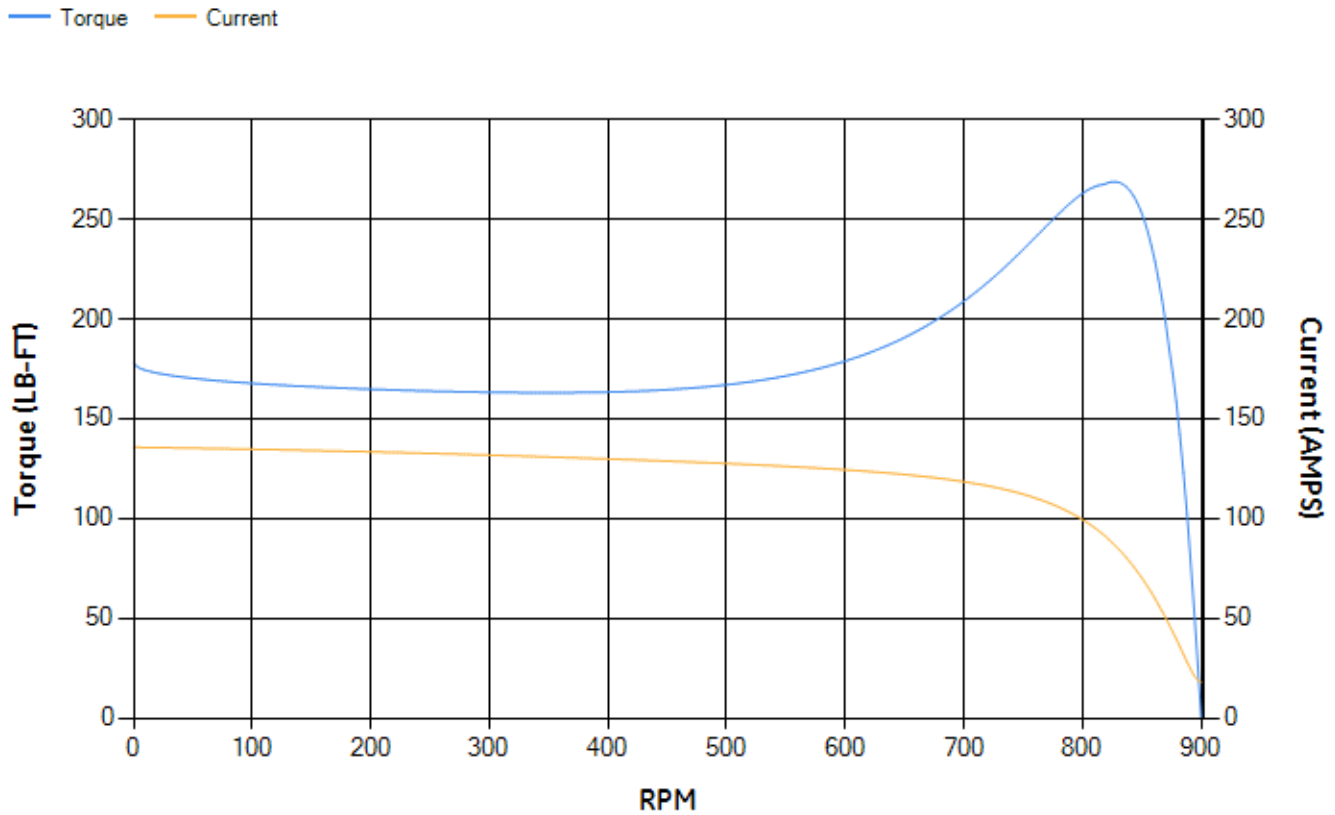
LOAD %	125.0	115.0	100.0	75.0	50.0	25.0	0.0
% EFF	89.16	89.69	90.49	90.68	89.78	84.71	0.00
% PF	70.48	69.38	66.88	59.84	47.73	28.93	3.89
AMPS	37.24	34.59	30.9	25.87	21.84	19.1	17.85

TORQ(FL)#FT	119.3	TORQ(LR)%FL	149.36	TORQ(BD)%FL	223.27
AMPS(LR)	135.65	PF AT START	0.35		

This motor is capable of two cold or one hot start with a maximum connected load inertia of 3547 Lb-Ft Sq (149.33 Kg-meter Sq)at 100% voltage, where the load torque varies with the square of the speed. Acceleration time with maximum inertia and the above load type is 71 seconds. Safe stall time at 100% voltage is 149 seconds cold, 85 seconds hot. Rotor inertia is 7.25 Lb-Ft Sq (0.31 Kg-meter Sq).

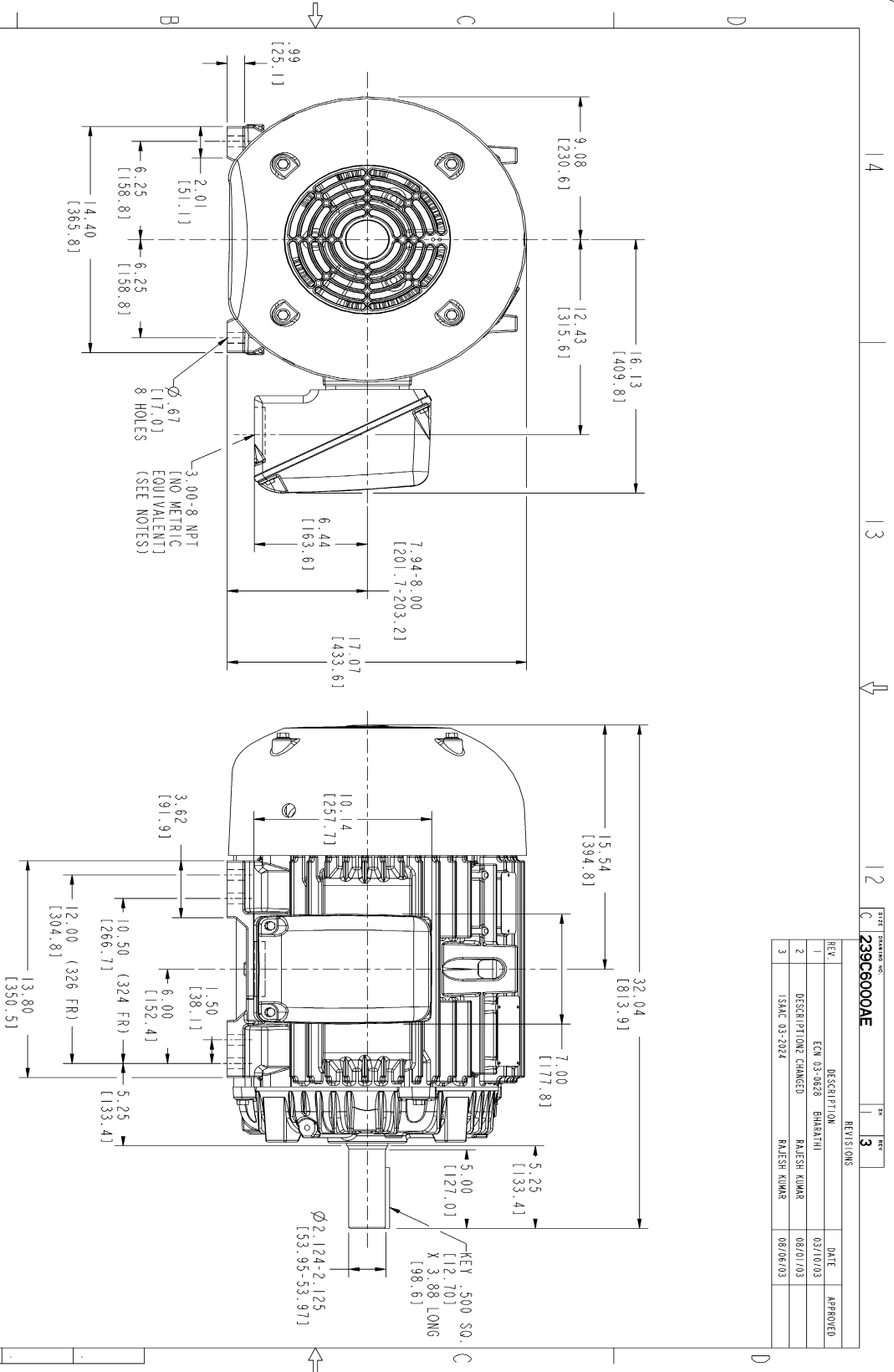
Open Circuit A-C:	0.185	Short Circuit D-C:	0.016
Short Circuit A-C:	0.02	X/R Ratio:	6.118
Stator Slots:	54	Rotor Slots:	40

Speed Torque Current Curve (First Connection, First Speed)



NAME: 103016807 OBJECT: 239C6000AE DATE: 07-Aug-03 23:25:11

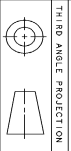
Marks:



NOTES :

1. CONDUIT BOX MAY BE PLACED WITH THE ENTRANCE DOWN, UP OR ON EITHER SIDE.
2. F-1 ASM AS SHOWN.
3. F-2 ASM HAS CONDUIT BOX ON OPPOSITE SIDE.
4. BRACKETED DIMENSIONS ARE METRIC (MILLIMETERS).

REV.	DESCRIPTION	DATE	APPROVED
1	EQ 03-0628 BHARATHI	03/10/03	
2	DESCRIPTION CHANGED	08/01/03	
3	ISSAC 03-2024	08/06/03	



THIRD ANGLE PROJECTION

SIGNATURES	DATE	GENERAL ELECTRIC COMPANY
DESIGNER: WABRKL 03/13/02		 OUTLINE 324/326 TFC 346 CU. IN. CONDUIT BOX 239C6000AE
DRAWN: WABRKL 03/13/02		
APPLIED PRACTICES		
SCALE: 0.250	REF. NO:	
		SHEET 0F 1
		REV: 3
		DISTRIBUTION: MMP

Marks:

Connection Diagram
GEM2034E-FIG9



End shield Assembly		
Part Description	DE Side Part#	ODE Side Part#
End Shield	115E4200AA1	115E4200LA1
Bearing	235A2609AA01	235A2609AA01
Slinger/Inproseal	149C4399G04	149C4399G04

Fan & Fan Cover Assembly	
Part Description	Part#
Fan	159C7000G01
Fan Cover	128D6800AA1

Conduit & Accessories Box Assembly	
Part Description	Part#
Conduit Box	149C4429AA2

Mechanical Accessories	
Part Description	Part#
Brake	
Tachometer	