

Product Information Packet

November 8, 2016

Data shown is for the current revision model #. Ensure your nameplate model # matches.

Model Number:	5KS184STE205F2RG3
Catalog Number:	M7559
Instruction Manual:	GEI-M1031
Connection Diagram:	GEM2034E-FIG203
Outline Drawing:	358B6270AC

Accessory Connection Diagrams			
Bearing Thermocouple:	None	Heater:	None
RTD:	None	Thermistor:	None
Thermostat:	None	Winding Thermocouple:	None
Bearing RTD:	None		

Table of Contents	
Specification	01
Performance Characteristics	02
Outline Drawing	03
Connection Drawing(s)	04

Marks:

MODEL NUMBER:	5KS184STE205F2RG3	Estimated Weight:	113 Lbs
Outline Drawing:	358B6270AC	Time Rating:	CONT
Connection Diagram:	GEM2034E-FIG203	Enclosure:	TEFC
Instruction Book:	GEI-M1031	Encl Construction:	SD
Design Code:	18AD1021A	Ambient Max(°C):	40
Type:	KS	Alt Ambient Max(°C):	--
Frame:	184T	Insulation Class:	F
Phases:	3	NEMA Design:	A
Poles:	4	Nominal Efficiency:	89.5 %
Output Power:	5HP 3.7KW	Guaranteed Efficiency:	87.5
RPM:	1750	3/4 Load Efficiency:	91.3
Voltage:	230/460	KVA Code:	K
Hertz:	60	Max KVAR:	1.8
Amps - FL:	12.6/6.3	Power Factor:	83
Service Factor:	1.15	Bearing - DE:	6207ZZC3
Alt Service Factor:	--	Bearing - ODE:	6206ZZC3

Enclosure is Totally Enclosed Fan-Cooled

Stamped Nameplate Notes:

USABLE AT 200V @ 5 HP,14.1 AMPS @ 1.0 SF

LRA: 110.8/55.4

50HZ DATA: 3 HP,200/400V, 10.4/5.2 AMPS @ 1.15 SF

50HZ DATA: 5 HP, 200/400V,14.4/7.2 AMPS @ 1.00 SF

GREASE TYPE: SHELL ALVANIA R3 LITHIUM GREASE

Additional Information:

CONDUIT BOX VOLUME (CU IN): 47.1

CONDUIT BOX MATERIAL: CAST IRON

INVERTER DUTY PER NEMA MG1 PART 31

FOR VARIABLE TORQUE LOADS

BAM 1/12



Performance Characteristics

1st Winding 1st Connection

Design: 18AD1021A

Marks:

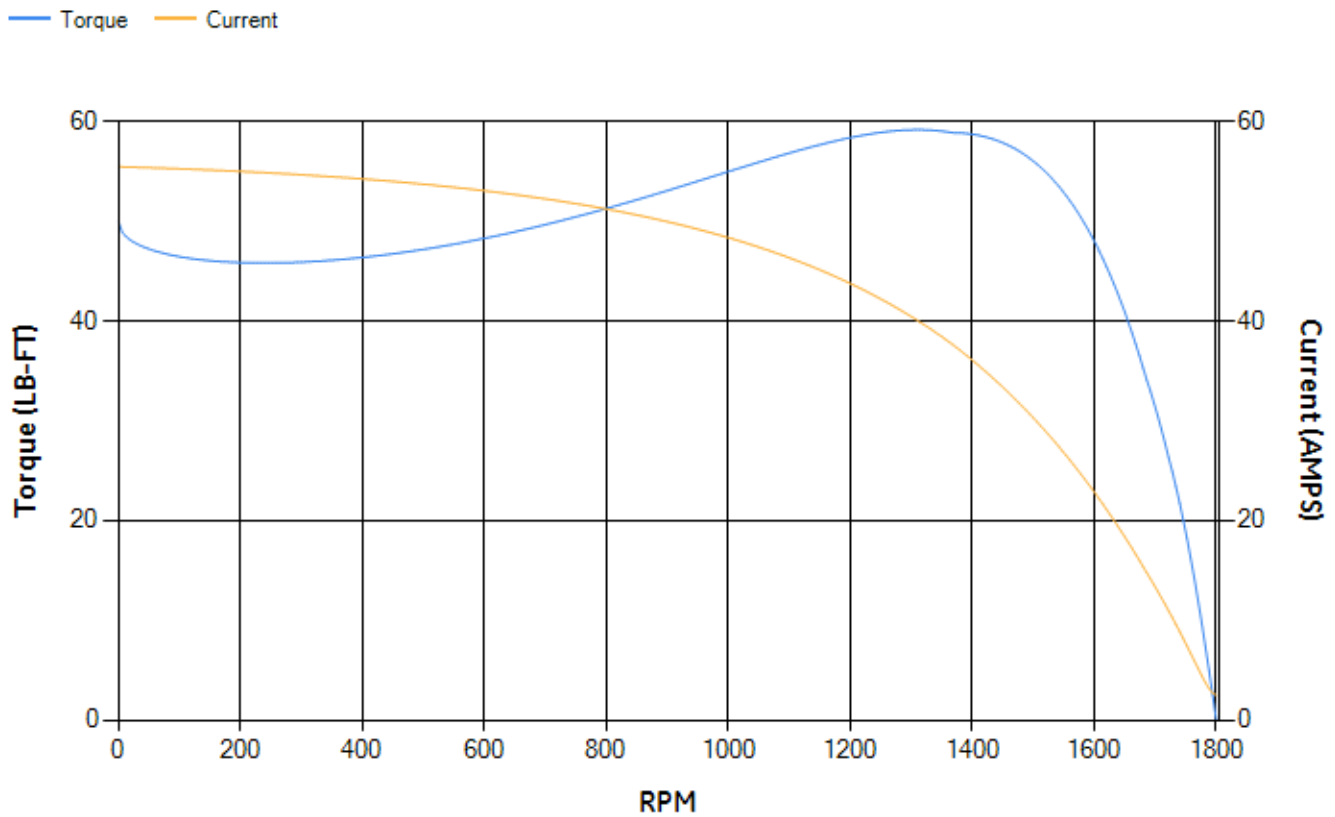
LOAD %	125.0	115.0	100.0	75.0	50.0	25.0	0.0
% EFF	89.12	89.72	90.68	91.29	91.07	87.44	0.00
% PF	85.04	84.48	83.08	78.45	68.27	46.11	5.6
AMPS	7.72	7.1	6.21	4.9	3.76	2.9	2.5

TORQ(FL)#FT	14.98	TORQ(LR)%FL	333.44	TORQ(BD)%FL	385.89
AMPS(LR)	55.45	PF AT START	0.5		

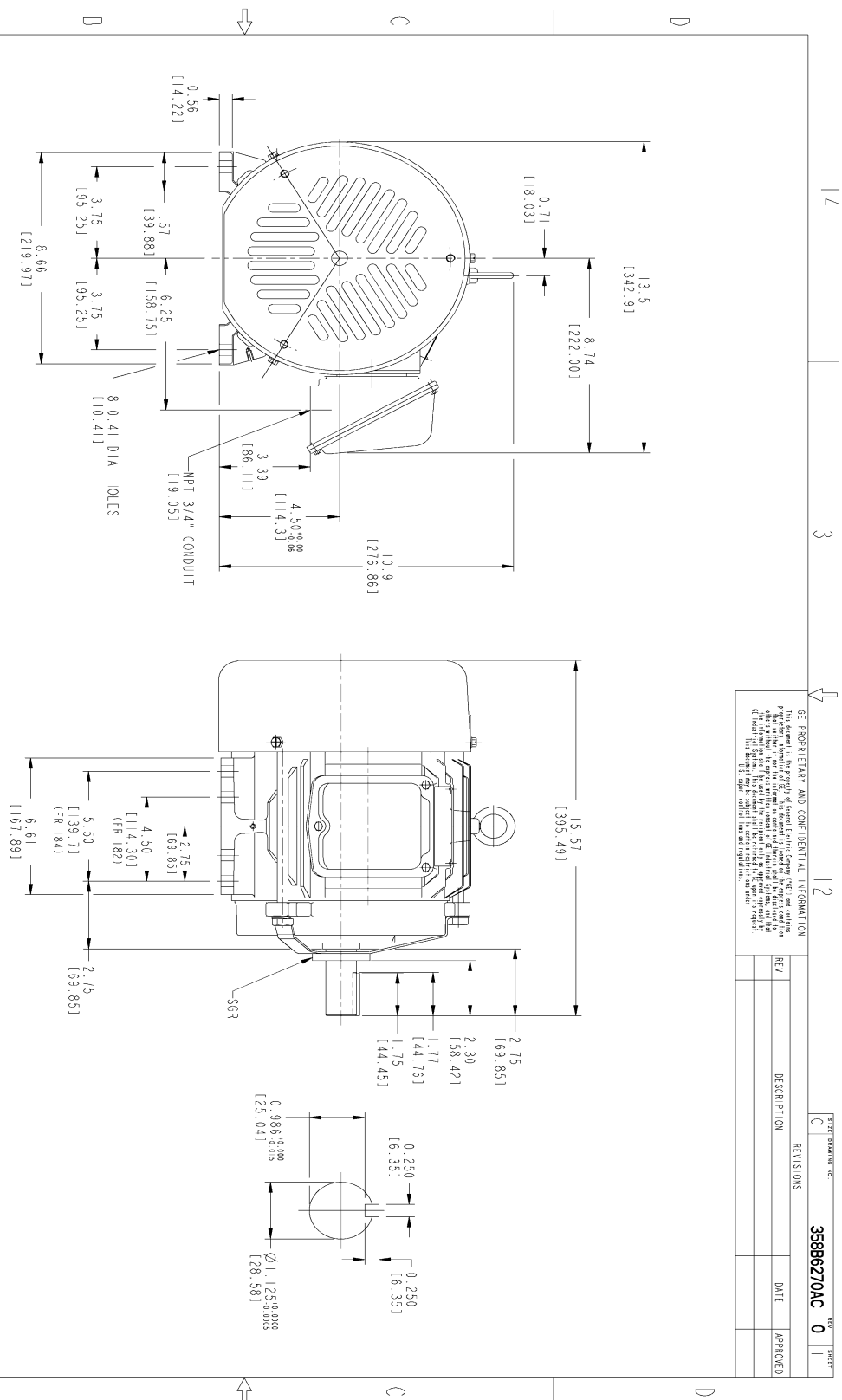
This motor is capable of two cold or one hot start with a maximum connected load inertia of 131 Lb-Ft Sq (5.52 Kg-meter Sq)at 100% voltage, where the load torque varies with the square of the speed. Acceleration time with maximum inertia and the above load type is 17 seconds. Safe stall time at 100% voltage is 40 seconds cold, 27 seconds hot. Rotor inertia is 0.46 Lb-Ft Sq (0.02 Kg-meter Sq).

Open Circuit A-C:	0.239	Short Circuit D-C:	0.007
Short Circuit A-C:	0.009	X/R Ratio:	2.676
Stator Slots:	36	Rotor Slots:	28

Speed Torque Current Curve (First Connection, First Speed)



Marks:



NOTES :

1. DIMENSIONS ARE IN INCHES.
2. F-1 ASW AS SHOWN.
3. F-2 ASW - HAS CONDUIT BOX ON OPPOSITE SIDE.
4. BRACKETED DIMENSIONS ARE METRIC (MILLIMETERS)
5. ICA11, 1P54, 1M34 APPLY

GE PROPRIETARY AND CONFIDENTIAL INFORMATION

This document is the property of General Electric Company ("GE") and contains information that is confidential and/or proprietary to GE. It is intended for internal use only. It is not to be distributed, copied, or otherwise used without the prior written consent of GE. If you are not an authorized user, you should not have received this document. If you have received this document in error, please notify the sender immediately. All rights reserved. GE, the GE logo, and the GE monogram are trademarks of General Electric Company. © 2016 GE. All rights reserved.

REV.	DESCRIPTION	DATE	APPROVED

SIZE: DRAWING NO. 358B6270AC REV. 0 SHEET 1 OF 1

SIGNATURES		DATE	
MODEL	SHANKAR	06/24/11	
SCALE	VENMA J	06/24/11	
DESIGN	VENMA J	06/24/11	
DATE			
QUALITY			
ISSUED	SHANKAR	06/24/11	

GE Motors GENERAL ELECTRIC COMPANY

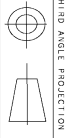
TITLE: **OUTLINE**

FTD - 1821/184T TERC CE MARK WITH SGR

471 CU IN CONDUIT BOX

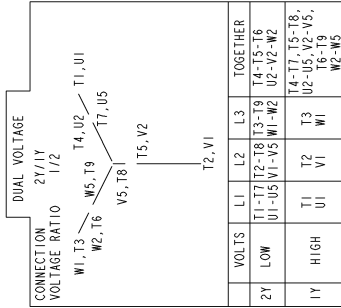
SIZE: DRAWING: 358B6270AC REV: 0

SCALE: DRAWING SCALE: SHEET 1 OF 1



Marks:

Connection Diagram
GEM2034E-FIG203



NAME: 500903578 OBJECT: GEM2034E-FIG203 DATE: 03-Nov-06 13:53:10