

# Product Information Packet

June 10, 2017

Data shown is for the current revision model #. Ensure your nameplate model # matches.

<b>Model Number:</b>	<b>5KS284DAE6043C</b>
<b>Catalog Number:</b>	<b>V4408</b>
<b>Instruction Manual:</b>	GEK-95353
<b>Connection Diagram:</b>	GEM2034E-FIG9
<b>Outline Drawing:</b>	4002B5828NMP5212

Accessory Connection Diagrams			
<b>Bearing Thermocouple:</b>	None	<b>Heater:</b>	3027JE-1C
<b>RTD:</b>	None	<b>Thermistor:</b>	None
<b>Thermostat:</b>	None	<b>Winding Thermocouple:</b>	None
<b>Bearing RTD:</b>	None		

## Table of Contents

Specification	01
Performance Characteristics	02
Outline Drawing	03
Connection Drawing(s)	04
Spare parts	05



**Marks:**

<b>MODEL NUMBER:</b>	<b>5KS284DAE6043C</b>	<b>Estimated Weight:</b>	420 Lbs
<b>Outline Drawing:</b>	4002B5828NMP5212	<b>Time Rating:</b>	CONT
<b>Connection Diagram:</b>	GEM2034E-FIG9	<b>Enclosure:</b>	WPI
<b>Instruction Book:</b>	GEK-95353	<b>Encl Construction:</b>	OPEN
<b>Design Code:</b>	28BD1161A	<b>Ambient Max(°C):</b>	40
<b>Type:</b>	KS	<b>Alt Ambient Max(°C):</b>	--
<b>Frame:</b>	L284TP12	<b>Insulation Class:</b>	H
<b>Phases:</b>	3	<b>NEMA Design:</b>	B
<b>Poles:</b>	4	<b>Nominal Efficiency:</b>	93.6 %
<b>Output Power:</b>	25HP 18.5KW	<b>Guaranteed Efficiency:</b>	92.4 %
<b>RPM:</b>	1780	<b>3/4 Load Efficiency:</b>	--
<b>Voltage:</b>	230/460	<b>KVA Code:</b>	G
<b>Hertz:</b>	60	<b>Max KVAR:</b>	7.4
<b>Amps - FL:</b>	58.8/29.4	<b>Power Factor:</b>	85.0
<b>Service Factor:</b>	1.15	<b>Bearing - DE:</b>	7310
<b>Alt Service Factor:</b>	--	<b>Bearing - ODE:</b>	6210-2ZC3

**Enclosure is Weather Protected One**

---

**Stamped Nameplate Notes:**

PREMIUM EFFICIENT MOTOR  
 NEMA ENCL WPI AND CSA ENCL DP  
 ROT CCW FACING ODE LEAD/PH SEQUENCE 1-2-3/1-2-3  
 HTR LDS HE1-HE2 115V 60W  
 INVERTER DUTY PER NEMA MG1 PART 31  
 ALTERNATE RATING FOR PWM CONTROL:  
 1.0 SF VAR TORQUE RANGE 20-60 HZ  
 SUITABLE FOR 20HP, 190/380V,  
 50 HZ WITH 57/28.5AMPS AND 1480 RPM AT 1.0 SF

**Additional Information:**

4P - TP EXTN  
 C/BOX 137 CU IN-1.50 NPT  
 AUX LEADS EXIT WITH MOTOR LEADS  
 RCF 5000 CPM, STATIC DEFLECTION .0014 INCHES &  
 CENTER OF GRAVITY 12.00 INCHES  
 HOLLOW SHAFT HIGH THRUST  
 OIL RESISTANT SLEEVING ON LEADS  
 BEARING LIFE 8760 HOURS AT 2960 LB THRUST  
 BALL TYPE COUPLING  
 COUPLING WILL BE ORDERED SEPARATELY

**Performance Characteristics**

1st Winding 1st Connection

**Design: 28BD1161A**

**Marks:**

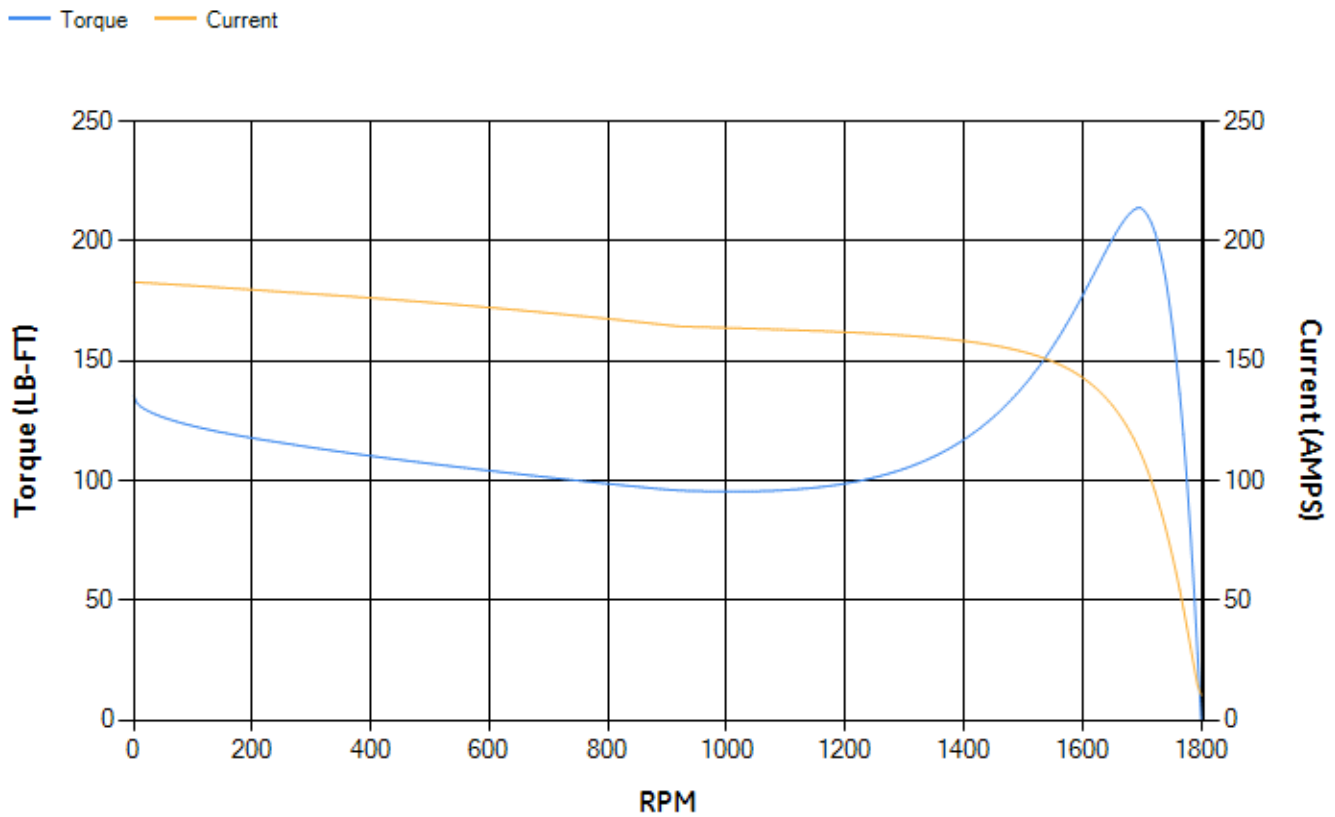
LOAD %	125.0	115.0	100.0	75.0	50.0	25.0	0.0
% EFF	92.67	93.04	93.72	94.02	93.81	91.15	0.00
% PF	86.45	86.15	85.22	81.69	73.02	51.27	4.62
AMPS	36.51	33.57	29.28	22.85	17.08	12.52	10.32

<b>TORQ(FL)#FT</b>	73.74	<b>TORQ(LR)%FL</b>	183.55	<b>TORQ(BD)%FL</b>	289.22
<b>AMPS(LR)</b>	182.83	<b>PF AT START</b>	0.39		

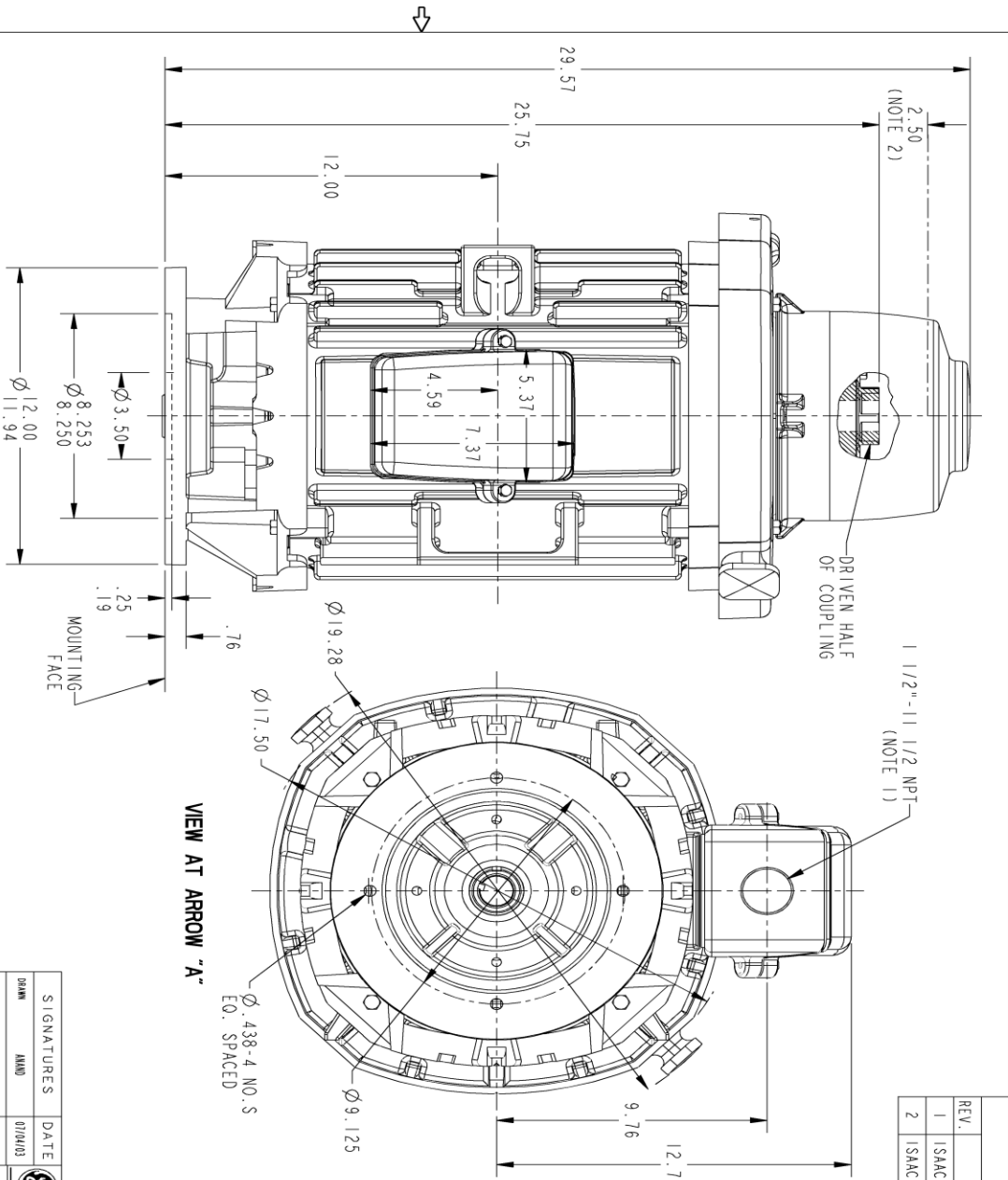
This motor is capable of two cold or one hot start with a maximum connected load inertia of 873 Lb-Ft Sq (36.75 Kg-meter Sq)at 100% voltage, where the load torque varies with the square of the speed. Acceleration time with maximum inertia and the above load type is 54 seconds. Safe stall time at 100% voltage is 94 seconds cold, 80 seconds hot. Rotor inertia is 4.59 Lb-Ft Sq (0.19 Kg-meter Sq).

<b>Open Circuit A-C:</b>	0.665	<b>Short Circuit D-C:</b>	0.016
<b>Short Circuit A-C:</b>	0.03	<b>X/R Ratio:</b>	5.967
<b>Stator Slots:</b>	48	<b>Rotor Slots:</b>	40

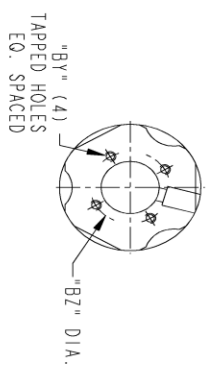
**Speed Torque Current Curve (First Connection, First Speed)**



Marks:



REV.	DESCRIPTION	DATE	APPROVED
1	ISAAC NO: #12-0161	02/13/12	SRAVANTHI
2	ISAAC # 13-0028	1/14/13	DHEERAJ

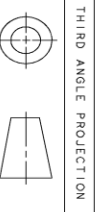


DRIVEN HALF OF COUPLING

COUPLING KIT	GB	"BY"	"BZ"	BORE DIA.	"W"	"D"
1	1/4-20	1.750	1.252	1.251		
2	1/4-20	1.750	1.189	1.188	.250	.125
3	#10-32	1.375	1.002	.877		
4	#10-32	1.375	.876	.876		
5	1/4-20	1.750	.752	.751		
7	1/4-20	1.750	1.252	1.251	.375	.188
1	1/4-20	1.750	1.252	1.251		
2	1/4-20	1.750	1.189	1.188	.250	.125
3	#10-32	1.375	1.002	.877		
4	#10-32	1.375	.876	.876		
5	1/4-20	1.750	.752	.751	.188	.094
7	1/4-20	1.750	1.252	1.251	.375	.188

NOTE 1: CONDUIT BOX MAY BE ASSEMBLED WITH ENTRANCE UP, DOWN OR TO EITHER SIDE.

NOTE 2: THE TOTAL HEIGHT OF PUMP SHAFT & LOCKING NUT ABOVE TOP OF COUPLING, MUST NOT EXCEED THIS DIMENSION



THIRD ANGLE PROJECTION

SIGNATURES	DATE
DRW: AMU	07/04/03
CHECKED: BS PRASADH	07/04/03
ENGR: AMU	07/04/03
ISSUED: AMU	07/04/03

GE Industrial Systems  
**INDUCTION MOTOR OUTLINE**  
 HOLLOW SHAFT - HIGH THRUST (BD-12)  
 FME: FR280 WP-1 STANDARD "P" BASE VERTICAL  
**4002B5828NMP5212**  
 SCALE: 0.250 REF. NO: 4002B5828NMP212 SHEET 1 OF 1

DISTRIBUTION: PMP-18K15

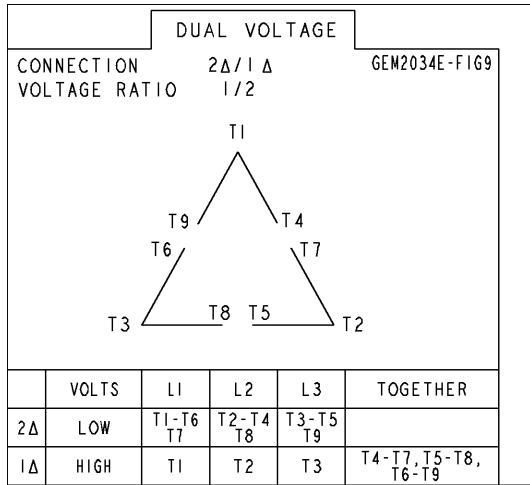
SIZE: B  
 DRAWING NO: 4002B5828NMP5212

REV: 2

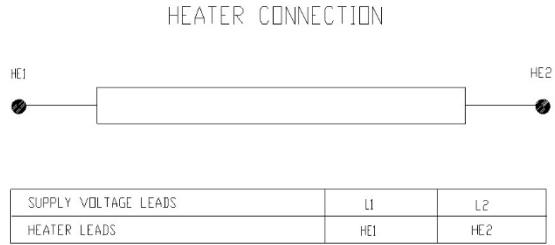
REVISIONS

Marks:

**Connection Diagram**  
**GEM2034E-FIG9**



**Heater Connection**  
**3027JE-1C**



End shield Assembly		
Part Description	DE Side Part#	ODE Side Part#
End Shield	128D6235AB1	128D6228PA1
Bearing	235A2508ET01	235A2508AK01
Slinger/Inproseal	235A2300FL2	

Fan & Fan Cover Assembly	
Part Description	Part#
Fan	
Fan Cover	

Conduit & Accessories Box Assembly	
Part Description	Part#
Conduit Box	4002B5728PA-G01

Mechanical Accessories	
Part Description	Part#
Brake	
Tachometer	

