

# Product Information Packet

November 7, 2016

Data shown is for the current revision model #. Ensure your nameplate model # matches.

<b>Model Number:</b>	<b>5KS364CAG305B</b>
<b>Catalog Number:</b>	<b>E9285</b>
<b>Instruction Manual:</b>	GEI-56128
<b>Connection Diagram:</b>	GEM2034E-FIG9
<b>Outline Drawing:</b>	225B5200AL

<b>Accessory Connection Diagrams</b>			
<b>Bearing Thermocouple:</b>	None	<b>Heater:</b>	None
<b>RTD:</b>	None	<b>Thermistor:</b>	None
<b>Thermostat:</b>	None	<b>Winding Thermocouple:</b>	None
<b>Bearing RTD:</b>	None		

## Table of Contents

Specification	01
Performance Characteristics	02
Outline Drawing	03
Connection Drawing(s)	04
Spare parts	05



**Marks:**

<b>MODEL NUMBER:</b>	<b>5KS364CAG305B</b>	<b>Estimated Weight:</b>	1070 Lbs
<b>Outline Drawing:</b>	225B5200AL	<b>Time Rating:</b>	CONT
<b>Connection Diagram:</b>	GEM2034E-FIG9	<b>Enclosure:</b>	TEFC
<b>Instruction Book:</b>	GEI-56128	<b>Encl Construction:</b>	XP
<b>Design Code:</b>	36ED3039A	<b>Ambient Max(°C):</b>	40
<b>Type:</b>	KS	<b>Alt Ambient Max(°C):</b>	XX
<b>Frame:</b>	364T	<b>Insulation Class:</b>	F
<b>Phases:</b>	3	<b>NEMA Design:</b>	A
<b>Poles:</b>	6	<b>Nominal Efficiency:</b>	94.1 %
<b>Output Power:</b>	40HP 29.6KW	<b>Guaranteed Efficiency:</b>	93.0
<b>RPM:</b>	1185	<b>3/4 Load Efficiency:</b>	94.9
<b>Voltage:</b>	230/460	<b>KVA Code:</b>	H
<b>Hertz:</b>	60	<b>Max KVAR:</b>	9.8
<b>Amps - FL:</b>	93.6/46.8	<b>Power Factor:</b>	85.0
<b>Service Factor:</b>	1.0	<b>Bearing - DE:</b>	6314ZC3
<b>Alt Service Factor:</b>	XX	<b>Bearing - ODE:</b>	6314ZC3

**Enclosure is Totally Enclosed Fan-Cooled**

---

**Stamped Nameplate Notes:**

EXPLOSION PROOF MOTOR  
TEMP CODE T3C  
THERMOSTAT LEADS TB1-TB2:TRIP

**Additional Information:**

STAMP NP235A3573 AS FOLLOWS:  
CL I GR C&D CL II GR F&G  
6 POLE, T SHAFT EXTN  
EXPLOSION PROOF  
(3)NC THERMOSTAT LEADS TO MAIN CONDUIT BOX  
920 Cu. In. CBOX

**Performance Characteristics**

1st Winding 1st Connection

**Design: 36ED3039A**

**Marks:**

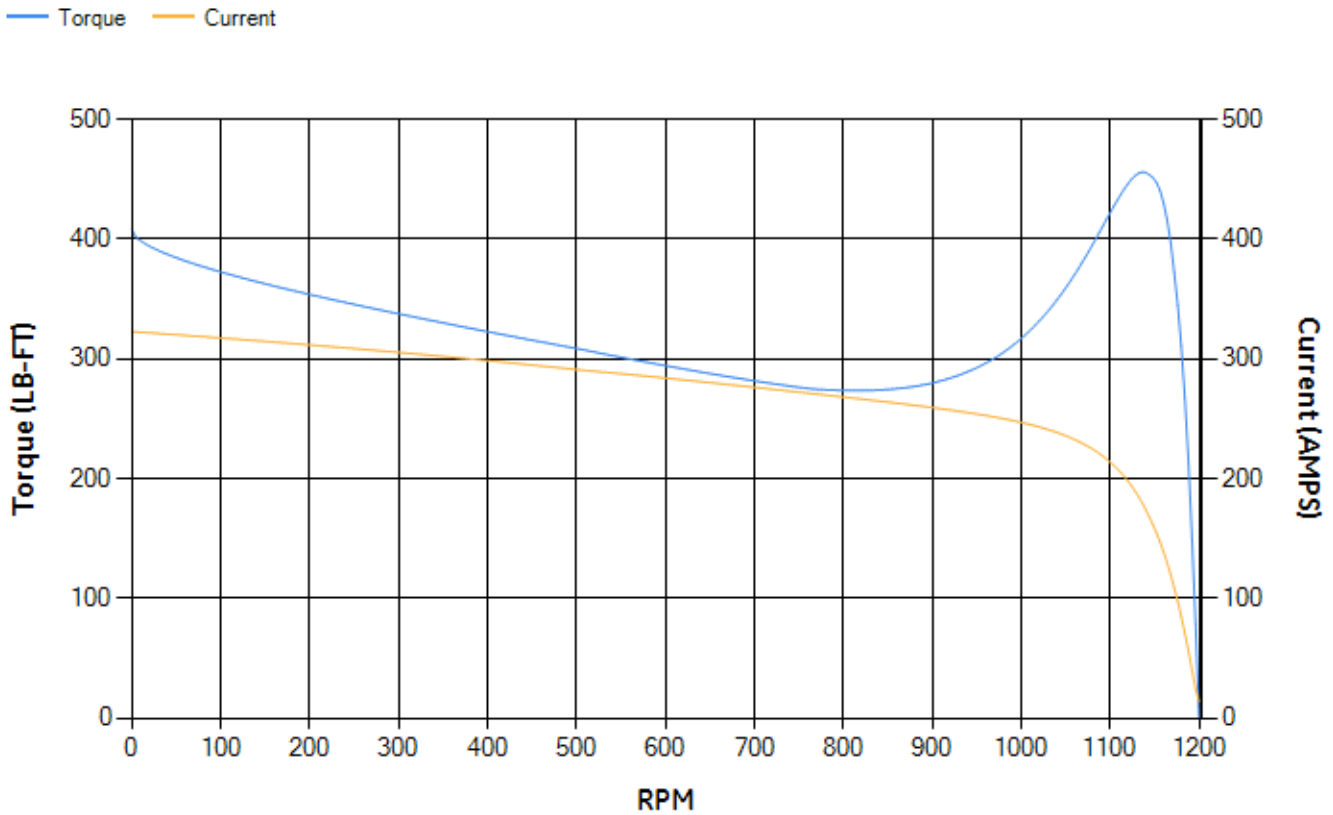
LOAD %	125.0	115.0	100.0	75.0	50.0	25.0	0.0
% EFF	93.6	93.95	94.59	94.85	94.71	92.5	0.00
% PF	85.73	85.69	85.22	82.72	75.78	56.15	4.61
AMPS	58.32	53.48	46.45	35.78	26.08	18.02	13.66

<b>TORQ(FL)#FT</b>	176.86	<b>TORQ(LR)%FL</b>	230.89	<b>TORQ(BD)%FL</b>	257.3
<b>AMPS(LR)</b>	322.76	<b>PF AT START</b>	0.37		

This motor is capable of two cold or one hot start with a maximum connected load inertia of 3414 Lb-Ft Sq (143.73 Kg-meter Sq)at 100% voltage, where the load torque varies with the square of the speed. Acceleration time with maximum inertia and the above load type is 50 seconds. Safe stall time at 100% voltage is 110 seconds cold, 73 seconds hot. Rotor inertia is 31.01 Lb-Ft Sq (1.31 Kg-meter Sq).

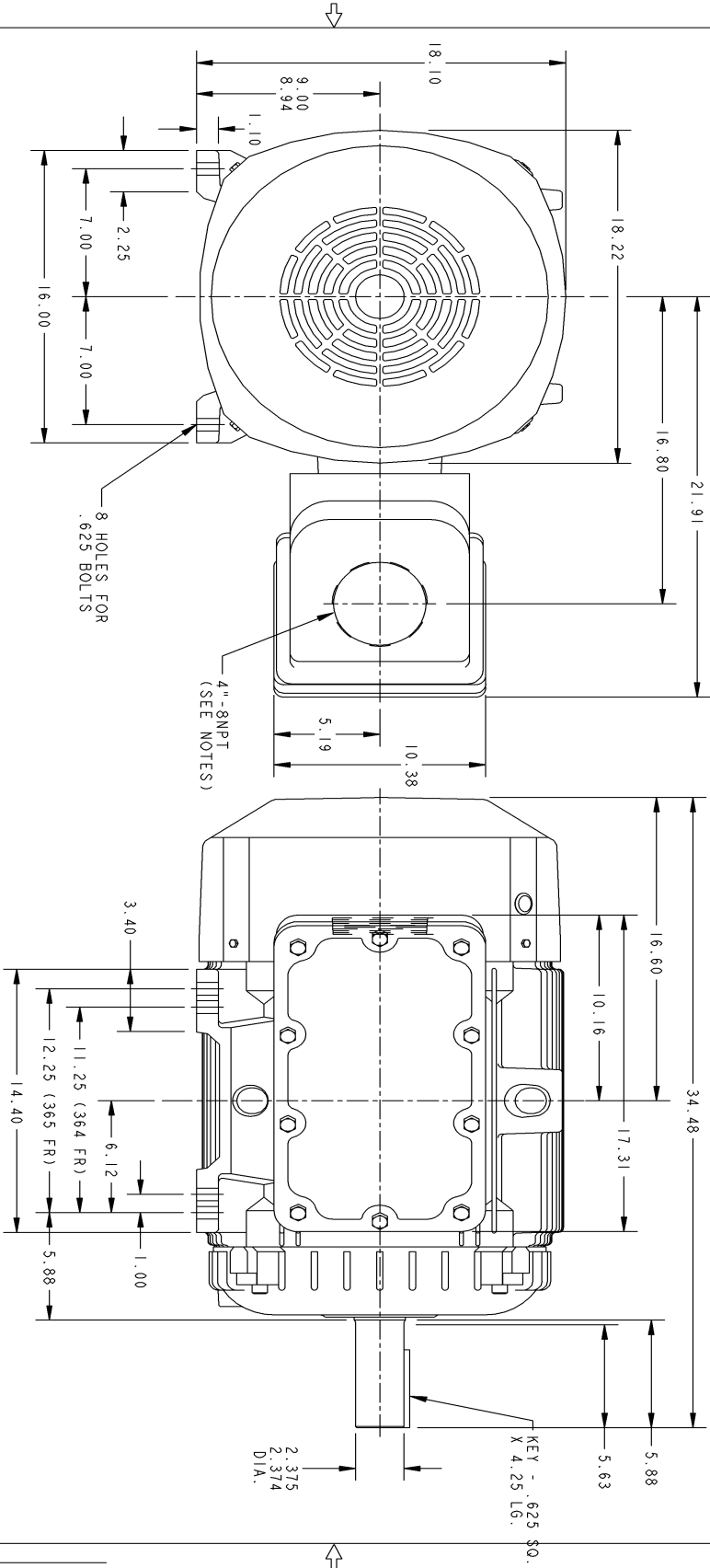
<b>Open Circuit A-C:</b>	0.872	<b>Short Circuit D-C:</b>	0.016
<b>Short Circuit A-C:</b>	0.032	<b>X/R Ratio:</b>	6.098
<b>Stator Slots:</b>	72	<b>Rotor Slots:</b>	60

**Speed Torque Current Curve (First Connection, First Speed)**

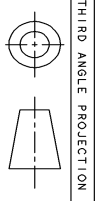


NAME: PT-147 OBJECT: 225B5200AL DATE: 27-Aug-02 14:52:27

Marks:



- NOTES:
1. CONDUIT BOX MAY BE PLACED WITH THE ENTRANCE ON EITHER SIDE OR UP.
  2. F-1 ASM AS SHOWN.
  3. F-2 ASM-COND. BOX ON OPPOSITE SIDE.



SHEET B DWG NO 225B5200AL

REVISIONS			
REV	DESCRIPTION	DATE	APPROVED

UNLESS OTHERWISE SPECIFIED

DIMENSIONS ARE IN INCHES

TOLERANCES ARE:

1. FRACTIONS ±

2. PL DECIMALS ±

3. PL DECIMALS ±

ANGLES ±

FRACCTIONS ±

MATERIAL:

APPLIED PRACTICES:

SIGNATURES	DATE
DRAWN: GIKADAM	26-AUG-02
CHECKED: GIKADAM	26-AUG-02
ENGINEER:	
ISSUED: GIKADAM	26-AUG-02

**GE Motors**  
Fori Wayne, Indiana

**OUTLINE**

364-365 "T" XP (920 CU. IN. BOX)

CAD NO: OH360:225B5200AL

SIZE: FSCM NO: B

DWG NO: 225B5200AL

SCALE: .19

SHEET: 1 OF 1

DISTR TO:

Marks:

**Connection Diagram**  
**GEM2034E-FIG9**



End shield Assembly		
Part Description	DE Side Part#	ODE Side Part#
End Shield	128D6482CA1	128D6482CB1
Bearing	235A2516AC01	235A2516AC01
Slinger/Inproseal		

Fan & Fan Cover Assembly	
Part Description	Part#
Fan	159C7100G01
Fan Cover	36FC6450G001

Conduit & Accessories Box Assembly	
Part Description	Part#
Conduit Box	179B9027G01

Mechanical Accessories	
Part Description	Part#
Brake	
Tachometer	

