

Product Information Packet

November 9, 2016

Data shown is for the current revision model #. Ensure your nameplate model # matches.

Model Number:	5KS215STE222A
Catalog Number:	M7744
Instruction Manual:	GEI-M1031
Connection Diagram:	GEM2034E-FIG210
Outline Drawing:	358B6277AB

Accessory Connection Diagrams			
Bearing Thermocouple:	None	Heater:	None
RTD:	None	Thermistor:	None
Thermostat:	None	Winding Thermocouple:	None
Bearing RTD:	None		

Table of Contents	
Specification	01
Performance Characteristics	02
Outline Drawing	03
Connection Drawing(s)	04



Marks:

MODEL NUMBER:	5KS215STE222A	Estimated Weight:	202 Lbs
Outline Drawing:	358B6277AB	Time Rating:	CONT
Connection Diagram:	GEM2034E-FIG210	Enclosure:	TEFC
Instruction Book:	GEI-M1031	Encl Construction:	SD
Design Code:	21AD1015A	Ambient Max(°C):	40
Type:	KS	Alt Ambient Max(°C):	--
Frame:	215TC	Insulation Class:	F
Phases:	3	NEMA Design:	A
Poles:	4	Nominal Efficiency:	91.7 %
Output Power:	10HP 7.4KW	Guaranteed Efficiency:	90.2
RPM:	1760	3/4 Load Efficiency:	92.6
Voltage:	230/460	KVA Code:	J
Hertz:	60	Max KVAR:	3.2
Amps - FL:	24.4/12.2	Power Factor:	84
Service Factor:	1.15	Bearing - DE:	6308ZZC3
Alt Service Factor:	--	Bearing - ODE:	6208ZZC3

Enclosure is Totally Enclosed Fan-Cooled

Stamped Nameplate Notes:

USABLE AT 200V @ 10 HP,27.3 AMPS @ 1.0 SF

LRA: 194.6/97.3

50HZ DATA: 7.5HP,200/400V,24.4/12.2 AMPS @ 1.15 SF

50HZ DATA: 10 HP,200/400V,27.6/13.8 AMPS @ 1.00 SF

GREASE TYPE: SHELL ALVANIA R3 LITHIUM GREASE

Additional Information:

CONDUIT BOX MATERIAL: CAST IRON

SUITABLE FOR USE IN CLASS I DIVISION 2 LOCATIONS

CLASS I DIVISION 2 GROUPS A,B,C,D T3C

CLASS I ZONE 2 IIC T3C



Performance Characteristics

1st Winding 1st Connection

Design: 21AD1015A

Marks:

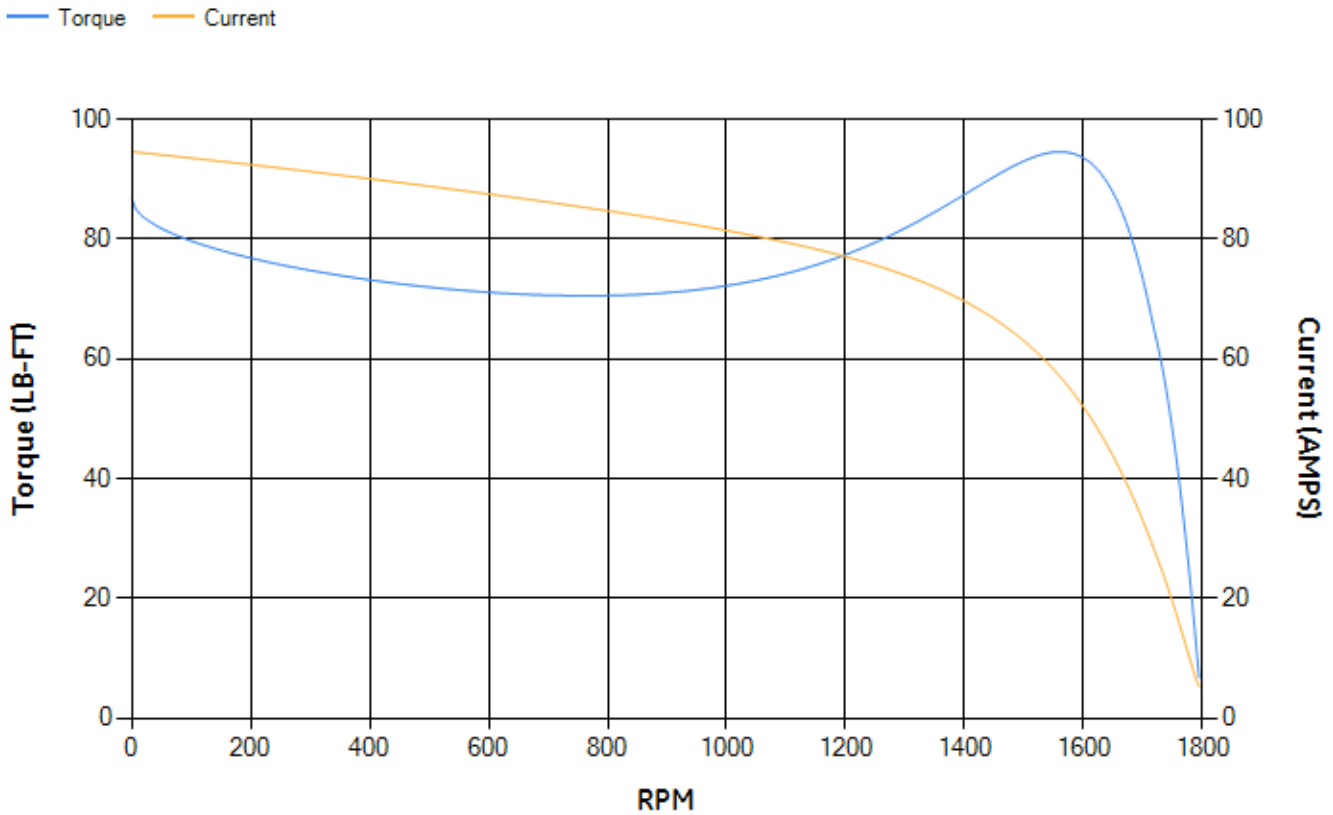
LOAD %	125.0	115.0	100.0	75.0	50.0	25.0	0.0
% EFF	90.71	91.22	92.07	92.57	92.41	89.33	0.00
% PF	85.34	84.92	83.79	79.82	70.62	49.01	5.2
AMPS	15.11	13.89	12.13	9.5	7.17	5.34	4.43

TORQ(FL)#FT	29.81	TORQ(LR)%FL	291.47	TORQ(BD)%FL	314.44
AMPS(LR)	94.59	PF AT START	0.43		

This motor is capable of two cold or one hot start with a maximum connected load inertia of 285 Lb-Ft Sq (12 Kg-meter Sq) at 100% voltage, where the load torque varies with the square of the speed. Acceleration time with maximum inertia and the above load type is 25 seconds. Safe stall time at 100% voltage is 78 seconds cold, 43 seconds hot. Rotor inertia is 1.16 Lb-Ft Sq (0.05 Kg-meter Sq).

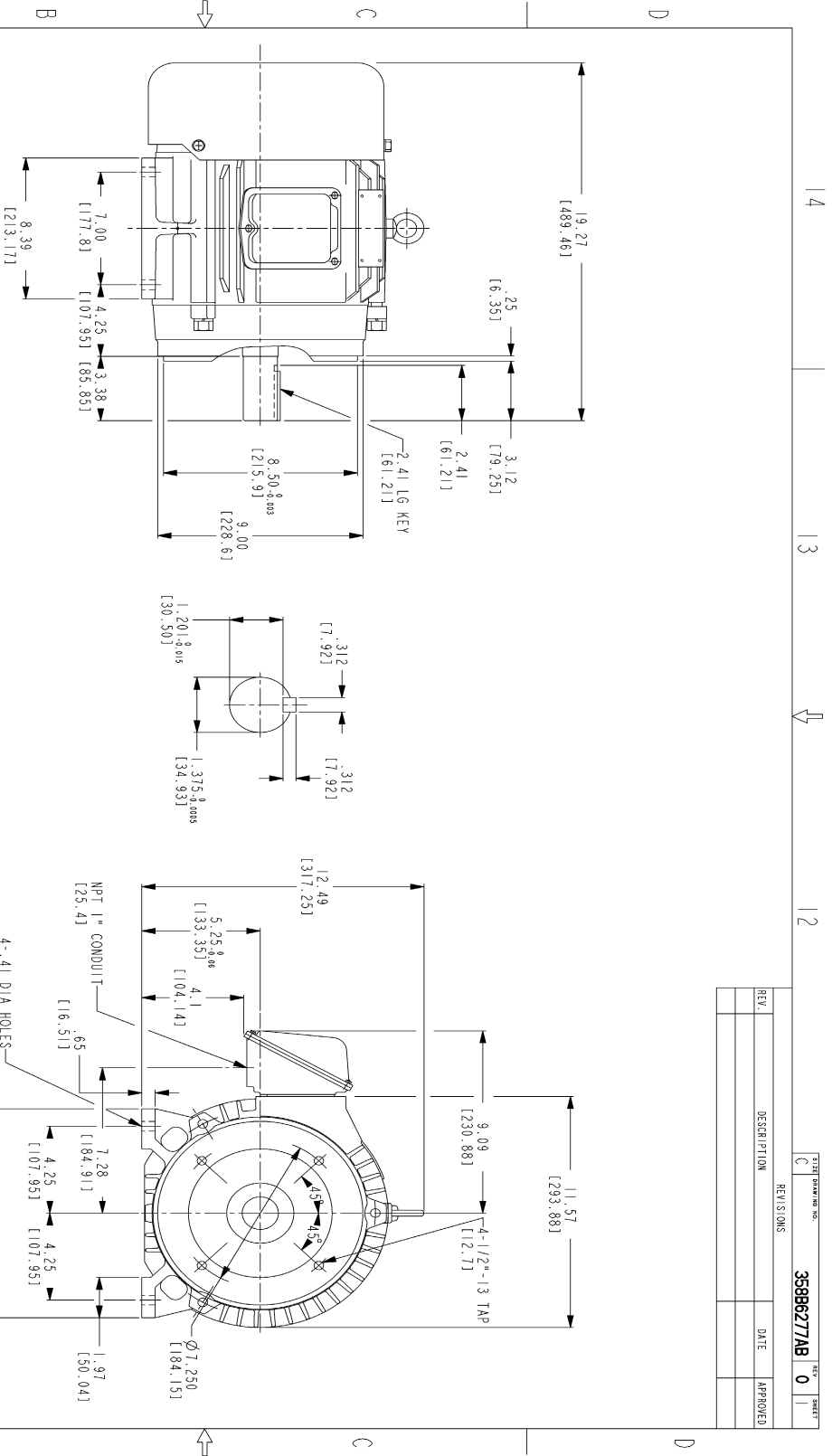
Open Circuit A-C:	0.334	Short Circuit D-C:	0.011
Short Circuit A-C:	0.014	X/R Ratio:	4.157
Stator Slots:	48	Rotor Slots:	40

Speed Torque Current Curve (First Connection, First Speed)



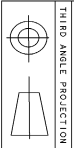
NAME:501291659 OBJECT:358B6277AB DATE:14-Jan-08 12:06:25

Marks:



NOTES:

- 1. DIMENSIONS ARE IN INCHES.
- 2. F-I ASM AS SHOWN.
- 3. F-2 ASM - HAS CONDUIT BOX ON OPPOSITE SIDE.
- 4. BRACKETED DIMENSIONS ARE METRIC (MILLIMETERS)
- 5. ICA11, IP54, IMB34 APPL.Y.



FOR ADDITIONAL INFO REFER TO:	SIGNATURES	DATE
REPORTS		
REVISIONS		
QUOTES OR BIDDING SPECIFICATIONS		
DRAWINGS		
DIMENSIONS ARE IN INCHES		
TOLERANCE ON:		
1. PL DECIMALS ±		
2. PL DECIMALS ±		
3. PL DECIMALS ±		
ANGLES ±		
FRACTIONS ±		
FINISH		

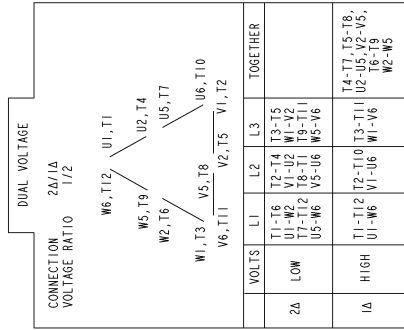
GENERAL ELECTRIC COMPANY	
DATE	TITLE
12/18/07	OUTLINE
12/18/07	F2D - 2B7C TERC GE MARK
12/18/07	66.7 CU IN CONDUIT BOX
12/18/07	
12/18/07	
12/18/07	
12/18/07	
12/18/07	
12/18/07	

Part must conform to SI 9000000
Sect 4, Toxicity Procedure

358B6277AB
REV 0
SHEET 1 OF 1

Marks:

Connection Diagram
GEM2034E-FIG210



NAME:501452353 OBJECT:GEM2034E-FIG210 DATE:25-Feb-08 14:03:35

