

# Product Information Packet

November 8, 2016

Data shown is for the current revision model #. Ensure your nameplate model # matches.

<b>Model Number:</b>	<b>5KS254STE222A</b>
<b>Catalog Number:</b>	<b>M7745</b>
<b>Instruction Manual:</b>	GEI-M1031
<b>Connection Diagram:</b>	GEM2034E-FIG210
<b>Outline Drawing:</b>	358B6278AA

## Accessory Connection Diagrams

<b>Bearing Thermocouple:</b>	None	<b>Heater:</b>	None
<b>RTD:</b>	None	<b>Thermistor:</b>	None
<b>Thermostat:</b>	None	<b>Winding Thermocouple:</b>	None
<b>Bearing RTD:</b>	None		

## Table of Contents

Specification	01
Performance Characteristics	02
Outline Drawing	03
Connection Drawing(s)	04



**Marks:**

<b>MODEL NUMBER:</b>	<b>5KS254STE222A</b>	<b>Estimated Weight:</b>	275 Lbs
<b>Outline Drawing:</b>	358B6278AA	<b>Time Rating:</b>	CONT
<b>Connection Diagram:</b>	GEM2034E-FIG210	<b>Enclosure:</b>	TEFC
<b>Instruction Book:</b>	GEI-M1031	<b>Encl Construction:</b>	SD
<b>Design Code:</b>	25AD1014A	<b>Ambient Max(°C):</b>	40
<b>Type:</b>	KS	<b>Alt Ambient Max(°C):</b>	--
<b>Frame:</b>	254TC	<b>Insulation Class:</b>	F
<b>Phases:</b>	3	<b>NEMA Design:</b>	A
<b>Poles:</b>	4	<b>Nominal Efficiency:</b>	92.4 %
<b>Output Power:</b>	15HP 11.1KW	<b>Guaranteed Efficiency:</b>	91.0
<b>RPM:</b>	1765	<b>3/4 Load Efficiency:</b>	93.0
<b>Voltage:</b>	230/460	<b>KVA Code:</b>	H
<b>Hertz:</b>	60	<b>Max KVAR:</b>	4.4
<b>Amps - FL:</b>	36/18	<b>Power Factor:</b>	84.5
<b>Service Factor:</b>	1.15	<b>Bearing - DE:</b>	6310ZZ
<b>Alt Service Factor:</b>	--	<b>Bearing - ODE:</b>	6208ZZ

**Enclosure is Totally Enclosed Fan-Cooled**

---

**Stamped Nameplate Notes:**

USABLE AT 200V @ 15 HP,40.6 AMPS @ 1.0 SF

LRA: 244.2/122.1

50HZ DATA: 10 HP,200/400V,32.2/16.1 AMPS @ 1.15 SF

50HZ DATA: 15 HP,200/400V,41.2/20.6 AMPS @ 1.00 SF

GREASE TYPE: SHELL ALVANIA R3 LITHIUM GREASE

**Additional Information:**

CONDUIT BOX MATERIAL: CAST IRON

SUITABLE FOR USE IN CLASS I DIVISION 2 LOCATIONS

CLASS I DIVISION 2 GROUPS A,B,C,D T3C

CLASS I ZONE 2 IIC T3C



**Performance Characteristics**

1st Winding 1st Connection

**Design: 25AD1014A**

**Marks:**

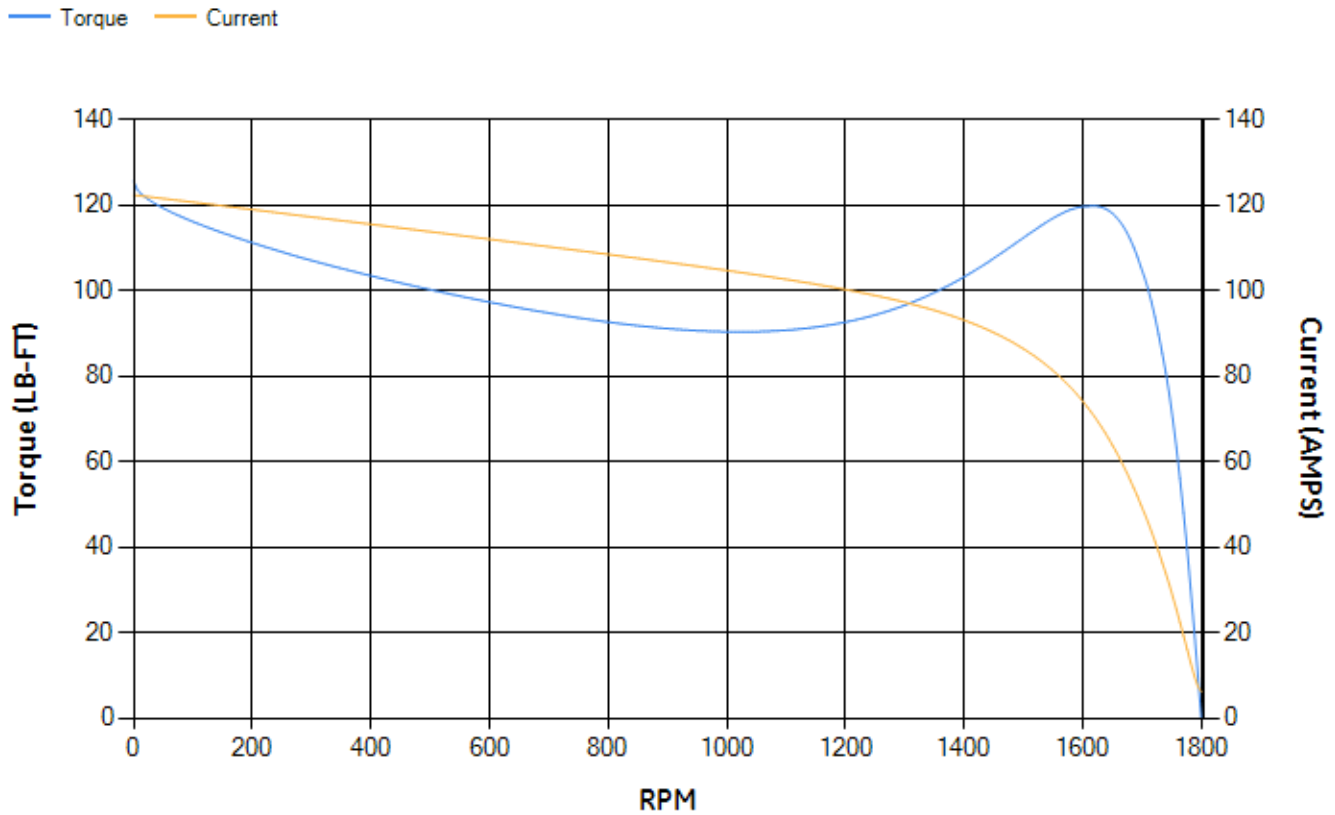
LOAD %	125.0	115.0	100.0	75.0	50.0	25.0	0.0
% EFF	91.7	92.1	92.79	93.02	92.56	89.09	0.00
% PF	85.65	85.42	84.6	81.28	73.03	52.16	6.08
AMPS	22.34	20.52	17.89	13.93	10.38	7.55	6.11

<b>TORQ(FL)#FT</b>	44.57	<b>TORQ(LR)%FL</b>	281.65	<b>TORQ(BD)%FL</b>	266.89
<b>AMPS(LR)</b>	122.3	<b>PF AT START</b>	0.44		

This motor is capable of two cold or one hot start with a maximum connected load inertia of 622 Lb-Ft Sq (26.19 Kg-meter Sq)at 100% voltage, where the load torque varies with the square of the speed. Acceleration time with maximum inertia and the above load type is 42 seconds. Safe stall time at 100% voltage is 71 seconds cold, 56 seconds hot. Rotor inertia is 2.02 Lb-Ft Sq (0.09 Kg-meter Sq).

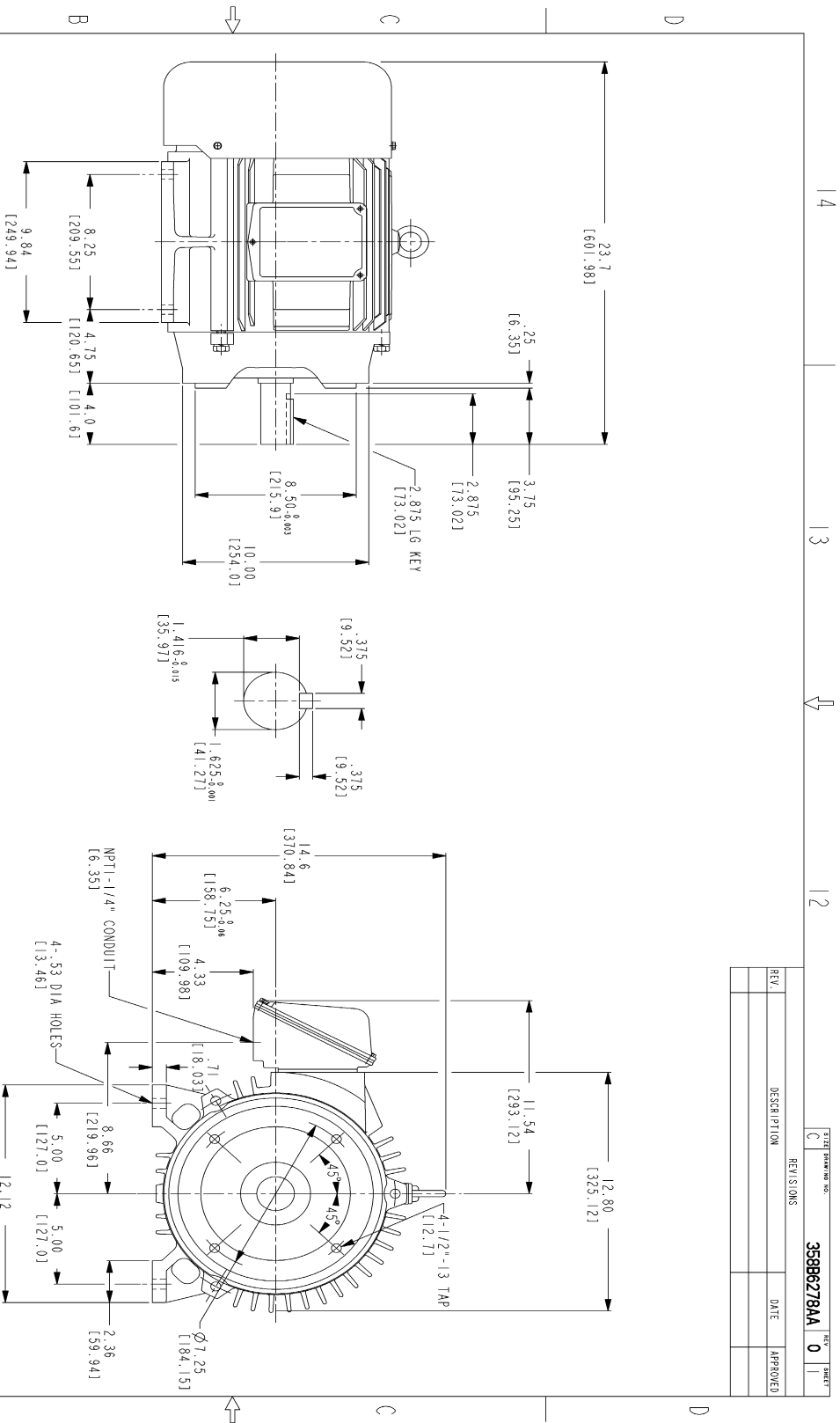
<b>Open Circuit A-C:</b>	0.416	<b>Short Circuit D-C:</b>	0.016
<b>Short Circuit A-C:</b>	0.018	<b>X/R Ratio:</b>	5.974
<b>Stator Slots:</b>	48	<b>Rotor Slots:</b>	40

**Speed Torque Current Curve (First Connection, First Speed)**

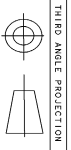


NAME:501291659 OBJECT:358B6278AA DATE:14-Jan-08 12:09:21

Marks:



- NOTES:
1. DIMENSIONS ARE IN INCHES.
  2. F-1 ASM AS SHOWN.
  3. F-2 ASM - HAS CONDUIT BOX ON OPPOSITE SIDE.
  4. BRACKETED DIMENSIONS ARE METRIC (MILLIMETERS)
  5. ICA11, IP54, IMB34 APPLY.



THIRD ANGLE PROJECTION

Part must conform to SI 9000000 Sect 4, Toxicity Procedure

FOR ADDITIONAL INFO REFER TO:	SIGNATURES	DATE
REFLECTED DIMENSIONS ON DRAWING		
DESIGN SPECIFICATIONS		
DETAILS		
DATE		
MODEL		
REVISION		
DATE		
MODEL		
REVISION		
DATE		
MODEL		
REVISION		
DATE		
MODEL		
REVISION		
DATE		

REV.	DESCRIPTION	DATE	APPROVED

GE Consumer & Industrial GENERAL ELECTRIC COMPANY

OUTLINE

F1D - 254TC IERC CE MARK

1005 CU IN CONDUIT BOX

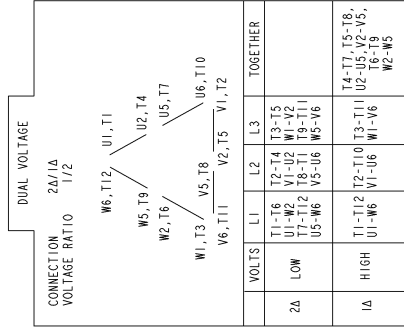
358B6278AA

REV 0

SHEET 1 OF 1

Marks:

**Connection Diagram**  
**GEM2034E-FIG210**



NAME:501452353 OBJECT:GEM2034E-FIG210 DATE:25-Feb-08 14:03:35

