

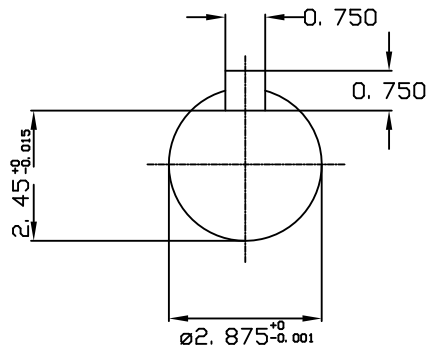
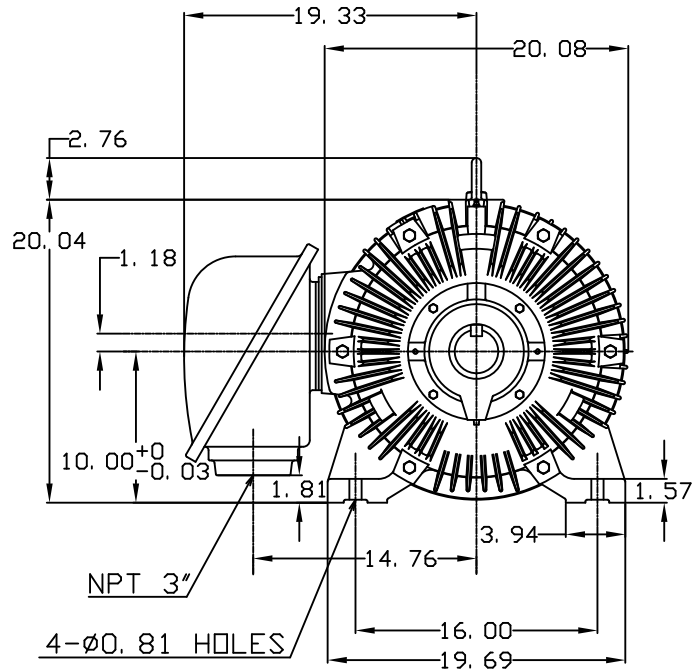
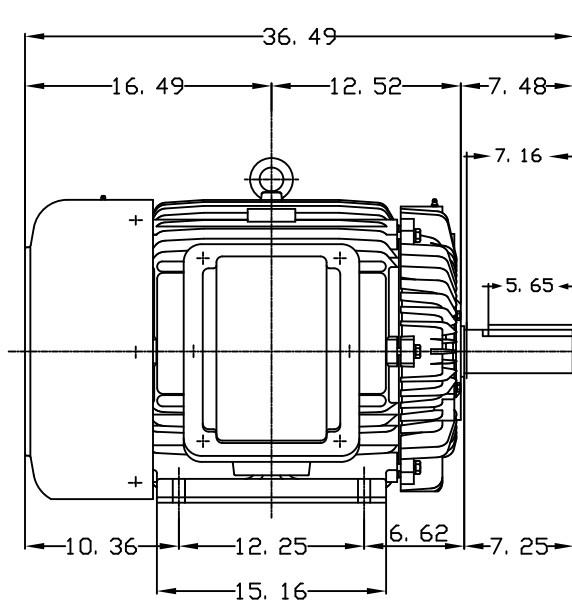
DATE
OCT. 30, 2015
CATALOG NO.
QT0606

OUTLINE DIMENSIONS
3-PHASE INDUCTION MOTOR

MOTOR TYPE:
AEEAFP
FRAME NO. 404T

| Pole | HP | KW | Hz | VOLT | Syn. Speed RPM |
|------|--------|--------------|---------------|----------|-------------------|
| 6 | 60 | 45 | 60 | 230/460 | 1200 |
| Ins | Rating | Dimension in | Approx Weight | Bearings | |
| F | CONT. | inches | 1166 lbs. | DE: 6317 | NDE: 6313 |

Totally Enclosed Fan Cooled Type, Squirrel-cage Rotor.



NOTE:

1. KLIXON 9700 THERMOSTAT, ONE PER PHASE, LEADS TERMINATE IN MAIN LEAD T-BOX. NORMALLY CLOSED.



| | | |
|------|---------|----------|
| DWN. | C. COOK | 10-30-15 |
| | | |
| | | |

TECO Westinghouse

DWG NO.
QT0606-404T